

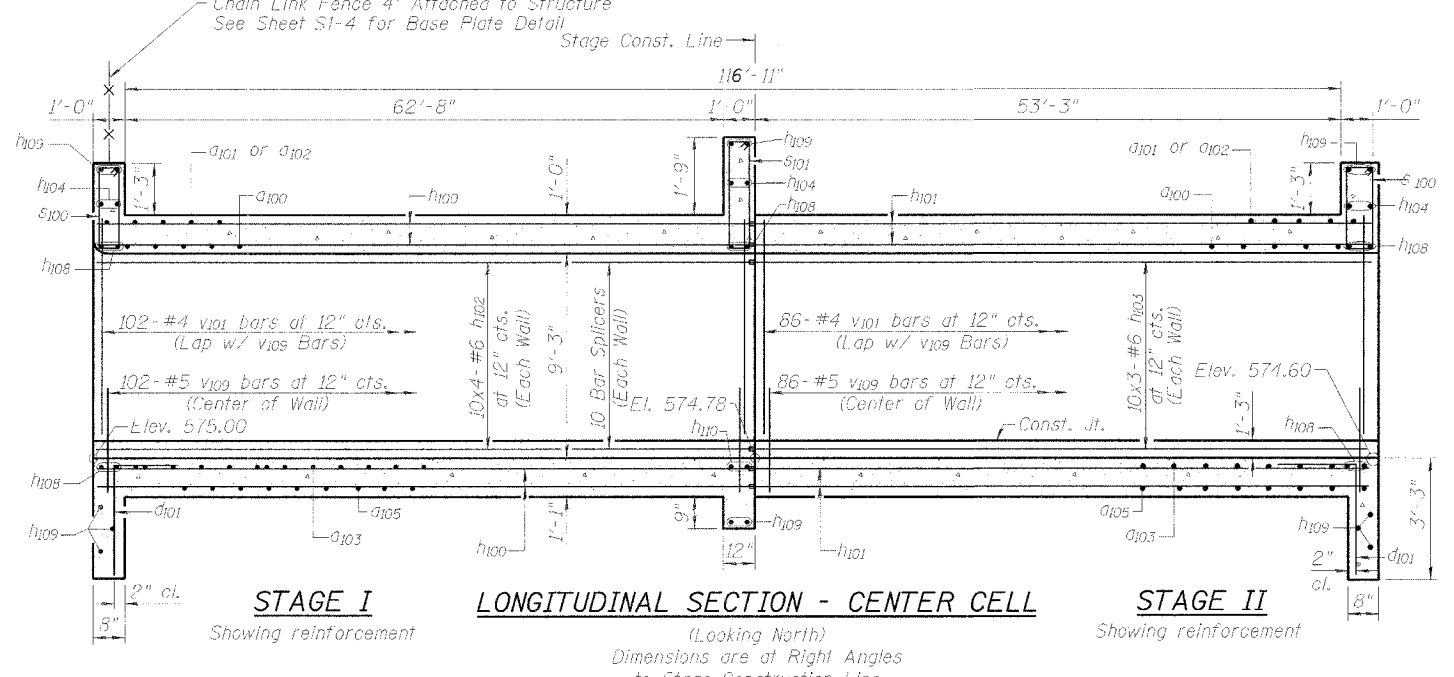
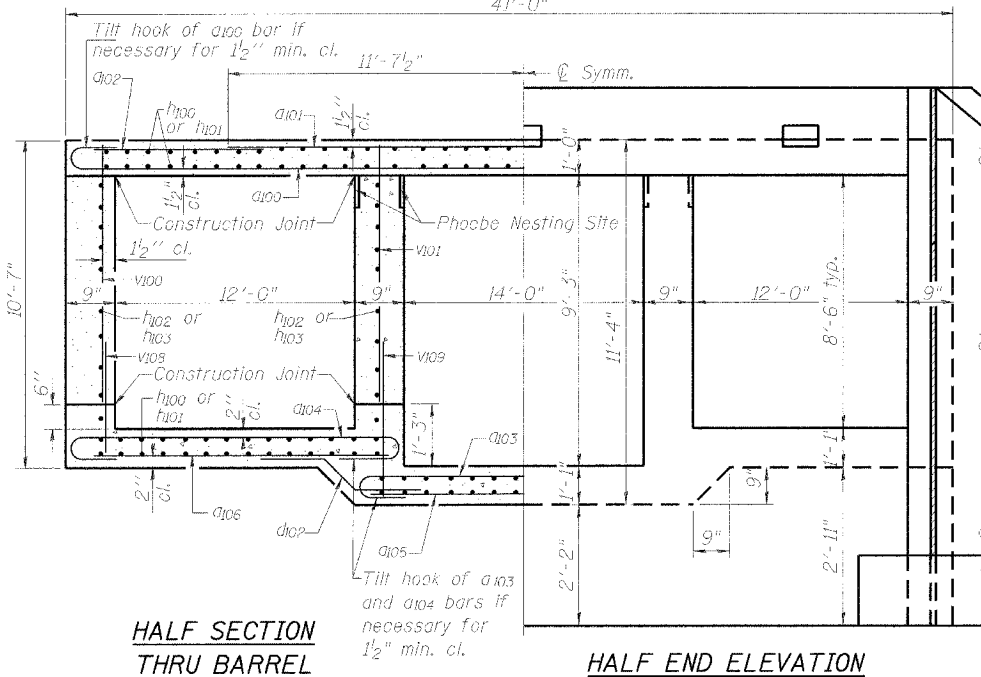
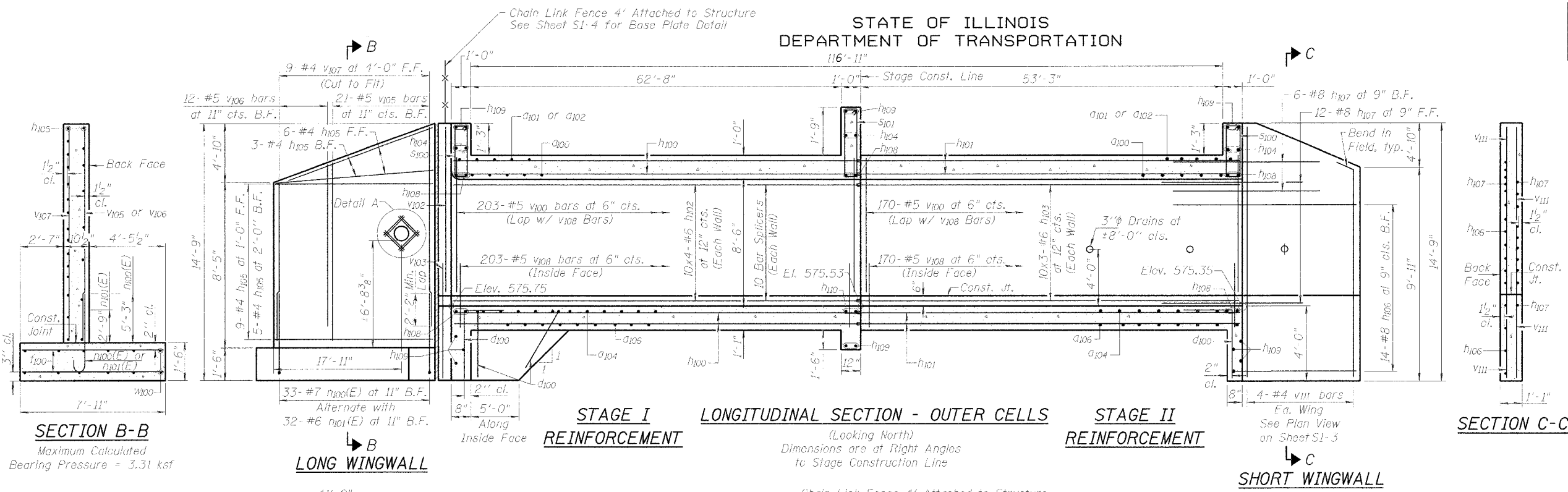
STATE OF ILLINOIS
DEPARTMENT OF TRANSPORTATION

PROJECT NO.	DATE	COUNTY	TOTAL SHEETS	SHEET NO.
F.A.P. 338	114R-1	WILL	355	263
FED. ROAD DIST. NO. 1			FED. AID PROJECT	

Contract # 62416

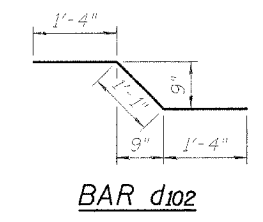
BILL OF MATERIAL

Bar	No.	Size	Length	Shape
a100	320	# 6	42'-0"	[U]
a101	324	# 8	23'-3"	[U]
a102	280	# 4	10'-1"	[U]
a103	368	# 5	17'-8"	[U]
a104	738	# 8	15'-0"	[U]
a105	78	# 4	15'-2"	[U]
a106	160	# 4	13'-2"	[U]
d100	74	# 4	5'-6"	[L]
d101	30	# 4	4'-9"	[L]
d102	156	# 4	3'-9"	[L]
h100	688	# 5	26'-5"	[U]
h101	516	# 5	29'-3"	[U]
h102	160	# 6	26'-8"	[U]
h103	120	# 6	29'-6"	[U]
h104	12	# 5	33'-0"	[U]
h105	46	# 5	29'-3"	[U]
h106	28	# 8	14'-3"	[U]
h107	36	# 8	8'-0"	[U]
h108	20	# 6	33'-3"	[U]
h109	28	# 7	33'-8"	[U]
h110	4	# 8	54'-2"	[U]
h111	16	# 5	4'-1"	[U]
n100(E)	66	# 7	7'-3"	[U]
n101(E)	64	# 6	4'-7"	[U]
s100	64	# 4	6'-3"	[U]
s101	65	# 4	7'-3"	[U]
s102	64	# 4	6'-1"	[U]
v100	128	# 5	7'-8"	[U]
v101	746	# 5	8'-8"	[U]
v102	376	# 4	8'-8"	[U]
v103	4	# 5	9'-11"	[U]
v104	4	# 5	7'-3"	[U]
v105	42	# 5	10'-0"	[U]
v106	24	# 5	8'-2"	[U]
v107	18	# 4	13'-0"	[U]
v108	746	# 5	3'-9"	[U]
v109	376	# 4	4'-6"	[U]
v111	10	# 4	14'-5"	[U]
w100	28	# 5	29'-3"	[U]
Reinforcement Bars		Pound	166,890	
Reinforcement Bars, Epoxy Coated		Pound	1420	
Concrete Box Culverts		Cu. Yd.	860.4	



MINIMUM BAR LAP

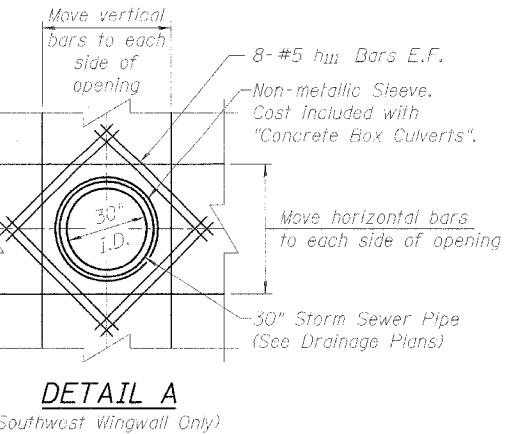
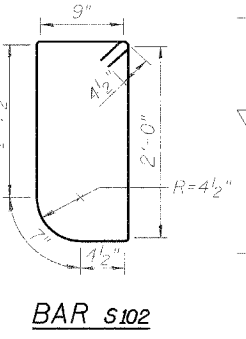
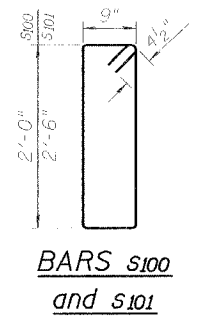
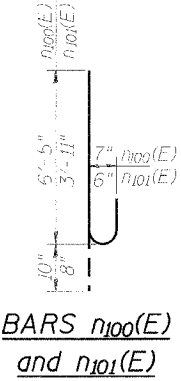
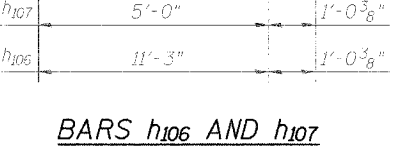
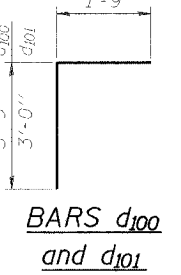
- (Barrel)
- #5 bar = 1'-8"
- #6 bar = 2'-0"
- #7 bar = 2'-9"
- #8 bar = 3'-8"



DESIGNED	SLC
CHECKED	MDS
DRAWN	MDS
CHECKED	SLC

BARS a100, a103 AND a104

Bar	A	J	X
a100	8"	6"	10'-8"
a103	1'-3"	11'-4"	15'-2"
a104	11"	8"	13'-2"



CULVERT SECTIONS AND DETAILS

IL ROUTE 59 OVER HAMMEL CREEK
F.A.P. ROUTE 338 SECTION 114R-1
WILL COUNTY
STATION 3041+91.63
STRUCTURE NO. 099-4660

