

STATE OF ILLINOIS
DEPARTMENT OF TRANSPORTATION

ROUTE NO.	SECTION	COUNTY	TOTAL SHEETS	SHEET NO.
338	114R-1	WILL	355	7
FED. ROAD DIST. NO. 7		ILLINOIS	FED. AID PROJECT	

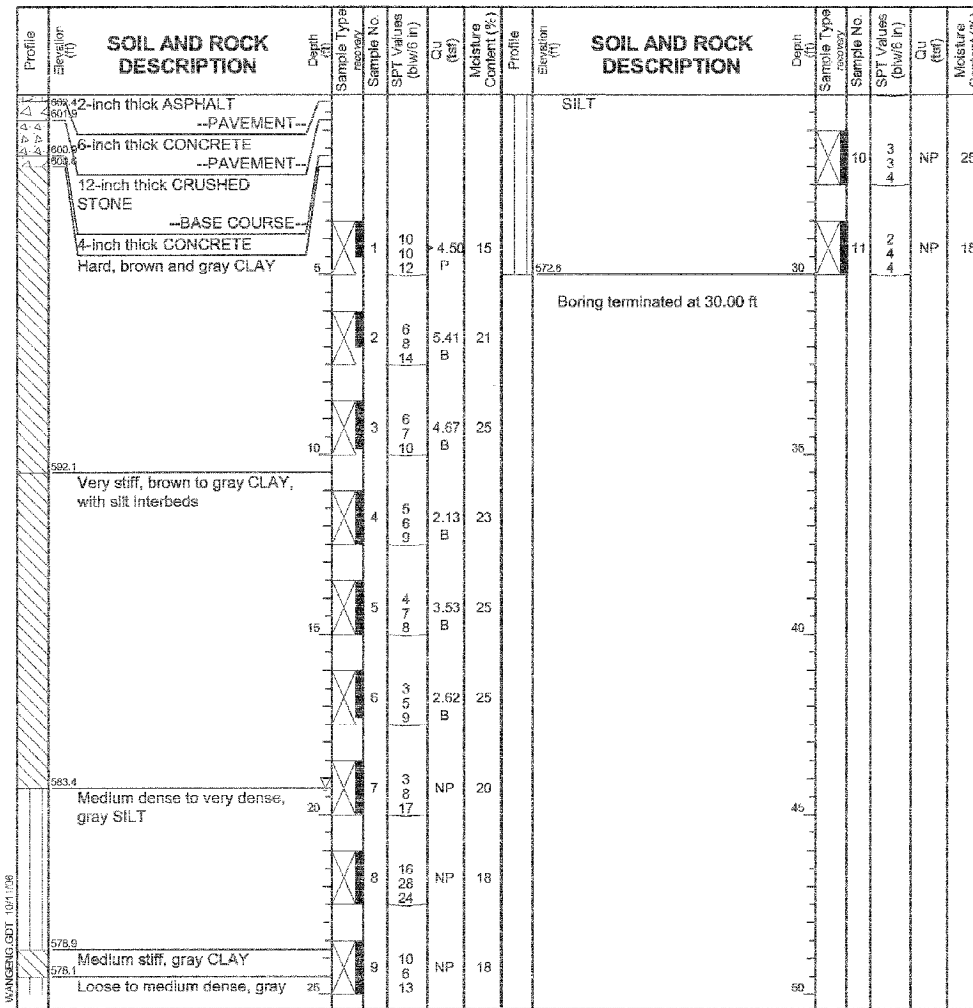
Contract # 62416

W Wang Engineering, Inc.
Consulting Geotechnical and Environmental Engineers
wangeng3@wangeng.com
1145 Main Street
Lombard, IL 60148
Telephone: 630 953-9928
Fax: 630 953-9938

BORING LOG RW1-1
WEI Job No.: 790-05-01
Client: **TranSystems Corporation**
Project: **RT 59 (FAP 338) Reconstruction, IDOT D-91-123-02**
Location: **T35N R9E, Will County, Illinois**

Datum: NGVD
Elevation: 602.61 ft
North: 1770711.43 ft
East: 1021050.07 ft
Station: 3053+70.84
Offset: 3.15 RT

Page 1 of 1



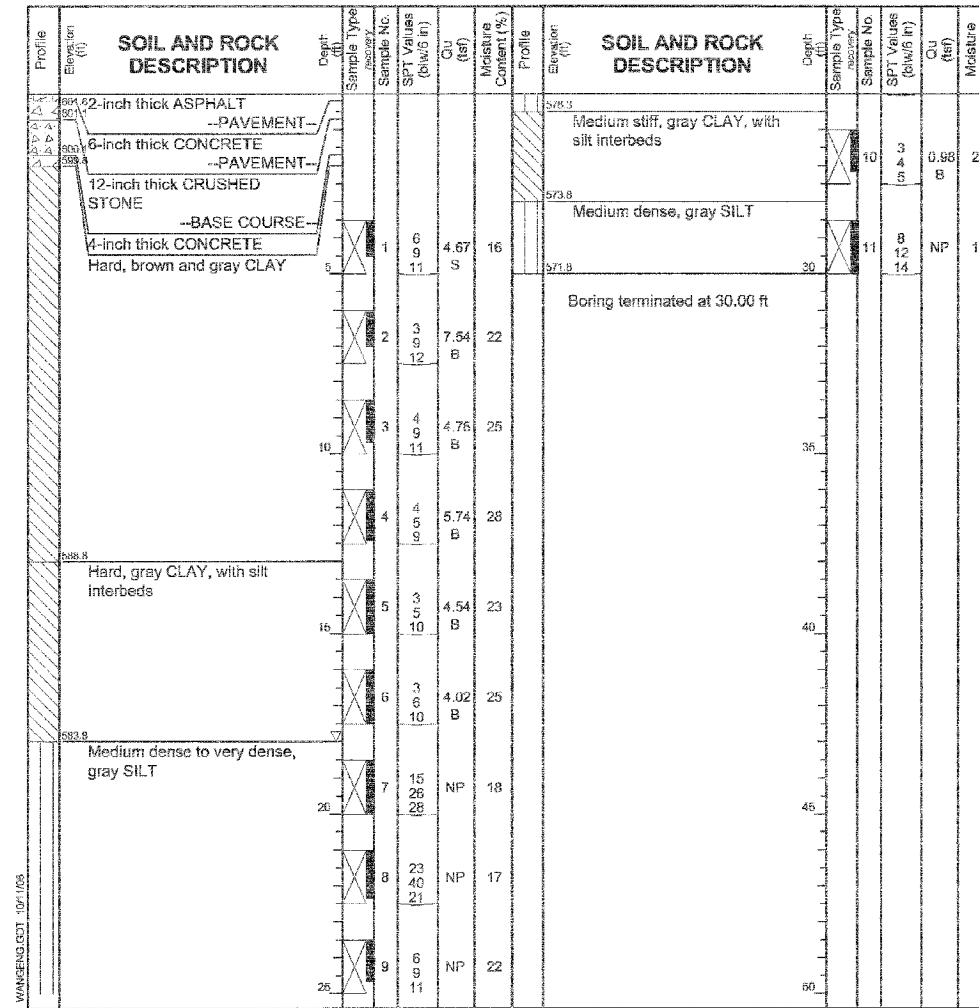
GENERAL NOTES		WATER LEVEL DATA	
Begin Drilling	04-16-2003	Complete Drilling	04-16-2003
Drilling Contractor	Patrick Drilling	Drill Rig	CME-55 TMR
Driller	K&J	Logger	A. Taylor
Checked by	E. Datz	Time After Drilling	NA
Drilling Method	3.25 ID HSA; Boring backfilled upon completion		
While Drilling	19.25 ft	At Completion of Drilling	DRY
Depth to Water	NA	The stratification lines represent the approximate boundary between soil types; the actual transition may be gradual.	

W Wang Engineering, Inc.
Consulting Geotechnical and Environmental Engineers
wangeng3@wangeng.com
1145 Main Street
Lombard, IL 60148
Telephone: 630 953-9928
Fax: 630 953-9938

BORING LOG RW1-2
WEI Job No.: 790-05-01
Client: **TranSystems Corporation**
Project: **RT 59 (FAP 338) Reconstruction, IDOT D-91-123-02**
Location: **T35N R9E, Will County, Illinois**

Datum: NGVD
Elevation: 601.83 ft
North: 1770637.65 ft
East: 1021052.60 ft
Station: 3052+97.02
Offset: 3.39 RT

Page 1 of 1



GENERAL NOTES		WATER LEVEL DATA	
Begin Drilling	04-16-2003	Complete Drilling	04-16-2003
Drilling Contractor	Patrick Drilling	Drill Rig	CME-55 TMR
Driller	K&J	Logger	A. Taylor
Checked by	E. Datz	Time After Drilling	NA
Drilling Method	3.25 ID HSA; Boring backfilled upon completion		
While Drilling	18.00 ft	At Completion of Drilling	DRY
Depth to Water	NA	The stratification lines represent the approximate boundary between soil types; the actual transition may be gradual.	

DESIGNED	SLC
CHECKED	MDS
DRAWN	MDS
CHECKED	SLC

BORING LOGS I
RETAINING WALL ALONG IL ROUTE 59
F.A.P. ROUTE 338 SECTION 114R-1
WILL COUNTY
STATION 3051+60.30 TO STATION 3053+56.25
STRUCTURE NO. 099-W017

TranSystems
1051 PERIMETER DRIVE, SUITE 1025
SCHAMBERG, IL 60173-5008
TEL: (847) 605-3600
FAX: (847) 605-9630