

F.A.I. R.T.E.	SECTION	COUNTY	TOTAL SHEETS	SHEET NO.
90/94	*	COOK	30	1
62989				

**DESIGN NUMBER**  
D-91-417-01



SIGNATURE *D. Moore*  
DATE Apr. 25, 2008  
EXPIRES Nov. 30, 2009



SIGNATURE *John D. Colwell*  
DATE Apr. 25, 2008  
EXPIRES Nov. 30, 2009



SIGNATURE *Brian L. Umbright*  
DATE APRIL 25, 2008  
EXPIRES Nov. 30, 2008

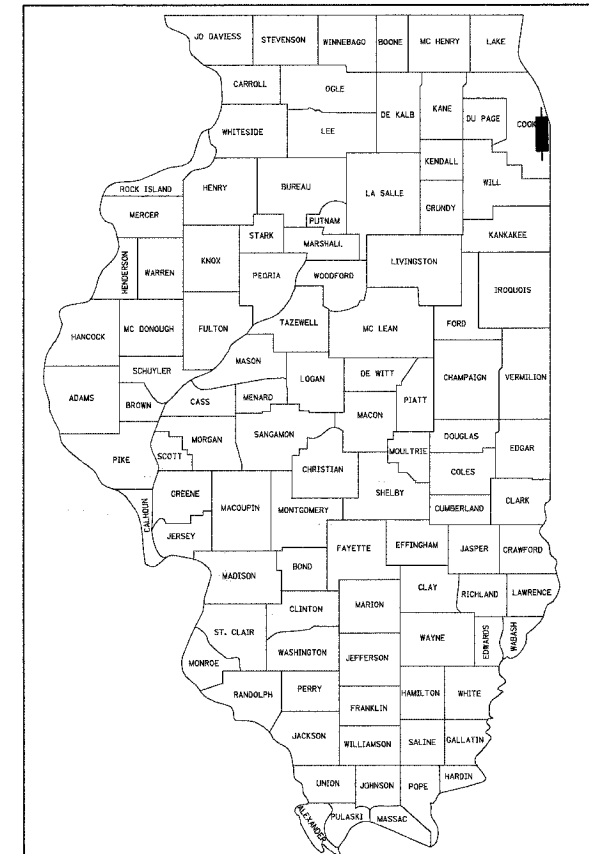
STATE OF ILLINOIS  
DEPARTMENT OF TRANSPORTATION  
DIVISION OF HIGHWAYS  
**PLANS FOR PROPOSED  
FEDERAL AID HIGHWAY**

F.A.I. ROUTE 90/94 (DAN RYAN EXPRESSWAY)  
SECTION 2122-921 PT 2-1-4

NORTHBOUND KNEE WALLS  
(45TH ST TO 43RD ST)

COOK COUNTY

C-91-247-05



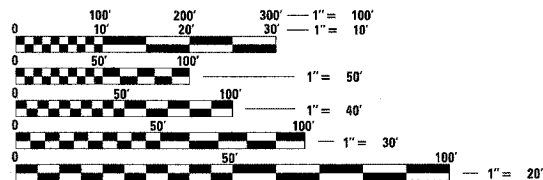
LOCATION OF SECTION INDICATED THUS: - [black rectangle] -

PROJECT LOCATED IN CITY OF CHICAGO

**DESIGN DESIGNATION**

LA SALLE ST: 8275 (20) URBAN COLLECTOR

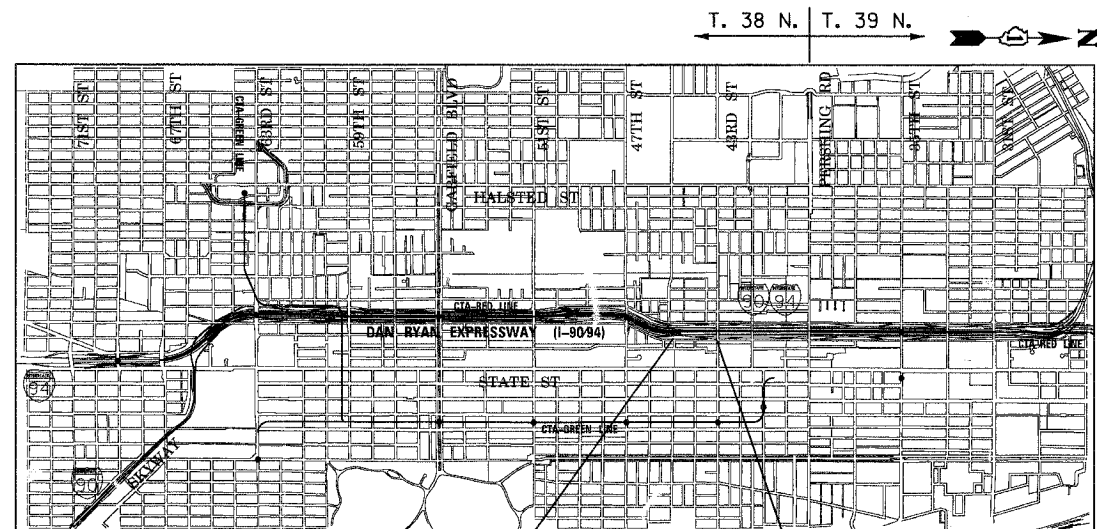
FRONTAGE ROAD:	ADT (2020)	DESIGN SPEED	POSTED SPEED
LA SALLE ST	15,000	30	25



FULL SIZE PLANS HAVE BEEN PREPARED USING STANDARD ENGINEERING SCALES. REDUCED SIZED PLANS WILL NOT CONFORM TO STANDARD SCALES. IN MAKING MEASUREMENTS ON REDUCED PLANS, THE ABOVE SCALES MAY BE USED.

BEFORE EXCAVATING CALL:  
(J.U.L.I.E.) JOINT UTILITY LOCATION INFORMATION FOR EXCAVATION  
1-800-892-0123 OR 811

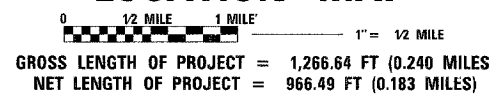
CONTRACT NO. 62989



PROJECT BEGINS  
NB LA SALLE ST  
STA 225 + 30

PROJECT ENDS  
NB LA SALLE ST  
STA 237 + 96.64

**LOCATION MAP**



STATE OF ILLINOIS  
DEPARTMENT OF TRANSPORTATION  
DIVISION OF HIGHWAYS

SUBMITTED APRIL 29, 2008

*Diana M. O'Keefe* or  
DEPUTY DIRECTOR OF HIGHWAYS, REGION ENGINEER

June 27, 2008  
*Chris E. Harman*  
ENGINEER OF DESIGN AND ENVIRONMENT

June 27, 2008  
*Christine M. Reed*  
DIRECTOR OF HIGHWAYS, CHIEF ENGINEER

**PRINTED BY THE AUTHORITY  
OF THE STATE OF ILLINOIS**

BOWMAN, BARRETT & ASSOCIATES INC.  
CONSULTING ENGINEERS  
Chicago, Illinois  
312.228.0100  
www.bbandainc.com

DISTRICT ONE DESIGN/CONSULTANT SERVICES PROJECT MANAGER  
RAJENDRA SHAH (847) 705-4555

m:\660\cadd\civil\31B\SHEET\51660\_31B\COVER.dgn