

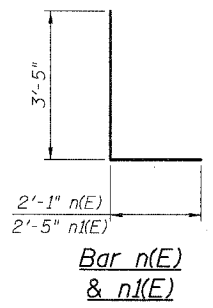
F.A.I.	SECTION	COUNTY	TOTAL SHEETS	SHEET NO.
94/90	*	COOK	27	15
STA.	TO STA.			
FED. ROAD DIST. NO.	ILLINOIS	FED. AID PROJECT		
62990				

DETAIL B REINFORCEMENT SCHEDULE AND BILL OF MATERIAL

Bar	No.	Size	Length	Shape
h(E)	8	#4	19'-7"	—
n(E)	21	#6	5'-6"	L
n(E)	21	#5	5'-10"	L
t(E)	21	#6	4'-8"	—
w(E)	4	#4	19'-7"	—
Item	Unit	Qty.		
① Concrete Structures	Cu. Yd.	3.4		
② Concrete Superstructure	Cu. Yd.	2.7		
Reinforcement Bars, Epoxy Coated	Pound	610		
Rustication Finish	Sq. Ft.	37		
Protective Coat	Sq. Yd.	14		

DETAIL C REINFORCEMENT SCHEDULE AND BILL OF MATERIAL

Bar	No.	Size	Length	Shape
h(E)	8	#4	17'-9"	—
n(E)	19	#6	5'-6"	L
n(E)	19	#5	5'-10"	L
t(E)	19	#6	5'-1"	—
w(E)	4	#4	17'-9"	—
Item	Unit	Qty.		
① Concrete Structures	Cu. Yd.	3.2		
② Concrete Superstructure	Cu. Yd.	2.4		
Reinforcement Bars, Epoxy Coated	Pound	560		
Rustication Finish	Sq. Ft.	34		
Protective Coat	Sq. Yd.	13		

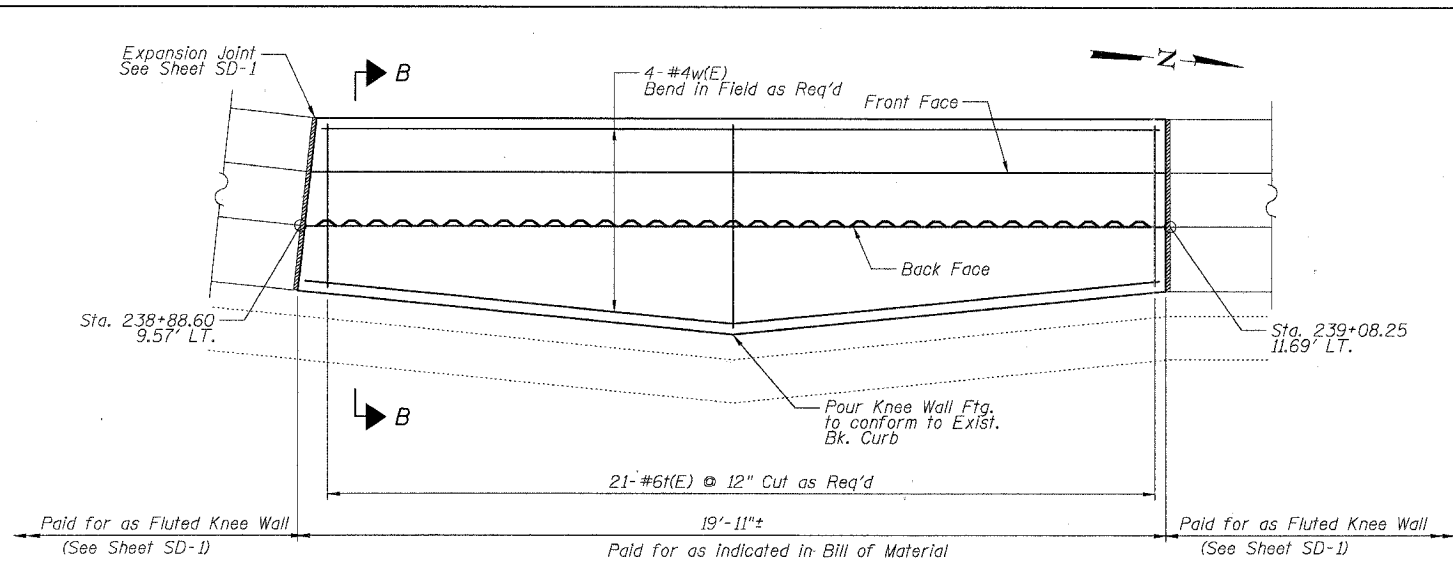


SHEET SD-3

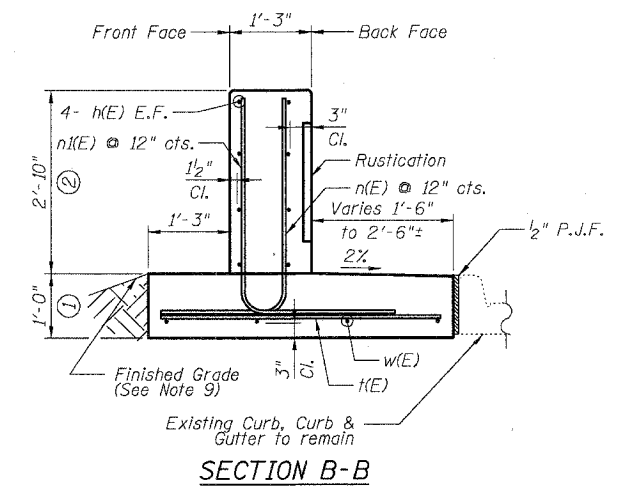
ILLINOIS DEPARTMENT OF TRANSPORTATION
F.A.I. 94/90 (DAN RYAN EXPRESSWAY)
NORTHBOUND KNEE WALLS (43RD ST TO ROOT ST)

DETAILS B & C

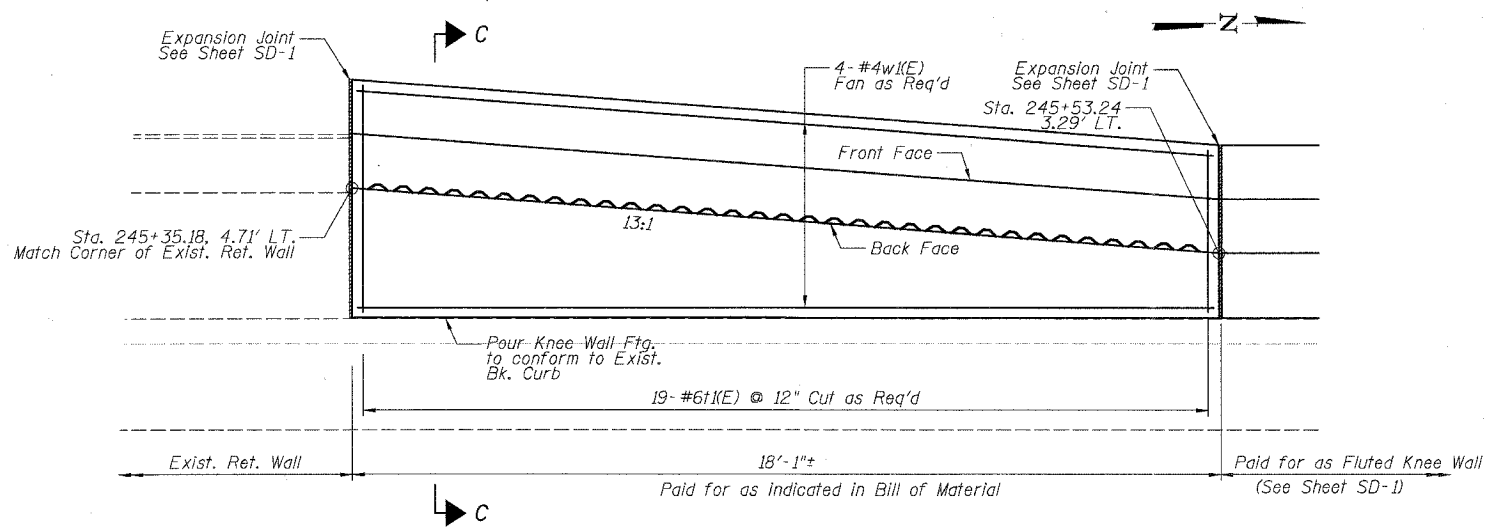
SCALE: NTS
DATE: 04/25/08
DRAWN BY: TL
CHECKED BY: BLU



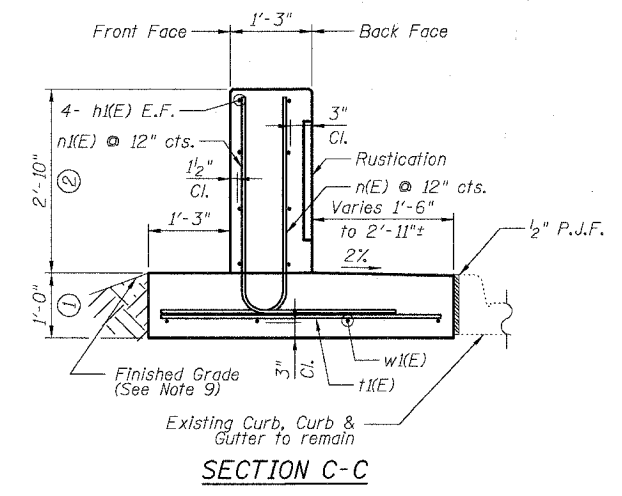
S. LA SALLE ST. DETAIL B



SECTION B-B



S. LA SALLE ST. DETAIL C



SECTION C-C

NOTES:

- All stations and offsets measured from S. La Salle St. \square .
- Back Face is face adjacent to Frontage Rd. and Front Face is face adjacent to Expressway.
- Concrete: $f'c = 3500$ psi
- Provide California Finish on top of foundation between stem and Frontage Road. See Roadway Details.
- At locations where Fluted Knee Wall abuts a rigid Structure, a $\frac{1}{2}$ " thick Preformed Expansion Joint Filler conforming to the shape of the Structure shall be installed between the Fluted Knee Wall and the Structure.
- Apply Protective Coat to top and back face of stem and top of Frontage Road side of foundation.
- For Fluted Knee Wall standard details, see Sheet SD-1
- B.F. = Back Face (Frontage Road Side)
F.F. = Front Face (Expressway Side)
E.F. = Each Face
- Shape finished grade as required to match existing conditions.
- P.J.F. included in cost of concrete structures.

BOWMAN, BARRETT & ASSOCIATES INC.
CONSULTING ENGINEERS
Chicago, Illinois
312.228.0100
www.bbainc.com

REVISIONS	NAME	DATE

4/24/2008 5:53:30 PM