

F.A.I.	SECTION	COUNTY	TOTAL SHEETS	SHEET NO.
94/90	*	COOK	25	7
STA.		TO STA.		
FED. ROAD DIST. NO.	ILLINOIS	FED. AID PROJECT		

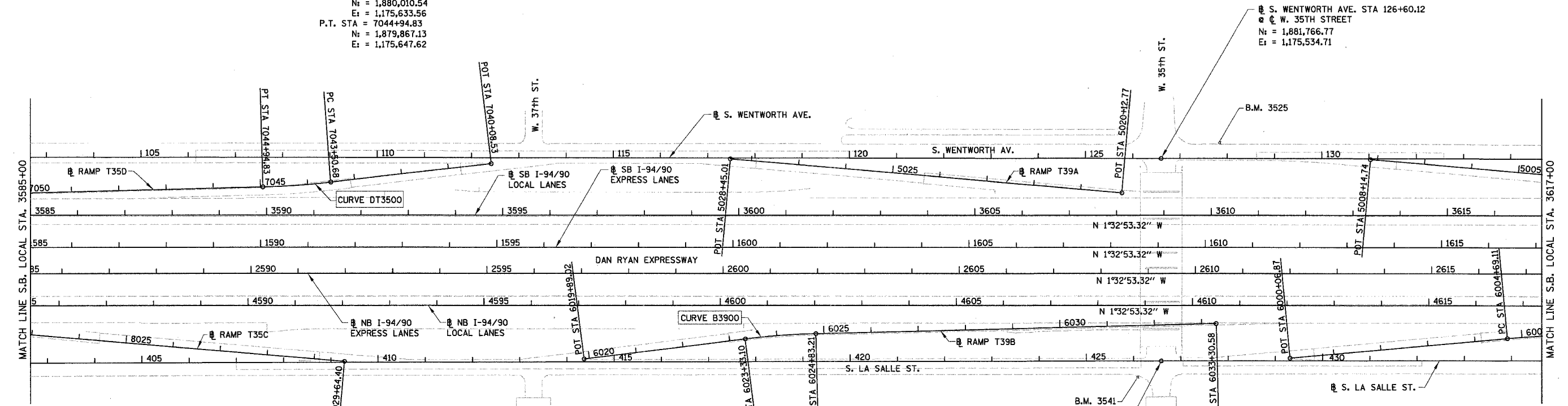
62996

PROP. CURVE DT3500  
 P.I. STA = 7044+22.81  
 N: = 1,879,939.16  
 E = 1,175,643.87  
 $\Delta$  = 5° 14' 38" (RT)  
 D = 3° 38' 16"  
 R = 1,575.00'  
 T = 72.13'  
 L = 144.15'  
 E = 1.65'  
 e = 3.6%  
 S.A. = STA 7043+14.68  
 TO 7043+59.68  
 S.R. = STA 7044+85.83  
 TO 7045+30.83  
 P.C. STA = 7043+50.68  
 N: = 1,880,010.54  
 E: = 1,175,633.56  
 P.T. STA = 7044+94.83  
 N: = 1,879,867.13  
 E: = 1,175,647.62

PROP. CURVE B3900  
 P.I. STA = 6024+08.22  
 N: = 1,880,970.99  
 E = 1,175,932.00  
 $\Delta$  = 5° 47' 44" (RT)  
 D = 3° 51' 39"  
 R = 1,484.00'  
 T = 75.12'  
 L = 150.11'  
 E = 1.90'  
 e = 3.7%  
 S.A. = STA 6022+97.10  
 TO 6023+42.10  
 S.R. = STA 6024+74.21  
 TO 6025+19.21  
 P.C. STA = 6023+33.10  
 N: = 1,880,896.76  
 E: = 1,175,943.46  
 P.T. STA = 6024+83.21  
 N: = 1,881,046.01  
 E: = 1,175,928.09

S. WENTWORTH AVE. STA 126+60.12  
 W. 35TH STREET  
 N: = 1,881,766.77  
 E: = 1,175,534.71

S. LASALLE ST. STA 426+58.57  
 W. 35TH STREET  
 N: = 1,881,778.46  
 E: = 1,175,967.25



- NOTES:
- AVERAGE GRID TO GROUND CONVERSION  
 FACTOR = 1.000010988654360
  - FOR BENCH MARK INFORMATION, SEE SHEET ALT-16 OF ALIGNMENT PLAN SHEETS.
  - FOR RAMP P.O.T. INFORMATION, SEE SHEET ALT-16 OF ALIGNMENT PLAN SHEETS.

REVISIONS	
NAME	DATE

ILLINOIS DEPARTMENT OF TRANSPORTATION  
 F.A.I. 94/90 (DAN RYAN EXPRESSWAY)  
 SOUTHBOUND KNEE WALLS (43RD ST TO ROOT ST)

ALIGNMENT PLAN

SCALE: 1"=100'  
 DATE: 04/25/08  
 DRAWN BY: JOC  
 CHECKED BY: RS

BOWMAN, BARRETT & ASSOCIATES INC.  
 CONSULTING ENGINEERS  
 Chicago, Illinois  
 312.228.0100  
 www.bbainc.com



ALT-03  
 6/4/08 PM  
 7/24/2008