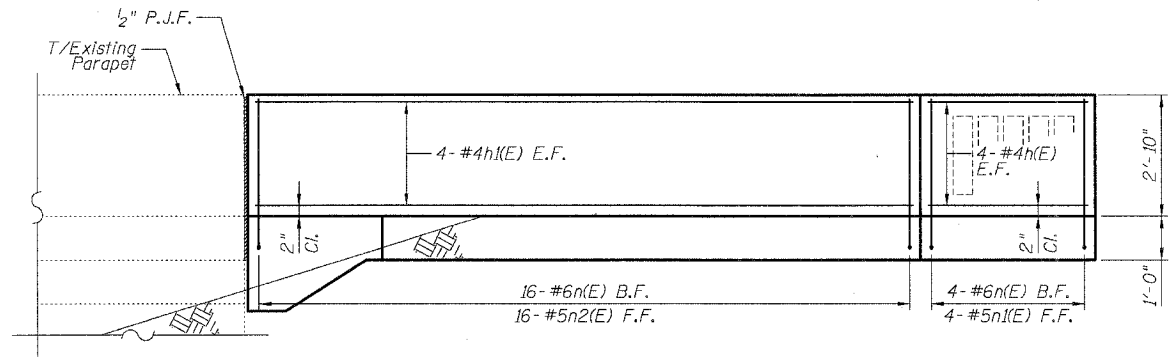


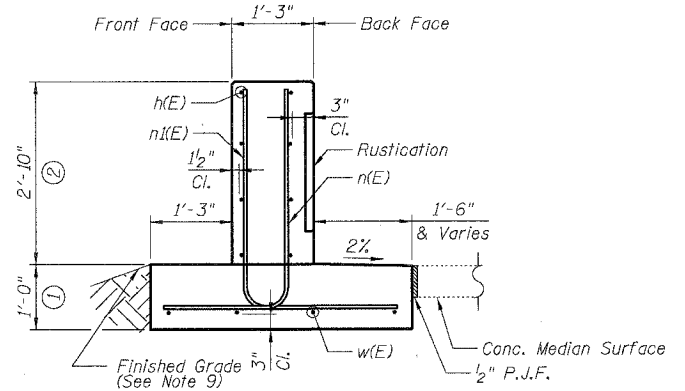
F.A.I.	SECTION	COUNTY	TOTAL SHEETS	SHEET NO.
94/90		COOK	25	14
STA.	TO STA.			
FED. ROAD DIST. NO.	ILLINOIS	FED. AID PROJECT		
62996				

DETAIL A REINFORCEMENT SCHEDULE AND BILL OF MATERIAL

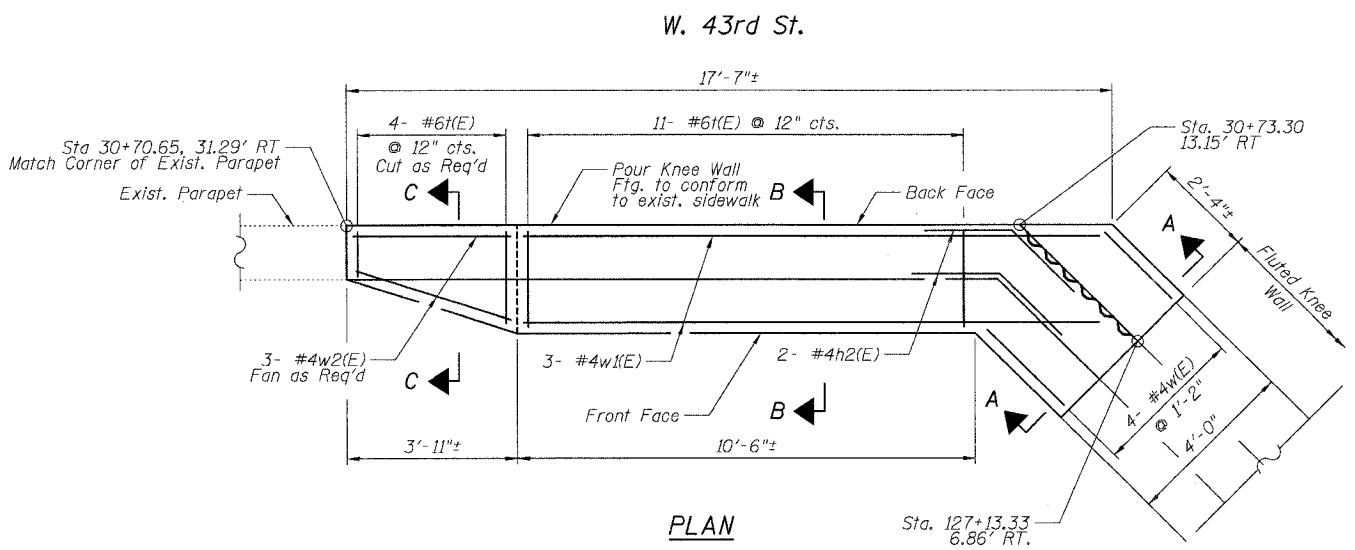
Bar	No.	Size	Length	Shape
h(E)	8	#4	3'-6"	
h1(E)	8	#4	15'-1"	
h2(E)	2	#4	4'-0"	
n(E)	20	#6	5'-6"	L
n1(E)	4	#5	5'-10"	L
n2(E)	16	#5	4'-0"	
k(E)	15	#6	2'-2"	
w(E)	4	#4	2'-0"	
w1(E)	3	#4	13'-2"	
w2(E)	3	#4	3'-6"	
Item		Unit	Qty.	
Concrete Structures		Cu. Yd.	2.1	
Concrete Superstructure		Cu. Yd.	2.5	
Reinforcement Bars, Epoxy Coated		Pound	450	
Rustication Finish		Sq. Ft.	8	
Protective Coat		Sq. Yd.	9	



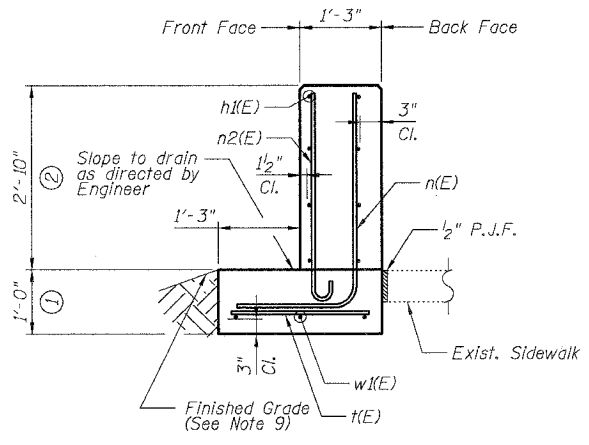
UNFOLDED FRONT FACE ELEVATION



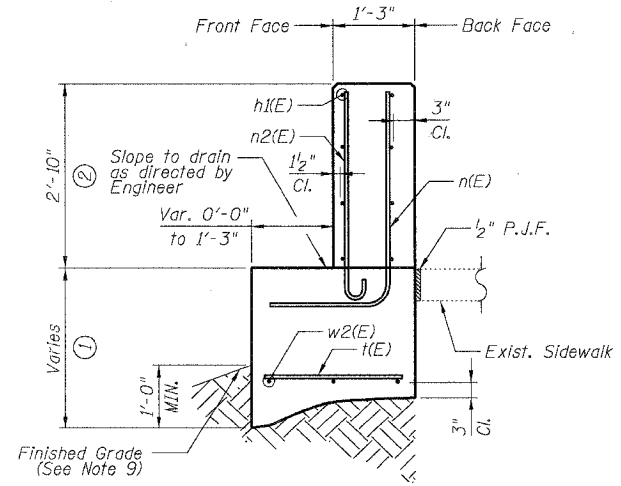
SECTION A-A



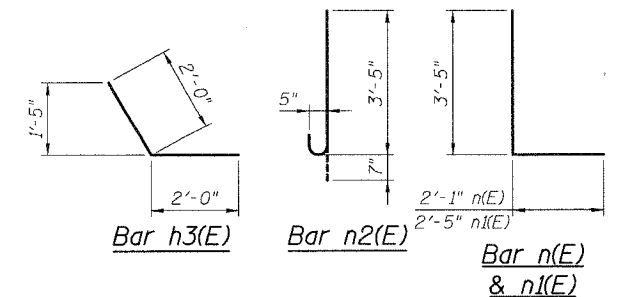
PLAN



SECTION B-B



SECTION C-C



NOTES:

- All stations and offsets measured from S. Wentworth Ave. \perp .
- Back Face is face adjacent to Frontage Rd. and Front Face is face adjacent to Expressway.
- Concrete: $f'c = 3500$ psi
- Provide California Finish on top of foundation between stem and Frontage Road. See Roadway Details.
- At locations where Fluted Knee Wall abuts a rigid structure, a 2" thick Preformed Expansion Joint Filler conforming to the shape of the structure shall be installed between the Fluted Knee Wall and the Structure.
- Apply Protective Coat to top and back face of stem and top of Frontage Road side of foundation.
- For Fluted Knee Wall standard details, see Sheet SD-1
- B.F. = Back Face (Frontage Road Side)
F.F. = Front Face (Expressway Side)
E.F. = Each Face
- Shape finished grade as required to match existing conditions.
- P.J.F. included in cost of concrete structures.

BOWMAN, BARRETT & ASSOCIATES INC.
CONSULTING ENGINEERS
Chicago, Illinois
312.228.0100
www.bbainc.com

REVISIONS	DATE
NAME	

ILLINOIS DEPARTMENT OF TRANSPORTATION
F.A.I. 94/90 (DAN RYAN EXPRESSWAY)
SOUTHBOUND KNEE WALLS (43RD ST TO ROOT ST)

DETAIL A

SCALE: NTS
DATE: 04/25/08
DRAWN BY: TL
CHECKED BY: BLU

4/24/2008 4:50:28 PM