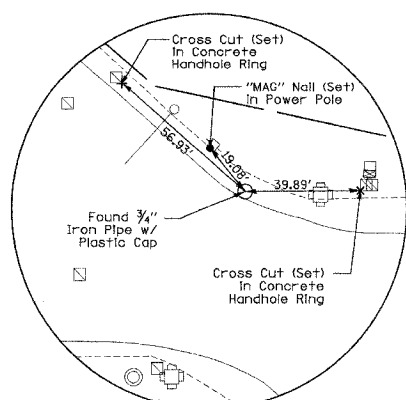
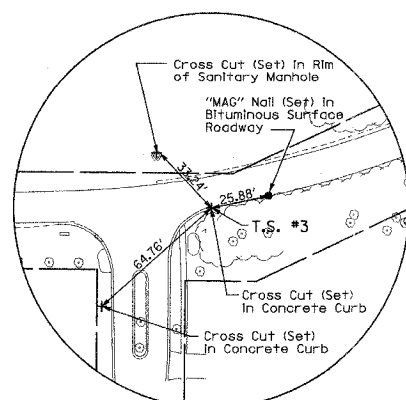


DATE: _____
 BY: _____
 PLAN NO. _____
 CHECKED BY: _____
 DATE: _____
 NO. _____

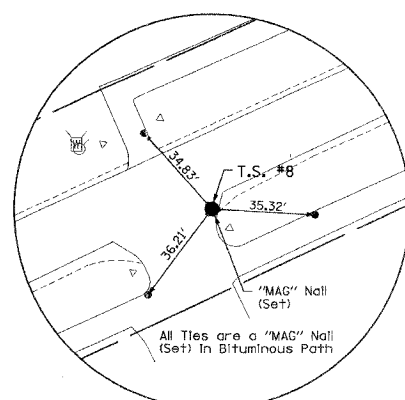
DATE: _____
 BY: _____
 PROFILE NO. _____
 CHECKED BY: _____
 DATE: _____
 NO. _____



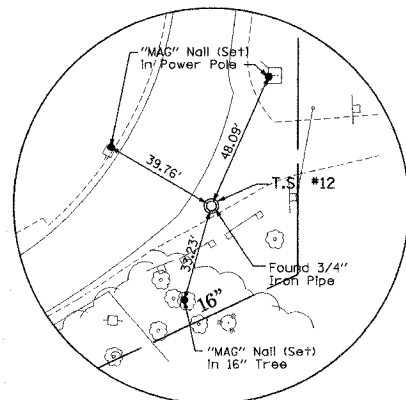
TRAVERSE STATION #25
 STA. 6+62.54
 N 3453.3642
 E 10340.5302



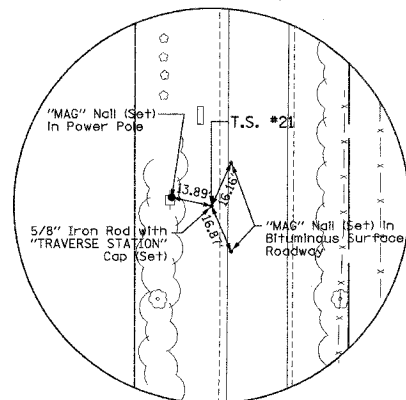
TRAVERSE STATION #3
 STA. 19+07.96
 N 3425.5413
 E 11584.6564



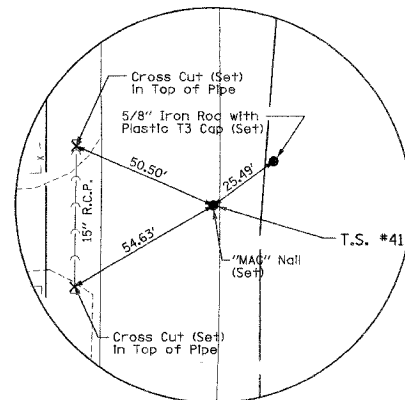
TRAVERSE STATION #8
 STA. 40+17.05
 N 4287.9065
 E 13505.6766



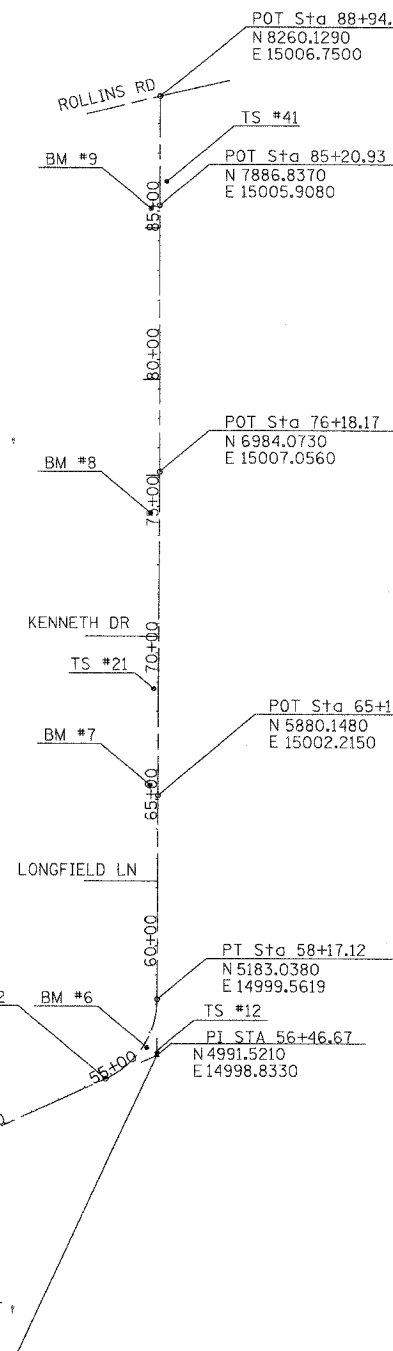
TRAVERSE STATION #12
 STA. 56+53.23
 N 4999.9766
 E 14999.9296



TRAVERSE STATION #21
 STA. 68+77.48
 N 6243.4593
 E 14988.4111



TRAVERSE STATION #41
 STA. 86+02.88
 N 7968.7243
 E 15030.0937



BENCHMARK	ELEVATION	DESCRIPTION
BM #1	804.92	FOUND RAILROAD SPIKE IN POWER POLE IN THE NORTHEAST QUADRANT OF THE INTERSECTION OF ILLINOIS ROUTE 83 AND SHOREWOOD ROAD
BM #2	788.42	RAILROAD SPIKE SET IN POWER POLE APPROXIMATELY 95 FEET WEST OF THE WEST R.O.W. LINE OF NORMANDY WOODS COURT AND APPROXIMATELY 12 FEET NORTH OF THE SOUTH R.O.W. LINE OF SHOREWOOD ROAD
BM #3	783.22	RAILROAD SPIKE SET IN WOOD POLE OF WARNING SIREN
BM #4	781.45	CROSS CUT SET IN SOUTH FLANGE BOLT OF FIRE HYDRANT
BM #5	785.03	RAILROAD SPIKE SET IN POWER POLE APPROXIMATELY 58 FEET WEST OF THE WEST R.O.W. LINE OF CARILLON DRIVE AND APPROXIMATELY 12 FEET SOUTH OF THE NORTH R.O.W. LINE OF DRURY LANE
BM #6	783.30	RAILROAD SPIKE SET IN POWER POLE
BM #7	779.83	RAILROAD SPIKE SET IN POWER POLE
BM #8	775.70	RAILROAD SPIKE SET IN POWER POLE APPROXIMATELY 785 FEET NORTH OF THE NORTH R.O.W. LINE OF COMMONWEALTH EDISON COMPANY AND APPROXIMATELY 6 FEET EAST OF THE WEST R.O.W. LINE OF DRURY LANE
BM #9	774.10	RAILROAD SPIKE SET IN POWER POLE APPROXIMATELY 327 FEET SOUTH OF THE SOUTH R.O.W. LINE OF ROLLINS ROAD AND APPROXIMATELY 5 FEET EAST OF THE WEST R.O.W. LINE OF DRURY LANE

REVISIONS	
NAME	DATE

VILLAGE OF GRAYSLAKE
 SHOREWOOD ROAD
 IL ROUTE 83 TO ROLLINS ROAD
 ALIGNMENT, TIES &
 BENCHMARKS

SCALE: 1" = 300'
 DATE: 11/06/07

DESIGNED BY: MTK
 DRAWN BY: MTK/BB/GP
 CHECKED BY: RPI