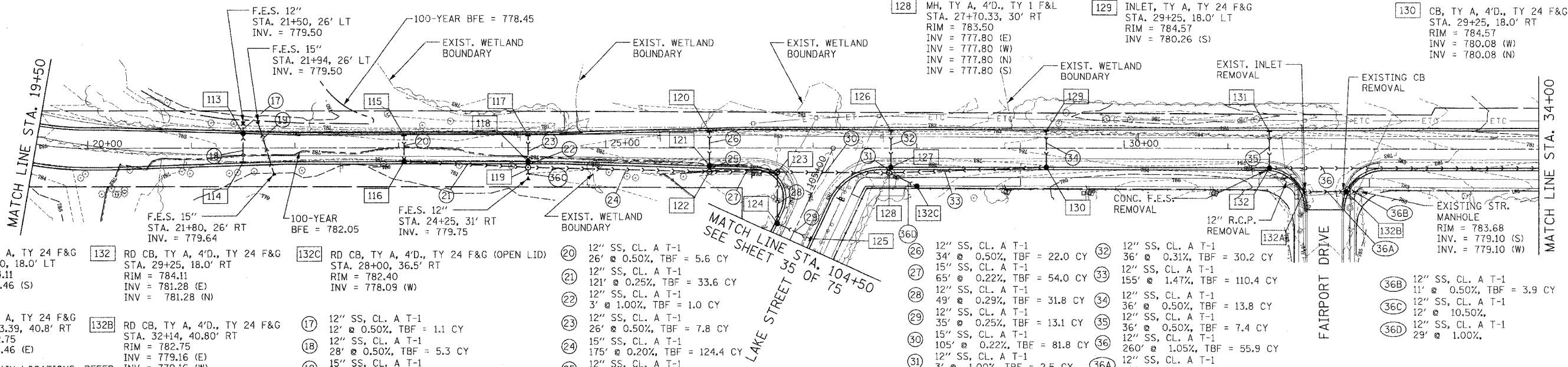


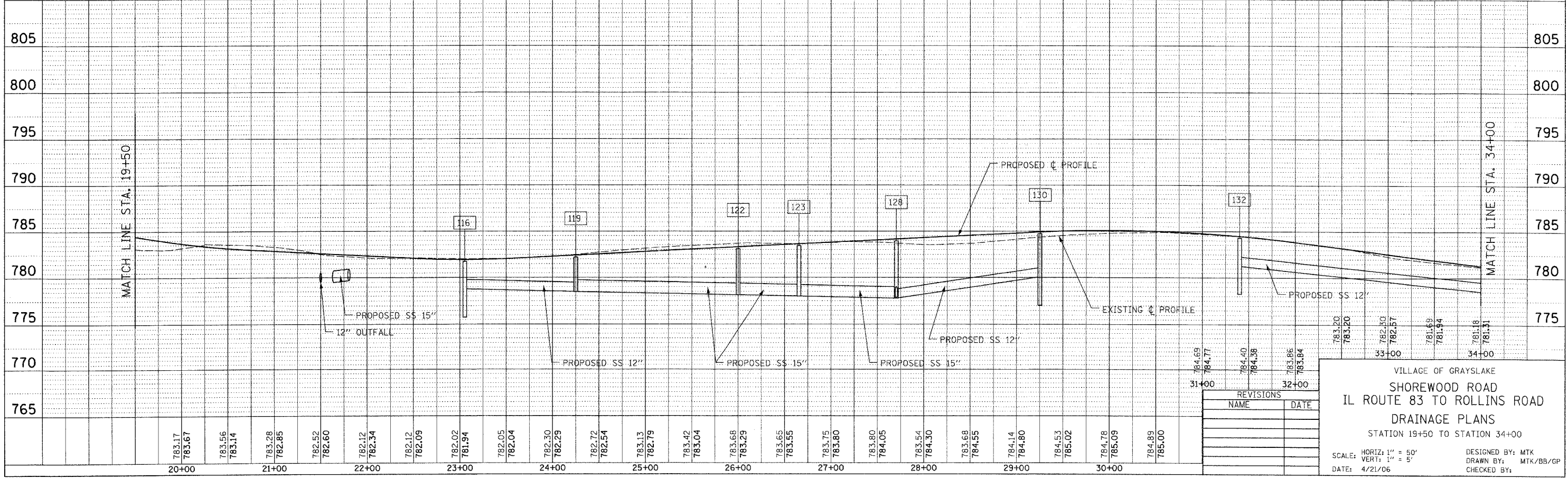
F.A. RTE.	SECTION	COUNTY	TOTAL SHEET NO.
03-00052-00-PV	LAKE	LAKE	78 31
STA. 19+50	TO STA. 34+00		
FED. ROAD DIST. NO.	ILLINOIS	FED. AID PROJECT	
CONTRACT NUMBER 63002			

- 113 RD CB, TY A, 4'D., TY 24 F&G STA. 21+50, 14.22' LT RIM = 782.31 INV = 779.56 (N) INV = 779.56 (S)
- 114 INLET, TY A, TY 24 F&G STA. 21+50, 14.22' RT RIM = 782.31 INV = 779.70 (N)
- 115 INLET, TY A, TY 24 F&G STA. 23+05.28, 13.0' LT RIM = 781.68 INV = 778.92 (S)
- 116 RD CB, TY A, 4'D., TY 24 F&G STA. 23+05.28, 13.0' RT RIM = 781.68 INV = 778.79 (N) INV = 778.79 (E)
- 117 INLET, TY A, TY 24 F&G STA. 24+25, 13.0' LT RIM = 782.15 INV = 778.65 (S)
- 118 CB, TY A, 4'D., TY 24 F&G STA. 24+25, 13.0' RT RIM = 782.15 INV = 778.52 (N) INV = 778.52 (S)
- 119 MH, TY A, 4'D., TY 1 F&L STA. 24+25, 18.5' RT RIM = 782.40 INV = 778.49 (E) INV = 778.49 (W) INV = 778.49 (N) INV = 778.49 (S)
- 120 INLET, TY A, TY 24 F&G STA. 26+00, 16.97' RT RIM = 782.96 INV = 778.34 (S)
- 121 CB, TY A, 4'D., TY 24 F&G STA. 26+00, 16.97' RT RIM = 782.96 INV = 778.17 (N) INV = 778.17 (S)
- 122 MH, TY A, 4'D., TY 1 F&L STA. 26+00, 22.5' RT RIM = 784.30 INV = 778.14 (E) INV = 778.14 (W) INV = 778.14 (N)
- 123 MH, TY A, 4'D., TY 1 F&L STA. 26+65.37, 22.85' RT RIM = 783.15 INV = 778.00 (E) INV = 778.00 (W)
- 124 CB, TY A, 4'D., TY 24 F&G STA. 26+65.39, 72.25' RT RIM = 782.44 INV = 778.14 (N) INV = 778.14 (E)
- 125 INLET, TY A, TY 24 F&G STA. 26+97.96, 87.60' RT RIM = 782.44 INV = 778.22 (W)
- 126 INLET, TY A, TY 24 F&G STA. 27+75, 18.0' LT RIM = 783.82 INV = 778.01 (S)
- 127 CB, TY A, 4'D., TY 24 F&G STA. 27+75, 18.0' RT RIM = 783.82 INV = 777.83 (N) INV = 777.83 (S)
- 128 MH, TY A, 4'D., TY 1 F&L STA. 27+70.33, 30' RT RIM = 783.50 INV = 777.80 (E) INV = 777.80 (W) INV = 777.80 (N) INV = 777.80 (S)
- 129 INLET, TY A, TY 24 F&G STA. 29+25, 18.0' LT RIM = 784.57 INV = 780.26 (S)
- 130 CB, TY A, 4'D., TY 24 F&G STA. 29+25, 18.0' RT RIM = 784.57 INV = 780.08 (W) INV = 780.08 (N)



- 131 INLET, TY A, TY 24 F&G STA. 31+40, 18.0' LT RIM = 784.11 INV = 781.46 (S)
- 132 RD CB, TY A, 4'D., TY 24 F&G STA. 29+25, 18.0' RT RIM = 784.11 INV = 781.28 (E) INV = 781.28 (N)
- 132A INLET, TY A, TY 24 F&G STA. 31+73.39, 40.8' RT RIM = 782.75 INV = 779.46 (E)
- 132B RD CB, TY A, 4'D., TY 24 F&G STA. 32+14, 40.80' RT RIM = 782.75 INV = 779.16 (E) INV = 779.16 (W)
- 132C RD CB, TY A, 4'D., TY 24 F&G (OPEN LID) STA. 28+00, 36.5' RT RIM = 782.40 INV = 778.09 (W)
- 17 12" SS, CL. A T-1 12' @ 0.50%, TBF = 1.1 CY
- 18 12" SS, CL. A T-1 28' @ 0.50%, TBF = 5.3 CY
- 19 15" SS, CL. A T-1 55' @ 0.25%, TBF = 9.9 CY
- 20 12" SS, CL. A T-1 26' @ 0.50%, TBF = 5.6 CY
- 21 12" SS, CL. A T-1 12' @ 0.25%, TBF = 33.6 CY
- 22 12" SS, CL. A T-1 3' @ 1.00%, TBF = 1.0 CY
- 23 12" SS, CL. A T-1 26' @ 0.50%, TBF = 7.8 CY
- 24 15" SS, CL. A T-1 175' @ 0.20%, TBF = 124.4 CY
- 25 12" SS, CL. A T-1 3' @ 1.00%, TBF = 2.3 CY
- 26 12" SS, CL. A T-1 34' @ 0.50%, TBF = 22.0 CY
- 27 15" SS, CL. A T-1 65' @ 0.22%, TBF = 54.0 CY
- 28 12" SS, CL. A T-1 49' @ 0.29%, TBF = 31.8 CY
- 29 12" SS, CL. A T-1 35' @ 0.25%, TBF = 13.1 CY
- 30 15" SS, CL. A T-1 105' @ 0.22%, TBF = 81.8 CY
- 31 12" SS, CL. A T-1 3' @ 1.00%, TBF = 2.5 CY
- 32 12" SS, CL. A T-1 36' @ 0.31%, TBF = 30.2 CY
- 33 12" SS, CL. A T-1 155' @ 1.47%, TBF = 110.4 CY
- 34 36" @ 0.50%, TBF = 13.8 CY
- 35 12" SS, CL. A T-1 36' @ 0.50%, TBF = 7.4 CY
- 36 260' @ 1.05%, TBF = 55.9 CY
- 36A 12" SS, CL. A T-1 29' @ 1.00%
- 36B 12" SS, CL. A T-1 11' @ 0.50%, TBF = 3.9 CY
- 36C 12" SS, CL. A T-1 12' @ 10.50%
- 36D 12" SS, CL. A T-1 29' @ 1.00%

NOTE:
FOR PIPE UNDERDRAIN LOCATIONS, REFER TO THE SCHEDULE OF QUANTITIES, PAGE B.



REVISIONS	
NAME	DATE

VILLAGE OF GRAYSLAKE
SHOREWOOD ROAD
IL ROUTE 83 TO ROLLINS ROAD
DRAINAGE PLANS
STATION 19+50 TO STATION 34+00

SCALE: HORIZ: 1" = 50'
VERT: 1" = 5'

DATE: 4/21/06

DESIGNED BY: MTK
DRAWN BY: MTK/BS/GP
CHECKED BY:

DATE	BY

DATE	BY