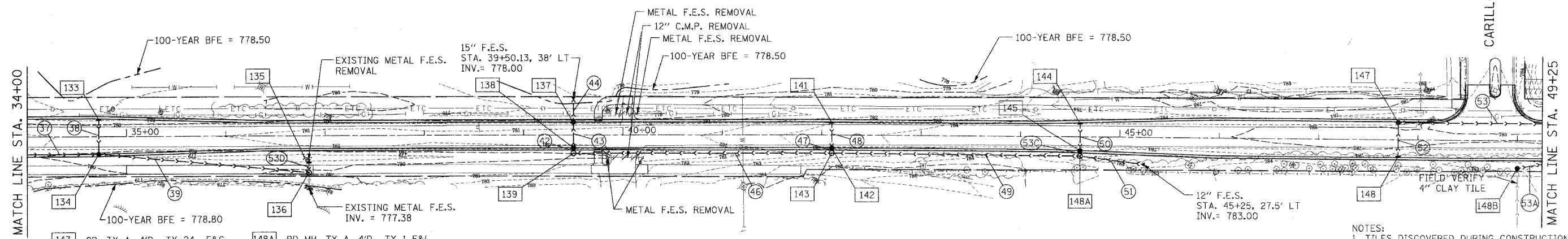


F.A. RTE.	SECTION	COUNTY	TOTAL SHEETS	SHEET NO.
03-00052-00-PV	LAKE		78	32
STA. 34+00		TO STA. 49+25		
FED. ROAD DIST. NO.		ILLINOIS FED. AID PROJECT		
CONTRACT NUMBER 63002				

- 133 INLET, TY A, TY 24 F&G STA. 34+72.05, 17.87' RT RIM = 780.55 INV = 777.97 (S)
- 134 RD CB, TY A, 4'D., TY 24 F&G STA. 34+72.05, 18' RT RIM = 780.55 INV = 777.79 (E) INV = 777.79 (W) INV = 777.79 (N)
- 135 INLET, TY A, TY 8 GRATE STA. 36+83.74, 27.0' RT RIM = 779.70 INV = 777.43 (S)
- 136 RD MH, TY A, 4'D., TY 1 F&L STA. 36+83.74, 36' RT RIM = 780.00 INV = 777.40 (N) INV = 777.40 (S)
- 137 RD CB, TY A, 4'D., TY 24 F&G STA. 39+50.13, 13.0' RT RIM = 780.99 INV = 778.06 (S)
- 138 RD CB, TY A, 4'D., TY 24 F&G STA. 39+50.13, 13' RT RIM = 780.99 INV = 778.13 (N) INV = 778.13 (S)
- 139 RD MH, TY A, 4'D., TY 1 F&L STA. 39+50.13, 18.5' RT RIM = 780.50 INV = 778.14 (E) INV = 778.14 (W)
- 141 INLET, TY A, TY 24 F&G STA. 42+10, 13.0' LT RIM = 782.72 INV = 779.71 (S)
- 142 RD CB, TY A, 4'D., TY 24 F&G STA. 42+10, 13' RT RIM = 782.72 INV = 779.64 (N) INV = 779.64 (S)
- 143 RD MH, TY A, 4'D., TY 1 F&L STA. 42+10, 18.5' RT RIM = 782.63 INV = 779.63 (E) INV = 779.63 (W)
- 144 INLET, TY A, TY 24 F&G STA. 44+60, 14.10' LT RIM = 784.57 INV = 781.23 (S)
- 145 RD CB, TY A, 4'D., TY 24 F&G STA. 44+60, 14.10' RT RIM = 784.57 INV = 781.16 (E) INV = 781.16 (W)
- 146 INLET, TY A, TY 8 GRATE STA. 45+25, 25' RT RIM = 783.00 INV = 781.50 (W)

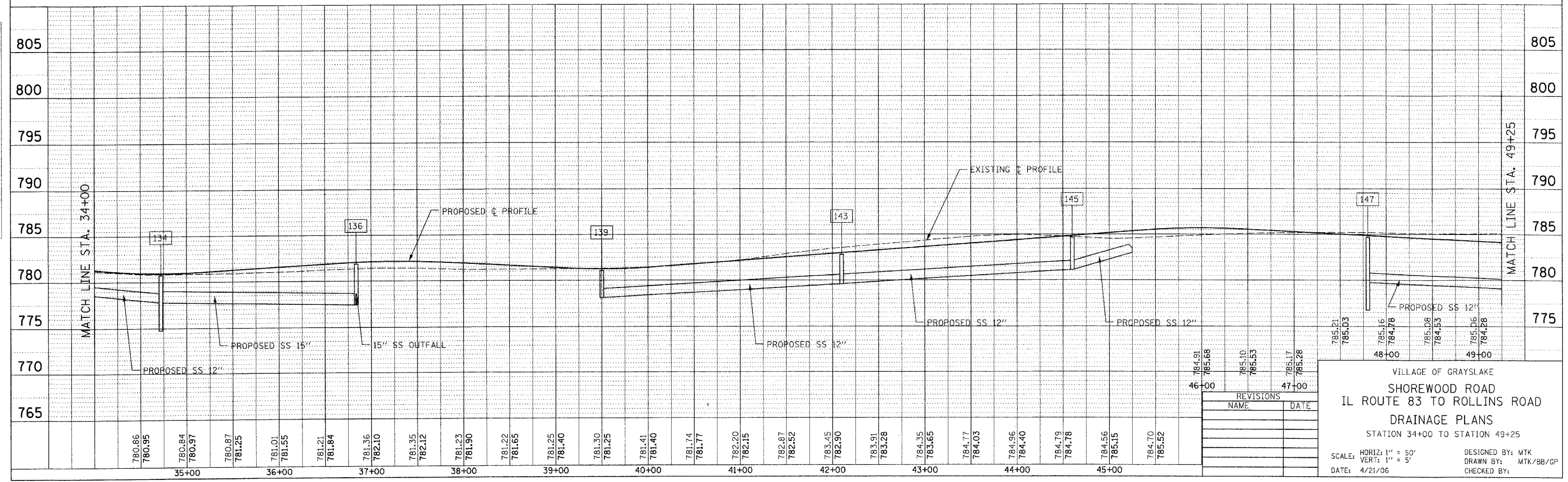


- 147 CB, TY A, 4'D., TY 24 F&G STA. 47+80, 18.0' LT RIM = 784.22 INV = 779.77 (E) INV = 779.77 (S)
- 148 INLET, TY A, TY 24 F&G STA. 47+80, 18.0' RT RIM = 784.52 INV = 779.95 (N)
- 148A RD MH, TY A, 4'D., TY 1 F&L STA. 44+60, 19.60' RT RIM = 784.77 INV = 781.15 (N) INV = 781.15 (E) INV = 781.15 (W)
- 148B RD CB, TY A, 4'D., TY 8 GRATE STA. 49+00, 28' RT RIM = 782.75 INV = 779.76
- 37 12" SS, CL. A T-1 72' @ 1.05%, TBF = 15.5 CY
- 38 12" SS, CL. A T-1 36' @ 0.50%, TBF = 7.4 CY
- 39 18" SS, CL. A T-1 212' @ 0.17%, TBF = 12.2 CY
- 42 12" SS, CL. A T-1 3' @ 0.33%, TBF = 0.6 CY
- 43 12" SS, CL. A T-1 26' @ 0.27%, TBF = 5.9 CY
- 44 15" SS, CL. A T-1 25' @ 0.24%, TBF = 0.8 CY
- 46 12" SS, CL. A T-1 260' @ 0.57%, TBF = 53.3 CY
- 47 12" SS, CL. A T-1 3' @ 0.25%, TBF = 0.7 CY
- 48 12" SS, CL. A T-1 26' @ 0.25%, TBF = 6.1 CY
- 49 12" SS, CL. A T-1 250' @ 0.60%, TBF = 67.0 CY
- 50 12" SS, CL. A T-1 28' @ 0.25%, TBF = 7.8 CY
- 51 12" SS, CL. A T-1 65' @ 2.83%, TBF = 2.9 CY
- 52 12" SS, CL. A T-1 36' @ 0.50%, TBF = 18.3 CY
- 53 12" SS, CL. A T-1 145' @ 0.44%, TBF = 91.6 CY
- 53A 12" SS, CL. A T-1 25' @ 1.00%, TBF = 3.7 CY
- 53C 12" SS, CL. A T-1 3' @ 0.25%, TBF = 0.9 CY
- 53D 12" SS, CL. A T-1 10' @ 0.25%

NOTES:
 1. TILES DISCOVERED DURING CONSTRUCTION THAT WERE NOT IDENTIFIED DURING THE INVESTIGATION SHALL BE INCORPORATED INTO THE DEVELOPED STORMWATER SYSTEM AND RECORDED INTO THE AS-BUILT DOCUMENTS. WHERE TILES ARE CONNECTED AT POINTS OF INGRESS OR EGRESS FROM THE SITE, OBSERVATION STRUCTURES SHALL BE INSTALLED.
 2. FOR PIPE UNDERDRAIN LOCATIONS, REFER TO THE SCHEDULE OF QUANTITIES, PAGE 8.

DATE	
BY	
PLANNED	
SURVEYED	
ALIGNED	
CHECKED	
NOTE BOOK	
NO.	

DATE	
BY	
PROFILE	
GRADES	
CHECKED	
NOTE BOOK	
NO.	



REVISIONS	NAME	DATE

VILLAGE OF GRAYSLAKE
 SHOREWOOD ROAD
 IL ROUTE 83 TO ROLLINS ROAD
 DRAINAGE PLANS
 STATION 34+00 TO STATION 49+25

SCALE: HORIZ: 1" = 50'
 VERT: 1" = 5'
 DATE: 4/21/06

DESIGNED BY: MTK
 DRAWN BY: MTK/BB/CP
 CHECKED BY: