

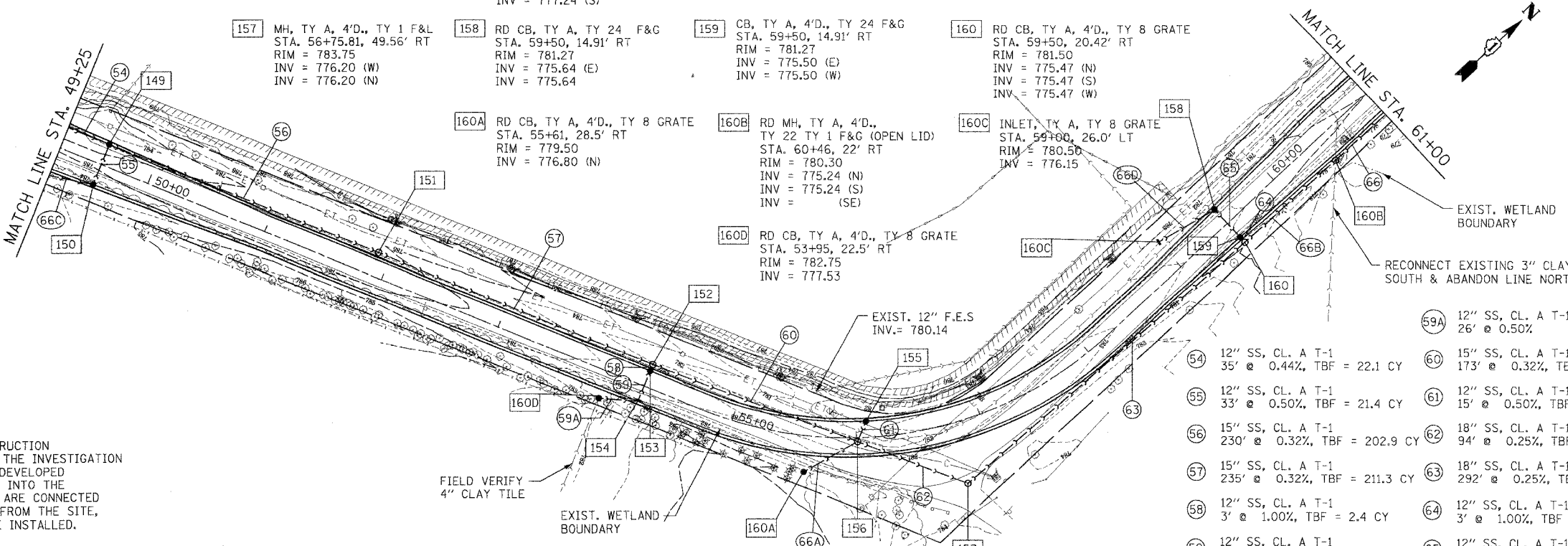
F.A. RTE.	SECTION	COUNTY	TOTAL SHEETS	SHEET NO.
03-00052-00-PV	LAKE		78	33
STA. 49+25		TO STA. 61+00		
FED. ROAD DIST. NO.		ILLINOIS FED. AID PROJECT		
CONTRACT NUMBER 63002				

- 149 CB, TY A, 4'D., TY 24 F&G STA. 49+60, 17' LT RIM = 783.76 INV = 778.98 (W) INV = 778.73 (E) INV = 778.98 (S)
- 150 RD CB, TY A, TY 24 F&G STA. 49+60, 17.0' RT RIM = 783.76 INV = 779.15 (N) INV = 779.15 (W)
- 151 MH, TY A, 4'D., TY 1 F&L STA. 51+90, 18.5' LT RIM = 785.00 INV = 777.99 (E) INV = 777.99 (W)
- 152 MH, TY A, 4'D., TY 1 F&L STA. 54+25, 18.5' LT RIM = 782.50 INV = 777.24 (E) INV = 777.24 (S)
- 153 CB, TY A, 4'D., TY 24 F&G STA. 54+25, 13.0' LT RIM = 783.13 INV = 777.27 (N) INV = 777.27 (S)
- 154 INLET, TY A, TY 24 F&G STA. 54+25, 13.0' RT RIM = 783.13 INV = 777.40 (N) INV = 777.40 (W)
- 155 CB, TY A, 4'D., TY 24 F&G STA. 56+08.23, 13.0' LT RIM = 781.22 INV = 776.76 (S)

- 156 MH, TY A, 4'D., TY 1 F&L STA. 56+00.80, 3.03' RT RIM = 781.70 INV = 776.68 (W) INV = 776.43 (E) INV = 776.68 (N) INV = 776.68 (S)
- 157 MH, TY A, 4'D., TY 1 F&L STA. 56+75.81, 49.56' RT RIM = 783.75 INV = 776.20 (W) INV = 776.20 (N)
- 158 RD CB, TY A, TY 24 F&G STA. 59+50, 14.91' RT RIM = 781.27 INV = 775.64 (E) INV = 775.64
- 159 CB, TY A, 4'D., TY 24 F&G STA. 59+50, 14.91' RT RIM = 781.27 INV = 775.50 (E) INV = 775.50 (W)
- 160 RD CB, TY A, 4'D., TY 8 GRATE STA. 59+50, 20.42' RT RIM = 781.50 INV = 775.47 (N) INV = 775.47 (S) INV = 775.47 (W)

- 160A RD CB, TY A, 4'D., TY 8 GRATE STA. 55+61, 28.5' RT RIM = 779.50 INV = 776.80 (N)
- 160B RD MH, TY A, 4'D., TY 22 TY 1 F&G (OPEN LID) STA. 60+46, 22' RT RIM = 780.30 INV = 775.24 (N) INV = 775.24 (S) INV = (SE)
- 160C INLET, TY A, TY 8 GRATE STA. 59+00, 26.0' LT RIM = 780.50 INV = 776.15

- 160D RD CB, TY A, 4'D., TY 8 GRATE STA. 53+95, 22.5' RT RIM = 782.75 INV = 777.53



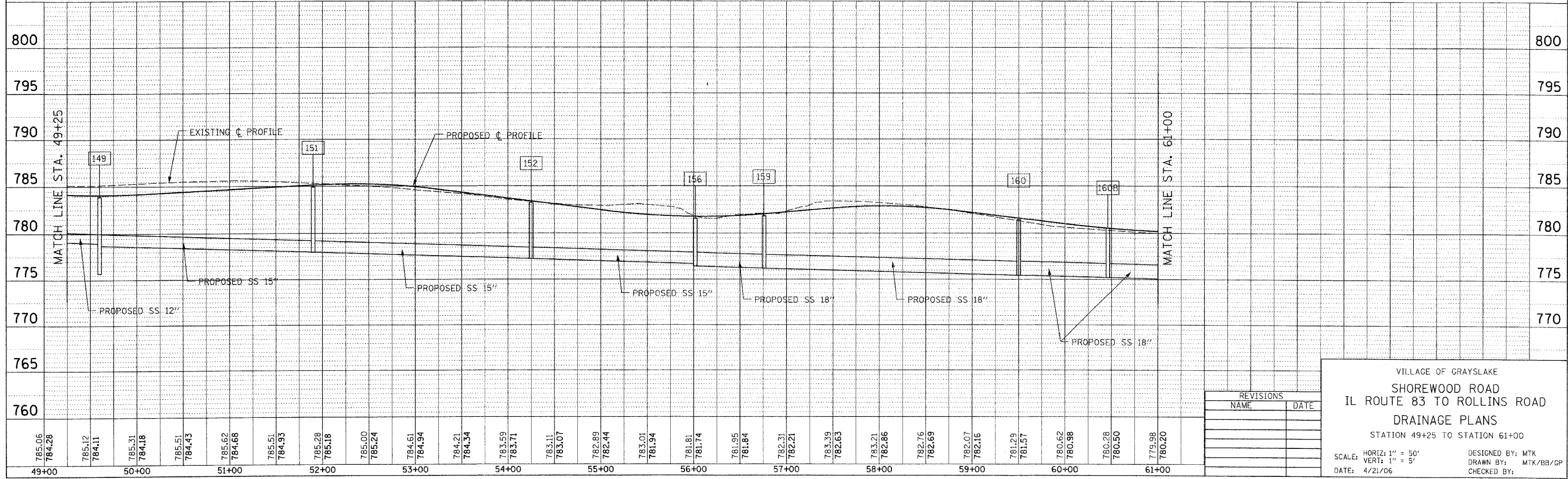
- 59A 12" SS, CL. A T-1 26' @ 0.50%
- 54 12" SS, CL. A T-1 35' @ 0.44%, TBF = 22.1 CY
- 55 12" SS, CL. A T-1 33' @ 0.50%, TBF = 21.4 CY
- 56 15" SS, CL. A T-1 230' @ 0.32%, TBF = 202.9 CY
- 57 15" SS, CL. A T-1 235' @ 0.32%, TBF = 211.3 CY
- 58 12" SS, CL. A T-1 3' @ 1.00%, TBF = 2.4 CY
- 59 12" SS, CL. A T-1 26' @ 0.50%, TBF = 21.4 CY
- 60 15" SS, CL. A T-1 173' @ 0.32%, TBF = 125.9 CY
- 61 12" SS, CL. A T-1 15' @ 0.50%, TBF = 9.7 CY
- 62 18" SS, CL. A T-1 94' @ 0.25%, TBF = 39.0 CY
- 63 18" SS, CL. A T-1 292' @ 0.25%, TBF = 204.4 CY
- 64 12" SS, CL. A T-1 3' @ 1.00%, TBF = 2.5 CY
- 65 12" SS, CL. A T-1 29' @ 0.50%, TBF = 23.4 CY
- 66 18" SS, CL. A T-1 57' @ 0.25%, TBF = 45.9 CY
- 66A 12" SS, CL. A T-1 49' @ 0.25%, TBF = 11.6 CY
- 66B 18" SS, CL. A T-1 93' @ 0.25%, TBF = 75.4 CY
- 66C 12" SS, CL. A T-1 36' @ 1.00%, TBF = 11.3 CY
- 66D 12" SS, CL. A T-1 51' @ 1.00%, TBF = 21.6 CY

NOTES:

- TILES DISCOVERED DURING CONSTRUCTION THAT WERE NOT IDENTIFIED DURING THE INVESTIGATION SHALL BE INCORPORATED INTO THE DEVELOPED STORMWATER SYSTEM AND RECORDED INTO THE AS-BUILT DOCUMENTS. WHERE TILES ARE CONNECTED AT POINTS OF INGRESS OR EGRESS FROM THE SITE, OBSERVATION STRUCTURES SHALL BE INSTALLED.
- FOR PIPE UNDERDRAIN LOCATIONS, REFER TO THE SCHEDULE OF QUANTITIES, PAGE 8.

PLAN	DATE
BY	
REVISIONS	
NO.	

PROFILE	DATE
BY	
REVISIONS	
NO.	



REVISIONS	
NAME	DATE

VILLAGE OF GRAYSLAKE
 SHOREWOOD ROAD
 IL ROUTE 83 TO ROLLINS ROAD
 DRAINAGE PLANS
 STATION 49+25 TO STATION 61+00

SCALE: HORIZ: 1" = 50'
 VERT: 1" = 5'

DESIGNED BY: MTK
 DRAWN BY: MTK/BB/JP
 CHECKED BY: MTK/BB/JP

DATE: 4/21/06