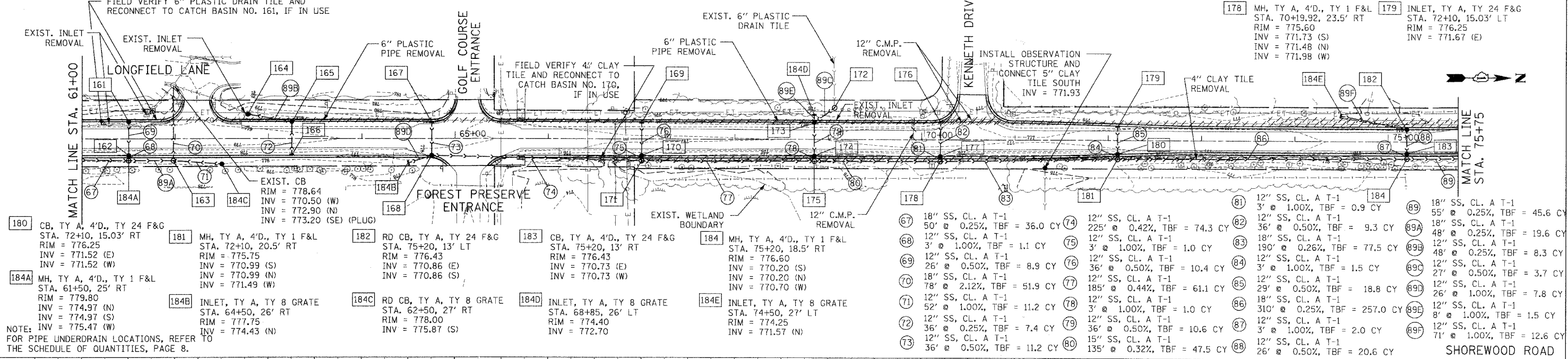


161	CB, TY A, 4'D., TY 24 F&G STA. 61+50, 18' LT RIM = 779.59 INV = 775.63 (N)	162	CB, TY A, 4'D., TY 24 F&G STA. 61+50, 18' RT RIM = 779.59 INV = 775.50 (W)	163	RD MH, TY A, 4'D., TY 1 F&L STA. 61+98.05, 25' RT RIM = 778.75 INV = 774.85 (S)	164	INLET, TY A, TY 8 GRATE STA. 62+77.85, 25.84' LT RIM = 778.00 INV = 775.88 (N)	165	RD CB, TY A, TY 24 F&G STA. 63+25, 18' LT RIM = 778.71 INV = 776.00 (E)	166	INLET, TY A, 4'D., TY 24 F&G STA. 63+25, 18' RT RIM = 778.71 INV = 776.09 (W)	167	INLET, TY A, TY 24 F&G STA. 64+75, 18' LT RIM = 777.96 INV = 774.35 (E)	168	RD CB, TY A, 4'D., TY 24 F&G STA. 64+75, 18' RT RIM = 777.96 INV = 774.17 (N)
-----	---	-----	---	-----	--	-----	---	-----	--	-----	--	-----	--	-----	--

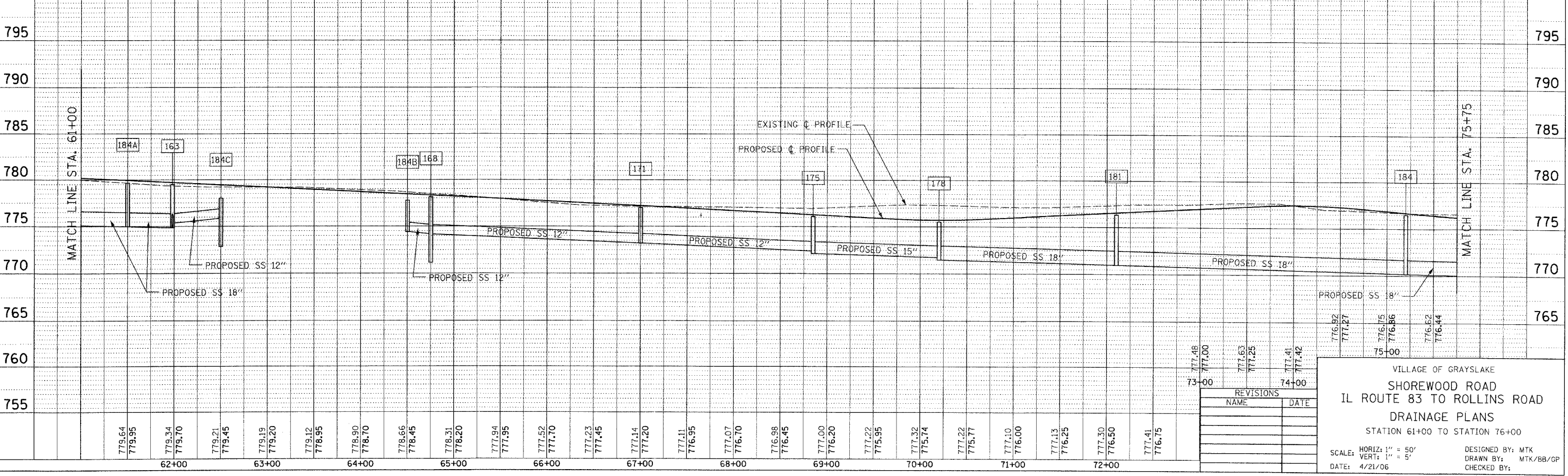
F.A. RTE.	SECTION	COUNTY	TOTAL SHEETS	SHEET NO.
03-0052-00-PV		LAKE	78	34
STA. 61+00		TO STA. 76+00		
FED. ROAD DIST. NO.		ILLINOIS FED. AID PROJECT		
CONTRACT NUMBER 63002				

169	INLET, TY A, TY 24 F&G STA. 67+00, 18' LT RIM = 776.84 INV = 773.43 (E)	170	RD CB, TY A, 4'D., TY 24 F&G STA. 67+00, 18' RT RIM = 776.84 INV = 773.25 (E)	171	RD MH, TY A, 4'D., TY 1 F&L STA. 67+00, 23.5' RT RIM = 777.20 INV = 773.22 (S)	172	RD MH, TY A, 4'D., TY 1 F&L STA. 69+06.70, 33' LT RIM = 776.50 INV = 772.77 (W)	173	INLET, TY A, TY 24 F&G STA. 68+85, 18' LT RIM = 775.91 INV = 772.62 (NW)	174	RD CB, TY A, 4'D., TY 24 F&G STA. 68+85, 18' RT RIM = 775.91 INV = 772.44 (E)	175	RD MH, TY A, 4'D., TY 1 F&L STA. 68+85, 23.4' RT RIM = 776.30 INV = 772.41 (S)	176	INLET, TY A, TY 24 F&G STA. 70+19.92, 19.43' LT RIM = 775.33 INV = 772.19 (E)	177	RD CB, TY A, 4'D., TY 24 F&G STA. 70+19.92, 18' RT RIM = 775.33 INV = 772.01 (E)
-----	--	-----	--	-----	---	-----	--	-----	---	-----	--	-----	---	-----	--	-----	---



180	CB, TY A, 4'D., TY 24 F&G STA. 72+10, 15.03' RT RIM = 776.25 INV = 771.52 (E)	181	MH, TY A, 4'D., TY 1 F&L STA. 72+10, 20.5' RT RIM = 775.75 INV = 770.99 (S)	182	RD CB, TY A, TY 24 F&G STA. 75+20, 13' LT RIM = 776.43 INV = 770.86 (E)	183	CB, TY A, 4'D., TY 24 F&G STA. 75+20, 13' RT RIM = 776.43 INV = 770.73 (E)	184	MH, TY A, 4'D., TY 1 F&L STA. 75+20, 18.5' RT RIM = 776.60 INV = 770.20 (S)
-----	--	-----	--	-----	--	-----	---	-----	--

67	18" SS, CL. A T-1 50' @ 0.25%, TBF = 36.0 CY	74	12" SS, CL. A T-1 225' @ 0.42%, TBF = 74.3 CY	81	12" SS, CL. A T-1 3' @ 1.00%, TBF = 0.9 CY	88	18" SS, CL. A T-1 55' @ 0.25%, TBF = 45.6 CY
----	---	----	--	----	---	----	---



VILLAGE OF GRAYS LAKE
SHOREWOOD ROAD
IL ROUTE 83 TO ROLLINS ROAD
DRAINAGE PLANS
STATION 61+00 TO STATION 76+00

SCALE: HORIZ: 1" = 50'
VERT: 1" = 5'

DESIGNED BY: MTK
DRAWN BY: MTK/BB/GP
CHECKED BY:

DATE: 4/21/06

REVISIONS	
NAME	DATE