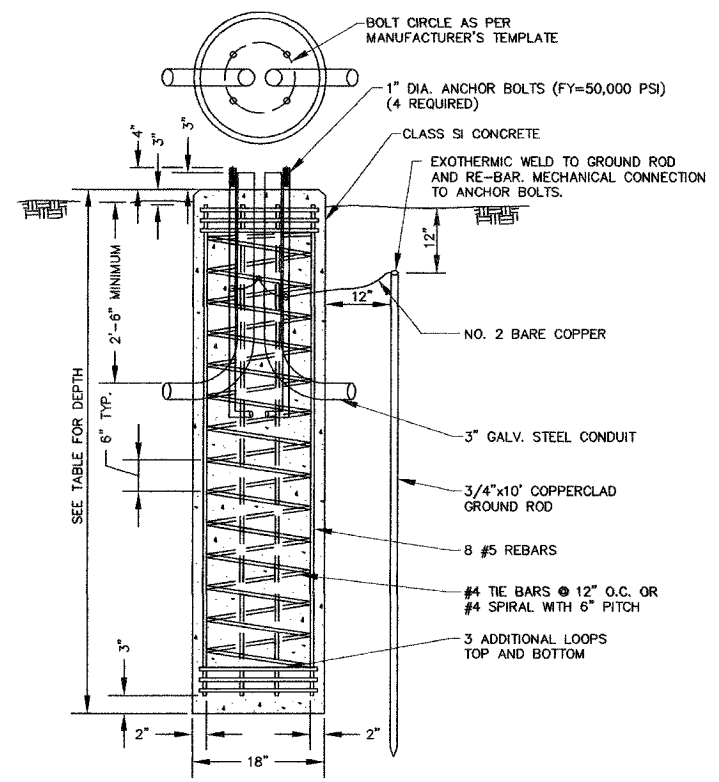


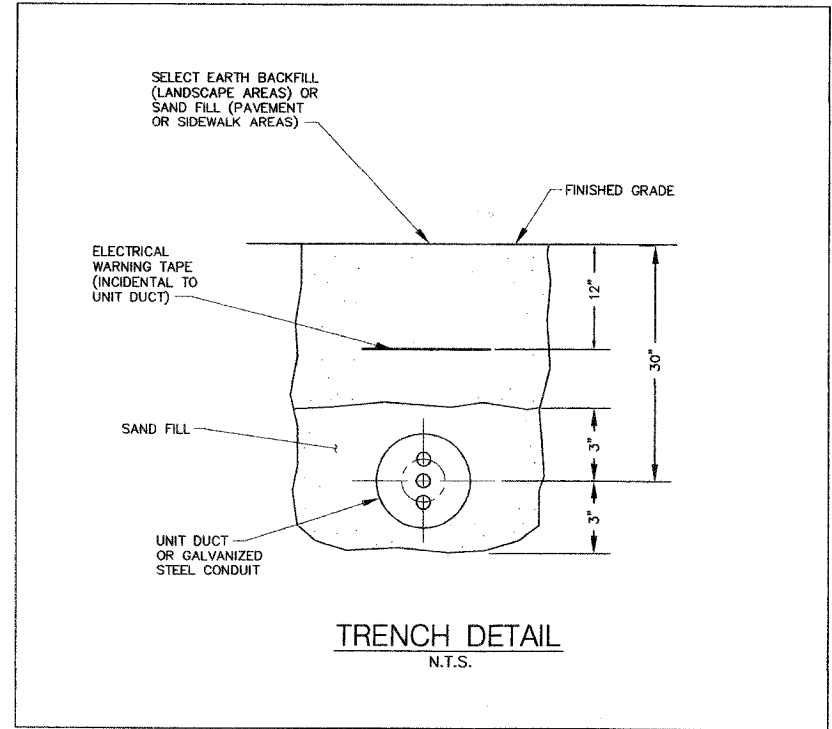
F.A.U. RTE.	SECTION	COUNTY	TOTAL SHEETS	SHEET NO.
2689	06-00087-00-PK	COOK	18	15
STA.		TO STA.		
		ILLINOIS FED. AID PROJECT		
CONTRACT NO. 63067				

FOUNDATION SCHEDULE		
TYPE OF SOILS		
DESCRIPTION	STANDARDS	EMBEDMENT
SOFT CLAY	Qu = 0.25 to 0.50 tons/sq ft	9' - 8"
MEDIUM CLAY	Qu = 0.50 to 1.00 tons/sq ft	7' - 0"
DENSE CLAY	Qu = 1.00 to 2.00 tons/sq ft	6' - 0"
LOOSE SAND	N = 4 TO 10	7' - 8"
MEDIUM SAND	N = 10 TO 30	6' - 6"
DENSE SAND	N = 30 TO 50	6' - 0"

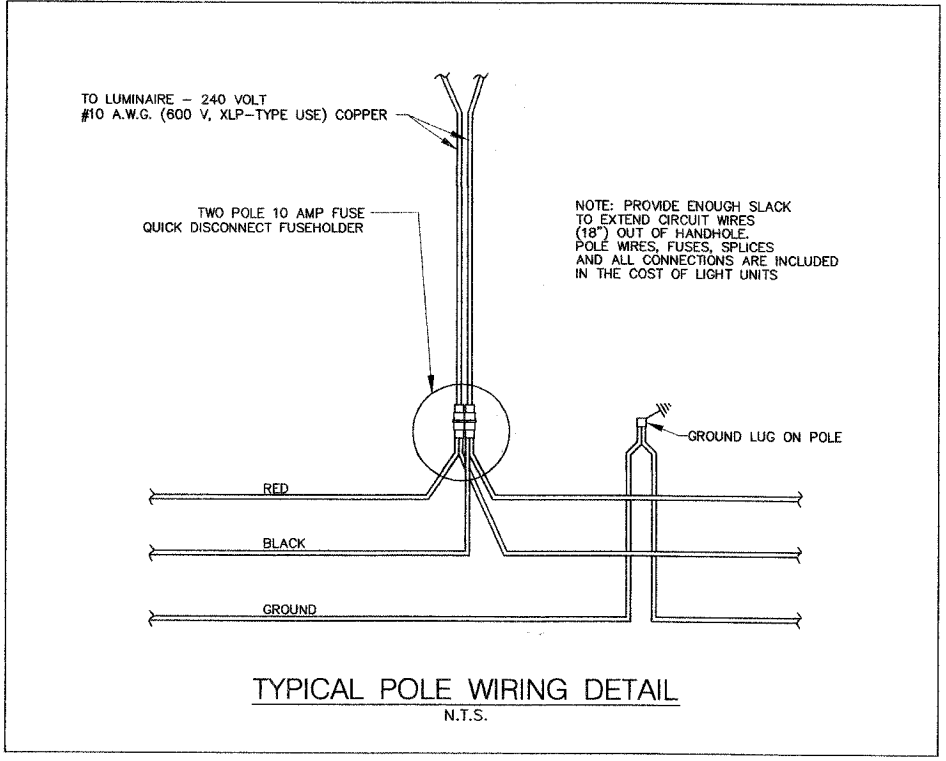


- NOTES:
1. CONCRETE SHALL BE CLASS SI WITH A MINIMUM COMPRESSIVE STRENGTH OF 3500 PSI.
 2. REINFORCING BARS SHALL BE NEW BILLET STEEL (ASTM A615), FY=60,000 PSI, DEFORMED PER ASTM A307.
 3. THE HOLE FOR THE FOUNDATION SHALL BE AUGERED.
 4. THE TOP 10" OF THE ANCHOR BOLTS SHALL BE GALVANIZED. EACH ANCHOR BOLT SHALL BE SUPPLIED WITH TWO FLAT GALVANIZED STEEL WASHERS.

LIGHT POLE FOUNDATION
N.T.S.



TRENCH DETAIL
N.T.S.



TYPICAL POLE WIRING DETAIL
N.T.S.

REVISIONS	
NAME	DATE

ILLINOIS DEPARTMENT OF TRANSPORTATION
F.A.U. ROUTE 2689
WOLF ROAD COMMUTER PARKING FACILITY EXPANSION

LIGHTING DETAILS

SCALE: 1"=20'
DATE:

DRAWN BY: BCD
CHECKED BY: JDM

JJB JAMES J. BENES & ASSOCIATES, INC.
950 Warrenville Road, Suite 101, Lisle, Illinois 60532
Tel. (630) 719-7570 · Fax (630) 719-7589