

F.A.U. RTE.	SECTION	COUNTY	TOTAL SHEETS	SHEET NO.
2689	06-00087-00-PK	COOK	18	1
FED. ROAD DIST. NO.	ILLINOIS	FED. AID PROJECT		
CONTRACT NO: 63057				

STATE OF ILLINOIS
DEPARTMENT OF TRANSPORTATION
DIVISION OF HIGHWAYS

PLANS FOR PROPOSED
FEDERAL AID HIGHWAY

CONGESTION MITIGATION
AND AIR QUALITY (CMAQ)
IMPROVEMENT PROGRAM
SECTION: 06-00087-00-PK
WOLF ROAD (FAU 2689)
COMMUTER PARKING FACILITY EXPANSION
PROJECT: CMM-8003(751)
VILLAGE OF WESTERN SPRINGS
COOK COUNTY
C-91-144-07

FOR INDEX OF SHEETS, SEE SHEET NO. 2

TRAFFIC DATA

ADT:

WOLF ROAD = 9700

SPEED LIMIT:

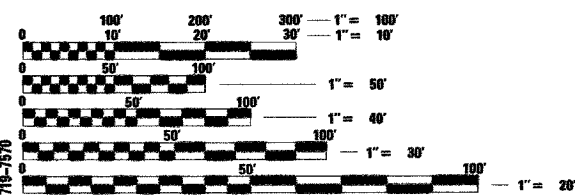
WOLF ROAD = 35 MPH (POSTED)
40 MPH (DESIGN)

DESIGN DESIGNATION: COLLECTOR



LOCATION OF SECTION INDICATED THUS: - [Symbol] -

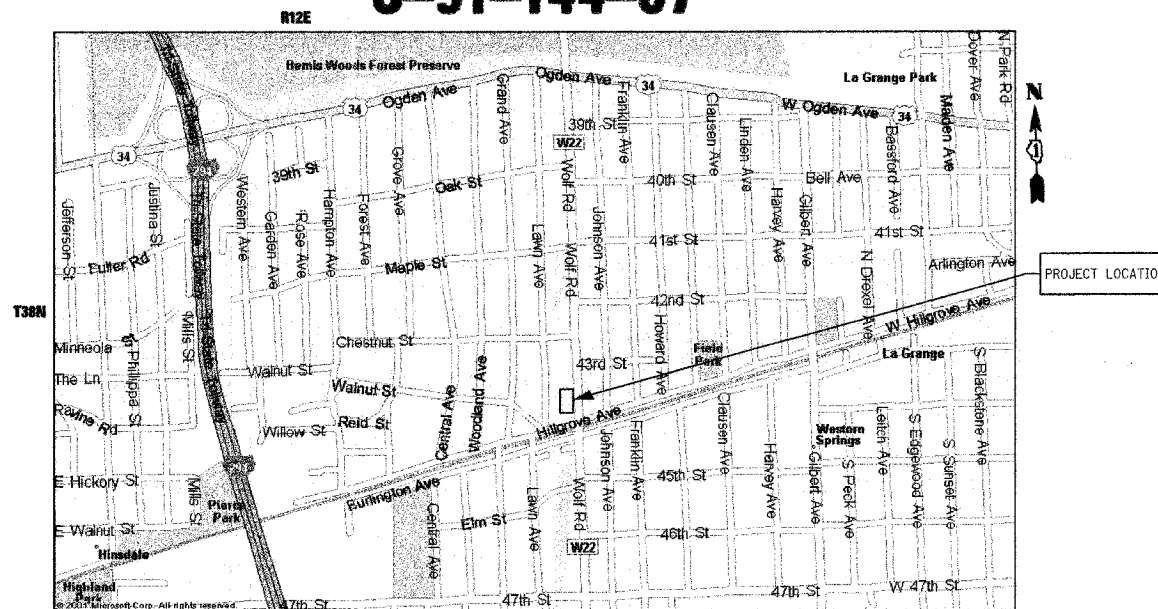
PROJECT LOCATED IN
VILLAGE OF WESTERN SPRINGS



FULL SIZE PLANS HAVE BEEN PREPARED USING STANDARD ENGINEERING SCALES. REDUCED SIZED PLANS WILL NOT CONFORM TO STANDARD SCALES. IN MAKING MEASUREMENTS ON REDUCED PLANS, THE ABOVE SCALES MAY BE USED.

J.U.L.I.E.
JOINT UTILITY LOCATION INFORMATION FOR EXCAVATION
1-800-892-0123

CONTRACT NO. 63057



LOCATION MAP
SCALE: NTS

GROSS & NET LENGTH OF PROJECT: 106.00 FT. (0.019 MILES)

STATE OF ILLINOIS
DEPARTMENT OF TRANSPORTATION
DIVISION OF HIGHWAYS

APPROVED: 6.2. 2008

William M. [Signature]
Western Springs, Director of Municipal Services

PASSED: JUNE 5, 2008

Christopher Holt
District 1 Engineer of Local Roads & Streets

Releasing for Bid
Based on Limited
Review JUNE 6, 2008

Diane M. O'Keefe
Deputy Director of Highways, Region 1 Engineer

PRINTED BY AUTHORITY OF THE STATE OF ILLINOIS

JJB JAMES J. BENES & ASSOCIATES
CONSULTING ENGINEERS
950 WARRENVILLE ROAD, SUITE 101
LISLE, IL 60532
(630) 719-7570

SIGNATURE: *[Signature]*
DATE: 6/2/08

IL LICENSE NO: 062-080441
EXP. DATE: NOVEMBER 30, 2009
FIELD: JAMES J. BENES AND ASSOCIATES, INC.
CIVIL ENGINEERING



FIELD ENGINEER: MARILIN SOLOMON (847) 705-4407
CONSULTANT: JAMES J. BENES & ASSOCIATES, INC. (630) 719-7570

F.A.U. RTE.	SECTION	COUNTY	TOTAL SHEETS	SHEET NO.
2689	06-00087-00-PK	COOK	18	2
STA.		TO STA.		
FED. ROAD DIST. NO.	ILLINOIS	FED. AID PROJECT		
CONTRACT NO. 63057				

LIST OF STATE STANDARDS

000001-05	STANDARD SYMBOLS, ABBREVIATIONS AND PATTERNS
280001-04	TEMPORARY EROSION CONTROL SYSTEMS
420001-07	PAVEMENT JOINTS
420101-04	7.2 m (24') JOINTED PCC PAVEMENT
420111-02	PCC PAVEMENT ROUNDOUTS
420701-02	PAVEMENT FABRIC
424001-05	CURB RAMPS FOR SIDEWALKS
442101-07	CLASS B PATCHES
602001	CATCH BASIN TYPE A
602301-01	INLET TYPE A
602401-01	MANHOLE TYPE A
602601-01	PRECAST REINFORCED CONCRETE FLAT SLAB TOP
602701-01	CAST IRON STEPS
604001-02	FRAME AND LIDS TYPE 1
606001-03	CONCRETE CURB TYPE B AND COMBINATION CONCRETE CURB AND GUTTER
701301-02	LANE CLOSURE, 2L, 2W, SHORT TIME OPERATIONS
701501-04	URBAN LANE CLOSURE 2L, 2W UNDIVIDED
701801-03	LANE CLOSURE MULTILANE 1W OR 2W CROSSWALK OR SIDEWALK CLOSURE
701901	TRAFFIC CONTROL DEVICES
TC-10	TRAFFIC CONTROL AND PROTECTION FOR SIDE ROADS, INTERSECTIONS, AND DRIVEWAYS
TC-13	DISTRICT ONE TYPICAL PAVEMENT MARKINGS

C.C.H.D. CONSTRUCTION NOTES

(FOR PLACEMENT OF P.C.C. PAVEMENT, MEDIAN, AND CURB AND GUTTER)

- SAW CUT THE FULL DEPTH OF EXISTING PAVEMENT, MEDIAN, AND CURB AND GUTTER, AT THE LIMITS OF REMOVAL.
- PAVEMENT ~~AND TYPE C-4 MEDIAN~~ SHALL BE 10 INCH DEPTH P.C. CONCRETE, WITH PAVEMENT FABRIC, ON 6 INCH SUBBASE GRANULAR MATERIAL, TYPE B.
- CONSTRUCT PAVEMENT FABRIC IN ACCORDANCE WITH I.D.O.T. STANDARD NO. 420701, AND PROVIDE 3 1/2 INCHES OF CLEARANCE BETWEEN THE PAVEMENT SURFACE AND THE TOP OF THE FABRIC.
- DISREGARD ALL DETAILS AND NOTES REGARDING PAVEMENT BLOCKOUT ON I.D.O.T. STANDARD NO. 420701, AND COMPLY WITH I.D.O.T. STANDARD NO. 420111 AT ALL DRAINAGE/UTILITY STRUCTURE LOCATIONS.
- WHERE THE PROPOSED PAVEMENT ~~OR TYPE C-4 MEDIAN~~ ABUTS THE EXISTING PAVEMENT LONGITUDINALLY, PROVIDE A TIED LONGITUDINAL CONSTRUCTION JOINT IN ACCORDANCE WITH I.D.O.T. STANDARD 420001, USING 3/4 INCH DIAMETER TIE BARS AT 24 INCH CENTERS.
- WHERE THE PROPOSED PAVEMENT ~~OR TYPE C-4 MEDIAN~~ ABUTS THE EXISTING PAVEMENT ~~OR TYPE C-4 MEDIAN~~ TRANSVERSELY, PROVIDE A TRANSVERSE JOINT IN ACCORDANCE WITH I.D.O.T. STANDARD 442101, USING 1 1/2 INCH DIAMETER DOWEL BARS AT 12 INCH CENTERS.
- PROVIDE TRANSVERSE SAWS CONSTRUCTION JOINTS EVERY 40 FEET IN ACCORDANCE WITH I.D.O.T. STANDARD NO. 420001, USING 1 1/2 INCH DIAMETER DOWEL BARS AT 12 INCH CENTERS, AND ALIGN PROPOSED JOINTS WITH EXISTING JOINTS. SAWS GROOVE AND JOINT SEAL SHALL BE CONSTRUCTED IN ACCORDANCE WITH C.C.H.D. DETAIL (DISREGARD SAWS CONSTRUCTION JOINT DETAIL SHOWN ON I.D.O.T. STANDARD.
- IF A PROPOSED TRANSVERSE SAW CUT IS LOCATED LESS THAN 10 FEET FROM AN EXISTING TRANSVERSE JOINT, THEN THE EXISTING PAVEMENT ~~OR TYPE C-4 MEDIAN~~ SHALL BE REMOVED AND REPLACED UP TO THE EXISTING TRANSVERSE JOINT.
- PAVEMENT PATCHES SHALL BE CLASS B, CONSTRUCTED IN ACCORDANCE WITH I.D.O.T. STANDARD NO. 442101, AND SHALL EXTEND THE FULL WIDTH OF THE EXISTING LANE(S). WHERE PATCHING MORE THAN ONE LANE WIDTH, PROVIDE A TIED LONGITUDINAL JOINT (CONSTRUCTION OR SAWS) BETWEEN LANES, IN ACCORDANCE WITH I.D.O.T. STANDARD NO. 420001. C.C.H.D. CONSTRUCTION NOTES NO. 1 THROUGH 8 SHALL APPLY TO THE CONSTRUCTION OF CLASS B PATCHES.
- CURB AND GUTTER SHALL BE CONSTRUCTED AND TIED INTO ABUTTING EXISTING OR PROPOSED P.C.C. PAVEMENT IN ACCORDANCE WITH I.D.O.T. STANDARD NOS. 606001 AND 420001, USING 3/4 INCH DIAMETER TIE BARS AT 24 INCH CENTERS.
- ~~CONSTRUCT TYPE C-4 AND TYPE M-7 MEDIANS IN ACCORDANCE WITH THE C.C.H.D. MEDIAN STANDARD.~~
- ~~PLACEMENT OF CATCH BASINS WITHIN TYPE M-7 MEDIAN SHALL BE IN ACCORDANCE WITH THE C.C.H.D. POLICY FOR DRAINING TYPE M-7 MEDIAN STANDARD.~~
- ~~WHERE A MEDIAN OPENING IS PROVIDED, THE PAVEMENT SHALL BE CROWNED AT THE CENTERLINE USING A ONE PERCENT GROSS SLOPE.~~
- INCLUDE APPLICABLE I.D.O.T. AND C.C.H.D. STANDARDS IN THE PLANS.
- ALL TRENCHES WITHIN THE COUNTY RIGHT OF WAY SHALL BE BACKFILLED WITH FA-6 SAND IN ACCORDANCE WITH ARTICLE 550.07 OF THE I.D.O.T. STANDARD SPECIFICATIONS. THE BACKFILLING MUST EXTEND UP TO THE PROPOSED SUBBASE IN PAVEMENT SECTIONS.

C.C.H.D. CONSTRUCTION NOTES APPLY TO AREA WITHIN COOK COUNTY RIGHT-OF-WAY AT INTERSECTION OF BURLINGTON AVENUE AND WOLF ROAD.

GENERAL NOTES

- ALL CONSTRUCTION SHALL BE DONE IN ACCORDANCE WITH THE LATEST VERSION OF THE I.D.O.T. STANDARD SPECIFICATIONS FOR ROAD AND BRIDGE CONSTRUCTION.
- ACCESS TO LOCAL RESIDENCES AND BUSINESSES SHALL BE MAINTAINED DURING CONSTRUCTION.
- THE CONTRACTOR SHALL GIVE THE MUNICIPALITY THREE (3) WORKING DAYS NOTICE PRIOR TO THE COMMENCEMENT OF WORK. (JAMES J. BENES AND ASSOCIATES, INC: (630) 719-7570)
- ALL ELEVATIONS ARE ON U.S.G.S. DATUM.
- DO NOT SCALE PLANS FOR CONSTRUCTION DIMENSIONS.
- NEITHER THE ENGINEER, NOR THE OWNER, SHALL ASSUME ANY OF THE RESPONSIBILITIES OF THE CONTRACTOR'S SUPERINTENDENT OR OF SUBCONTRACTORS. ADDITIONALLY, NEITHER THE ENGINEER, NOR THE OWNER, SHALL ADVISE ON, OR ISSUE DIRECTIONS CONCERNING, ASPECTS OF CONSTRUCTION MEANS, METHODS, TECHNIQUES, SEQUENCES OR PROCEDURES, OR SAFETY PRECAUTIONS AND/OR PROGRAMS IN CONNECTION WITH THE WORK.
- THE LOCATIONS OF PUBLIC OR PRIVATE UTILITIES SHOWN ON THE PLANS ARE APPROXIMATE AND THEIR ACCURACY IS NOT GUARANTEED. THE CONTRACTOR SHALL VERIFY THE EXACT LOCATION AND ELEVATION OF ALL UTILITIES. THE CONTRACTOR SHALL REPORT ANY ENCOUNTERED DISCREPANCIES TO THE ENGINEER AT ONCE. THE CONTRACTOR SHALL TAKE DUE CARE IN ALL PHASES OF CONSTRUCTION TO PROTECT ANY UTILITIES WHICH MAY BE AFFECTED BY THE WORK.
- THE CONTRACTOR SHALL KEEP THE CONSTRUCTION AREA FREE OF DEBRIS AND/OR OBJECTIONABLE MATERIALS DURING CONSTRUCTION. THE CONTRACTOR SHALL INSPECT THE SITE DAILY FOR DEBRIS ON THE ROADWAY SURFACE. THE RIGHT-OF-WAY SHALL BE RESTORED WITH TOPSOIL 4" AND SOD.
- THE CONTRACTOR SHALL MAINTAIN ALL EXISTING DRAINAGE FACILITIES DURING CONSTRUCTION AND SHALL REPAIR ANY DRAINAGE FACILITIES DAMAGED DURING CONSTRUCTION. THIS WORK SHALL BE CONSIDERED INCIDENTAL TO THE CONTRACT AND WILL NOT BE PAID FOR SEPARATELY.
- THE CONTRACTOR SHALL VERIFY THE ELEVATIONS OF EXISTING STORM SEWERS PRIOR TO THE CONSTRUCTION OF PROPOSED STORM SEWER.
- THE RELOCATION OF SIGNS WILL NOT BE PAID FOR SEPARATELY BUT SHALL BE INCLUDED IN THE COST OF THE CONTRACT.
- BEFORE STARTING ANY EXCAVATION, THE CONTRACTOR SHALL CALL "J.U.L.I.E." AT (800) 892-0123 FOR FIELD LOCATIONS OF BURIED ELECTRIC, TELEPHONE, GAS, SEWERS AND WATER UTILITIES. (48 HOUR NOTIFICATION IS REQUIRED.)
- THE CONTRACTOR SHALL COORDINATE ALL CONSTRUCTION ACTIVITIES WITH ALL UTILITY COMPANIES.
- THE CONTRACTOR SHALL PROVIDE AND INSTALL TWO (2) WEIGHTED SAND BAGS FOR EACH TYPE I OR TYPE II BARRICADE USED, ONE WEIGHTED SAND BAG ACROSS EACH BOTTOM RAIL.
- SAW CUTTING OF PAVEMENT, SHOULDERS, CURB AND GUTTER, ETC. SHALL BE TO FULL DEPTH AND SHALL RESULT IN CLEAN, STRAIGHT EDGE ON THE PORTION REMAINING. ALL SAW CUTTING SHALL BE CONSIDERED INCLUDED IN THE COST OF THE ITEM REMOVED.
- STATIONING FOR ALL DRAINAGE STRUCTURES ARE GIVEN TO THE CENTER OF THE DRAINAGE STRUCTURE. OFFSETS FOR CURB LINE INLETS AND CATCH BASINS ARE GIVEN TO THE EDGE OF PAVEMENT. OFFSETS FOR ALL OTHER DRAINAGE STRUCTURES ARE GIVEN TO THE CENTER OF THE STRUCTURE. THE CONTRACTOR SHALL TAKE CARE TO ENSURE THAT ALL CURB LINE DRAINAGE STRUCTURES ARE PROPERLY ALIGNED WITH THE PROPOSED CURB AND GUTTER.
- TRANSVERSE PAVEMENT JOINTS SHALL BE SPACED AT A MAXIMUM OF 12 FEET.
- ALL STRUCTURE (MANHOLE, CATCH BASIN AND INLET) CONNECTIONS SHALL MEET THE REQUIREMENTS FOR FLEXIBLE WATER TIGHT CONNECTIONS PER ASTM C923.

INDEX OF DRAWINGS

1	TITLE SHEET
2	INDEX OF SHEETS, LIST OF STATE STANDARDS AND GENERAL NOTES
3	SUMMARY OF QUANTITIES
4	TYPICAL SECTIONS
5	REMOVAL PLAN
6	GEOMETRIC PLAN
7	DRAINAGE AND UTILITY PLAN
8	GRADING PLAN
9	STRIPING PLAN
10	LANDSCAPE PLAN
11	EROSION CONTROL PLAN
12	CROSS SECTIONS
13	CONSTRUCTION DETAILS
14-15	LIGHTING DETAILS
16	LANDSCAPE DETAILS
17-18	DISTRICT DETAILS

REVISIONS		ILLINOIS DEPARTMENT OF TRANSPORTATION F.A.U. 2689 WOLF ROAD COMMUTER PARKING FACILITY EXPANSION
NAME	DATE	
		INDEX OF DRAWINGS, GENERAL NOTES AND IDOT STANDARD DRAWINGS
SCALE: NTS		DRAWN BY SMP CHECKED BY JDS
DATE:		

ITEM CODE NUMBER	ITEM DESCRIPTION	UNIT	TOTAL QUANTITY
			J000
20100110	TREE REMOVAL (6 TO 15 UNITS DIAMETER)	UNIT	37
20100210	TREE REMOVAL (OVER 15 UNITS DIAMETER)	UNIT	41
20201200	REMOVAL AND DISPOSAL OF UNSUITABLE MATERIAL	CU YD	941
20700420	POROUS GRANULAR EMBANKMENT, SUBGRADE	CU YD	354
20800150	TRENCH BACKFILL	CU YD	496
21001000	GEOTECHNICAL FABRIC FOR GROUND STABILIZATION	SQ YD	1063
* 21101615	TOPSOIL FURNISH AND PLACE, 4"	SQ YD	233
* 21101665	TOPSOIL FURNISH AND PLACE, 18"	SQ YD	112
* 25000400	NITROGEN FERTILIZER NUTRIENTS	POUND	7
* 25000500	PHOSPHORUS FERTILIZER NUTRIENTS	POUND	7
* 25000600	POTASSIUM FERTILIZER NUTRIENTS	POUND	7
* 25200110	SODDING, SALT TOLERANT	SQ YD	345
* 25200200	SUPPLEMENTAL WATERING	UNIT	7
28000400	PERIMETER EROSION BARRIER	FOOT	148
28000510	INLET FILTERS	EACH	7
31100300	SUB-BASE GRANULAR MATERIAL, TYPE A 4"	SQ YD	1445
40201000	AGGREGATE FOR TEMPORARY ACCESS	TON	15
42000200	PORTLAND CEMENT CONCRETE PAVEMENT 7"	SQ YD	1438
42001300	PROTECTIVE COAT	SQ YD	1573
42400400	PORTLAND CEMENT CONCRETE SIDEWALK 7 INCH	SQ FT	210
42400800	DETECTABLE WARNINGS	SQ FT	26
44000200	DRIVEWAY PAVEMENT REMOVAL	SQ YD	105
44000600	SIDEWALK REMOVAL	SQ FT	409
44001700	COMBINATION CONCRETE CURB AND GUTTER REMOVAL AND REPLACEMENT	FOOT	64
550A2420	STORM SEWERS, RUBBER GASKET, CLASS A, TYPE 1 48"	FOOT	516
60107600	PIPE UNDERDRAINS 4"	FOOT	134
60221100	MANHOLES, TYPE A, 5'-DIAMETER, TYPE 1 FRAME, CLOSED LID	EACH	1
60243800	INLET, SPECIAL, WITH TYPE 1 FRAME, OPEN LID	EACH	3
60600605	CONCRETE CURB TYPE B	FOOT	152

ITEM CODE NUMBER	ITEM DESCRIPTION	UNIT	TOTAL QUANTITY
			J000
60603800	COMBINATION CONCRETE CURB AND GUTTER, TYPE B-6.12	FOOT	330
61141600	STORM SEWERS, SPECIAL 48"	FOOT	44
67100100	MOBILIZATION	L SUM	1
70102620	TRAFFIC CONTROL AND PROTECTION STANDARD 701501	L SUM	1
70102640	TRAFFIC CONTROL AND PROTECTION STANDARD 701801	L SUM	1
* 78008200	POLYUREA PAVEMENT MARKING TYPE I - LETTERS AND SYMBOLS	SQ FT	23
* 78008210	POLYUREA PAVEMENT MARKING TYPE I - LINE 4"	FOOT	635
* 81000500	CONDUIT IN TRENCH, 1 1/2" DIA, GALVANIZED STEEL	FOOT	71
* 81603000	UNIT DUCT, 600V, 2-1C NO. 8, 1/C NO. 8 GROUND, (XLP-TYPE USE), 3/4" DIA. POLYETHYLENE	FOOT	120
* 81900200	TRENCH AND BACKFILL FOR ELECTRICAL WORK	FOOT	120
* 83600200	LIGHT POLE FOUNDATION, 24" DIAMETER	FOOT	16
* A2000118	TREE, ACER X FREEMANII AUTUMN BLAZE (AUTUMN BLAZE FREEMAN MAPLE), 3" CALIPER, BALLED AND BURLAPPED	EACH	2
* B2005720	TREE, PYRUS CALLERYANA CHANTICLEER (CHANTICLEER CALLERY PEAR), 2 1/2" CALIPER, TREE FORM, BALLED AND BURLAPPED	EACH	3
* E2024001	VINE-POLYGONUM REYNOUTRIA (DWARF FLEECE FLOWER), 1-QUART POT	EACH	115
* K0030450	PERENNIAL PLANTS, DAFFODIL BULBS	UNIT	7.6
XX000882	WOOD FENCE	FOOT	212
* XX001136	LIGHT POLE, SPECIAL	EACH	1
XX001249	ORNAMENTAL FENCE	FOOT	62
XX003360	STORM SEWERS PVC (SDR 26), 12"	FOOT	32
* XX004051	LIGHT POLE, ORNAMENTAL	EACH	1
* XX005178	HEMEROCALLIS 'CHICAGO APACHE' DAYLILY	EACH	96
XX005656	INLET FILTER CLEANING	EACH	21
* XX006002	GRASSES, PENSITUM ALOPECUROIDES 'HAMELN' (HAMELN DWARF FOUNTAIN GRASS) 3 GAL.	EACH	28
* XX006105	HEMEROCALLIS HAPPY RETURNS (HAPPY RETURNS DAYLILY) 1 GALLON	EACH	96
* XX006937	GROUND ROD, 5/8" DIA., X 10 FT	EACH	2
Z0007601	BUILDING REMOVAL NO. 1	L SUM	1
Z0007602	BUILDING REMOVAL NO. 2	L SUM	1
Z0007603	BUILDING REMOVAL NO. 3	L SUM	1

* DENOTES SPECIALTY ITEM

REVISIONS	
NAME	DATE

ILLINOIS DEPARTMENT OF TRANSPORTATION
F.A.U. ROUTE 2689
WOLF ROAD COMMUTER PARKING FACILITY EXPANSION

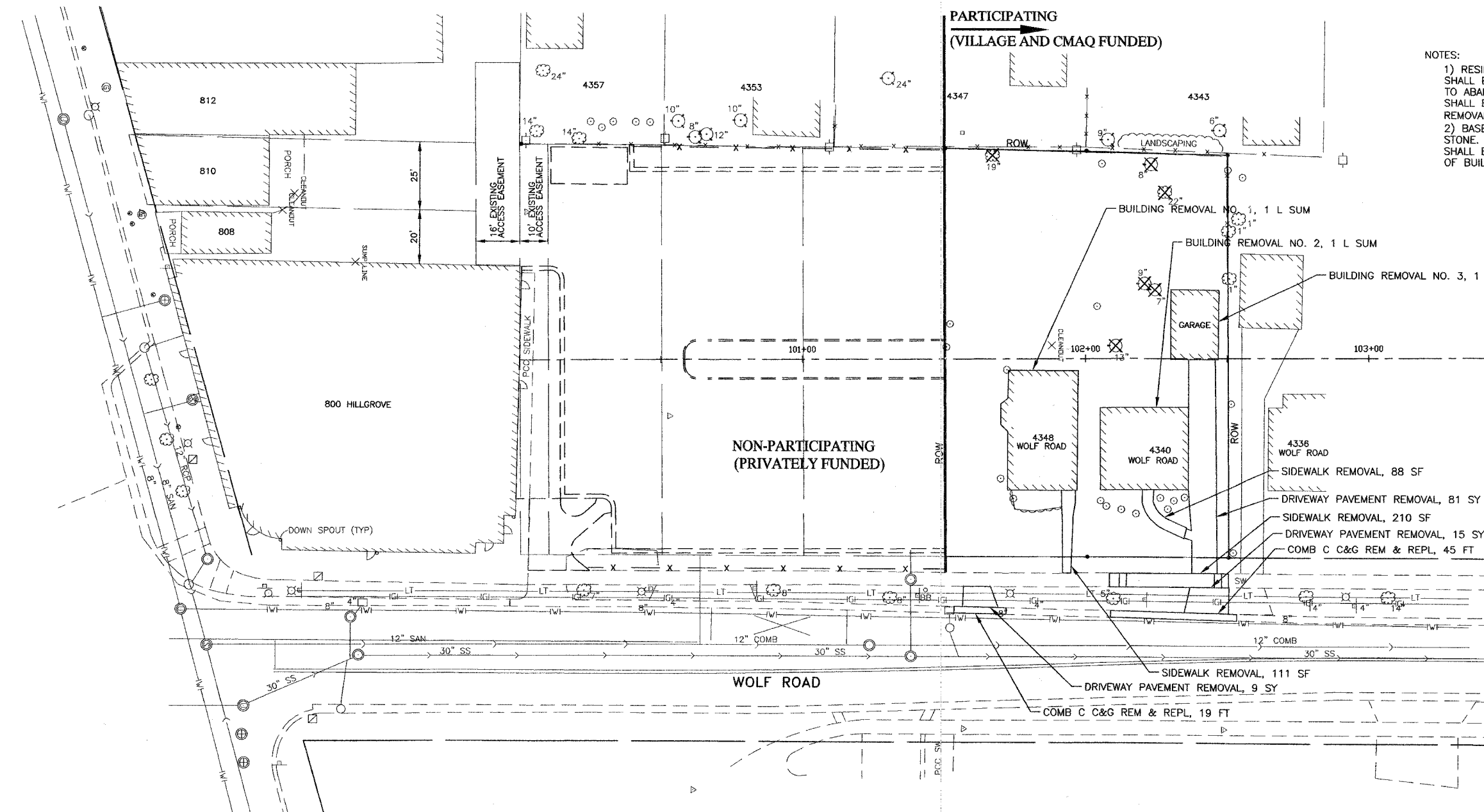
SUMMARY OF QUANTITIES

JJB
JAMES J. BENES & ASSOCIATES, INC.
950 Warrenville Road, Suite 101, Lisle, Illinois 60532
Tel. (630) 719-7570 • Fax (630) 719-7589

SCALE: NTS
DATE:

DRAWN BY: BCD
CHECKED BY: JDM

F.A.U. RTE.	SECTION	COUNTY	TOTAL SHEETS	SHEET NO.
2689	06-00087-00-PK	COOK	18	5
STA.		TO STA.		
ILLINOIS FED. AID PROJECT				
CONTRACT NO. 83057				



- NOTES:
- 1) RESIDENTIAL SANITARY AND WATER SERVICES SHALL BE CUT AND CAPPED AT R.O.W. THE WORK TO ABANDON SANITARY AND WATER SERVICES SHALL BE INCLUDED IN THE COST OF BUILDING REMOVAL (L SUM).
 - 2) BASEMENTS SHALL BE BACKFILLED WITH CA-7 STONE. BACKFILLING OF BUILDING BASEMENTS SHALL BE CONSIDERED AS INCLUDED IN THE COST OF BUILDING REMOVAL.

JJB JAMES J. BENES & ASSOCIATES, INC.
 950 Warrenville Road, Suite 101, Lisle, Illinois 60532
 Tel. (630) 719-7570 · Fax (630) 719-7589

REVISIONS	
NAME	DATE

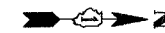
ILLINOIS DEPARTMENT OF TRANSPORTATION
 F.A.U. ROUTE 2689
 WOLF ROAD COMMUTER PARKING FACILITY EXPANSION

REMOVAL PLAN

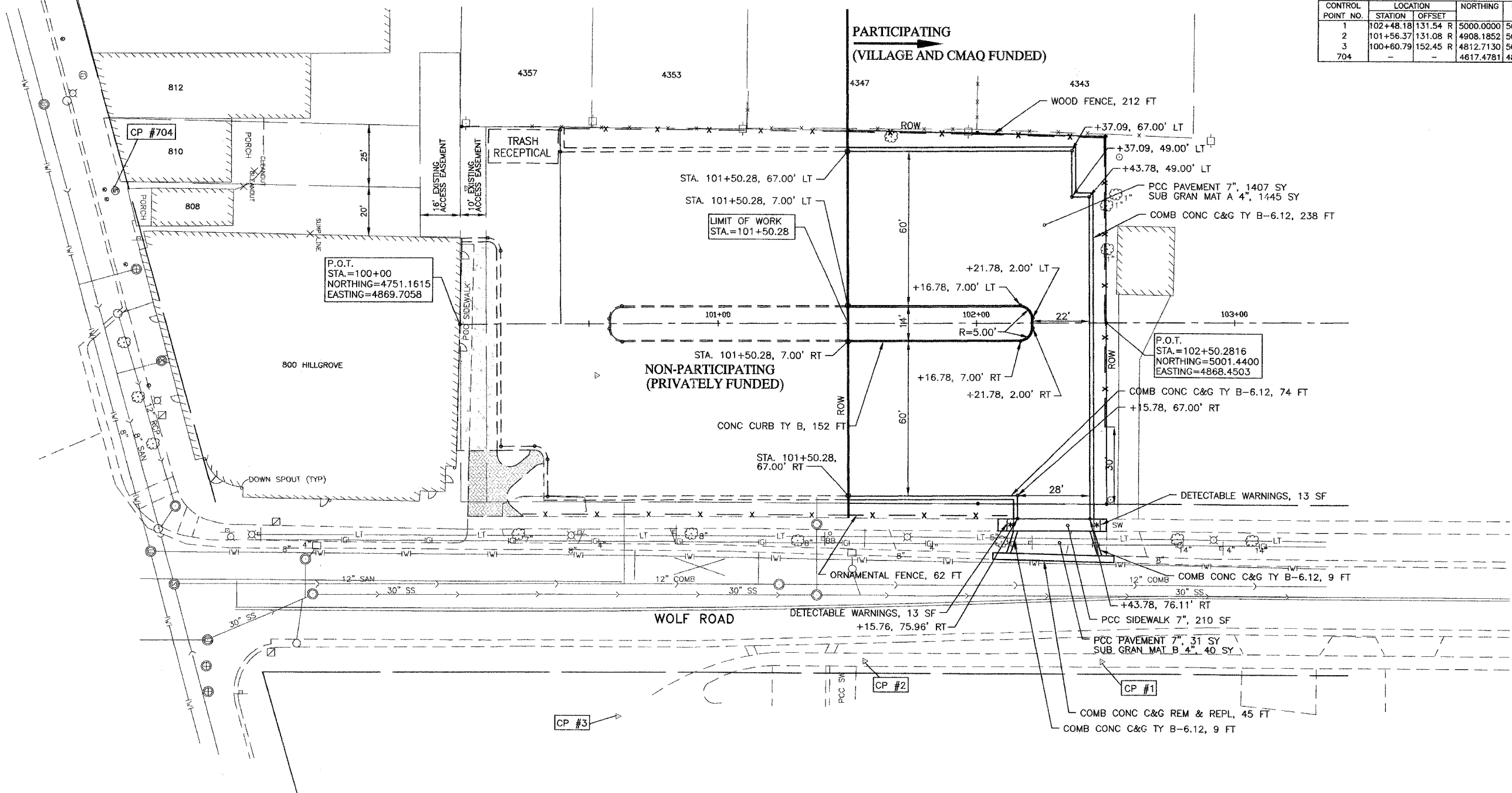
SCALE: 1"=20'
 DATE: _____

DRAWN BY: BCD
 CHECKED BY: JDS

F.A.U. RTE.	SECTION	COUNTY	TOTAL SHEETS	SHEET NO.
2689	06-00087-00-PK	COOK	18	6
STA.		TO STA.		
ILLINOIS FED. AID PROJECT				
CONTRACT NO. 63057				



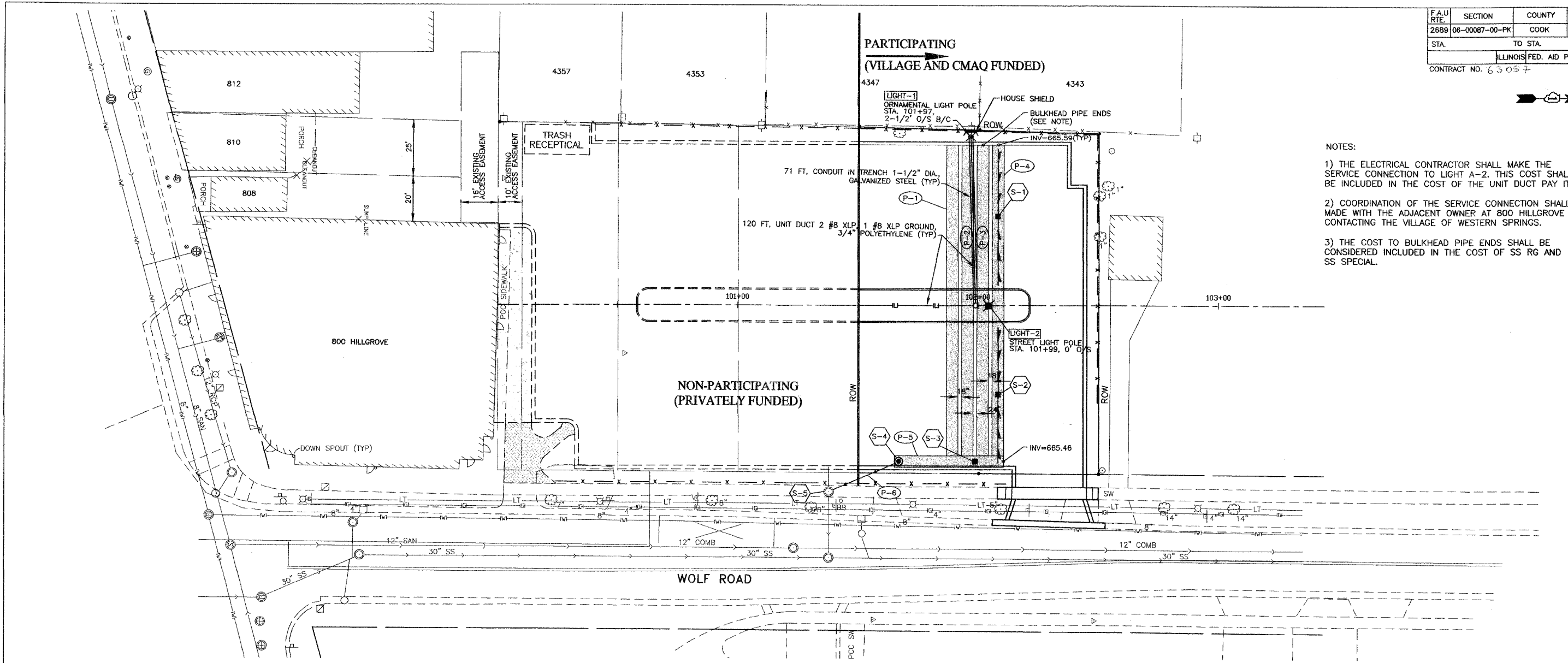
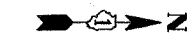
CONTROL POINT NO.	LOCATION		NORTHING	EASTING	ELEVATION	DESCRIPTION
	STATION	OFFSET				
1	102+48.18	131.54 R	5000.0000	5000.0000	672.81	CUT CROSS
2	101+56.37	131.08 R	4908.1852	5000.0000	673.89	CUT CROSS
3	100+60.79	152.45 R	4812.7130	5021.8502	675.85	CUT CROSS
704	-	-	4617.4781	4817.1233	676.32	CUT CROSS



REVISIONS		ILLINOIS DEPARTMENT OF TRANSPORTATION F.A.U. ROUTE 2689 WOLF ROAD COMMUTER PARKING FACILITY EXPANSION
NAME	DATE	
		GEOMETRIC PLAN

JJB JAMES J. BENES & ASSOCIATES, INC.
 950 Warrenville Road, Suite 101, Lisle, Illinois 60532
 Tel. (630) 719-7570 - Fax (630) 719-7589

SCALE: 1"=20'
 DATE: _____
 DRAWN BY: BCD
 CHECKED BY: JDS



- NOTES:
- 1) THE ELECTRICAL CONTRACTOR SHALL MAKE THE SERVICE CONNECTION TO LIGHT A-2. THIS COST SHALL BE INCLUDED IN THE COST OF THE UNIT DUCT PAY ITEM.
 - 2) COORDINATION OF THE SERVICE CONNECTION SHALL BE MADE WITH THE ADJACENT OWNER AT 800 HILLGROVE BY CONTACTING THE VILLAGE OF WESTERN SPRINGS.
 - 3) THE COST TO BULKHEAD PIPE ENDS SHALL BE CONSIDERED INCLUDED IN THE COST OF SS RG AND SS SPECIAL.

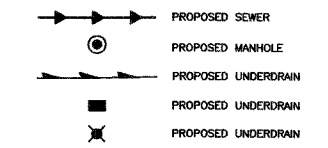
STORM SEWER STRUCTURES

STRUCT. NO.	STATION	OFFSET	STRUCTURE TYPE	RIM	INVERT			
					NORTH	SOUTH	EAST	WEST
S-1	102+09	37 LT	INLETS SPL T1F OL	670.90	-	-	665.56	665.56
S-2	102+08	37 RT	INLETS SPL T1F OL	671.50	-	-	665.49	665.49
S-3	101+99	65 RT	INLETS SPL T1F OL	672.30	665.46	665.46	-	-
S-4	101+67	65 RT	MAN TA 5 DIA T1F CL	672.48	665.46	665.46	-	-
S-5	101+38	78 RT	EXISTING STRUCTURE	673.64	665.46 (NW)	-	665.36	665.46

STORM SEWERS

PIPE NO.	LENGTH (FOOT)	MATERIAL	TYPE	DIA. (IN.)	SLOPE %	TBF (CU. YD.)
P-1	129	SS RG CL A	1	48	0.10	102.5
P-2	129	SS RG CL A	1	48	0.10	102.5
P-3	129	SS RG CL A	1	48	0.10	102.5
P-4	129	SS RG CL A	1	48	0.10	102.5
P-5	44	SS SPECIAL	1	48	0.00	47.6
P-6	32	SS PVC SDR 26	-	12	0.00	20.0

LEGEND



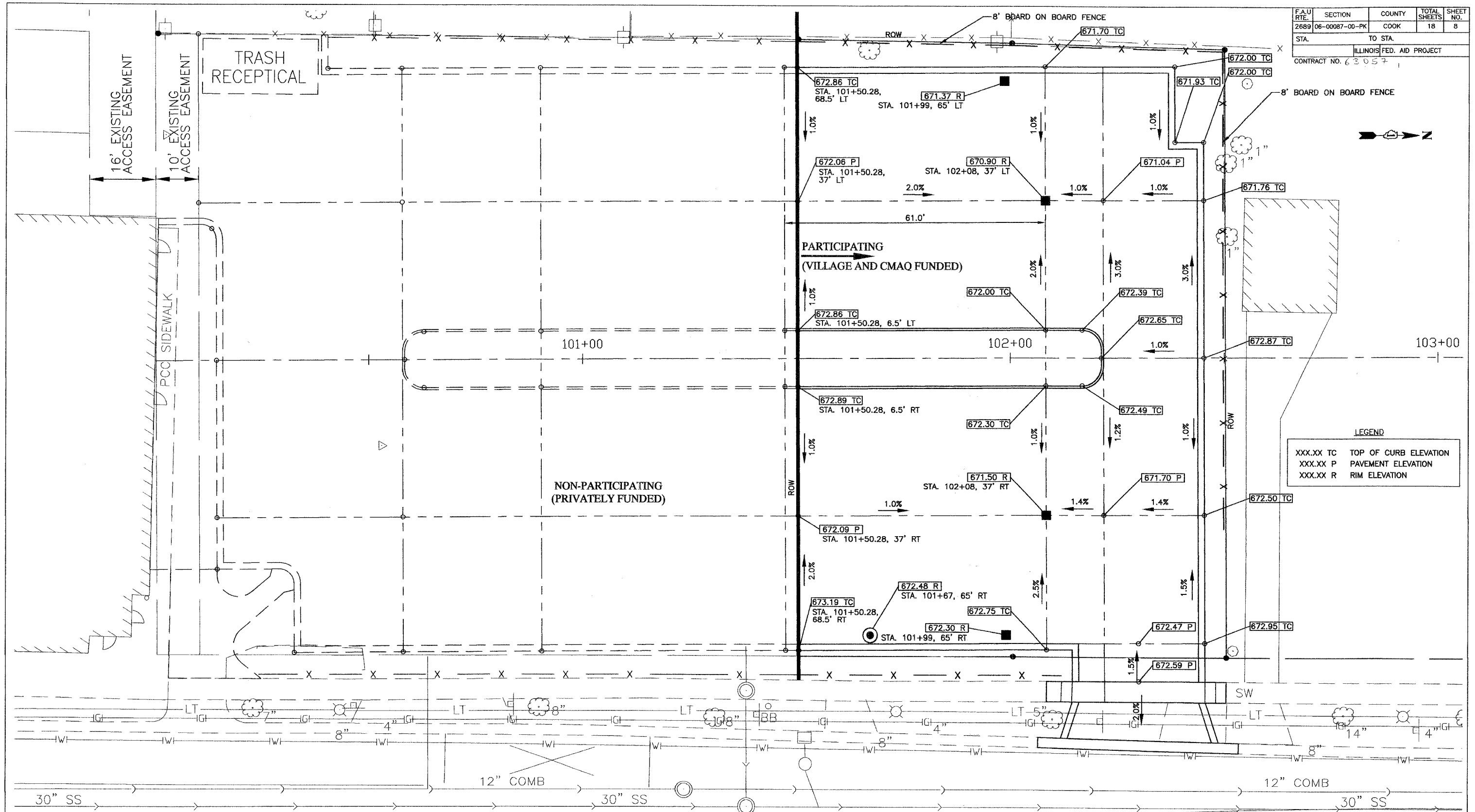
REVISIONS	
NAME	DATE

ILLINOIS DEPARTMENT OF TRANSPORTATION
 F.A.U. ROUTE 2689
 WOLF ROAD COMMUTER PARKING FACILITY EXPANSION
 DRAINAGE AND UTILITY PLAN

JJB JAMES J. BENES & ASSOCIATES, INC.
 950 Warrenville Road, Suite 101, Lisle, Illinois 60532
 Tel. (630) 719-7570 · Fax (630) 719-7589

SCALE: 1"=20'
 DATE: _____ DRAWN BY: BCD
 CHECKED BY: JDS

F.A.U. RTE.	SECTION	COUNTY	TOTAL SHEETS	SHEET NO.
2689	06-0007-00-PK	COOK	18	8
STA.		TO STA.		
ILLINOIS FED. AID PROJECT				
CONTRACT NO. 63057				



LEGEND

XXX.XX TC	TOP OF CURB ELEVATION
XXX.XX P	PAVEMENT ELEVATION
XXX.XX R	RIM ELEVATION

WOLF ROAD

REVISIONS	
NAME	DATE

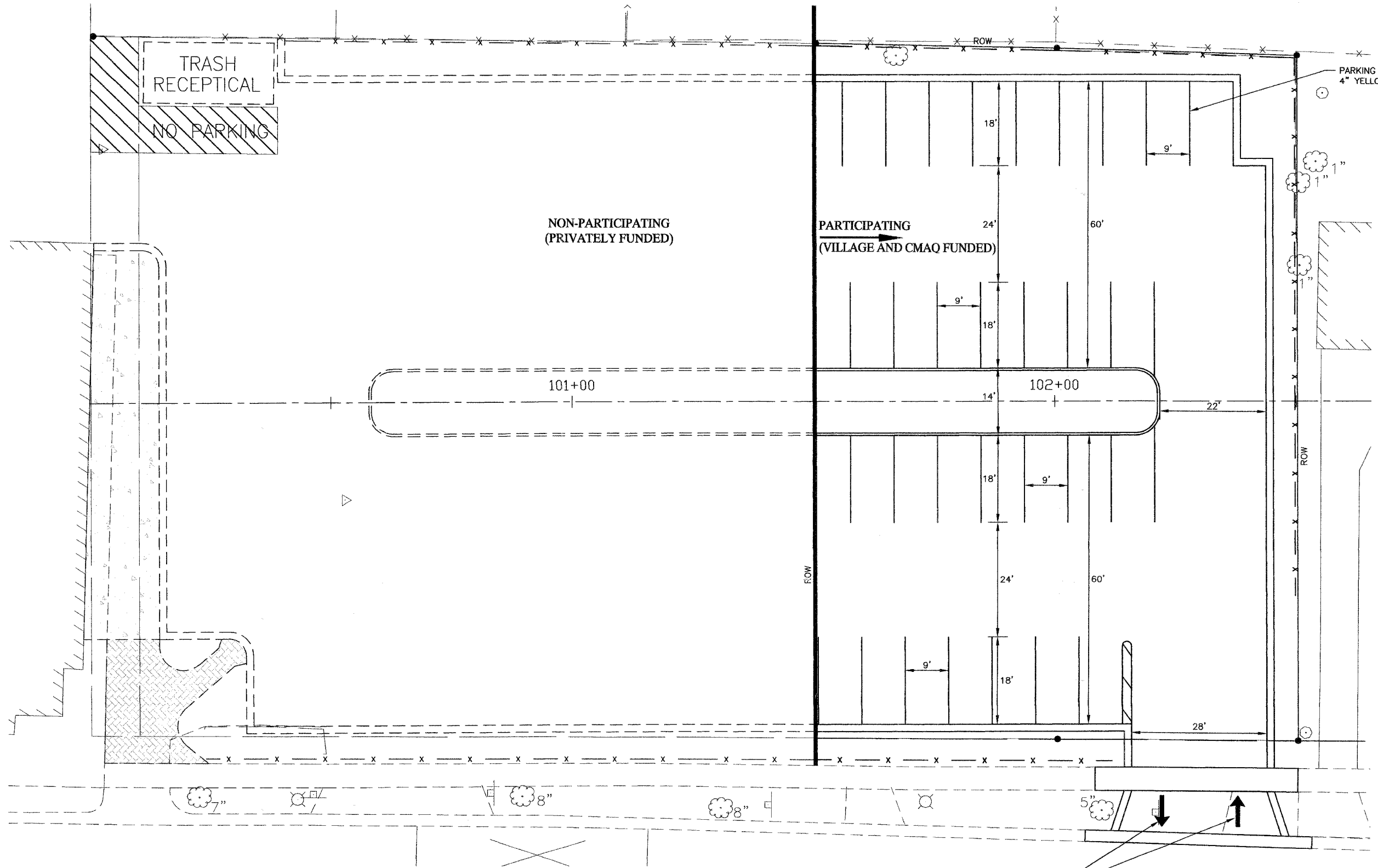
ILLINOIS DEPARTMENT OF TRANSPORTATION
F.A.U. ROUTE 2689
WOLF ROAD COMMUTER PARKING FACILITY EXPANSION

GRADING PLAN

JJB JAMES J. BENES & ASSOCIATES, INC.
950 Warrenville Road, Suite 101, Lisle, Illinois 60532
Tel. (630) 719-7570 · Fax (630) 719-7589

SCALE: 1"=10'
DATE: _____
DRAWN BY: BCD
CHECKED BY: JDS

F.A.U. RTE.	SECTION	COUNTY	TOTAL SHEETS	SHEET NO.
2689	06-00087-00-PK	COOK	18	9
STA.	TO STA.		ILLINOIS FED. AID PROJECT	
			CONTRACT NO. 63057	



LETTERS & SYMBOLS
WHITE - 23 SQ FT

REVISIONS	
NAME	DATE

ILLINOIS DEPARTMENT OF TRANSPORTATION
F.A.U. ROUTE 2689
WOLF ROAD COMMUTER PARKING FACILITY EXPANSION

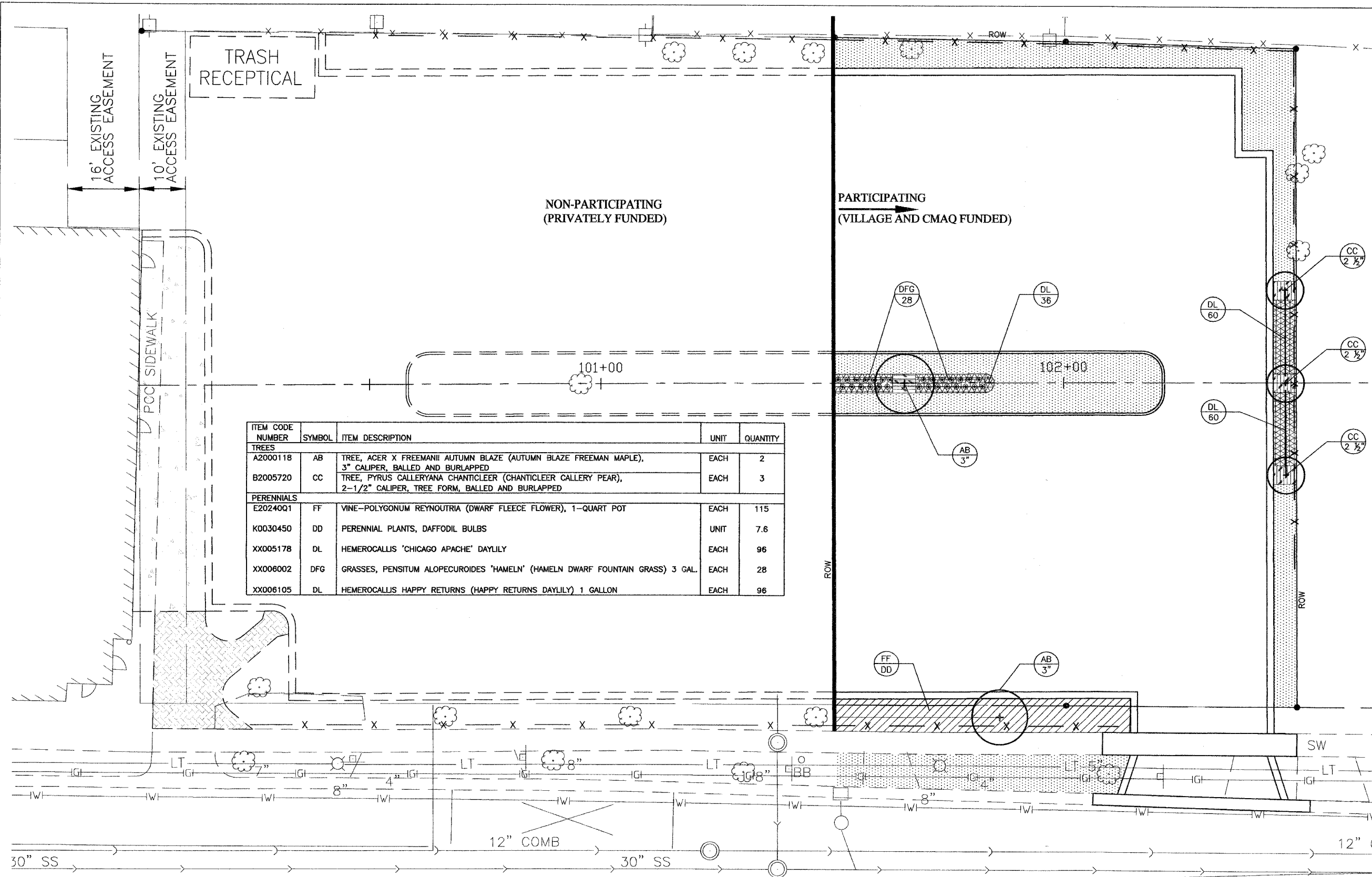
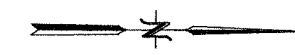
STRIPING PLAN

SCALE: 1"=10'
DATE:

DRAWN BY: BCD
CHECKED BY: JDS

JJB JAMES J. BENES & ASSOCIATES, INC.
950 Warrenville Road, Suite 101, Lisle, Illinois 60532
Tel. (630) 719-7570 · Fax (630) 719-7589

F.A.U. RTE.	SECTION	COUNTY	TOTAL SHEETS	SHEET NO.
2689	05-00087-00-PK	COOK	18	10
STA.	TO STA.		ILLINOIS FED. AID PROJECT	
			CONTRACT NO. 63057	



ITEM CODE NUMBER	SYMBOL	ITEM DESCRIPTION	UNIT	QUANTITY
TREES				
A2000118	AB	TREE, ACER X FREEMANII AUTUMN BLAZE (AUTUMN BLAZE FREEMAN MAPLE), 3" CALIPER, BALLED AND BURLAPPED	EACH	2
B2005720	CC	TREE, PYRUS CALLERYANA CHANTICLEER (CHANTICLEER CALLERY PEAR), 2-1/2" CALIPER, TREE FORM, BALLED AND BURLAPPED	EACH	3
PERENNIALS				
E20240Q1	FF	VINE-POLYGONUM REYNOUTRIA (DWARF FLEECE FLOWER), 1-QUART POT	EACH	115
K0030450	DD	PERENNIAL PLANTS, DAFFODIL BULBS	UNIT	7.6
XX005178	DL	HEMEROCALLIS 'CHICAGO APACHE' DAYLILY	EACH	96
XX006002	DFG	GRASSES, PENSITUM ALOPECUROIDES 'HAMELN' (HAMELN DWARF FOUNTAIN GRASS) 3 GAL.	EACH	28
XX006105	DL	HEMEROCALLIS HAPPY RETURNS (HAPPY RETURNS DAYLILY) 1 GALLON	EACH	96

LEGEND

	SOD
	MULCH

REVISIONS	
NAME	DATE

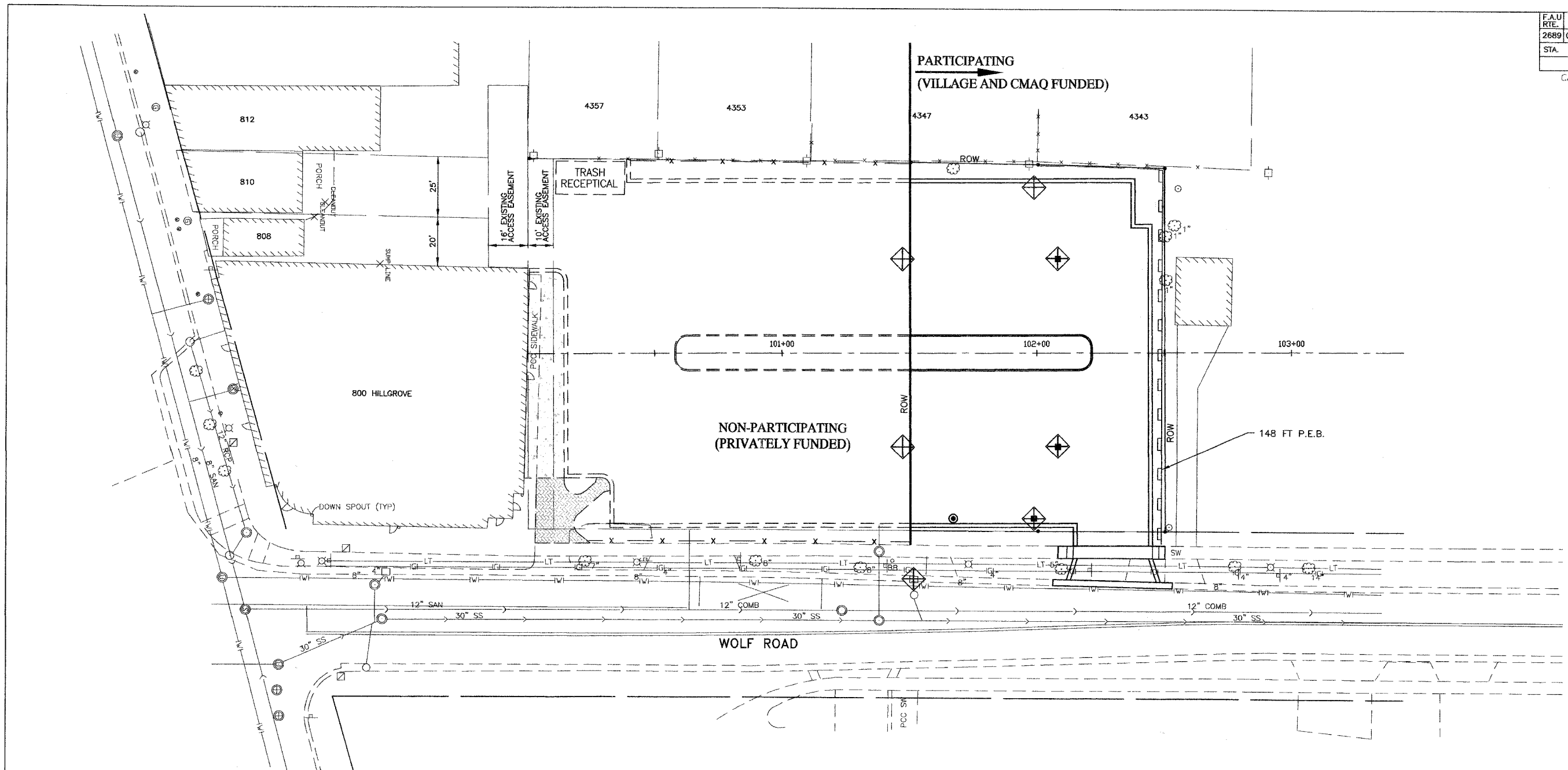
ILLINOIS DEPARTMENT OF TRANSPORTATION
 F.A.U. ROUTE 2689
 WOLF ROAD COMMUTER PARKING FACILITY EXPANSION

LANDSCAPE PLAN

JJB JAMES J. BENES & ASSOCIATES, INC.
 950 Warrenville Road, Suite 101, Lisle, Illinois 60532
 Tel. (630) 719-7570 - Fax (630) 719-7589

SCALE: 1"=10'
 DATE: _____
 DRAWN BY: BCD
 CHECKED BY: JDS

F.A.U. RTE.	SECTION	COUNTY	TOTAL SHEETS	SHEET NO.
2689	06-00087-00-PK	COOK	18	11
STA.		TO STA.		
ILLINOIS FED. AID PROJECT				
Contract No. 63057				



TEMPORARY EROSION CONTROL NOTES

1. SEDIMENT AND EROSION CONTROL DEVICES SHALL BE FUNCTIONAL BEFORE LAND IS OTHERWISE DISTURBED ON THE SITE.
2. THE SURFACE OF STRIPPED AREAS SHALL BE PERMANENTLY OR TEMPORARILY PROTECTED FROM SOIL EROSION WITHIN 15 DAYS AFTER FINAL GRADE IS REACHED. STRIPPED AREAS NOT AT FINAL GRADE THAT WILL REMAIN UNDISTURBED FOR MORE THAN 15 DAYS AFTER INITIAL DISTURBANCE SHALL BE PROTECTED FROM EROSION.
3. IF A STOCKPILE IS TO REMAIN IN PLACE FOR MORE THAN 3 DAYS, THEN SEDIMENT AND EROSION CONTROL DEVICES SHALL BE INSTALLED DURING CONSTRUCTION.
4. STORM SEWER INLETS SHALL BE PROTECTED WITH SEDIMENT TRAPPING OR FILTER CONTROL DEVICES DURING CONSTRUCTION.
5. THE QUANTITIES SHOWN FOR INLET & PIPE PROTECTION AND TEMPORARY DITCH CHECKS ARE SUFFICIENT FOR ONE (1) SETUP AND THREE (3) REPLACEMENTS.
6. THE CONTRACTOR SHALL MAINTAIN ALL EROSION CONTROL MEASURES IN SERVICEABLE CONDITION AT ALL TIMES. EROSION CONTROL MEASURES WILL BE INSPECTED WITHIN 24 HOURS OF ANY STORM EXCEEDING 0.5 INCHES OF PRECIPITATION.
7. ALL CONSTRUCTION ACTIVITIES SHALL BE IN ACCORDANCE WITH THE NATIONAL POLLUTANT DISCHARGE ELIMINATION SYSTEM STORM WATER PERMIT FOR THIS PROJECT.
8. AS WORK PROGRESSES, ALL SLOPES STEEPER THAN 3:1 SHALL RECEIVE TEMPORARY EROSION CONTROL SEEDING AND EROSION CONTROL BLANKET IMMEDIATELY. ALL FLATTER AREAS THAT DO NOT HAVE A COVER OF VEGETATION, AND WHERE NO FURTHER WORK IS TO OCCUR FOR ONE MONTH OR MORE, SHALL BE TEMPORARILY SEEDED WITHIN SEVEN (7) CALENDAR DAYS UNLESS OTHERWISE DIRECTED BY THE ENGINEER. A SUFFICIENT QUANTITY OF TEMPORARY EROSION CONTROL SEEDING IS INCLUDED TO COVER THE LIMITS OF PERMANENT LANDSCAPING.
9. TEMPORARY DITCH CHECKS SHALL BE PLACED IMMEDIATELY AFTER DITCH GRADING (OR CLEANING AND REGRADING) IS COMPLETED.
10. ALL PROPOSED OPEN LID DRAINAGE STRUCTURES SHALL HAVE INLET PROTECTION AS DIRECTED BY THE ENGINEER WITH INLET FILTERS, AND THIS WORK SHALL BE PAID FOR AT THE CONTRACT UNIT PRICE PER EACH FOR "INLET FILTERS".
11. WATER PUMPED OR OTHERWISE DISCHARGED FROM THE SITE DURING CONSTRUCTION DEWATERING SHALL BE FILTERED.
12. ANY SOIL, MUD OR DEBRIS WASHED, TRACKED, OR DEPOSITED ONTO THE STREET SHALL BE REMOVED PRIOR TO THE END OF THE WORK DAY.

LEGEND

	PERIMETER EROSION BARRIER (P.E.B.)
	INLET FILTERS
	DRAINAGE STRUCTURES

REVISIONS	
NAME	DATE

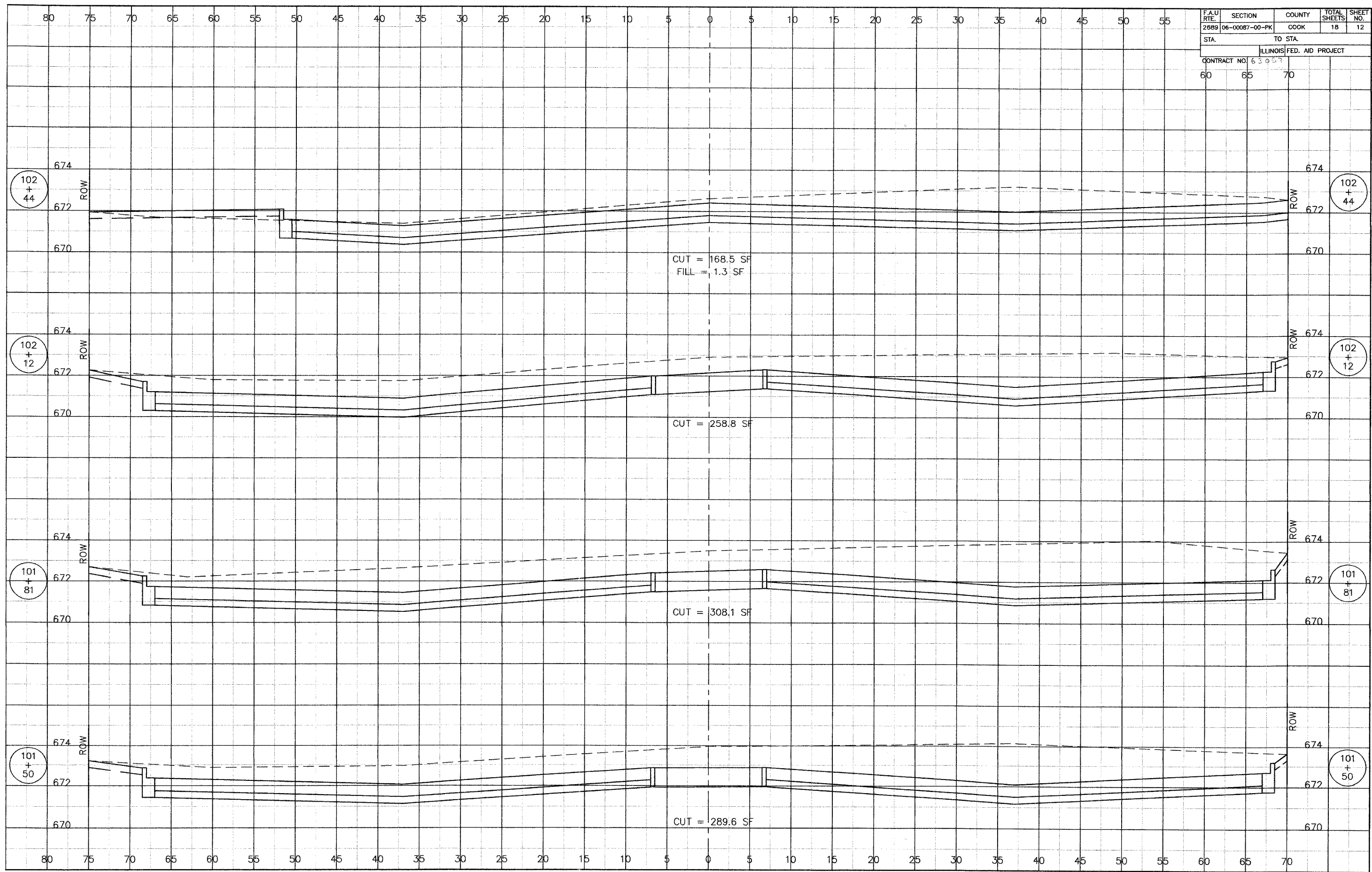
ILLINOIS DEPARTMENT OF TRANSPORTATION
F.A.U. ROUTES

EROSION CONTROL PLAN

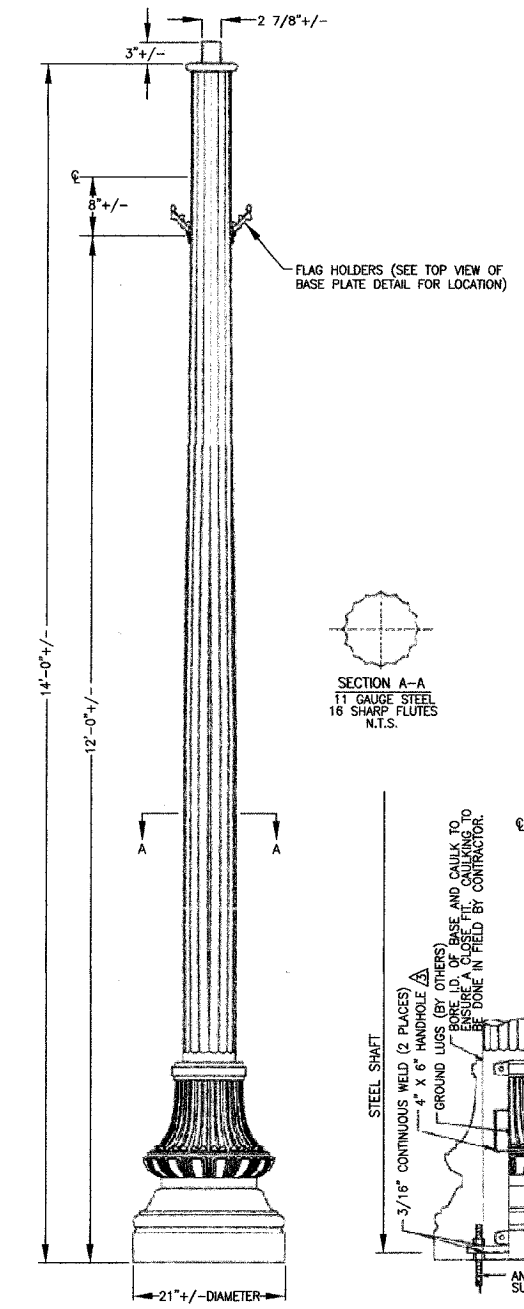
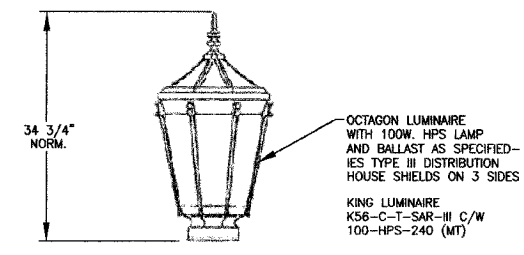
JJB
JAMES J. BENES & ASSOCIATES, INC.
 950 Warrenville Road, Suite 101, Lisle, Illinois 60532
 Tel. (630) 719-7570 · Fax (630) 719-7589

SCALE: 1"=20'
 DATE: 03/13/08
 DRAWN BY: BCD
 CHECKED BY: JDS

F.A.U. RTE.	SECTION	COUNTY	TOTAL SHEETS	SHEET NO.
2889	06-0087-00-PK	COOK	18	12
STA.		TO STA.		
ILLINOIS FED. AID PROJECT				
CONTRACT NO. 63059				
60	65	70		



F.A.U. RTE.	SECTION	COUNTY	TOTAL SHEETS	SHEET NO.
2689	06-00087-00-PK	COOK	18	14
STA.		TO STA.		
ILLINOIS FED. AID PROJECT				
CONTRACT NO. 63057				



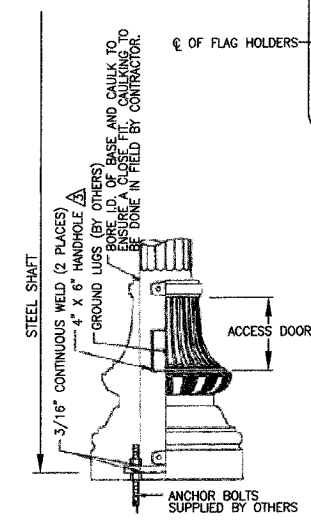
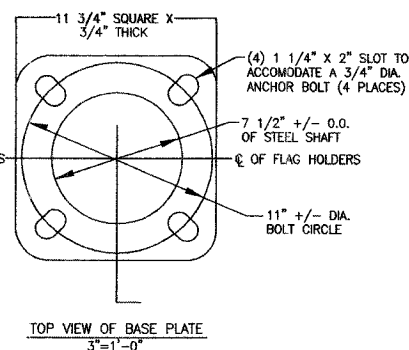
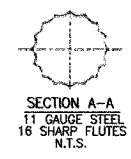
LAMP POST SPECIFICATIONS

STYLE: WASHINGTON STEEL
 HEIGHT: 14'-0" +/-
 BASE: 21" +/- DIAMETER
 MATERIAL: 11 GAUGE, 16 SHARP FLUTES STEEL MONOTUBE CONSTRUCTION EITHER 1 PIECE, (SLIP OVER) OR 2 PIECE, (WRAP AROUND). EITHER HEAVY WALL CAST IRON PER A.S.T.M. A 48-83 CLASS 30 OR HEAVY WALL CAST DUCTILE IRON PER A.S.T.M. A-536-84 GRADE 65-45-12 (PLEASE SEE QUANTITY)
 FINISH: FINISH PAINT-FLAT BLACK (SEE PAINT NOTE BELOW)
 ACCESS DOOR: LOCATED IN BASE TO COINCIDE WITH HAND HOLE IN STEEL SHAFT SECURED WITH TAMPER PROOF HEX SOCKET SECURITY MACHINE SCREWS
 GROUND STUD PROVISIONS: 1/2"-13 SQUARE NUT WELDED TO INSIDE WALL OF SHAFT OPPOSITE HAND HOLE TO ACCOMMODATE GROUND STUD (STUD PROVIDED BY OTHERS)
 ANCHOR BOLTS: (4) 1" X 30" + 4" HOOK (FULLY GALVANIZED WITH 2 GALVANIZED NUTS AND 2 GALVANIZED WASHERS PER BOLT) 5" REQUIRED
 BOLT PROJECTION: 2 7/8" DIA. X 3" HIGH (ABOVE DONUT)
 TENON:

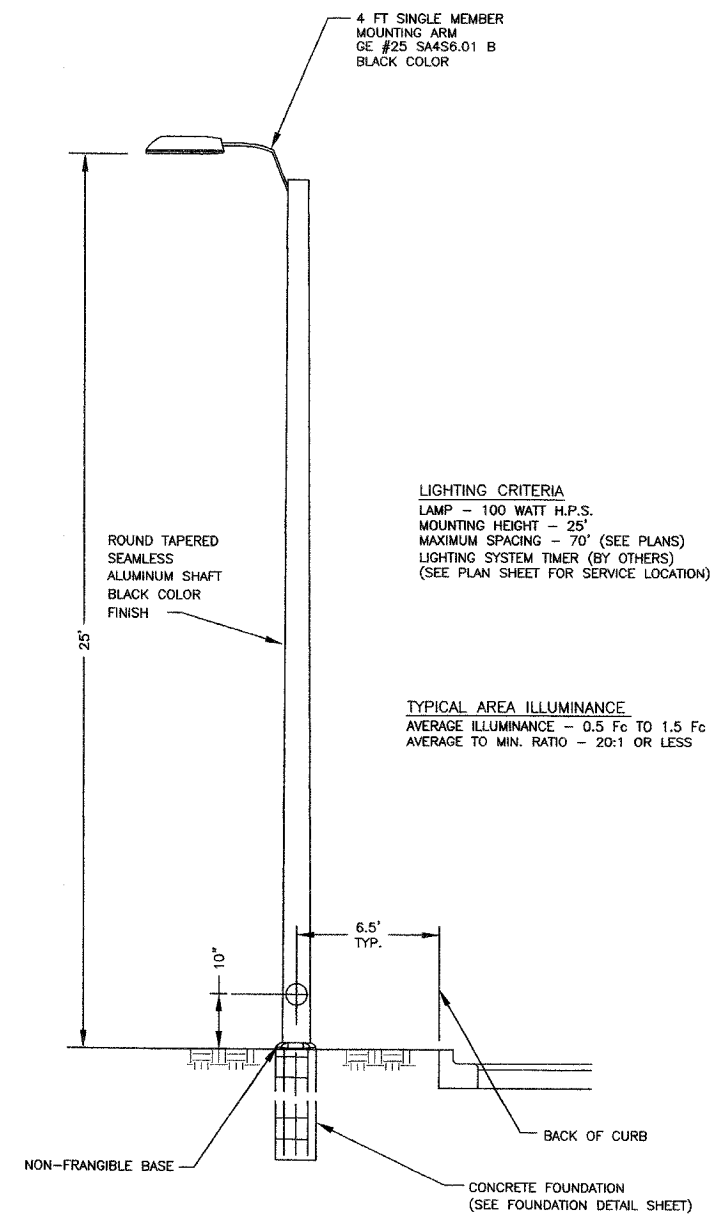
PAINT NOTE: THE PURCHASER AND OR CONTRACTOR RELEASES SPRING CITY FROM ANY GUARANTEES REGARDING THE FINAL CONDITION OF THE FINISH PAINT ON THE COMPONENTS WHEN THEY ARE RECEIVED AT THE JOB SITE. SPRING CITY WILL FURNISH TOUCH UP PAINT FOR TOUCH UP PURPOSES AFTER INSTALLATION BY CONTRACTOR.

QUANTITY REQUIREMENTS

58 (TYPE "A")-19 (TYPE "C") ASSEMBLIES REQUIRED PER WESCO-PO#: D/S 5104-776523 - SO#: 89-474
 BASE MATERIAL: CAST IRON, 1 PIECE (SLIP OVER) - DUPLEX RECEPTACLE COVER FINISH PAINTED FLAT BLACK - COVER REQUIRED ONLY
 2 ASSEMBLIES REQUIRED PER M-J ELECTRICAL SUPPLY PO#: D009254 - SO#: 93-548 - BASE MATERIAL: CAST DUCTILE IRON, 2 PIECE (WRAP AROUND) - DUPLEX RECEPTACLE COVER FINISH PAINTED FLAT BLACK - COVER AND RECEPTACLE REQUIRED.



LIGHT POLE, ORNAMENTAL



LIGHTING CRITERIA

LAMP - 100 WATT H.P.S.
 MOUNTING HEIGHT - 25'
 MAXIMUM SPACING - 70' (SEE PLANS)
 LIGHTING SYSTEM TIMER (BY OTHERS)
 (SEE PLAN SHEET FOR SERVICE LOCATION)

TYPICAL AREA ILLUMINANCE

AVERAGE ILLUMINANCE - 0.5 Fc TO 1.5 Fc
 AVERAGE TO MIN. RATIO - 20:1 OR LESS

LIGHT POLE, SPECIAL

JJB JAMES J. BENES & ASSOCIATES, INC.
 950 Warrenville Road, Suite 101, Lisle, Illinois 60532
 Tel. (630) 719-7570 - Fax (630) 719-7589

REVISIONS	
NAME	DATE

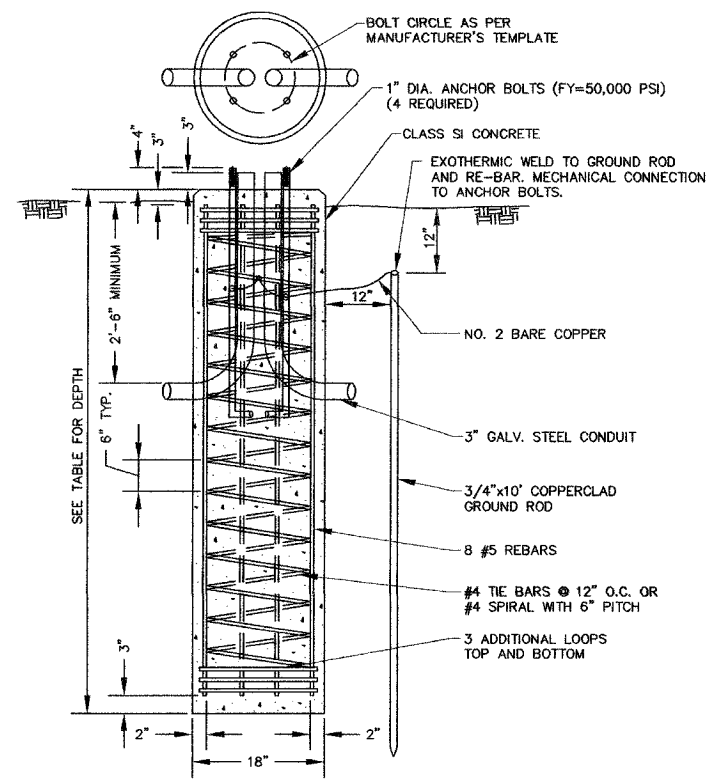
ILLINOIS DEPARTMENT OF TRANSPORTATION
 F.A.U. ROUTE 2689
 WOLF ROAD COMMUTER PARKING FACILITY EXPANSION

LIGHTING DETAILS

SCALE: 1"=20'
 DATE: DRAWN BY: BCD
 CHECKED BY: JDM

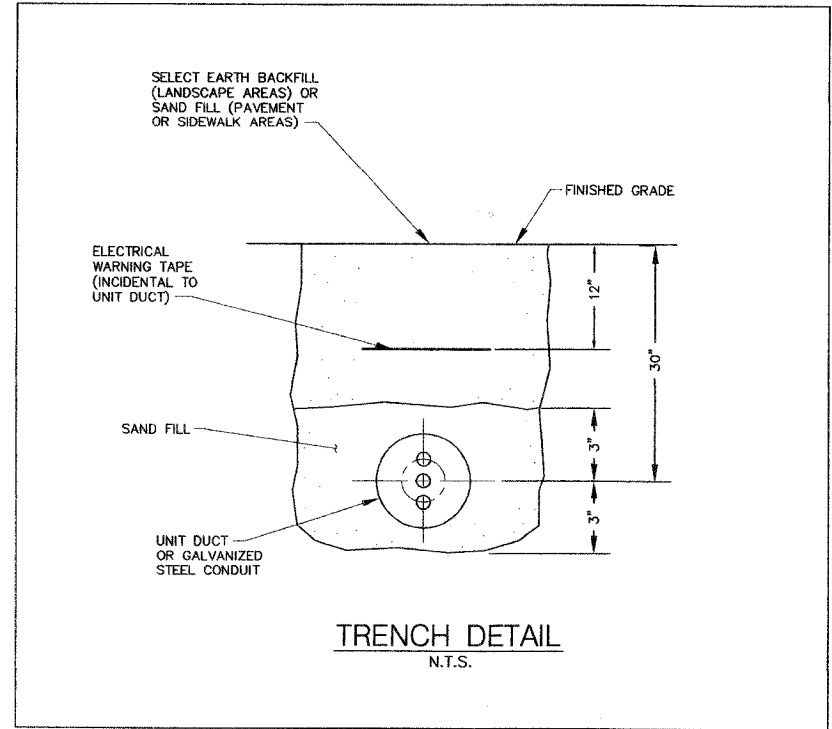
F.A.U. RTE.	SECTION	COUNTY	TOTAL SHEETS	SHEET NO.
2689	06-00087-00-PK	COOK	18	15
STA.		TO STA.		
		ILLINOIS FED. AID PROJECT		
CONTRACT NO. 63067				

FOUNDATION SCHEDULE		
TYPE OF SOILS		
DESCRIPTION	STANDARDS	EMBEDMENT
SOFT CLAY	Qu = 0.25 to 0.50 tons/sq ft	9' - 8"
MEDIUM CLAY	Qu = 0.50 to 1.00 tons/sq ft	7' - 0"
DENSE CLAY	Qu = 1.00 to 2.00 tons/sq ft	6' - 0"
LOOSE SAND	N = 4 TO 10	7' - 8"
MEDIUM SAND	N = 10 TO 30	6' - 6"
DENSE SAND	N = 30 TO 50	6' - 0"

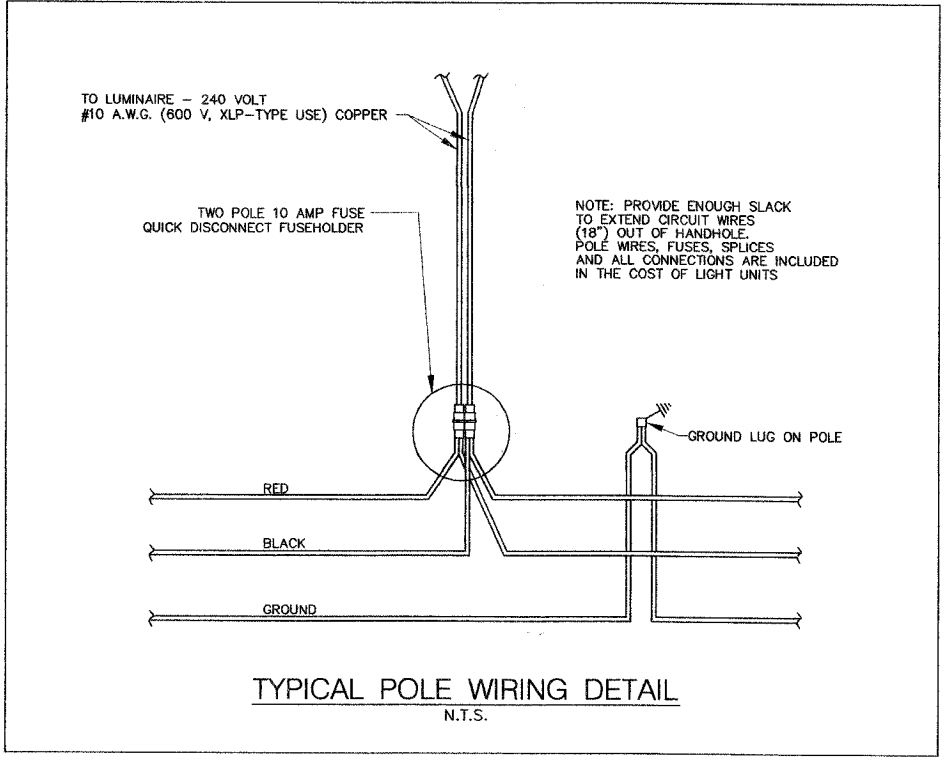


- NOTES:
1. CONCRETE SHALL BE CLASS SI WITH A MINIMUM COMPRESSIVE STRENGTH OF 3500 PSI.
 2. REINFORCING BARS SHALL BE NEW BILLET STEEL (ASTM A615), FY=60,000 PSI, DEFORMED PER ASTM A307.
 3. THE HOLE FOR THE FOUNDATION SHALL BE AUGERED.
 4. THE TOP 10" OF THE ANCHOR BOLTS SHALL BE GALVANIZED. EACH ANCHOR BOLT SHALL BE SUPPLIED WITH TWO FLAT GALVANIZED STEEL WASHERS.

LIGHT POLE FOUNDATION
N.T.S.



TRENCH DETAIL
N.T.S.



TYPICAL POLE WIRING DETAIL
N.T.S.

REVISIONS	
NAME	DATE

ILLINOIS DEPARTMENT OF TRANSPORTATION
F.A.U. ROUTE 2689
WOLF ROAD COMMUTER PARKING FACILITY EXPANSION

LIGHTING DETAILS

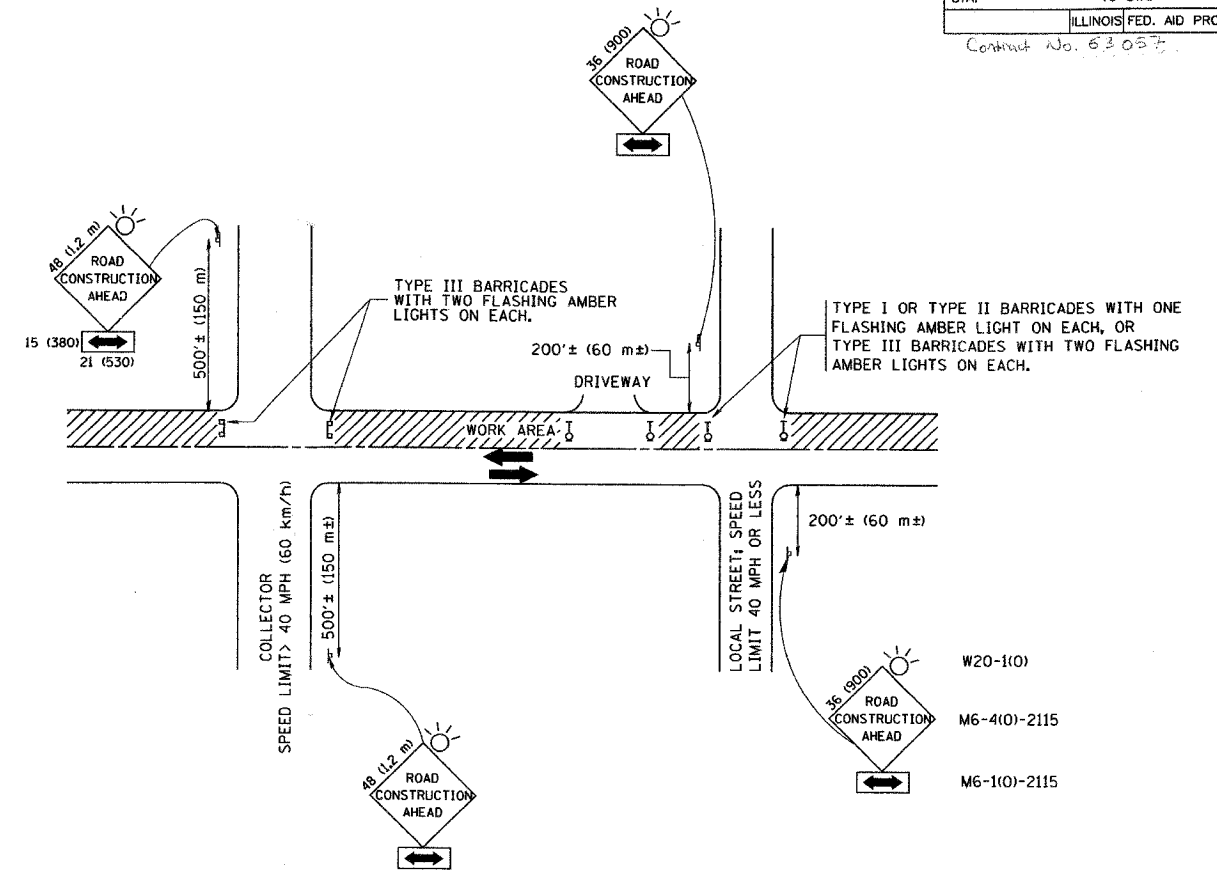
SCALE: 1"=20"
DATE:

DRAWN BY: BCD
CHECKED BY: JDM

JJB JAMES J. BENES & ASSOCIATES, INC.
950 Warrenville Road, Suite 101, Lisle, Illinois 60532
Tel. (630) 719-7570 · Fax (630) 719-7589

F.A.U. RTE.	SECTION	COUNTY	TOTAL SHEETS	SHEET NO.
2689	06-00087-00-PK	COOK	18	17
STA.		TO STA.		
ILLINOIS FED. AID PROJECT				

Contract No. 63057



TRAFFIC CONTROL AND PROTECTION FOR SIDE ROADS, INTERSECTIONS, AND DRIVEWAYS

NOTES:

- A. FOR NO LANE RESTRICTION ON THE SIDE ROAD OR DRIVEWAYS**
- SIDE ROAD WITH A SPEED LIMIT OF 40 MPH (60 km/h) OR LESS AS SHOWN ON THE DRAWING AND AS DIRECTED BY THE ENGINEER:
 - ONE ROAD CONSTRUCTION AHEAD SIGN 36 x 36 (900x900) WITH A FLASHER AND FLAG MOUNTED ON IT APPROXIMATELY 200' (60 m) IN ADVANCE OF THE MAIN ROUTE.
 - THE CLOSED PORTION OF THE MAIN ROUTE SHALL BE PROTECTED BY BLOCKING WITH TYPE I, TYPE II OR TYPE III BARRICADES, 1/3 OF THE CROSS SECTION OF THE CLOSED PORTION.
 - SIDE ROAD WITH A SPEED LIMIT GREATER THAN 40 MPH (60 km/h) AS SHOWN ON THE DRAWING AND AS DIRECTED BY THE ENGINEER:
 - ONE ROAD CONSTRUCTION AHEAD SIGN 48 x 48 (1.2 m x 1.2 m) WITH A FLASHER MOUNTED ON IT APPROXIMATELY 500' (150 m) IN ADVANCE OF THE MAIN ROUTE.
 - THE CLOSED PORTION OF THE MAIN ROUTE SHALL BE PROTECTED BY BLOCKING WITH TYPE III BARRICADES, 1/2 OF THE CROSS SECTION OF THE CLOSED PORTION.
 - WHEN THE SIDE ROAD LIES BETWEEN THE BEGINNING OF THE MAINLINE SIGNING AND THE WORK ZONE, A SINGLE HEADED ARROW (M6-1) SHALL BE USED IN LIEU OF THE DOUBLE HEADED ARROW (M6-4).
- B. FOR A LANE CLOSURE ON A SIDE ROAD OR DRIVEWAY:**
- USE APPLICABLE PORTIONS OF THE TYPICAL APPLICATION OF TRAFFIC CONTROL DEVICES (STD. 701501, STD. 701606 OR THE APPROPRIATE STANDARD). THE SPACING OF SIGNS AND BARRICADES SHALL BE ADJUSTED FOR FIELD CONDITIONS AS DIRECTED BY THE ENGINEER. THE DIRECTIONAL ARROW SHALL BE COVERED OR REMOVED WHEN NO LONGER CONSISTENT WITH THE SIDE ROAD LANE CLOSURE.
- C. ADVANCE WARNING SIGNS ARE TO BE OMITTED ON DRIVEWAY UNLESS OTHERWISE NOTED.**
- D. THE TRAFFIC CONTROL AND PROTECTION FOR SIDE ROADS, INTERSECTIONS, AND DRIVEWAYS SHALL BE INCIDENTAL TO THE COST OF SPECIFIED TRAFFIC CONTROL STANDARDS OR ITEMS.**

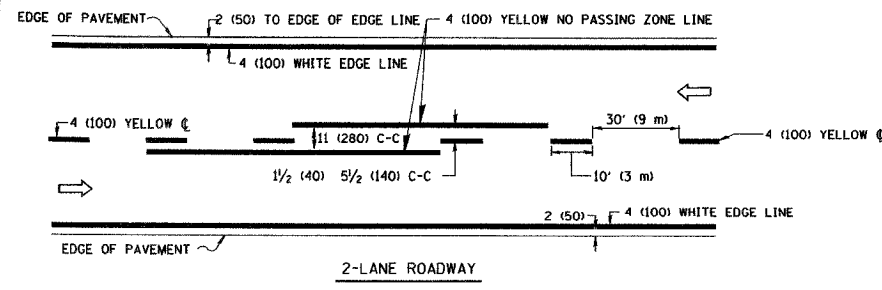
All dimensions are in millimeters (inches) unless otherwise shown.

REVISIONS	
NAME	DATE
LHA	6/89
T. RAMMACHER	09/08/94
J. OBERLE	10/18/95
A. HOUSEH	03/06/96
A. HOUSEH	10/15/96
T. RAMMACHER	01/06/00

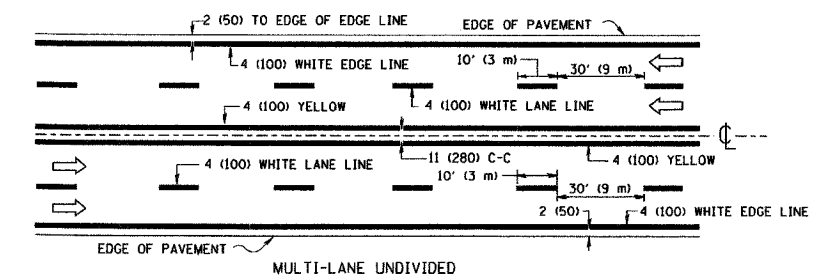
ILLINOIS DEPARTMENT OF TRANSPORTATION
 TRAFFIC CONTROL AND PROTECTION FOR
 SIDE ROADS, INTERSECTIONS, AND
 DRIVEWAYS

SCALE: NONE
 DRAWN BY
 CHECKED BY
 TC-10

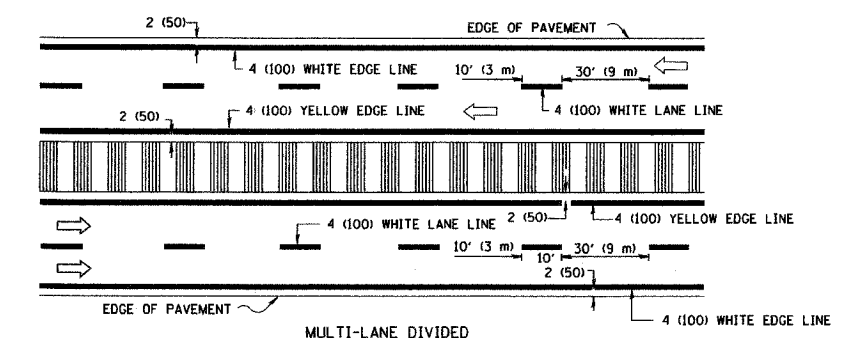
PLOT DATE = 2/6/2007
 FILE NAME = K:\chris\1010.dwg
 PLOT SCALE = 0.1000 / IN.
 USER NAME = bward



2-LANE ROADWAY



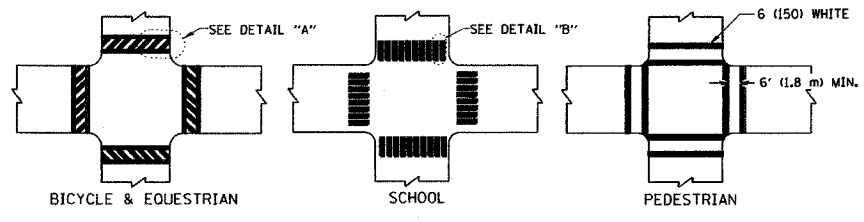
MULTI-LANE UNDIVIDED



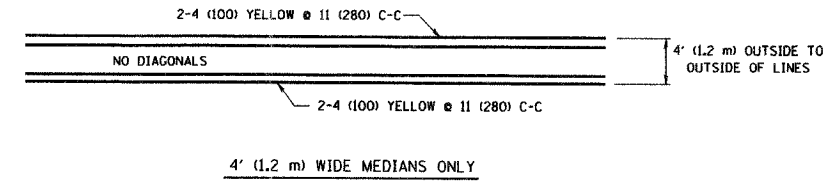
MULTI-LANE DIVIDED WITH MOUNTABLE MEDIAN

NOTE: MEDIANS WITH BARRIER CURB DO NOT REQUIRE AN EDGE LINE

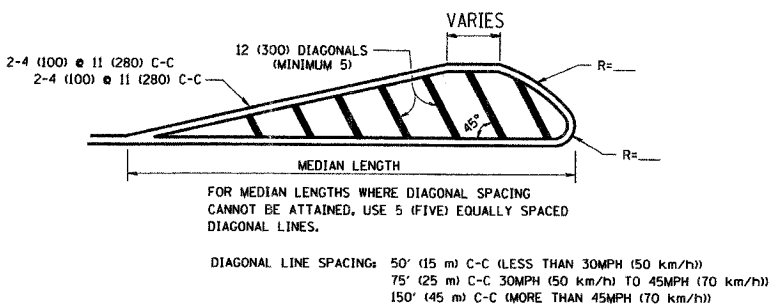
TYPICAL LANE AND EDGE LINE MARKING



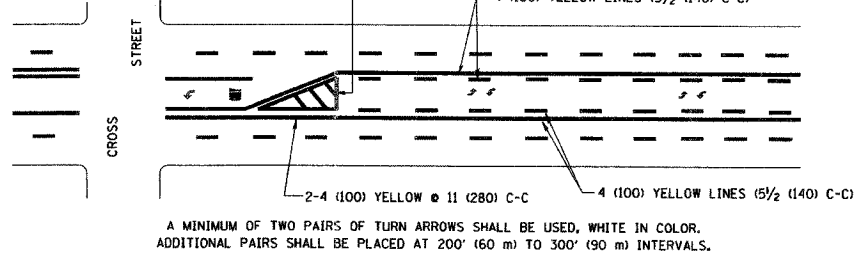
TYPICAL CROSSWALK MARKING



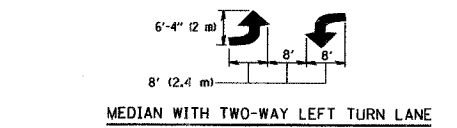
4' (1.2 m) WIDE MEDIANS ONLY



MEDIANS OVER 4' (1.2 m) WIDE



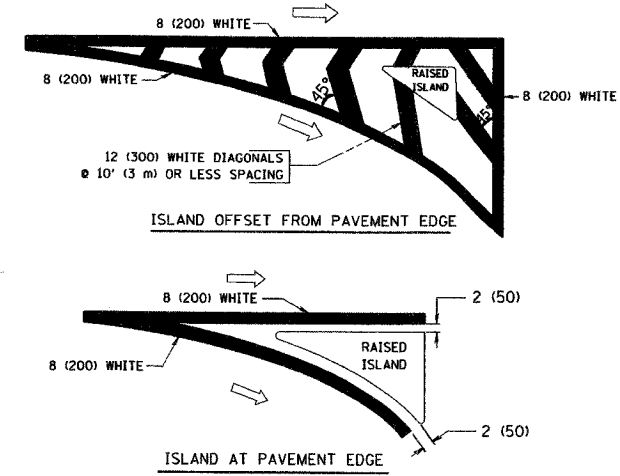
TYPICAL PAINTED MEDIAN MARKING



TYPICAL LEFT (OR RIGHT) TURN LANE MARKING

FULL SIZE LETTERS 8' (2.4 m) AND ARROWS SHALL BE USED.
 AREA = 15.6 SQ. FT. (1.5 m²) ONLY AREA = 20.8 SQ. FT. (1.9 m²)
 * TURN LANES IN EXCESS OF 400' (120 m) IN LENGTH MAY HAVE AN ADDITIONAL SET OF ARROW - "ONLY" INSTALLED MIDWAY BETWEEN THE OTHER TWO SETS OF ARROW - "ONLY".

TYPICAL TURN LANE MARKING



TYPICAL ISLAND MARKING

TYPE OF MARKING	WIDTH OF LINE	PATTERN	COLOR	SPACING / REMARKS
CENTERLINE ON 2 LANE PAVEMENT	4 (100)	SKIP-DASH	YELLOW	10' (3 m) LINE WITH 30' (9 m) SPACE
CENTERLINE ON MULTI-LANE UNDIVIDED PAVEMENT	2 @ 4 (100)	SOLID	YELLOW	11 (280) C-C
NO PASSING ZONE LINES: FOR ONE DIRECTION	4 (100)	SOLID	YELLOW	5/2' (140) C-C FROM SKIP-DASH CENTERLINE
NO PASSING ZONE LINES: FOR BOTH DIRECTIONS	2 @ 4 (100)	SOLID	YELLOW	11 (280) C-C OMIT SKIP-DASH CENTERLINE BETWEEN
LANE LINES	4 (100) 5 (125) ON FREEWAYS	SKIP-DASH SKIP-DASH	WHITE WHITE	10' (3 m) LINE WITH 30' (9 m) SPACE
DOTTED LINES (EXTENSIONS OF CENTER, LANE OR TURN LANE MARKINGS)	SAME AS LINE BEING EXTENDED	SKIP-DASH	SAME AS LINE BEING EXTENDED	2' (600) LINE WITH 6' (1.8 m) SPACE
EDGE LINES	4 (100)	SOLID	YELLOW-LEFT WHITE-RIGHT	OUTLINE MOUNTABLE MEDIANS IN YELLOW. EDGE LINES ARE NOT USED NEXT TO BARRIER CURB
TURN LANE MARKINGS	6 (150) LINE; FULL SIZE LETTERS & SYMBOLS (8' (2.4m))	SOLID	WHITE	SEE TYPICAL TURN LANE MARKING DETAIL
TWO WAY LEFT TURN MARKING	2 @ 4 (100) EACH DIRECTION	SKIP-DASH AND SOLID	YELLOW	10' (3 m) LINE WITH 30' (9 m) SPACE FOR SKIP-DASH; 5/2' (140) C-C BETWEEN SOLID LINE AND SKIP-DASH LINE
	8' (2.4m) LEFT ARROW	IN PAIRS	WHITE	SEE TYPICAL TWO-WAY LEFT TURN MARKING DETAIL
CROSSWALK LINES (PEDESTRIAN)	2 @ 6 (150)	SOLID	WHITE	NOT LESS THAN 6' (1.8 m) APART
A. DIAGONALS (BIKE & EQUESTRIAN)	12 (300) @ 45°	SOLID	WHITE	2' (600) APART
B. LONGITUDINAL BARS (SCHOOL)	12 (300) @ 90°	SOLID	WHITE	2' (600) APART
				SEE TYPICAL CROSSWALK MARKING DETAILS.
STOP LINES	24 (600)	SOLID	WHITE	PLACE 4' (1.2 m) IN ADVANCE OF AND PARALLEL TO CROSSWALK, IF PRESENT. OTHERWISE, PLACE AT DESIRED STOPPING POINT, PARALLEL TO CROSSROAD CENTERLINE, WHERE POSSIBLE
PAINTED MEDIANS	2 @ 4 (100) WITH 12 (300) DIAGONALS @ 45°	SOLID	YELLOW; TWO WAY TRAFFIC WHITE; ONE WAY TRAFFIC	11 (280) C-C FOR THE DOUBLE LINE SEE TYPICAL PAINTED MEDIAN MARKING.
CORE MARKING AND CHANNELIZING LINES	8 (200) WITH 12 (300) DIAGONALS @ 45°	SOLID	WHITE	DIAGONALS: 15' (4.5 m) C-C (LESS THAN 30MPH (50 km/h)) 20' (6 m) C-C 30MPH (50 km/h) TO 45MPH (70 km/h) 30' (9 m) C-C (OVER 45MPH (70 km/h))
RAILROAD CROSSING	24 (600) TRANSVERSE LINES; "RR" 15 6' (1.8 m) LETTERS; 16 (400) LINE FOR "X"	SOLID	WHITE	SEE STATE STANDARD 780001 AREA OF: "R"=3.6 SQ. FT. (0.33 m ²) EACH "X"=54.0 SQ. FT. (5.0 m ²)
SHOULDER DIAGONALS	12 (300) @ 45°	SOLID	WHITE - RIGHT YELLOW - LEFT	50' (15 m) C-C (LESS THAN 30MPH (50 km/h)) 75' (25 m) C-C (30 MPH (50 km/h) TO 45MPH (70 km/h)) 150' (45 m) C-C (OVER 45MPH (70 km/h))

FOR FURTHER DETAILS ON PAVEMENT MARKING REFER TO STANDARD SPECIFICATIONS FOR ROAD AND BRIDGE CONSTRUCTION AND STATE STANDARD 780001.

All dimensions are in inches (millimeters) unless otherwise shown.

REVISIONS	
NAME	DATE
EVERS	03-19-90
T. RAMMACHER	10-27-94
ALEX HOUSEH	10-09-96
ALEX HOUSEH	10-17-96
T. RAMMACHER	01-06-00

ILLINOIS DEPARTMENT OF TRANSPORTATION
 DISTRICT ONE
 TYPICAL PAVEMENT MARKINGS
 SCALE: NONE
 DRAWN BY CADD
 CHECKED BY
 TC-13