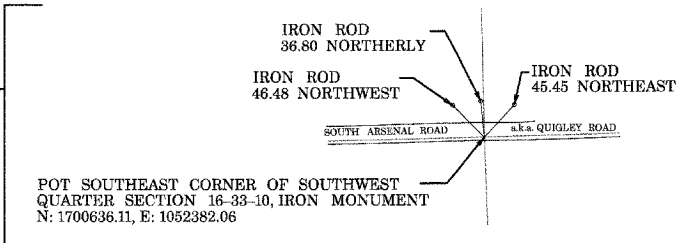
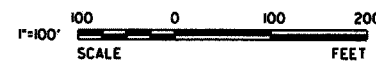
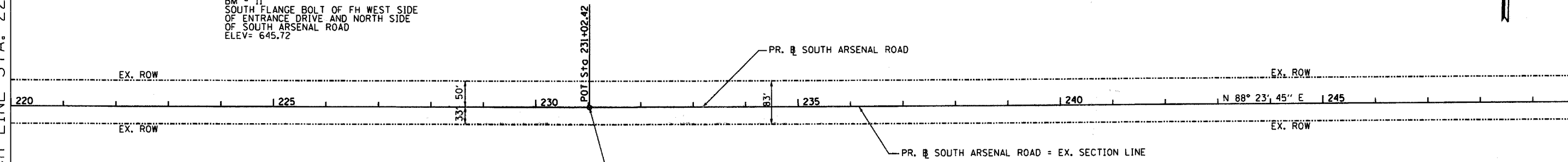


MATCH LINE STA. 220+00

**BENCHMARKS**

- BM #8  
SPIKE IN UTILITY POLE AT 20221  
SOUTH ARSENAL ROAD  
ELEV= 606.20
- BM #9  
SPIKE IN SECOND UTILITY POLE WEST  
OF 200TH AVE., SOUTH SIDE SOUTH  
ARSENAL ROAD  
ELEV= 613.30
- BM #10  
SPIKE IN TREE  
ELEV= 626.35
- BM # 11  
SOUTH FLANGE BOLT OF FH WEST SIDE  
OF ENTRANCE DRIVE AND NORTH SIDE  
OF SOUTH ARSENAL ROAD  
ELEV= 645.72



MATCH LINE STA. 250+00

6/16/2008 8:48:01 AM J:\Projects\Joliet Arsenal Development Authority\South Arsenal Road\ESR\CADD\Sheet\08 ALGN.Laht

**ESI** ESI CONSULTANTS, LTD  
1978 N. MIL. STREET, SUITE 100  
NAPERVILLE, IL 60563  
(630) 420-1700  
WWW.ESICONSULTANTS.COM

|                  |           |
|------------------|-----------|
| DESIGNED - JRS   | REVISED - |
| DRAWN - DJN      | REVISED - |
| CHECKED - MAR    | REVISED - |
| DATE - 6/16/2008 | REVISED - |

**STATE OF ILLINOIS  
DEPARTMENT OF TRANSPORTATION**

**ALIGNMENT AND TIES**

SCALE: SHEET NO. OF SHEETS STA. TO STA.

|   |                |        |              |           |
|---|----------------|--------|--------------|-----------|
| F.A. RTE.                                     | SECTION        | COUNTY | TOTAL SHEETS | SHEET NO. |
|   | 08-00039-00-FP | WILL   | 89           | 8         |
| CONTRACT NO. 63066                            |                |        |              |           |
| FED. ROAD DIST. NO. ILLINOIS FED. AID PROJECT |                |        |              |           |