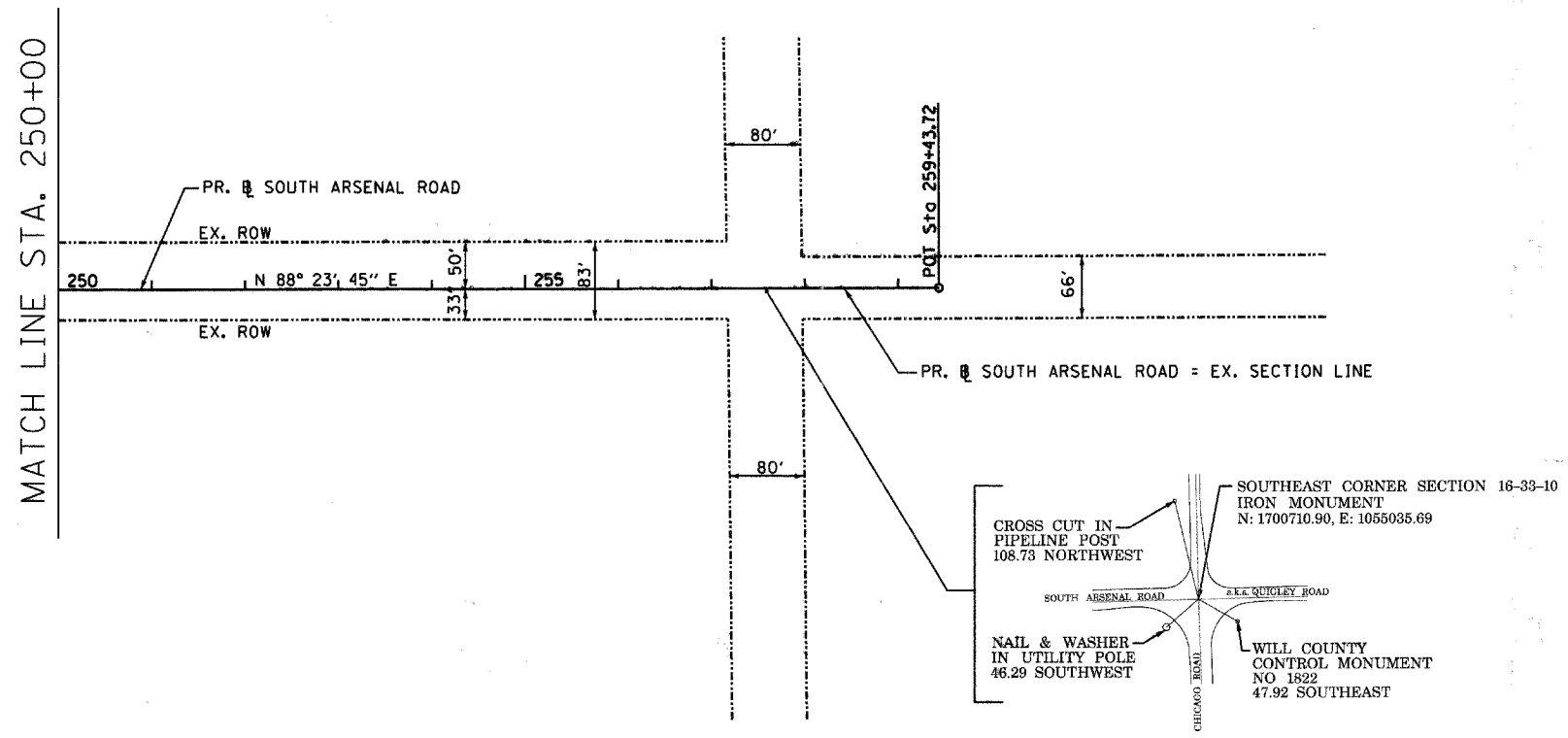


6/16/2008 K:\Projects\Joliet Arsenal Development Authority\South Arsenal Road.Esd\East\CADD\Sheet\09 ALGN.2.sht



MATCH LINE STA. 250+00

BENCHMARKS

BM #12
TOP OF IRON ROD 42' NORTH OF
SOUTH ARSENAL ROAD 1073' WEST
OF OLD CHICAGO ROAD
ELEV= 642.40

WILL COUNTY CONTROL MONUMENT 1882
PROJECT BASE POINT
ELEV= 639.35 NAVD 88

ESI CONSULTANTS, LTD
1010 N. MILL STREET, SUITE 100
NAPERVILLE, IL 60563
(630) 420-7700
WWW.ESICONSULTANTS.LTD.COM
ILLINOIS DEPARTMENT OF PROFESSIONAL REGULATION REGISTRATION #184-003955

DESIGNED - JRS	REVISED -
DRAWN - DJN	REVISED -
CHECKED - MAR	REVISED -
DATE - 6/16/2008	REVISED -

STATE OF ILLINOIS
DEPARTMENT OF TRANSPORTATION

ALIGNMENT AND TIES

SCALE: 1"=100' SHEET NO. OF SHEETS STA. 250+00 TO STA. 258+09

F.A. RTE.	SECTION	COUNTY	TOTAL SHEETS	SHEET NO.
	08-00039-00-FP	WILL	89	9
FED. ROAD DIST. NO.			ILLINOIS FED. AID PROJECT	
			CONTRACT NO. 63066	