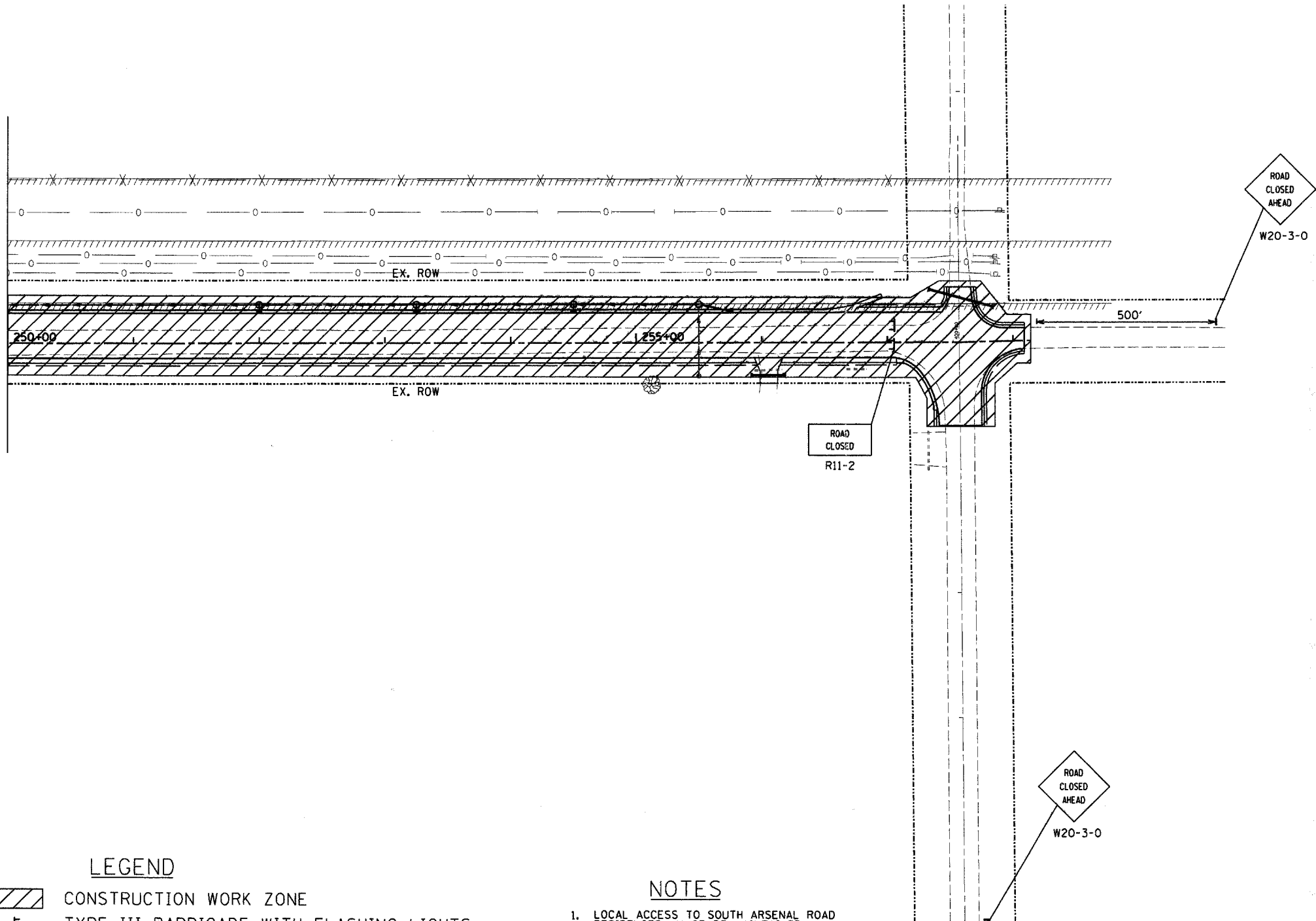


6/16/2008 AgProj.ctb South Arsenal Development Authority\South Arsenal Road.Eas\CAD\Drawings\MOT_02.03.sht

MATCH LINE STA. 250+00



LEGEND

- CONSTRUCTION WORK ZONE
- TYPE III BARRICADE WITH FLASHING LIGHTS
- SIGN

NOTES

1. LOCAL ACCESS TO SOUTH ARSENAL ROAD RESIDENCES MUST BE MAINTAINED DURING CONSTRUCTION
2. INTERSECTION SHALL BE OPEN DURING STAGED CONSTRUCTION

ESI CONSULTANTS, LTD
 1575 N. MILL STREET, SUITE 100
 NAPERVILLE, IL 60563
 (630) 420-1700
 WWW.ESICONSULTANTS.LTD.COM
 ILLINOIS DEPARTMENT OF PROFESSIONAL REGULATION REGISTRATION #184-003086

DESIGNED - JRS	REVISED -
DRAWN - DJN	REVISED -
CHECKED - MAR	REVISED -
DATE - 6/16/2008	REVISED -

DESIGNED - JRS	REVISED -
DRAWN - DJN	REVISED -
CHECKED - MAR	REVISED -
DATE - 6/16/2008	REVISED -

**STATE OF ILLINOIS
DEPARTMENT OF TRANSPORTATION**

**MAINTENANCE OF TRAFFIC PLAN
STAGE 2**

SCALE: 1"=50' SHEET NO. OF SHEETS STA. 250+00 TO STA. 258+09

F.A. RTE.	SECTION	COUNTY	TOTAL SHEETS	SHEET NO.
	08-00039-00-FP	WILL	89	49
FED. ROAD DIST. NO.			ILLINOIS FED. AID PROJECT	
			CONTRACT NO. 63066	