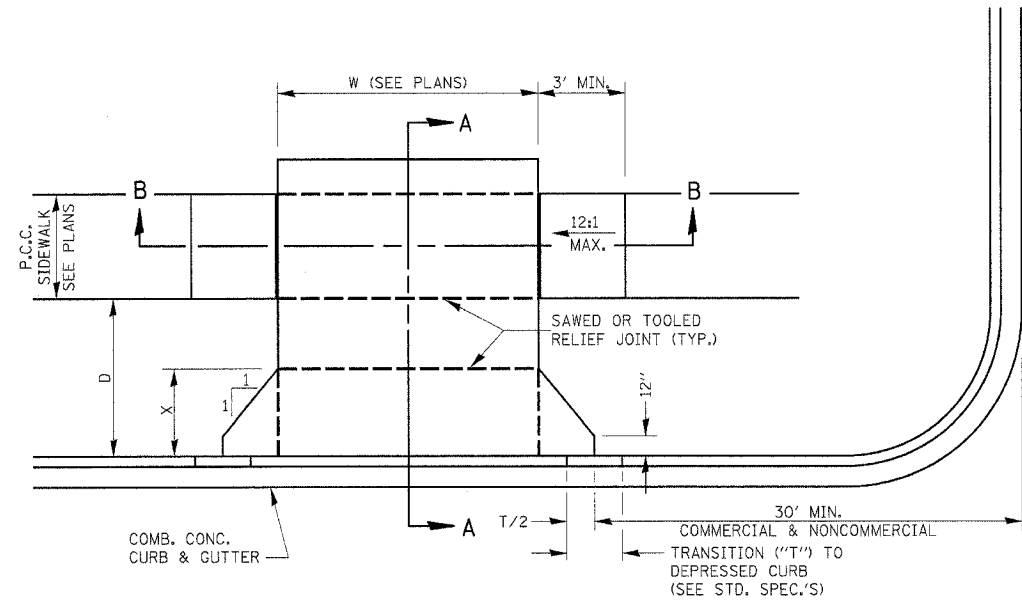
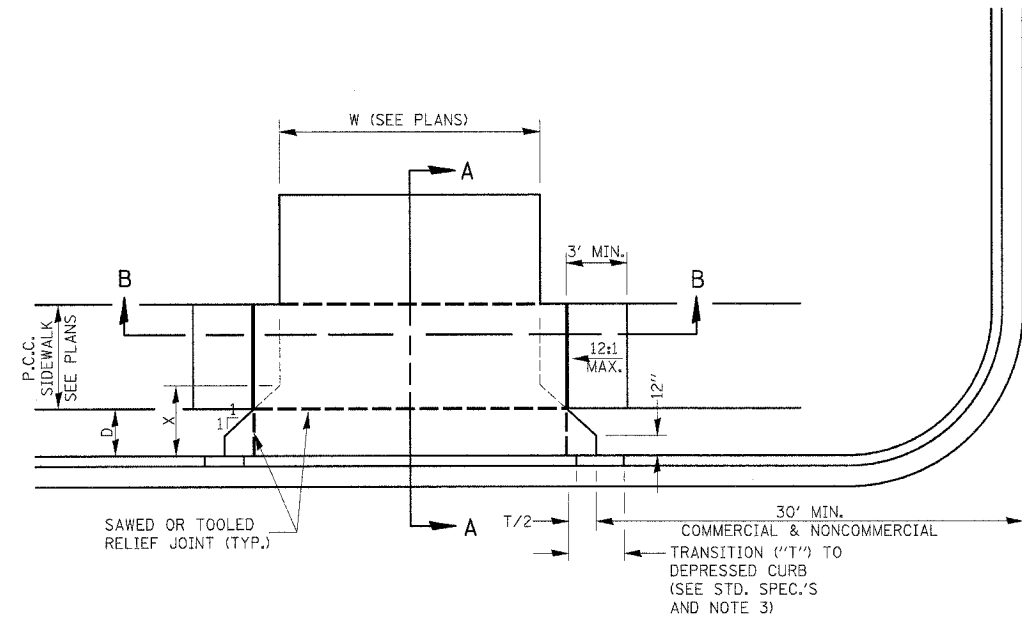


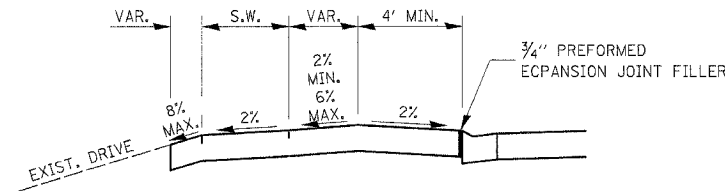
F.A.P. RTE.	SECTION	COUNTY	TOTAL SHEETS	SHEET NO.
326	(111CS) W&RS-21	GRUNDY	85	53
STA.		TO STA.		
FED. ROAD DIST. NO.		ILLINOIS FED. AID PROJECT		



CASE I (D ≥ X)

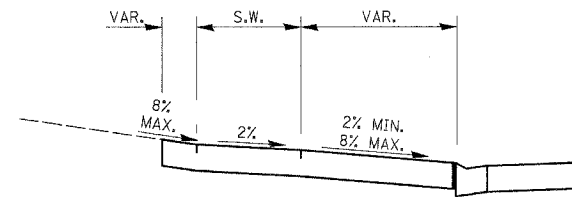


CASE I (D < X)

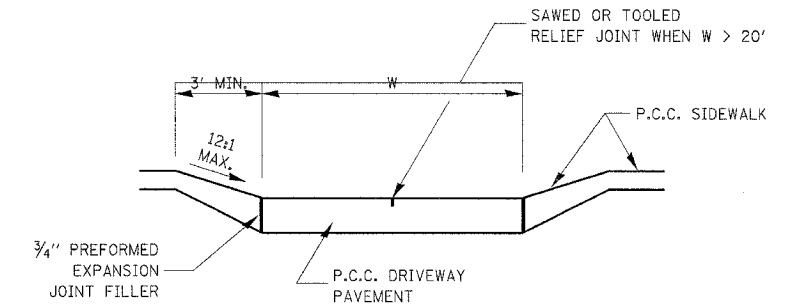


DEPRESSED ENTRANCE\*  
SECTION A-A

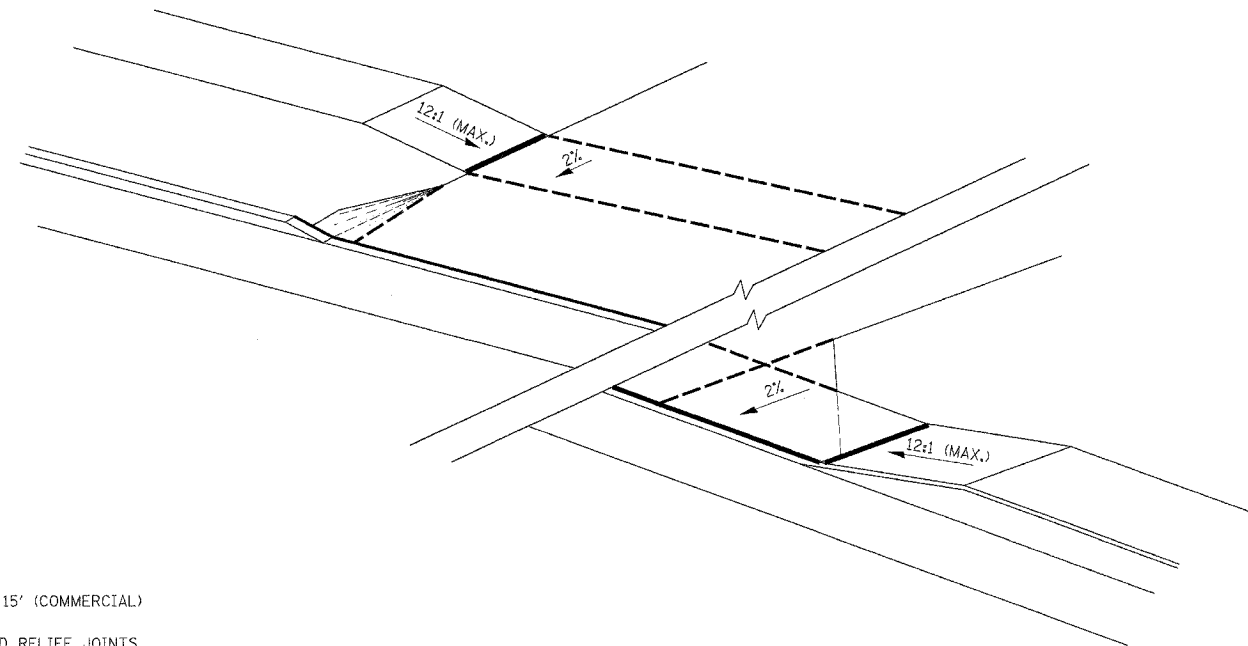
\*(SEE X-SECTIONS FOR ENTRANCE PROFILE.)



ELEVATED ENTRANCE\*  
SECTION A-A



SECTION B-B



GENERAL NOTES:

- X = 7' (NON-COMMERCIAL) X = 15' (COMMERCIAL)
- COST OF EXPANSION JOINTS AND RELIEF JOINTS SHALL BE INCLUDED IN THE COST OF THE P.C.C. DRIVEWAY PAVEMENT.
- AS THE DIMENSION "D" APPROACHES ZERO, THE TRANSITION TO DEPRESSED CURB SHALL BE NO STEEPER THAN 12:1

**PCC URBAN ENTRANCES**

423-1

REVISIONS	
NAME	DATE

ILLINOIS DEPARTMENT OF TRANSPORTATION  
DISTRICT DETAILS  
IL ROUTE 47  
GRUNDY COUNTY

SCALE: NTS  
DATE: 09/2007

DRAWN BY: KHH  
CHECKED BY: FML