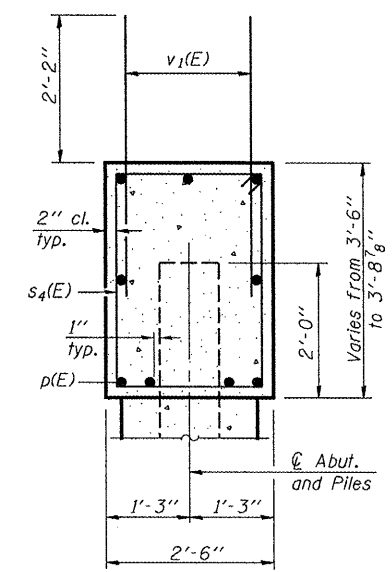
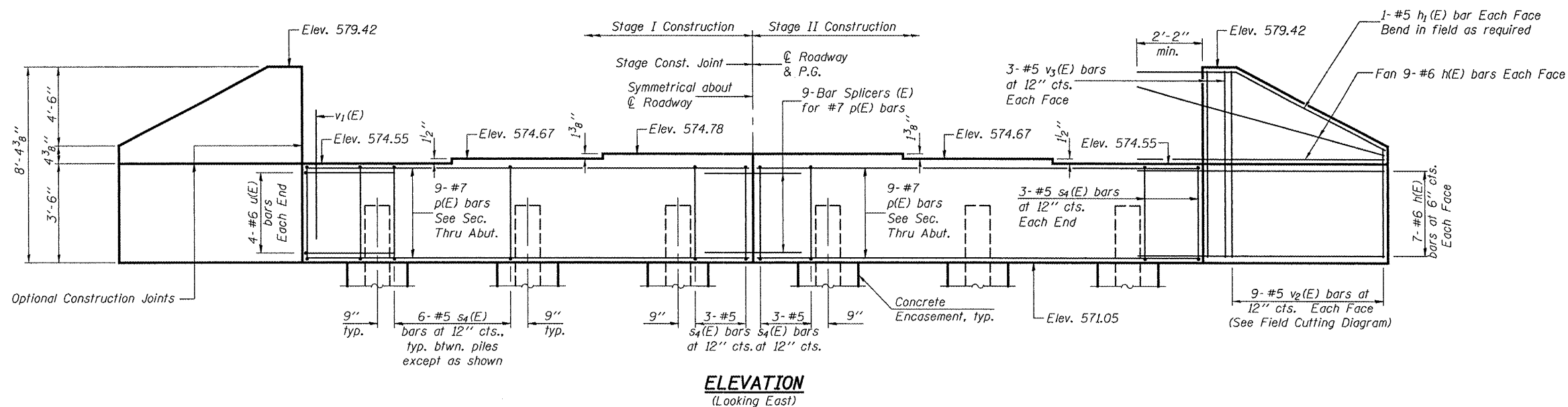


Notes: Pour steps monolithically with cap.

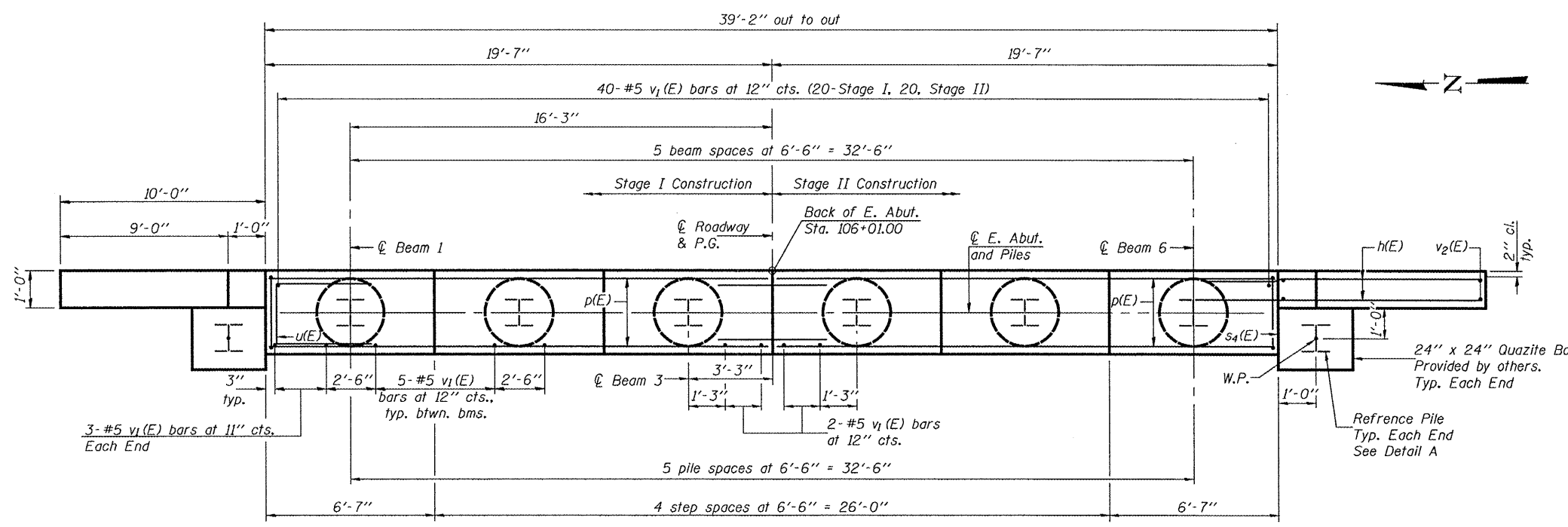
STATE OF ILLINOIS
DEPARTMENT OF TRANSPORTATION

ROUTE NO.	SECTION	COUNTY	SHEET NO.	SHEET NO.
FAP 769	110B-2	MACOUPIN	98	68
FED. ROAD DIST. NO. 7	ILLINOIS	FED. AID PROJECT	38 SHEETS	

Contract #72813



SEC. THRU ABUT.



BILL OF MATERIAL

Bar	No.	Size	Length	Shape
h(E)	64	#6	13'-0"	—
h1(E)	4	#5	13'-3"	—
p(E)	18	#7	19'-4"	—
s4(E)	36	#5	11'-7"	□
u(E)	8	#6	8'-1"	—
v1(E)	70	#5	4'-4"	—
v2(E)	18	#5	11'-8"	—
v3(E)	8	#5	8'-1"	—
Structure Excavation		Cu. Yd.	196.8	
Concrete Structures		Cu. Yd.	17.8	
Reinforcement Bars, Epoxy Coated		Pound	3150	
Furnishing Steel Piles, HP12x63		Foot	294	
Bar Splicers (E)		Each	9	
Driving Piles		Foot	294	
Test Pile, HP12x63		Each	1	
Concrete Encasement		Cu. Yd.	2.1	

For details of Bar Splicers, see sheet 33 of 38.
For details of piles and Concrete Encasement, see sheet 32 of 38.
For Detail A, see sheet 27 of 38.

PILE DATA

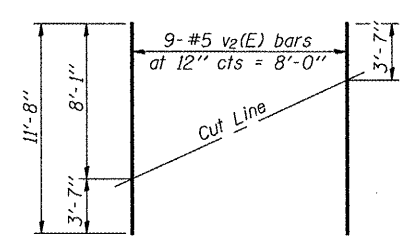
Type: HP12x63
Nominal Required Bearing: 497 kips
Factored Resistance Available: 248 kips
Est. Length: 42'-0"
No. Production Piles: 5
No. Test Piles: 1
No. Reference Piles: 2

DESIGNED	Tom Kurtenbach
CHECKED	Jay Edwards
DRAWN	BECKY M. LEACH
CHECKED	TK/JE

June 17, 2008
EXAMINED *Thomas J. Domagalicki*
PASSED *Robert E. Anderson*
ENGINEER OF BRIDGE DESIGN
ENGINEER OF BRIDGES AND STRUCTURES

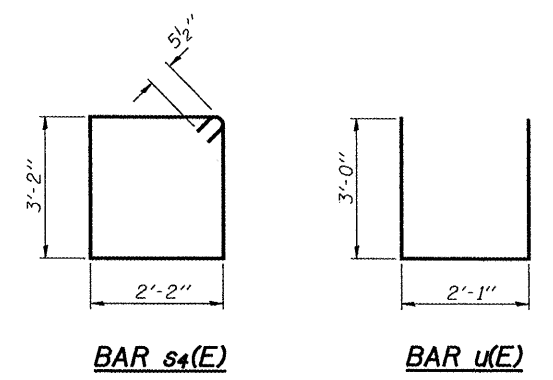
AI-0 11-1-06

PLAN



FIELD CUTTING DIAGRAM

Order v2(E) full length. Cut as shown and use remainder of bars in opposite face.



EAST ABUTMENT
F.A.P. ROUTE 769 - SEC. 110B-2
MACOUPIN COUNTY
STATION 104+41.00
STRUCTURE NO. 059-0509