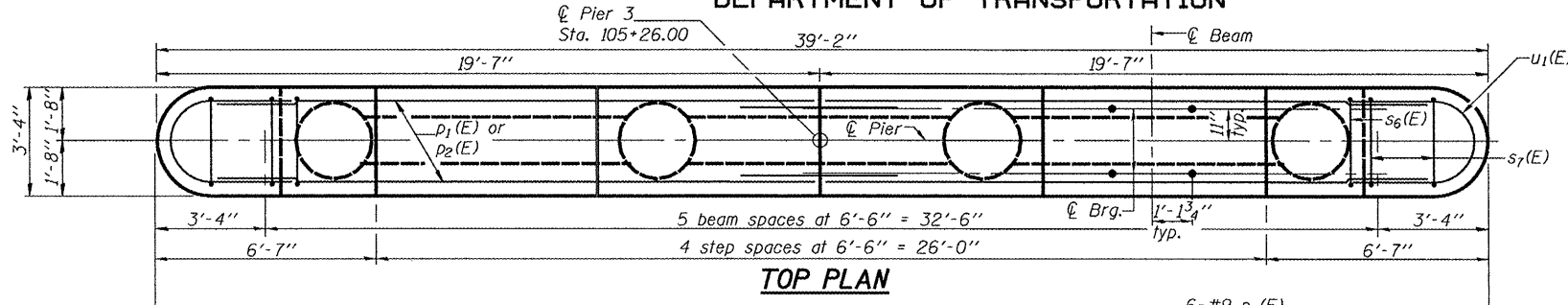


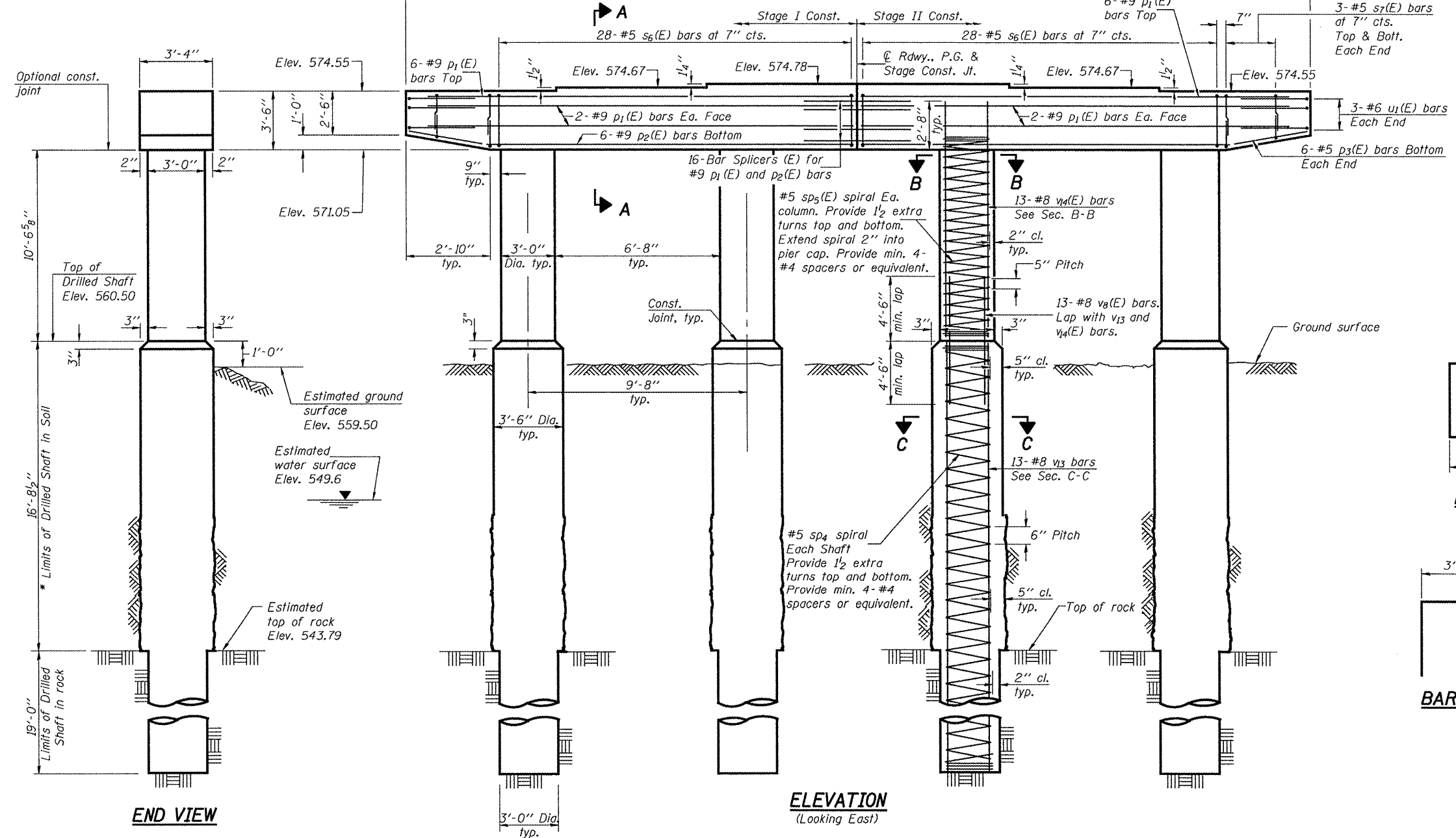
STATE OF ILLINOIS  
DEPARTMENT OF TRANSPORTATION

ROUTE NO.	SECTION	COUNTY	SHEET	SHEET NO.
FAP 769	110B-2	MACOUPIN	98	71
FED. ROAD DIST. NO. 7		ILLINOIS	FED. AID PROJECT	38 SHEETS

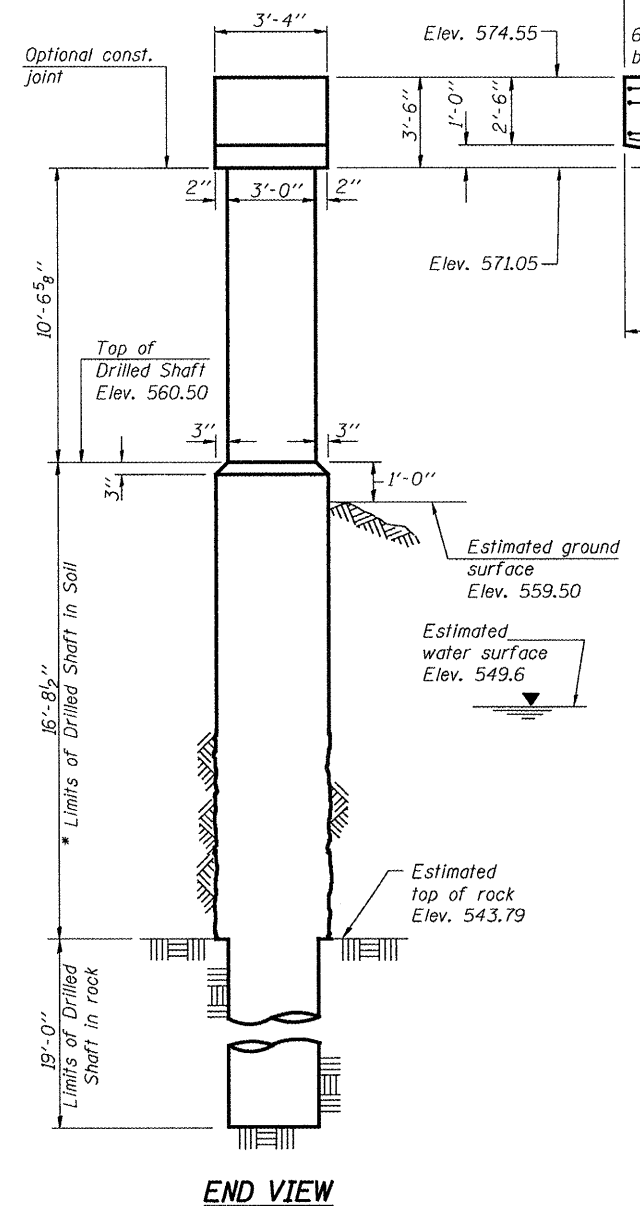
Contract #72813



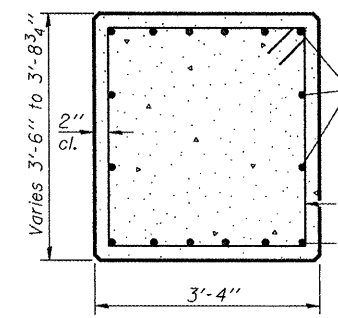
TOP PLAN



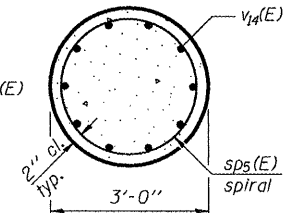
ELEVATION  
(Looking East)



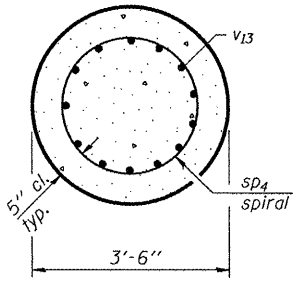
END VIEW



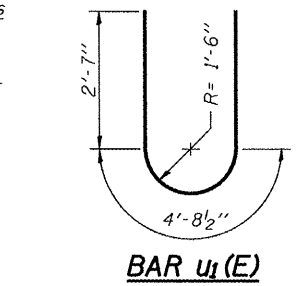
SECTION A-A



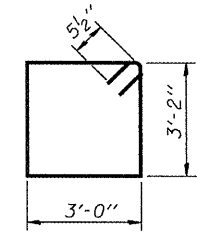
SECTION B-B



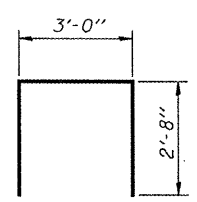
SECTION C-C



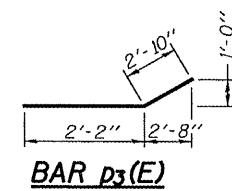
BAR u1(E)



BAR s6(E)



BAR s7(E)



BAR p3(E)

BILL OF MATERIAL

Bar	No.	Size	Length	Shape
p1(E)	20	#9	17'-9"	—
p2(E)	12	#9	16'-7"	—
p3(E)	12	#5	5'-0"	—
s6(E)	56	#5	13'-3"	□
s7(E)	12	#5	8'-4"	U
** sp4	4	#5	35'-8"	AAA
** sp5(E)	4	#5	10'-9"	AAA
u1(E)	6	#6	9'-11"	U
v8(E)	52	#8	9'-3"	—
v13	52	#8	35'-5"	—
v4(E)	52	#8	13'-2"	—
Concrete Structures		Cu. Yd.	27.9	
Reinforcement Bars		Pound	7460	
Reinforcement Bars, Epoxy Coated		Pound	7020	
Underwater Structure Excavation Protection Location 3		Each	1	
Bar Splicers		Each	16	
Drilled Shaft in Soil		Cu. Yd.	23.8	
Drilled Shaft in Rock		Cu. Yd.	19.9	
Anchor Bolts 1" φ		Each	12	

Cast steps monolithically with cap.  
Space cap reinforcement to miss anchor bolts.  
Minimum lap for spirals = 12'-4"  
\*\* Length is height of spiral.

PIER 3  
F.A.P. ROUTE 769 - SEC. 110B-2  
MACOUPIN COUNTY  
STATION 104+41.00  
STRUCTURE NO. 059-0509

\* If the prevailing water surface elevation during construction is consistently different than estimated on the plans, the contractor may propose an adjustment to the top of the drilled shaft elevation as part of their installation procedure. The top of all drilled shafts within a substructure unit shall be constructed to the same elevation and extend above the prevailing water surface. The quantities and reinforcement detailing are based on the top of shaft and the estimated elevations shown and may change based on the actual elevations encountered at each shaft and the final top of shaft elevation.

DESIGNED Tom Kurtenbach  
CHECKED Jay Edwards  
DRAWN BECKY M. LEACH  
CHECKED TK/JE  
P-DS  
June 17, 2008  
EXAMINED Thomas J. Romagallo  
PASSED Robert A. Anderson  
ENGINEER OF BRIDGES AND STRUCTURES  
11-1-06