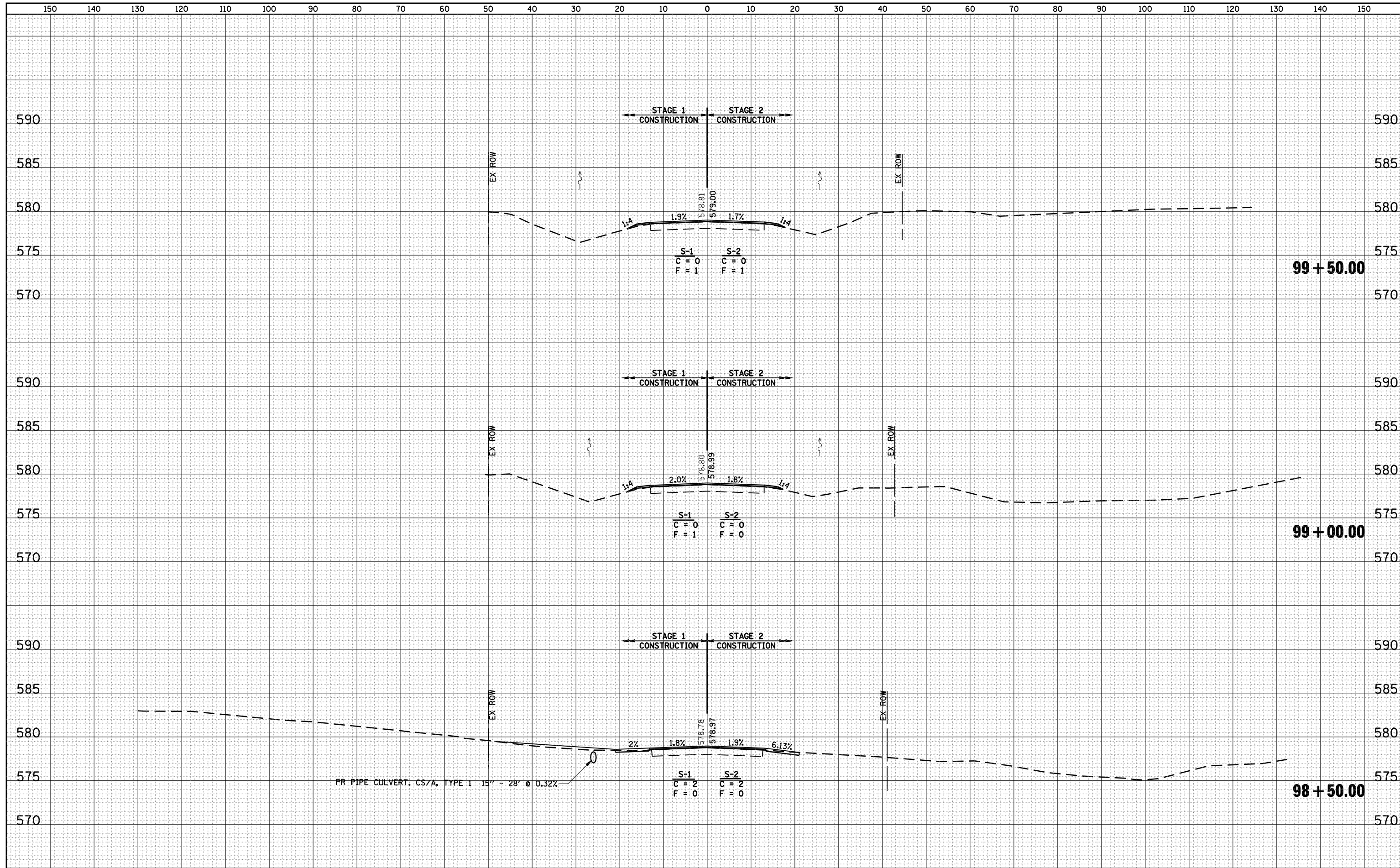


DATE	
BY	
SURVEYED	
PLOTTED	
TEMPLATE	
AREAS	
CHECKED	
FINAL SURVEY	
NOTE BOOK	
NO.	

DATE	
BY	
SURVEYED	
PLOTTED	
TEMPLATE	
AREAS	
CHECKED	
ORIGINAL SURVEY	
NOTE BOOK	
NO.	



FILE NAME = C:\Projects\d653603\ie_final\8006xs_11_108.sht	USER NAME = laughlinr1	DESIGNED -	REVISIED -	<b>STATE OF ILLINOIS</b> <b>DEPARTMENT OF TRANSPORTATION</b>	<b>CROSS SECTIONS - IL ROUTE 108</b>		F.A.P. RTE. 769	SECTION 110B-2	COUNTY MACOUPIN	TOTAL SHEETS 98	SHEET NO. 80	
PLOT SCALE = 20.0000' / IN.	CHECKED -	REVISIED -	REVISIED -		SCALE: H10 - V5	SHEET NO. OF SHEETS	STA. 98+50.00 TO STA. 99+50.00	FED. ROAD DIST. NO.	ILLINOIS FED. AID PROJECT	CONTRACT NO. 72813		
PLOT DATE = May-15-2008 03:18:39PM	DATE -	REVISIED -	REVISIED -									