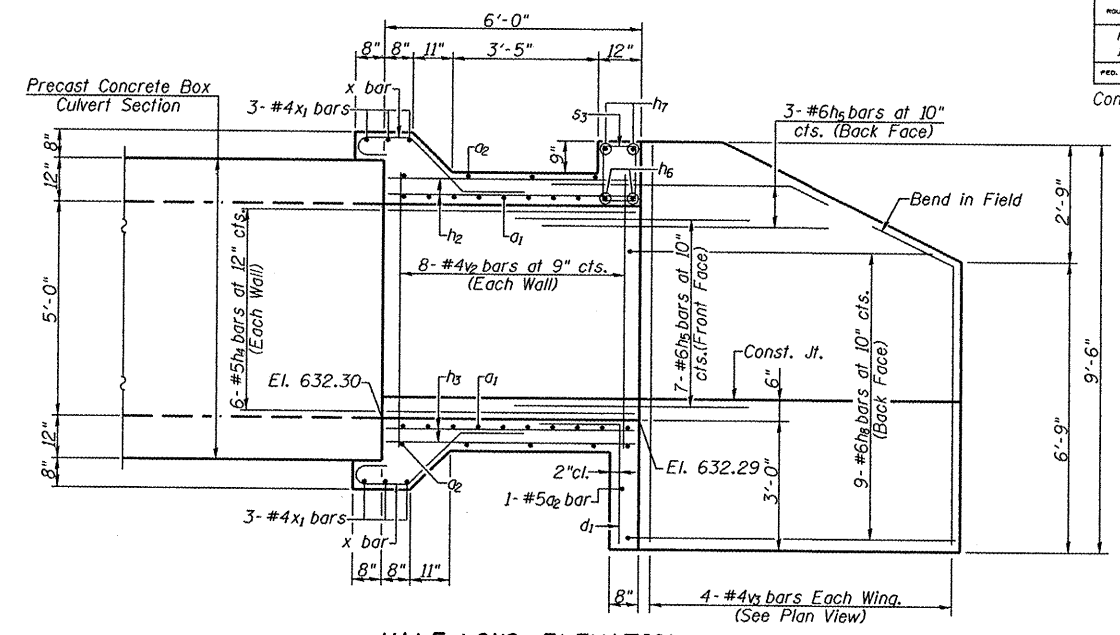
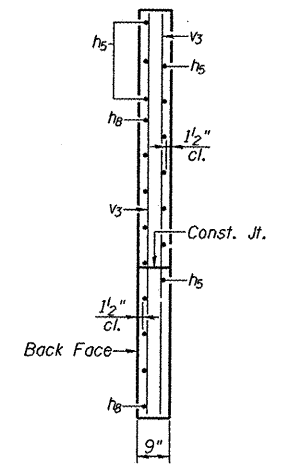


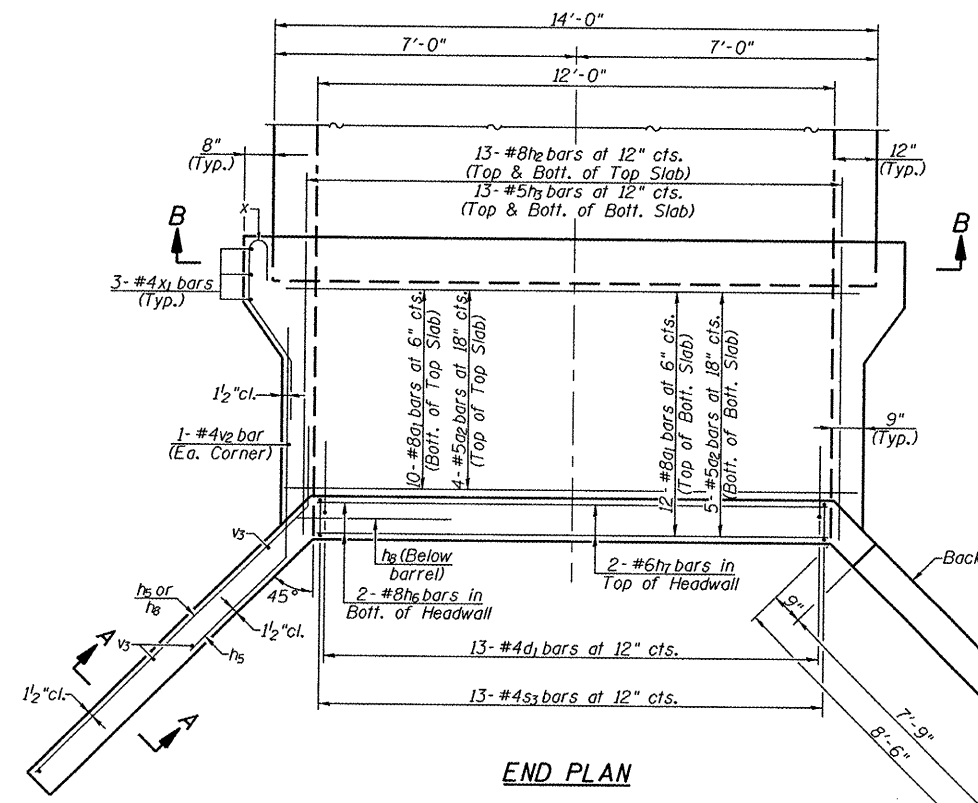
END ELEVATION



HALF LONG. ELEVATION

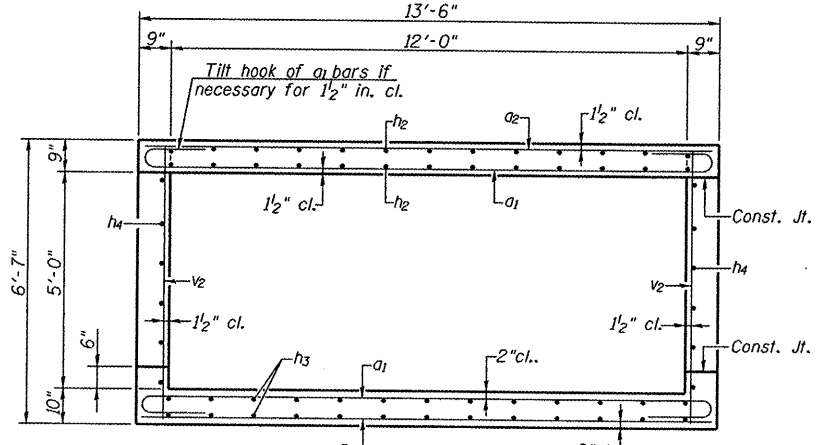


SECTION A-A

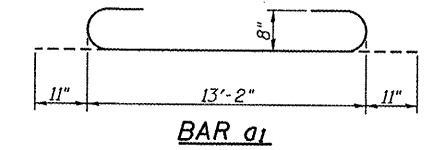


END PLAN

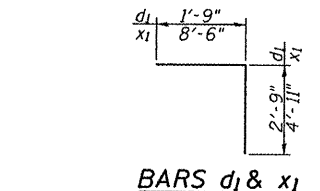
MIN. BAR LAP
1'-8"



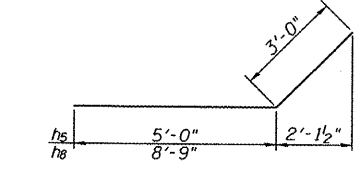
SECTION THRU CAST-IN-PLACE BARREL



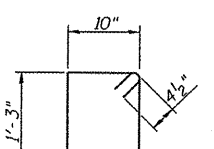
BAR a1



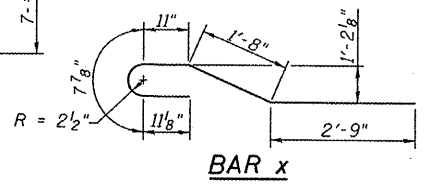
BARS d1 & x1



BARS h5 & h8



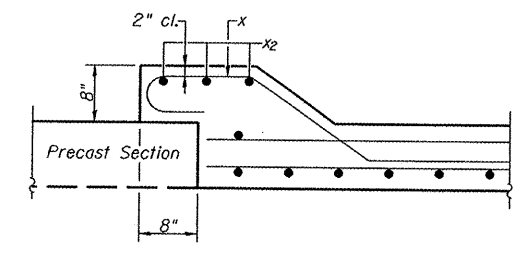
BAR s3



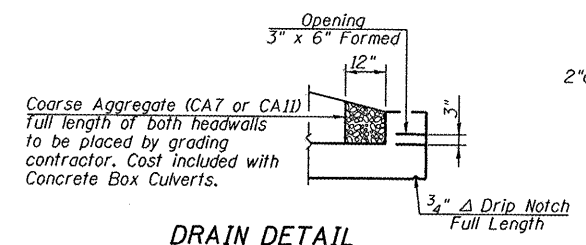
BAR x

BILL OF MATERIAL

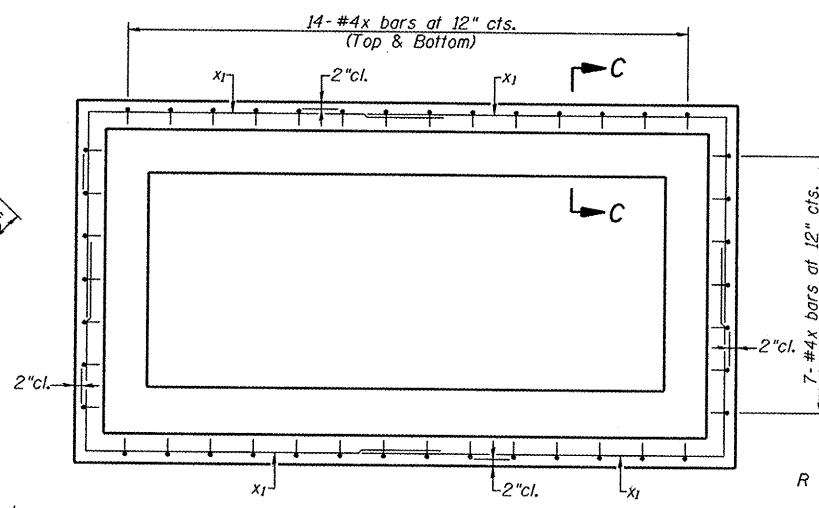
Bar	No.	Size	Length	Shape
a1	22	#8	15'-0"	—
a2	10	#5	13'-2"	—
d1	13	#5	4'-6"	┘
h2	26	#8	5'-8"	—
h3	26	#5	5'-8"	—
h4	12	#5	5'-8"	—
h5	20	#6	8'-0"	—
h6	2	#8	13'-2"	—
h7	2	#6	11'-9"	—
h8	18	#6	11'-9"	—
s3	13	#4	4'-11"	┘
v2	18	#4	6'-3"	—
v3	8	#4	9'-2"	—
x	35	#4	6'-11"	—
x1	12	#4	13'-5"	┘
Concrete Box Culverts			Cu. Yd.	13.5
Reinforcement Bars			Pound	2800



SECTION C-C



DRAIN DETAIL



SECTION B-B

CULVERT DETAILS
(NORTH END SECTION)
OLD U.S. 136 OVER UNNAMED
TRIBUTARY OF SPRING CREEK
F.A.S. ROUTE 1613 - SECTION 23B
SANGAMON COUNTY
STA. 639+70.00
S.N. 084-7132