



**INDEX OF SHEETS**

- 1 COVER SHEET
- 2 INDEX OF SHEETS AND GENERAL NOTES
- 3 SUMMARY OF QUANTITIES
- 4-6 DETAILED LOCATION MAPS

**GENERAL NOTES**

ALL AREAS DISTURBED FOR ANY REASON SHALL BE SEEDED WITH CLASS 2 SEEDING AS DIRECTED BY THE ENGINEER.

MULCH SHALL CONFORM TO SECTION 251 OF THE STANDARD SPECIFICATIONS. MULCH SHALL CONFORM TO METHOD 2, PROCEDURE 2 AS SPECIFIED IN ARTICLE 251.03.

ILLINOIS STATE LAW REQUIRES A 48-HOUR NOTICE BE GIVEN TO ALL UTILITIES BEFORE DIGGING. FIELD MARKING OF FACILITIES MAY BE OBTAINED BY CONTACTING J.U.L.I.E. OR, FOR NON-MEMBERS, BY CONTACTING THE UTILITY COMPANY DIRECTLY. THE FOLLOWING AGENCIES ARE KNOWN TO HAVE FACILITIES WITHIN THE PROJECT AREA.

- AMEREN IP
- AT&T DISTRIBUTION
- AT&T TRANSMISSION
- CENTERPOINT ENERGY PIPELINE SERVICES
- CHARTER COMMUNICATIONS
- CONSOLIDATED TELEPHONE
- ILLINOIS AMERICAN WATER CO.
- LEVEL 3 COMMUNICATIONS
- MCI
- NETWORKS, 360
- QWEST
- SPRINT

CITY OF VENICE - (618) 877-1400  
 METRO EAST SANITARY DISTRICT - (618) 452-9400

MEMBERS OF J.U.L.I.E. (800)-892-0123 ARE INDICATED BY \*.  
 NON-J.U.L.I.E. MEMBERS MUST BE NOTIFIED INDIVIDUALLY.

ALL BASEMENTS OR VOIDS SHALL BE FILLED WITH SUITABLE MATERIAL AS SPECIFIED IN THE STANDARD SPECIFICATION, ARTICLE 1003.01 AS STATED IN THE SPECIAL PROVISIONS.

ALL PUBLIC OR CITY OWNED SIDEWALKS SHALL REMAIN.  
 ANY DAMAGE SHALL BE THE RESPONSIBILITY OF THE CONTRACTOR.

**STANDARDS**

- 701006-02
- 701801-03
- 701901

**BUILDING REMOVAL KEY**

BUILDING NO.	PARCEL NO.	DESCRIPTION
1.	8015005	1080 SQ.FT. ONE-STORY WOOD FRAME BUILDING WITH FULL BASEMENT
2.	8015005	960 SQ.FT. TWO-STORY CONCRETE BLOCK BUILDING
3.	8015005	400 SQ.FT. GARAGE
4.	8015041	780 SQ.FT. ONE-STORY WOOD FRAME BUILDING WITH CRAWL SPACE
5.	8015037	780 SQ.FT. ONE-STORY WOOD FRAME BUILDING WITH CRAWL SPACE
6.	8015022	990 SQ.FT. ONE-STORY WOOD FRAME BUILDING WITH FULL BASEMENT

FILE NAME = r3nAnote_new.dgn	USER NAME = jedbotar	DESIGNED - A. PENICK	REVISED -	<b>STATE OF ILLINOIS DEPARTMENT OF TRANSPORTATION</b>	<b>INDEX OF SHEETS AND GENERAL NOTES</b>	F.A. RTE.	SECTION	COUNTY	TOTAL SHEETS	SHEET NO.
	PLOT SCALE = #SCALE#	CHECKED - T. WELZ	REVISED -			788	520-2-2DM6-1	MADISON	6	2
PLOT DATE = 05/14/2008	DATE - 05-14-08	REVISED -		SCALE:	SHEET NO. 1 OF 1 SHEETS	STA.	TO STA.	CONTRACT NO. 76869		
FED. ROAD DIST. NO. [ILLINOIS] FED. AID PROJECT										

**FINAL PLANS**

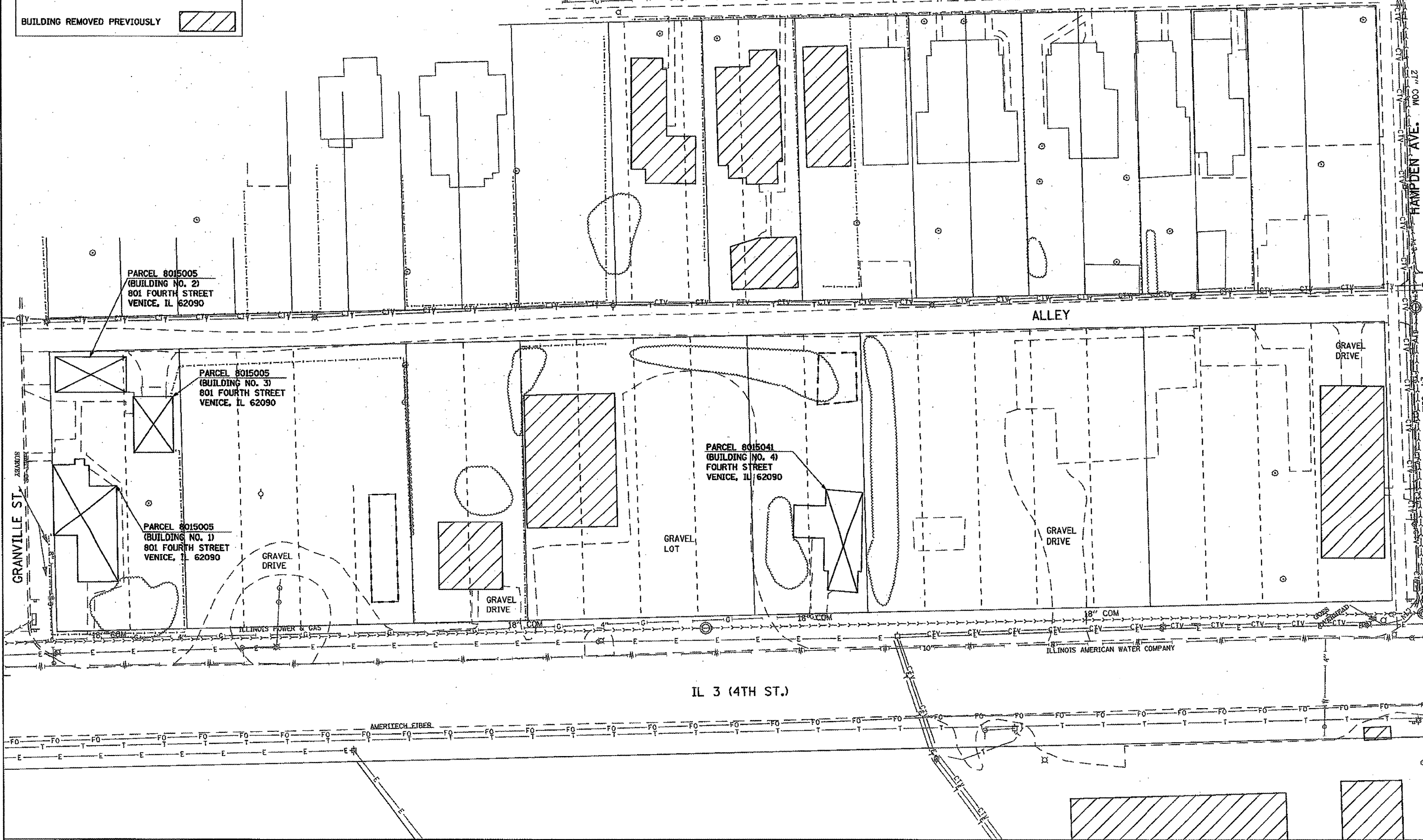
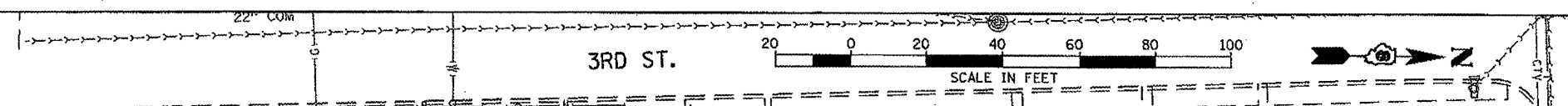
# SUMMARY OF QUANTITIES

SUMMARY OF QUANTITIES				CONSTRUCTION TYPE CODE	
CODE NO	ITEM	UNIT	TOTAL QUANTITY	100% STATE URBAN	
				Y004	
25000200	SEEDING, CLASS 2	ACRE	1	1	
25100115	MULCH, METHOD 2	ACRE	1	1	
67000400	ENGINEER'S FIELD OFFICE, TYPE A	CAL MO	2	2	
67100100	MOBILIZATION	L SUM	1	1	
70102640	TRAFFIC CONTROL AND PROTECTION, STANDARD 701801	L SUM	1	1	
Z0007601	BUILDING REMOVAL NO. 1	L SUM	1	1	
Z0007602	BUILDING REMOVAL NO. 2	L SUM	1	1	
Z0007603	BUILDING REMOVAL NO. 3	L SUM	1	1	
Z0007604	BUILDING REMOVAL NO. 4	L SUM	1	1	
Z0007605	BUILDING REMOVAL NO. 5	L SUM	1	1	
Z0007606	BUILDING REMOVAL NO. 6	L SUM	1	1	
* Z0049801	REMOVAL AND DISPOSAL OF FRIABLE ASBESTOS, BUILDING NO. 1	L SUM	1	1	
* Z0049806	REMOVAL AND DISPOSAL OF FRIABLE ASBESTOS, BUILDING NO. 6	L SUM	1	1	
* Z0049901	REMOVAL AND DISPOSAL OF NON-FRIABLE ASBESTOS, BUILDING NO. 1	L SUM	1	1	
* Z0049902	REMOVAL AND DISPOSAL OF NON-FRIABLE ASBESTOS, BUILDING NO. 2	L SUM	1	1	
* Z0049903	REMOVAL AND DISPOSAL OF NON-FRIABLE ASBESTOS, BUILDING NO. 3	L SUM	1	1	
* Z0049906	REMOVAL AND DISPOSAL OF NON-FRIABLE ASBESTOS, BUILDING NO. 6	L SUM	1	1	
X0324957	BASEMENT WALL REMOVAL, SPECIAL	EACH	1	1	

\* Specialty Items

FILE NAME = r3nAsumeryl_nov.dgn	USER NAME = jedbertov	DESIGNED - A. PENICK	REVISED -	<b>STATE OF ILLINOIS DEPARTMENT OF TRANSPORTATION</b>	<b>SUMMARY OF QUANTITIES</b>		F.A. RTE. 788	SECTION 520-2-20M6-1	COUNTY MADISON	TOTAL SHEETS 6	SHEET NO. 3	
		DRAWN - A. PENICK	REVISED -		SCALE:	SHEET NO. 1 OF 1 SHEETS	STA.	TO STA.	CONTRACT NO. 76869			
		CHECKED - T. WELZ	REVISED -		FED. ROAD DIST. NO. ILLINOIS FED. AID PROJECT							
		DATE - 05-14-08	REVISED -									

<b>LEGEND</b>	
BUILDING REMOVAL	
BUILDING REMOVED PREVIOUSLY	



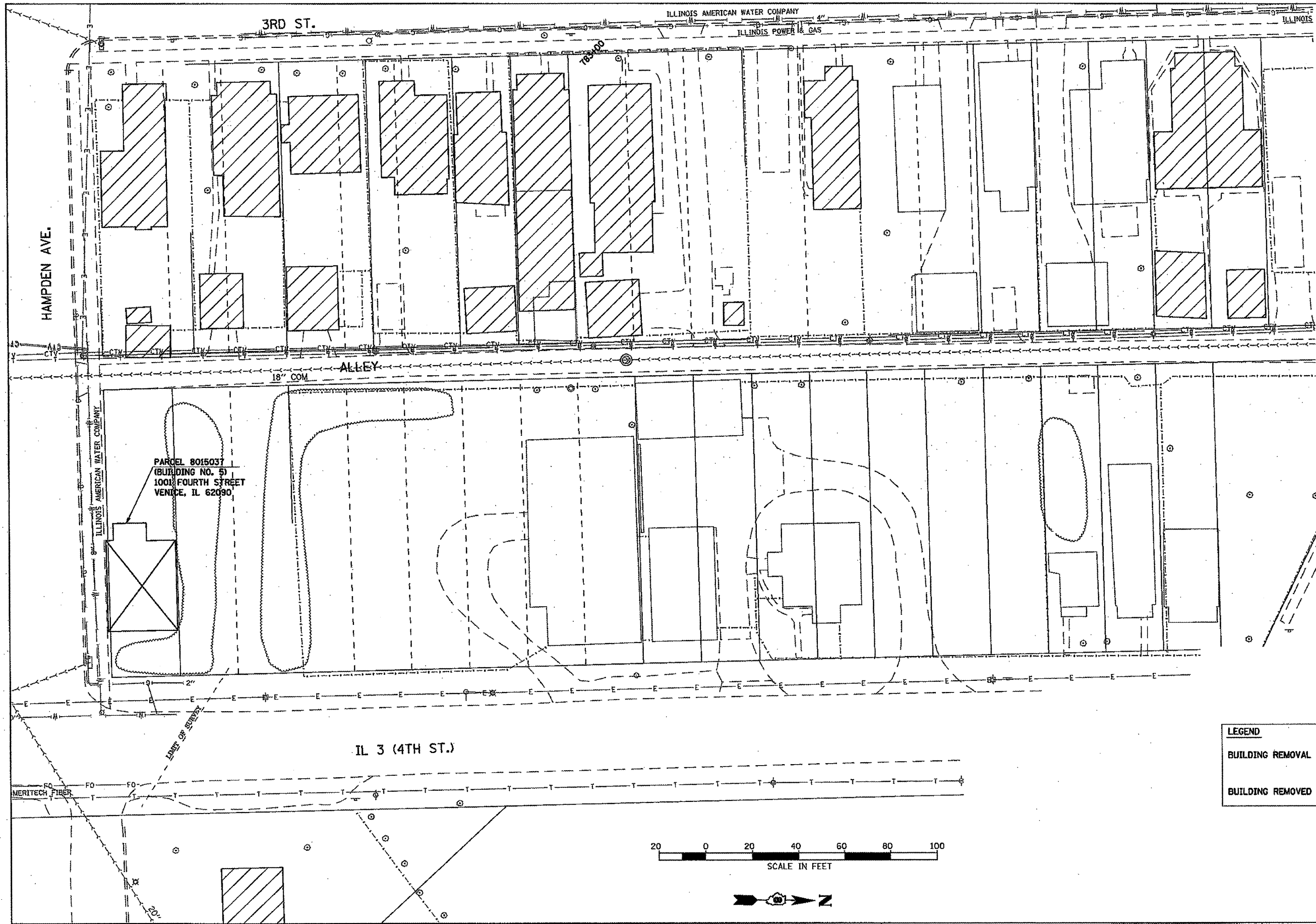
FILE NAME = *3rdam086_new.dgn	USER NAME = ledbatow	DESIGNED - A. PENICK	REVISED -
		DRAWN - A. PENICK	REVISED -
		CHECKED - T. WELZ	REVISED -
		DATE - 05-14-08	REVISED -

**STATE OF ILLINOIS  
DEPARTMENT OF TRANSPORTATION**

<b>DETAILED LOCATION MAP</b>	
SCALE:	SHEET NO. 1 OF 3 SHEETS STA. TO STA.

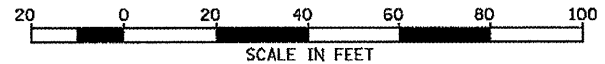
F.A. RTE. 788	SECTION 520-2-2DM6-1	COUNTY MADISON	TOTAL SHEETS 6	SHEET NO. 4
CONTRACT NO. 76869				
FED. ROAD DIST. NO. ILLINOIS FED. AID PROJECT				

**FINAL PLANS**



**LEGEND**

BUILDING REMOVAL	
BUILDING REMOVED PREVIOUSLY	



FILE NAME = r:3rdemo07 nev.dgn	USER NAME = locbetax	DESIGNED - A. PENICK	REVISED -
		DRAWN - A. PENICK	REVISED -
		CHECKED - T. WELZ	REVISED -
		DATE - 05-14-08	REVISED -

**STATE OF ILLINOIS  
DEPARTMENT OF TRANSPORTATION**

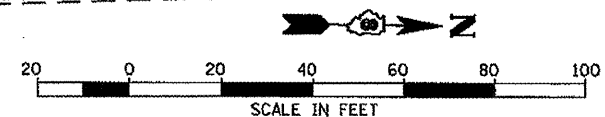
<b>DETAILED LOCATION MAP</b>		F.A. RTE.	SECTION	COUNTY	TOTAL SHEETS	SHEET NO.
SCALE:	SHEET NO. 2 OF 3 SHEETS	788	520-2-ZDM6-1	MADISON	6	5
STA.	TO STA.	CONTRACT NO. T6869				
		FED. ROAD DIST. NO. ILLINOIS FED. AID PROJECT				

**FINAL PLANS**



PARCEL 8015022  
 (BUILDING NO. 6)  
 1021 THIRD STREET  
 VENICE, IL 62090

LEGEND	
BUILDING REMOVAL	
BUILDING REMOVED PREVIOUSLY	



FILE NAME =  
 r3ndemo08\_new.dgn

USER NAME = lsdbeta  
 DESIGNED - A. PENICK  
 DRAWN - A. PENICK  
 CHECKED - T. WELZ  
 DATE - 05-14-08

REVISIONS  
 REVISION NO. | DATE | DESCRIPTION  
 1 | | |  
 2 | | |  
 3 | | |  
 4 | | |

**STATE OF ILLINOIS  
 DEPARTMENT OF TRANSPORTATION**

**DETAILED LOCATION MAP**  
 SCALE: SHEET NO. 3 OF 3 SHEETS STA. TO STA.

F.A. SITE	SECTION	COUNTY	TOTAL SHEETS	SHEET NO.
788	520-2-20M6-1	MADISON	6	6
FED. ROAD DIST. NO.   ILLINOIS FED. AID PROJECT			CONTRACT NO. 76869	

**FINAL PLANS**