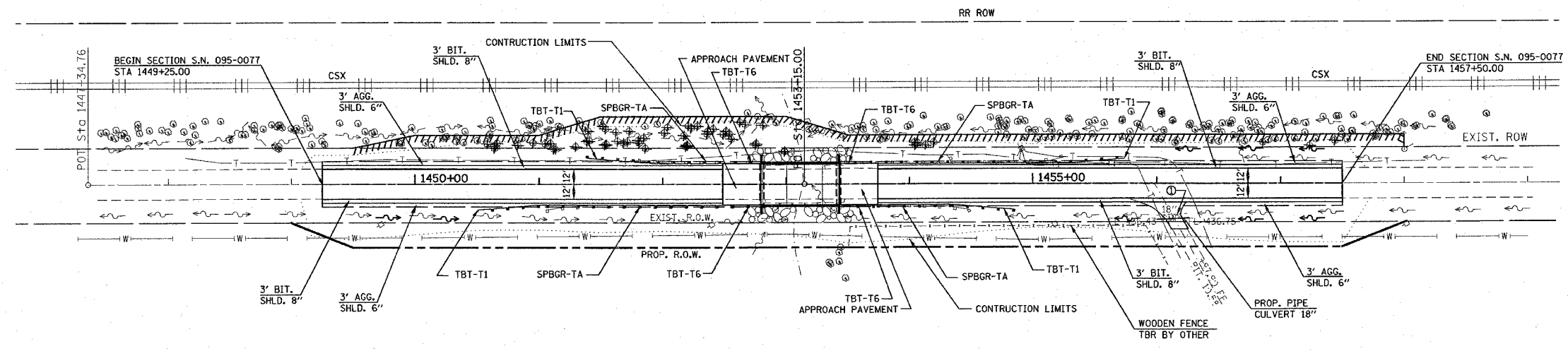
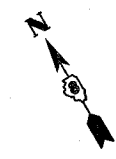
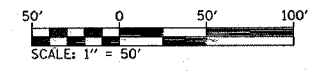


F.A.S. RTE.	SECTION	COUNTY	TOTAL SHEETS	SHEET NO.
1832	5BR-2	WASHINGTON	97	13
STA. 1448+00.00		TO STA. 1459+00.00		
FED. ROAD DIST. NO. ILLINOIS		FED. AID PROJECT		



NOTE: PRAIRIE REMNANT IS LOCATED ON THE NORTH SIDE OF THE PROJECT AND EXTENDS FROM THE EDGE OF SHOULDER TO THE EVANSVILLE WESTERN RAILWAY RAILROAD TRACKS. NO VEHICLES ARE TO BE PARKED ON THE NORTH SIDE OF THE PROJECT.

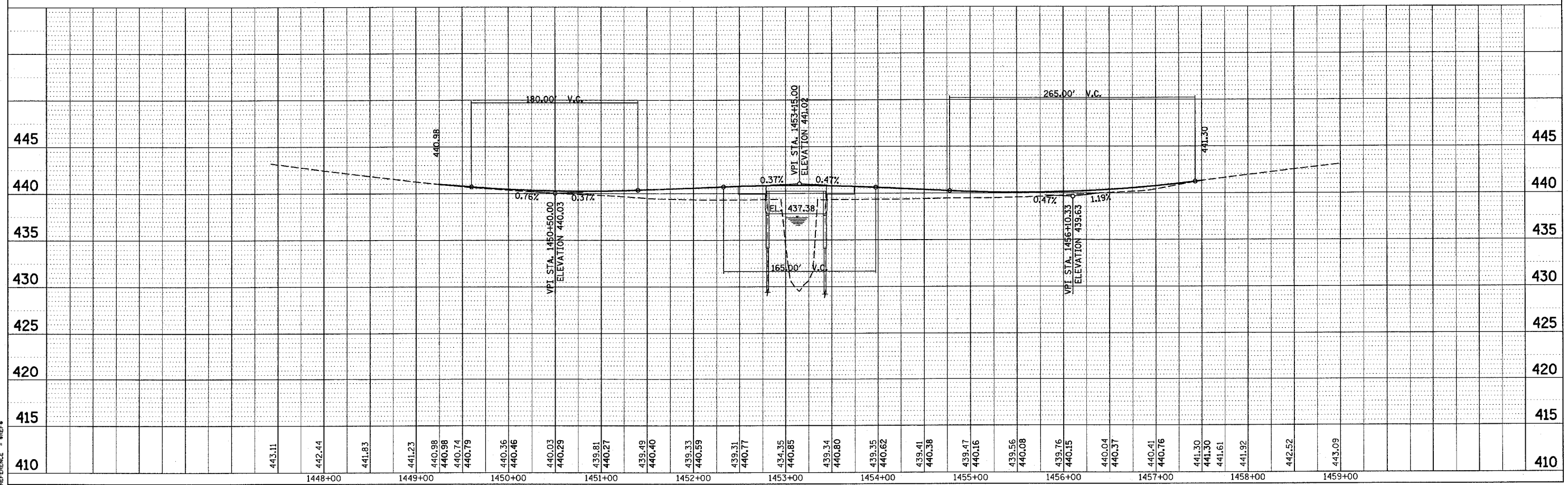
LEGEND
 ○ - 18" CMP TO BE REMOVED
 ⊕ TREE REMOVAL



PLAN	BY	DATE
REVISIONS		
ALIGNED CHECKED		
NOTE BOOK		
NO.		
DATE FILED		
NAME		

PROFILE	BY	DATE
REVISIONS		
GRADES CHECKED		
STRUCTURE NOTATION		
NO.		
DATE		

PLOT DATE = 12/7/2007
 PLOT SCALE = 1" = 40'
 REFERENCE = 08REF



S.N. 095-0077