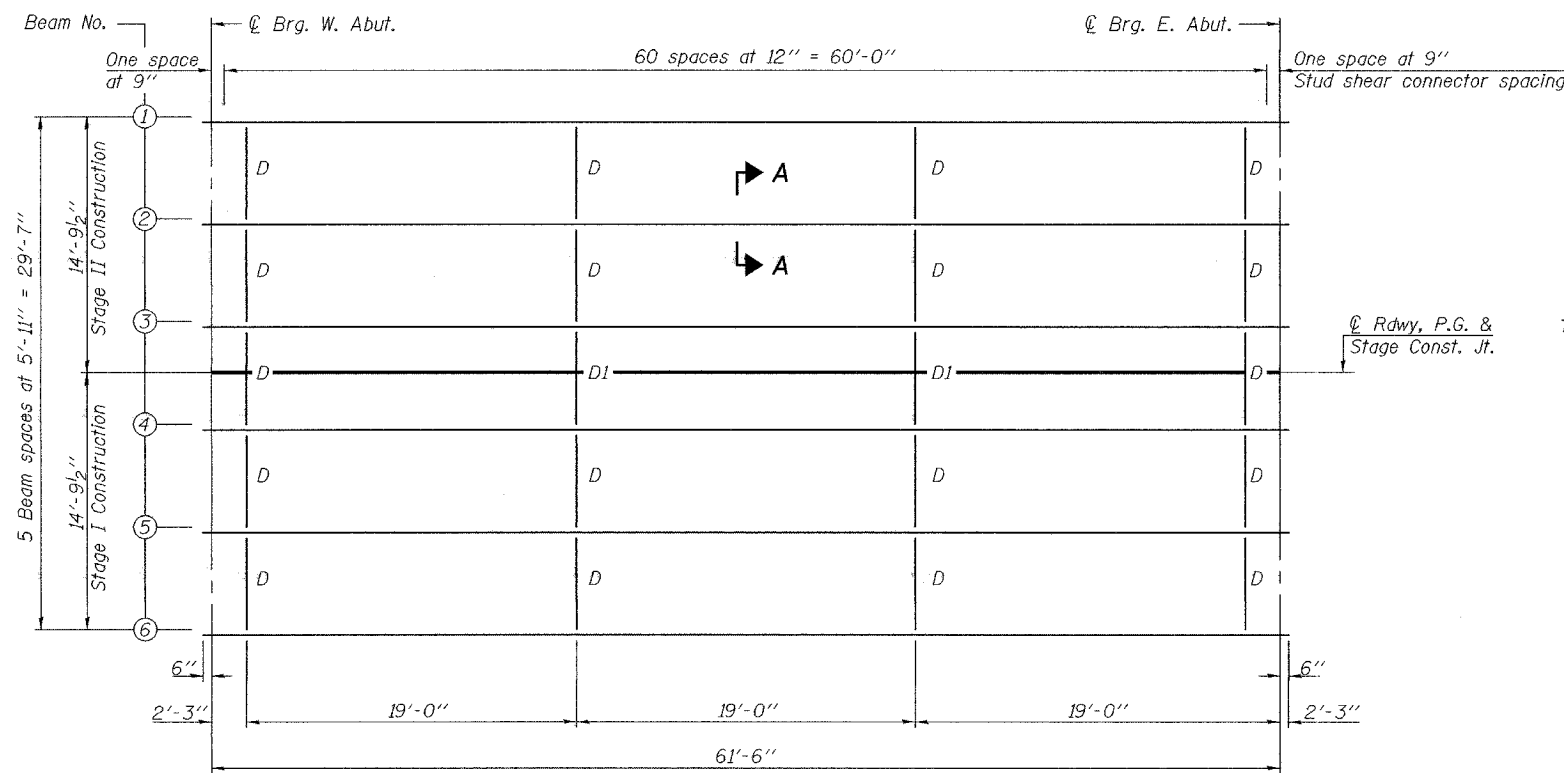


STATE OF ILLINOIS  
DEPARTMENT OF TRANSPORTATION

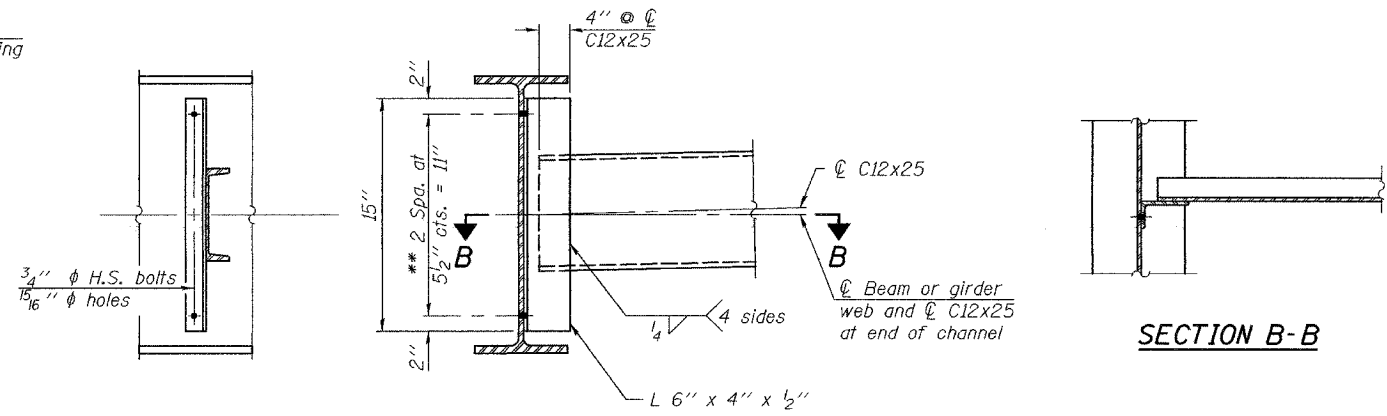
ROUTE NO.	SECTION	COUNTY	SHEET NO.	SHEET NO.
F.A.S. 1832	5BR-2	WASHINGTON	97	31
FED. ROAD DIST. NO. 7	ILLINOIS	FED. AID PROJECT-		

Contract #76949



**FRAMING PLAN**

(All beams are W24x146, NTR, and AASHTO M270 Gr. 50)

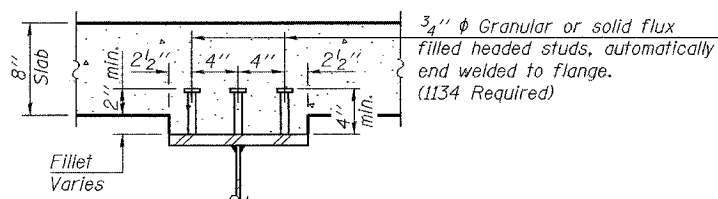


**DIAPHRAGM D**

(18 Required)

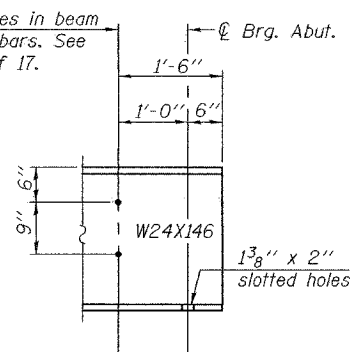
Note:  
Two hardened washers required for each set of oversized holes.  
\*\* 3/4" H.S. bolts, 1 5/16" holes

**SECTION B-B**

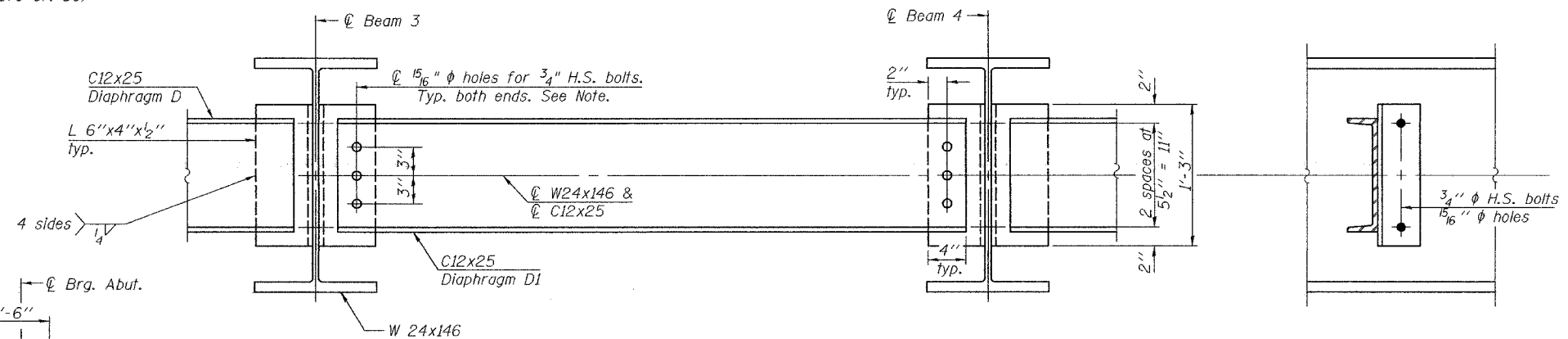


**SECTION A-A**

1" Holes in beam for m2(E) bars. See sheet 10 of 17.



**TYP. END OF BEAM ELEVATION**



**DIAPHRAGM D1**

(2 Required)

Note: Install only the center bolt at each end of Diaphragm D1. The bolts shall be finger tightened prior to deck pour to permit rotation of Diaphragm D1. Install the remaining bolts and fully tighten after stage two deck pour is complete.  
Load carrying components designated "NTR" shall conform to the Supplemental Requirements for Notch Toughness, Zone 2.

DESIGNED	Phillip R. Litchfield
CHECKED	Nicholas R. Barnett
DRAWN	Gregory D. Farmer
CHECKED	PRL/NRB

EXAMINED	Thomas J. Demagala	January 28, 2008
PASSED	Ralph E. Anderson	

**STRUCTURAL STEEL**  
F.A.S. RTE. 1832 - SEC. 5BR-2  
WASHINGTON COUNTY  
STATION 1453+11.50  
STRUCTURE NO. 095-0077