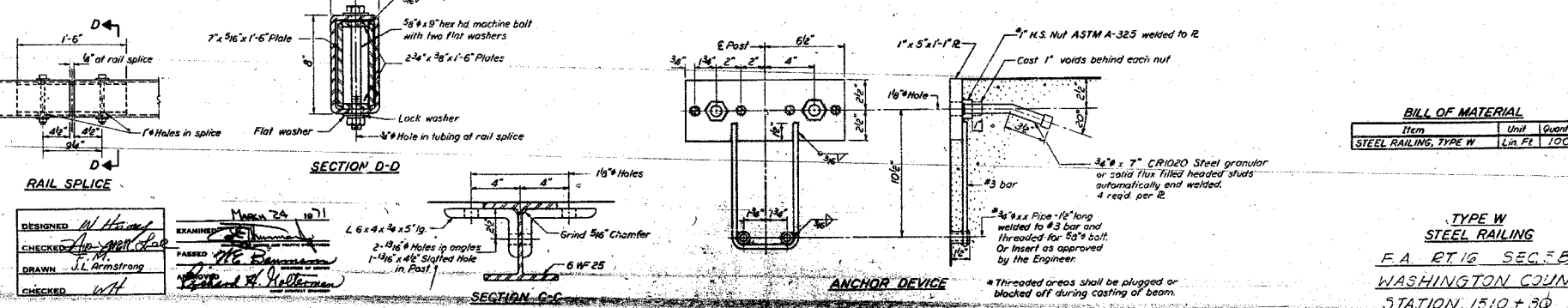
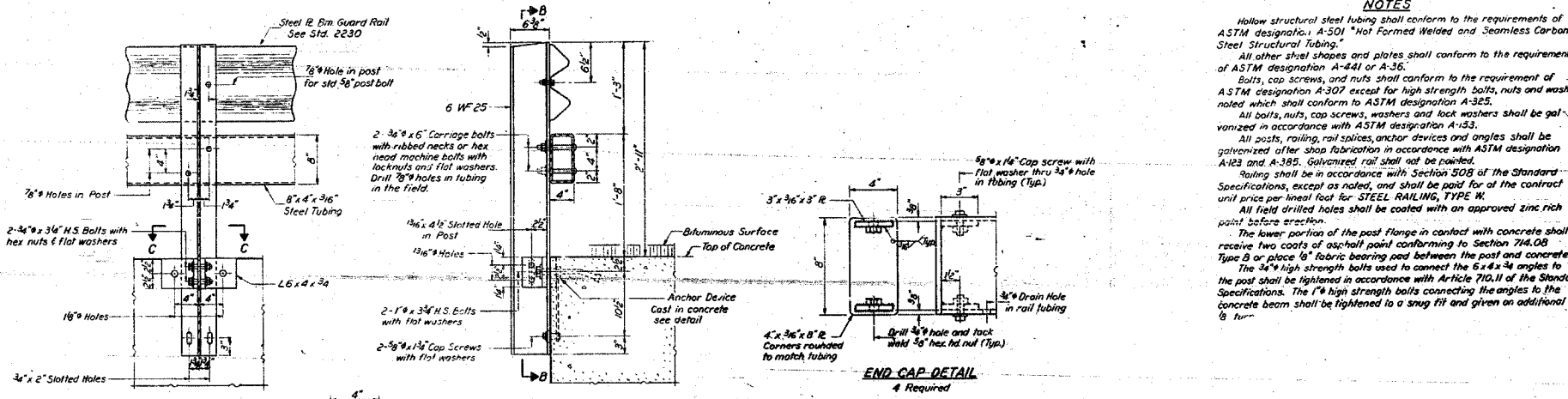
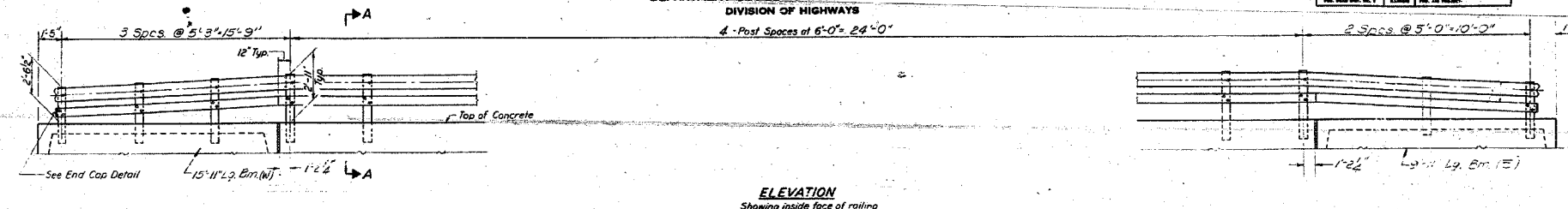


F.A.S. RTE.	SECTION	COUNTY	TOTAL SHEETS	SHEET NO.
1832	5BR-2	WASHINGTON	97	87
STA.		TO STA.		
FED. ROAD DIST. NO.		ILLINOIS FED. AID PROJECT		

STATE OF ILLINOIS
DEPARTMENT OF PUBLIC WORKS & BUILDINGS
DIVISION OF HIGHWAYS

PROJECT NO.	SECTION	COUNTY	TOTAL SHEETS	SHEET NO.
1832	5BR-2	WASHINGTON	97	87



NOTES

Hollow structural steel tubing shall conform to the requirements of ASTM designation A-501 "Not Formed Welded and Seamless Carbon Steel Structural Tubing."

All other steel shapes and plates shall conform to the requirements of ASTM designation A-441 or A-36.

Bolts, cap screws, and nuts shall conform to the requirement of ASTM designation A-307 except for high strength bolts, nuts and washers noted which shall conform to ASTM designation A-325.

All bolts, nuts, cap screws, washers and lock washers shall be galvanized in accordance with ASTM designation A-153.

All posts, railing, rail splices, anchor devices and angles shall be galvanized after shop fabrication in accordance with ASTM designation A-123 and A-385. Galvanized rail shall not be painted.

Railing shall be in accordance with Section 508 of the Standard Specifications, except as noted, and shall be paid for at the contract unit price per lineal foot for STEEL RAILING, TYPE W.

All field drilled holes shall be coated with an approved zinc rich paint before erection.

The lower portion of the post flange in contact with concrete shall receive two coats of asphalt paint conforming to Section 714.08 Type B or place 1/2" fabric bearing pad between the post and concrete.

The 3/8" high strength bolts used to connect the 6 x 4 x 3/16 angles to the post shall be tightened in accordance with Article 710.11 of the Standard Specifications. The 1" high strength bolts connecting the angles to the concrete beam shall be tightened to a snug fit and given an additional 1/8 turn.

BILL OF MATERIAL

Item	Unit	Quantity
STEEL RAILING, TYPE W	Lin. Ft.	100

**TYPE W
STEEL RAILING**
F.A. RT 16 SEC. 5B2
WASHINGTON COUNTY
STATION 1510 + 30

DESIGNED: M. H. ...
CHECKED: J. L. Armstrong
DRAWN: J. L. Armstrong
CHECKED: M. H. ...

R-1

FOR INFORMATION ONLY

S.N. 095-0078

REVISIONS		DATE
NAME		

ILLINOIS DEPARTMENT OF TRANSPORTATION
EXISTING STRUCTURE PLANS

FAS ROUTE 1832
SECTION 5BR-2
WASHINGTON COUNTY

SCALE: VERT. _____
DATE: _____

DRAWN BY _____
CHECKED BY _____

PLOT DATE = 11/29/2007
PLOT SCALE = 1/8" = 1'-0"
REFERENCE = #REF#