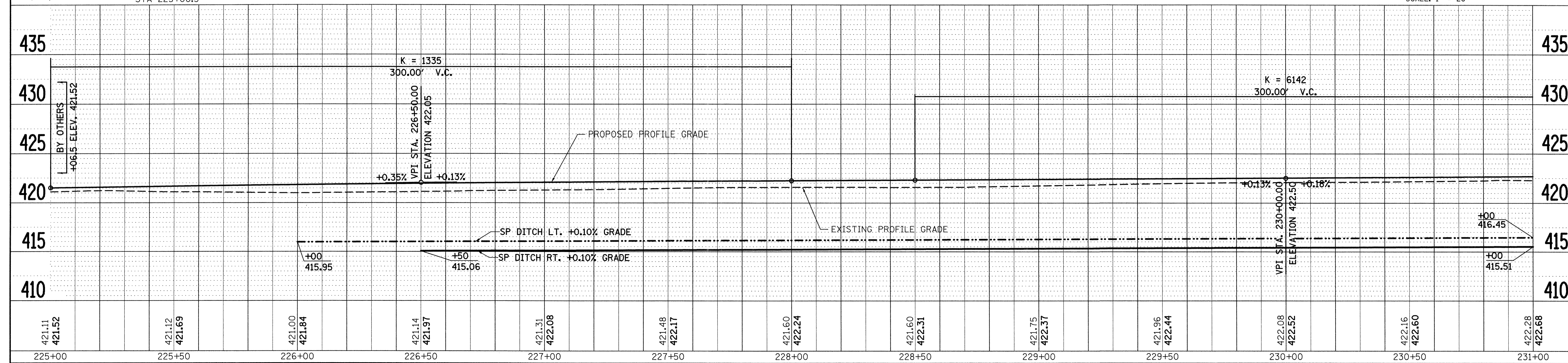
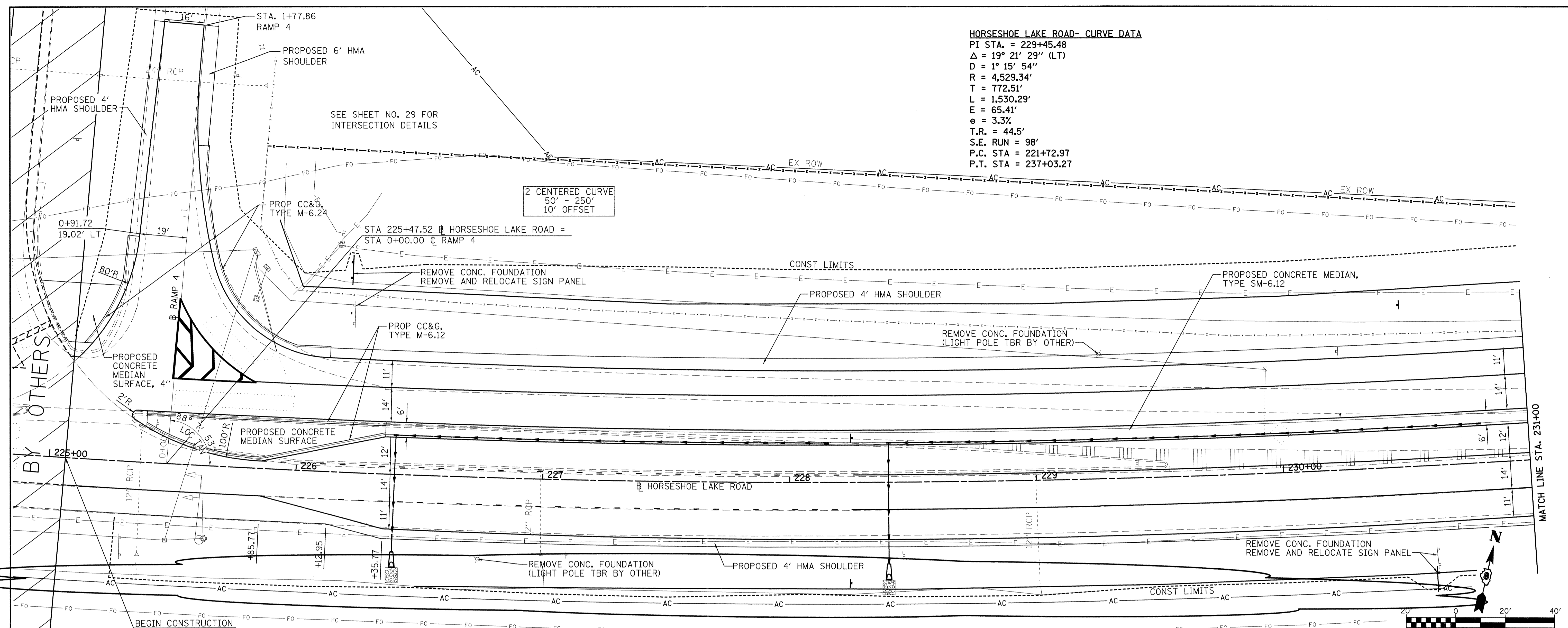


DATE	
BY	
REGISTERED	
PLANNING	
NOTE BOOK	
NO.	
REGISTERED	
PLANNING	
NOTE BOOK	
NO.	

DATE	
BY	
REGISTERED	
PLANNING	
NOTE BOOK	
NO.	
REGISTERED	
PLANNING	
NOTE BOOK	
NO.	

**HORSESHOE LAKE ROAD- CURVE DATA**  
 PI STA. = 229+45.48  
 $\Delta = 19^\circ 21' 29''$  (LT)  
 $D = 1^\circ 15' 54''$   
 $R = 4,529.34'$   
 $T = 772.51'$   
 $L = 1,530.29'$   
 $E = 65.41'$   
 $e = 3.3\%$   
 $T.R. = 44.5'$   
 $S.E. RUN = 98'$   
 $P.C. STA = 221+72.97$   
 $P.T. STA = 237+03.27$



FILE NAME = D:\P\1noa2b.dgn	USER NAME = conoverpj	DESIGNED - DRAWN -	REVISED - 7/14/08 REVISED -	<b>STATE OF ILLINOIS DEPARTMENT OF TRANSPORTATION</b>				<b>HORSESHOE LAKE ROAD PLAN &amp; PROFILE SHEETS</b>				F.A.U. RTE. 9111	SECTION 73-15TS	COUNTY MADISON	TOTAL SHEETS 64	SHEET NO. 13
PLOT SCALE = 20,0000 "/ IN. PLOT DATE = 7/16/2008		CHECKED - DATE -	REVISED - REVISED -									SCALE: 1" = 20'	SHEET NO. 1 OF 3 SHEETS	STA. 225+00.00 TO STA. 231+00.00	FED. ROAD DIST. NO. ILLINOIS FED. AID PROJECT	

Rev. Sheet 7-17-08