

F.A.P. RTE.	SECTION	COUNTY	TOTAL SHEETS	SHEET NO.
885	107BR-1 & 111BR-1	JOHNSON	94	1
FED. ROAD DIST. NO. 9		ILLINOIS	CONTRACT NO. 78030	

**STATE OF ILLINOIS
DEPARTMENT OF TRANSPORTATION
DIVISION OF HIGHWAYS**

PROPOSED HIGHWAY PLANS

**F.A.P. ROUTE 885 (IL. ROUTE 146)
SECTION 107BR-1 & 111BR-1
PROJECT: BHF-0885(038)
JOHNSON COUNTY
C-99-010-08**

**PCC DECK BEAM SUPERSTRUCTURE REPLACEMENT
OVER CACHE RIVER (SECTION 107BR-1)
PCC DECK BEAM SUPERSTRUCTURE REPLACEMENT
OVER BELL POND (SECTION 111BR-1)**

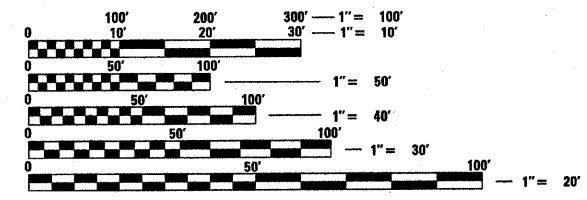
INDEX OF SHEETS

SHEET NO.	DESCRIPTION
1.	COVER SHEET
2.	GENERAL NOTES AND STANDARDS
3.-4.	SUMMARY OF QUANTITIES
5.-6.	SCHEDULES OF QUANTITIES (SECTION 107BR-1)
7.-8.	SCHEDULES OF QUANTITIES (SECTION 111BR-1)
9.	TYPICAL CROSS SECTIONS (SECTION 107BR-1)
10.	TYPICAL CROSS SECTIONS (SECTION 111BR-1)
11.	PLAN AND PROFILE (SECTION 107BR-1)
12.	STAGE I CONSTRUCTION (SECTION 107BR-1)
13.	STAGE II CONSTRUCTION (SECTION 107BR-1)
14.	EROSION CONTROL PLAN (SECTION 107BR-1)
15.	PAVEMENT MARKINGS (SECTION 107BR-1)
16.	PLAN AND PROFILE (SECTION 111BR-1)
17.	STAGE I CONSTRUCTION (SECTION 111BR-1)
18.	STAGE II CONSTRUCTION (SECTION 111BR-1)
19.	EROSION CONTROL PLAN (SECTION 111BR-1)
20.	PAVEMENT MARKINGS (SECTION 111BR-1)
21.	WIDE LOAD DETOUR
22.-40.	STRUCTURE PLANS (SECTION 107BR-1)
41.-59.	EXISTING STRUCTURE PLANS (SECTION 107BR-1)
60.-75.	STRUCTURE PLANS (SECTION 111BR-1)
76.-85.	EXISTING STRUCTURE PLANS (SECTION 111BR-1)
86.-88.	STATION CROSS SECTIONS (SECTION 107BR-1)
89.-94.	STATION CROSS SECTIONS (SECTION 111BR-1)



SEC. 107BR-1 & SEC. 111BR-1		
FUNCTIONAL CLASSIFICATION:	OTHER PRINCIPAL ARTERIAL (NON URBAN)	
DESIGN SPEED:	55 MPH	
POSTED SPEED:	55 MPH	
ADT:	SEC. 107BR-1	SEC. 111BR-1
PV:	2450 (2005)	1600 (2005)
TRUCKS:	81%	89%
	19%	11%

PROJECT ENGINEER: DAVID PICHE (618) 351-5227



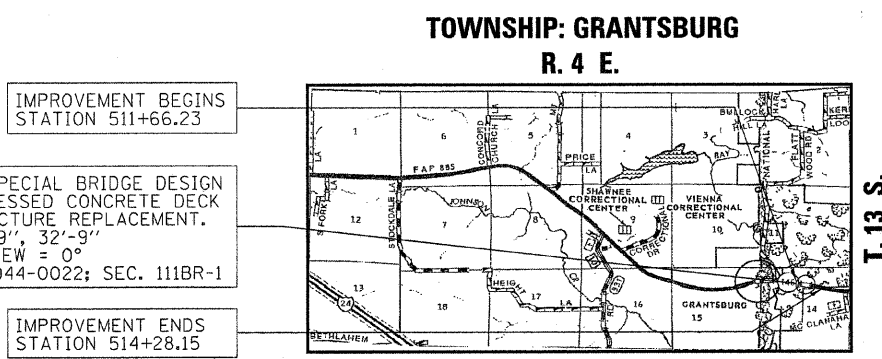
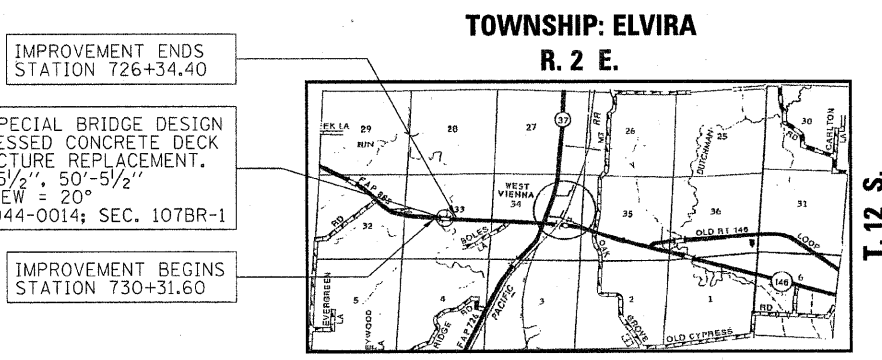
FULL SIZE PLANS HAVE BEEN PREPARED USING STANDARD ENGINEERING SCALES. REDUCED SIZED PLANS WILL NOT CONFORM TO STANDARD SCALES. IN MAKING MEASUREMENTS ON REDUCED PLANS, THE ABOVE SCALES MAY BE USED.

J.U.L.I.E.
JOINT UTILITY LOCATION INFORMATION FOR EXCAVATION
1-800-892-0123
OR 811

**PROJECT ENGINEER
PROJECT MANAGER**

CONTRACT NO. 78030

HLR HAMPTON, LENZINI & RENWICK, INC.
CIVIL & STRUCTURAL ENGINEERS
LAND SURVEYORS



LOCATION MAPS
APPROXIMATE SCALE: 0 1 MILE

GROSS AND NET LENGTH OF SECTION 107BR-1	=	397.20 FT. = 0.075 MI.
BRIDGE LENGTH SN 044-0014	=	385.20 FT. = 0.073 MI.
GROSS AND NET LENGTH OF SECTION 111BR-1	=	261.92 FT. = 0.050 MI.
NET ROADWAY LENGTH	=	261.95 FT. = 0.050 MI.
BRIDGE LENGTH SN 044-0022	=	107.50 FT. = 0.020 MI.



Louis F. Stauder 4/24/2008
ILLINOIS PROFESSIONAL LICENSE NO. 34227
(EXPIRATION DATE: 11/30/09)

**DESIGN DESIGNATION
N.A.**

STATE OF ILLINOIS
DEPARTMENT OF TRANSPORTATION
DIVISION OF HIGHWAYS

SUBMITTED May 1, 20 08
Mark C. Frame
DEPUTY DIRECTOR OF HIGHWAYS, REGION ENGINEER

June 27, 20 08
Erin E. Harnett
INTERIM ENGINEER OF DESIGN AND ENVIRONMENT

June 27, 20 08
Christine M. Reed
DIRECTOR OF HIGHWAYS, CHIEF ENGINEER

**PRINTED BY THE AUTHORITY
OF THE STATE OF ILLINOIS**