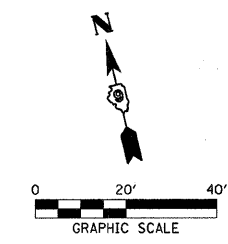


| ROUTE NO.           | SECTION | COUNTY   | TOTAL SHEETS       | SHEET NO. |
|---------------------|---------|----------|--------------------|-----------|
| F.A.P. 885          | 111BR-1 | JOHNSON  | 94                 | 18        |
| FED. ROAD DIST. NO. |         | ILLINOIS | CONTRACT NO. 78030 |           |

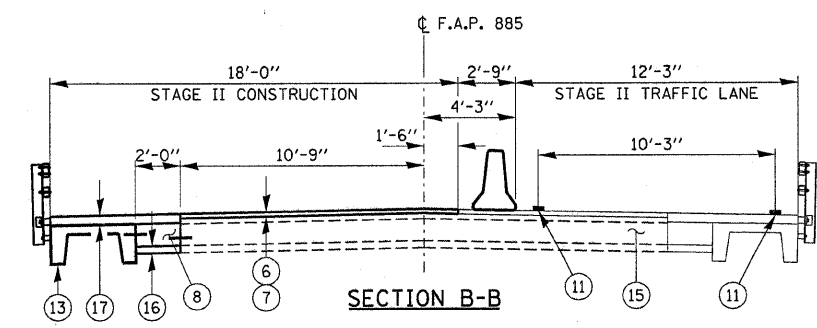
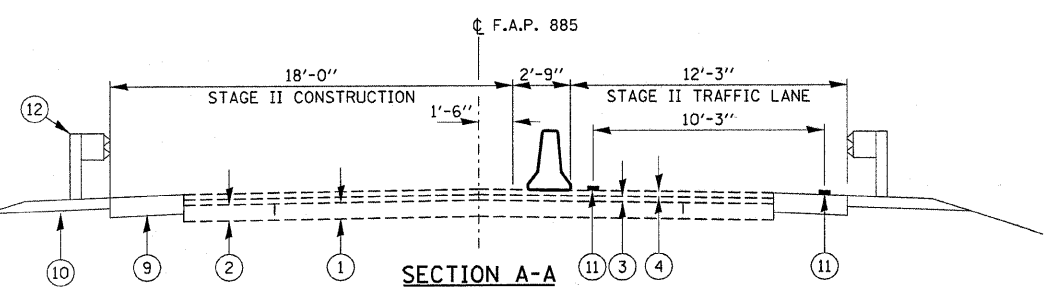
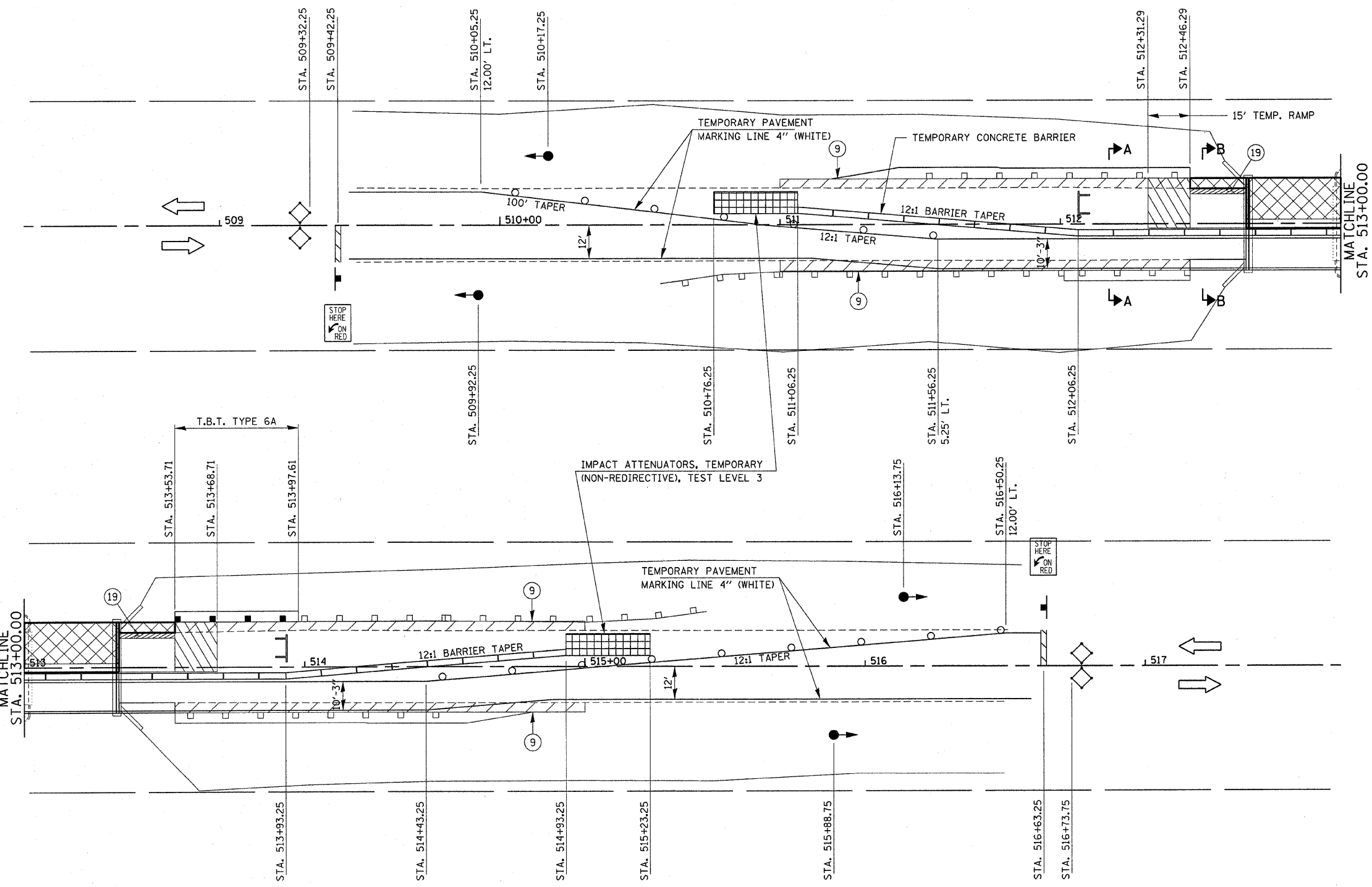
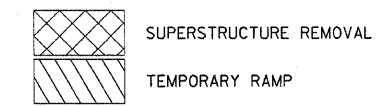
**GENERAL NOTES**

1. TRAFFIC CONTROL SHALL BE ERCTED AS SHOWN AND ACCORDING TO "TRAFFIC CONTROL AND PROTECTION, STANDARD 701321."
2. SEE SPECIAL PROVISIONS FOR ADDITIONAL TRAFFIC CONTROL REQUIREMENTS.
3. COORDINATE LOCATION OF SIGNALS WITH FINAL WORK AS DIRECTED BY THE ENGINEER
4. CONSTRUCT TEMPORARY RUMBLE STRIPS AT LOCATIONS SHOWN ON STANDARD 701321.



**LEGEND**

- ① EXISTING CONCRETE PAVEMENT
- ② EXISTING BASE COURSE WIDENING 9"
- ③ EXISTING H.M.A. BINDER COURSE 1.5" MIN.
- ④ EXISTING H.M.A. SURFACE COURSE 1.5"
- ⑤ EXISTING AGGREGATE SHOULDERS TYPE A, 6"
- ⑥ LEVELING BINDER (MACHINE METHOD), N90
- ⑦ HOT-MIX ASPHALT SURFACE COURSE, MIX "C", N90 (1 1/2")
- ⑧ PCC BASE COURSE 13"
- ⑨ HMA BASE COURSE WIDENING 10 3/4"
- ⑩ AGGREGATE SHOULDERS TYPE A 6"
- ⑪ TEMPORARY PAVEMENT MARKINGS
- ⑫ TRAFFIC BARRIER TERMINAL, TYPE 6A
- ⑬ PROPOSED PRECAST SLAB
- ⑭ EXISTING PRECAST SLAB
- ⑮ EXISTING BRIDGE APPROACH PAVEMENT
- ⑯ SUB-BASE GRANULAR MATERIAL TYPE A 4" (COST INCLUDED WITH PCC BASE COURSE 13")
- ⑰ CONCRETE WEARING SURFACE, 5"
- ⑱ EXISTING GUARDRAIL
- ⑲ BRIDGE APPROACH PAVEMENT REMOVAL



**HAMPTON, LENZINI & RENWICK, INC.**  
 CIVIL & STRUCTURAL ENGINEERS  
 LAND SURVEYORS  
 3085 STEVENSON DRIVE, SUITE 201  
 SPRINGFIELD, ILLINOIS 62703  
 (217) 546-3400

**HLR**

ELGIN • SPRINGFIELD

PROJECT NUMBER: 12-52-0007-1    DATE: 04/21/08  
 DESIGNED: L.F.S.    CHECKED: S.W.M.    DRAWN: D.T.M.

**STAGE II CONSTRUCTION**  
 IL. ROUTE 146 OVER BELL POND  
 F.A.P. ROUTE 885 / SECTION 111BR-1  
 JOHNSON COUNTY  
 STATION 513+00  
 STRUCTURE NO. 044-0022