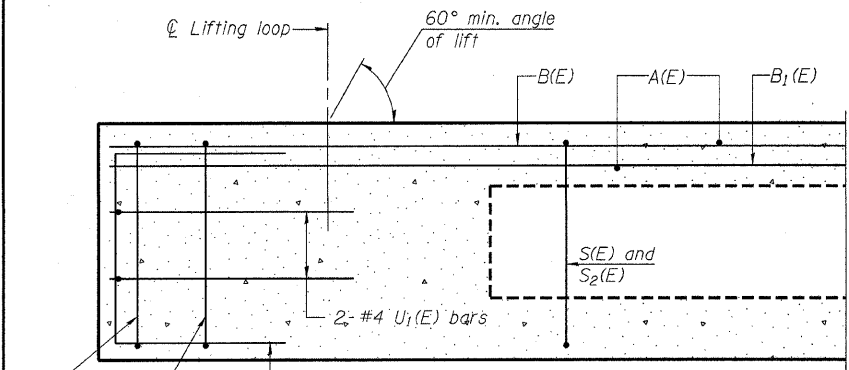


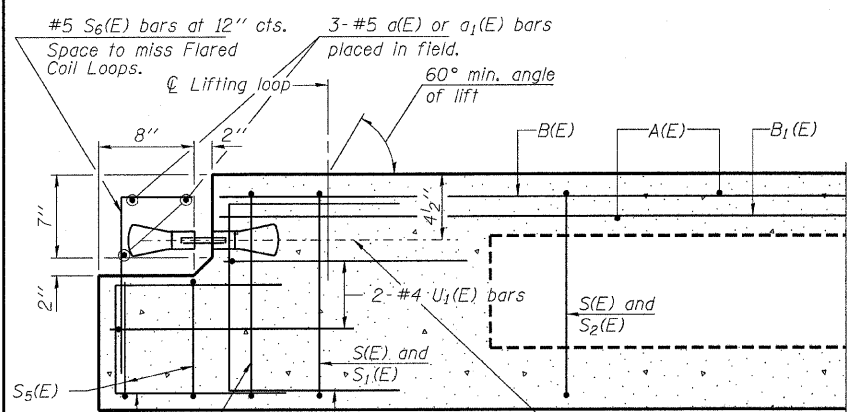
STATE OF ILLINOIS
DEPARTMENT OF TRANSPORTATION

ROUTE NO.	SECTION	COUNTY	TOTAL SHEETS	SHEET	SHEET NO. 6
F.A.P. 885	107BR-1	Johnson	94	27	19 SHEETS
FED. ROAD DIST. NO. 7	ILLINOIS	FED. AID PROJECT-			

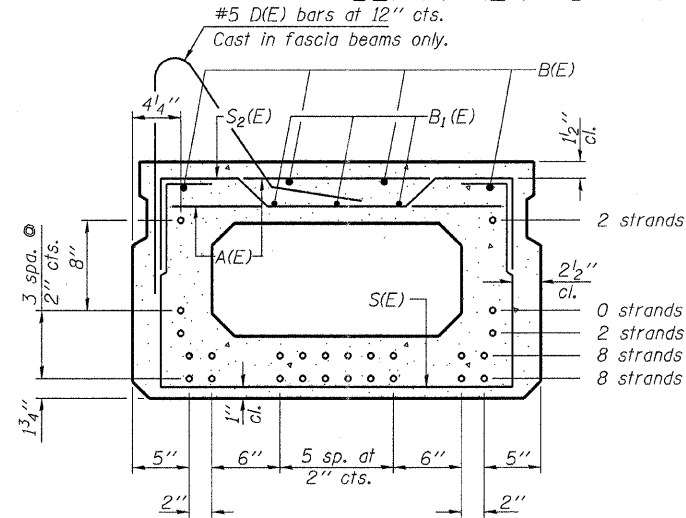
Contract #78030



SECTION D-D



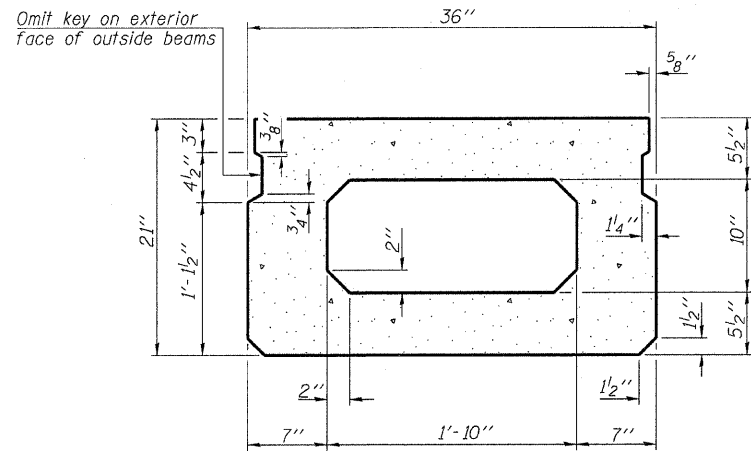
SECTION C-C



SECTION A-A

(Showing reinforcement and permissible strand locations)

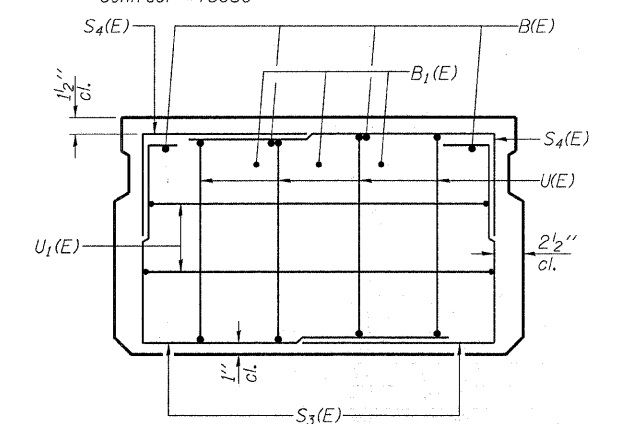
Note: Place the number of strands specified in each row symmetrically about the centerline of beam in the permissible strand locations shown.



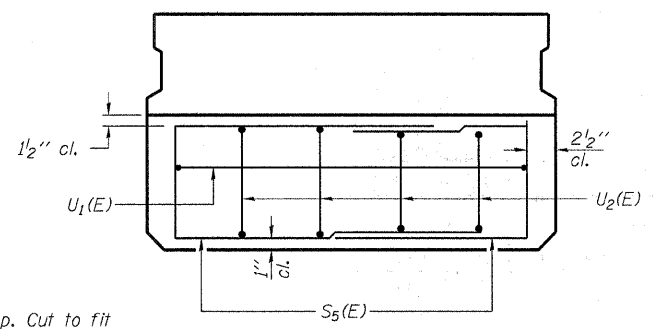
SECTION A-A

(Showing dimensions)

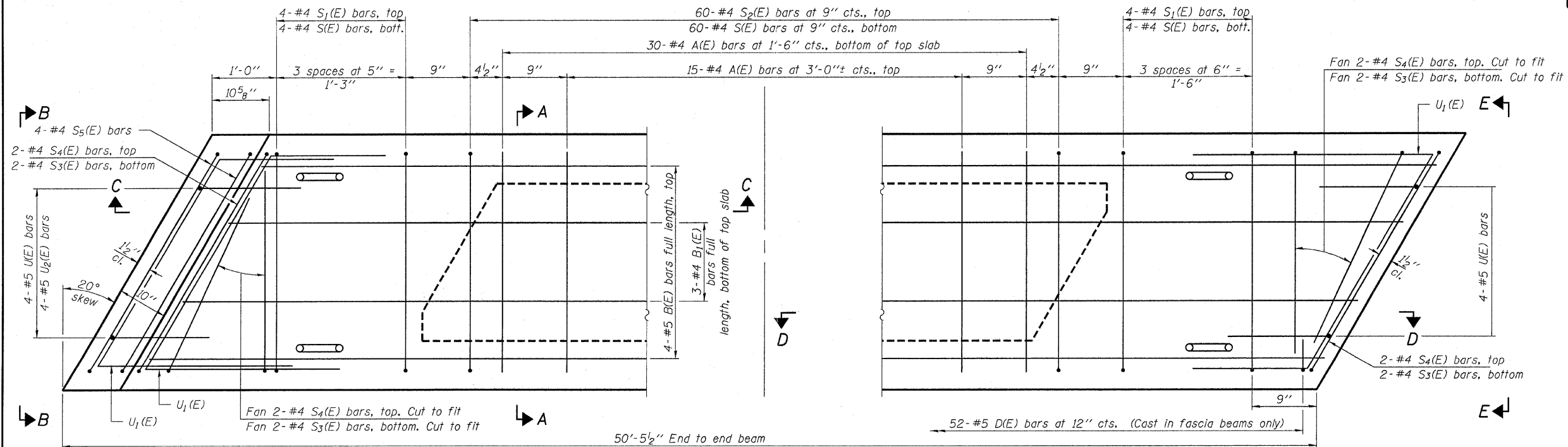
MIN. BAR LAP
#4 bar = 1'-8"



VIEW E-E



VIEW B-B



PLAN VIEW

Note: Spacing of S(E) and S2(E) bars may be adjusted up to 4" in the immediate area of the transverse tie diaphragms to miss the block outs for the transverse ties.

BAR LIST
ONE BEAM ONLY
(For information only)

Bar	No.	Size	Length	Shape
A(E)	46	#4	2'-7"	—
B(E)	4	#5	49'-3"	—
B1(E)	3	#4	49'-3"	—
D(E)	52	#5	3'-9"	⌒
S(E)	68	#4	6'-5"	—
S1(E)	8	#4	5'-7"	⌒
S2(E)	60	#4	5'-10"	⌒
S3(E)	8	#4	4'-3"	⌒
S4(E)	8	#4	3'-10"	⌒
S5(E)	4	#4	3'-1"	⌒
S6(E)	4	#5	2'-0"	⌒
U(E)	8	#5	4'-0"	⌒
U1(E)	4	#4	6'-1"	⌒
U2(E)	4	#5	3'-3"	⌒

Note: See sheet 5 & 7 of 19 for additional details and Bill of Material.
D(E) bars only included in fascia beams.

HAMPTON, LENZINI & RENWICK, INC.
CIVIL & STRUCTURAL ENGINEERS
LAND SURVEYORS

HLR

3085 STEVENSON DRIVE, SUITE 201
SPRINGFIELD, ILLINOIS 62703
(217) 546-3400

ELGIN • SPRINGFIELD

PROJECT NUMBER: 12-52-0007-1 DATE: 04/02/08
DESIGNED: S.M.S. CHECKED: M.D.C. DRAWN: D.T.M.

SUPERSTRUCTURE DETAILS
IL. ROUTE 146 OVER CACHE RIVER
F.A.P. ROUTE 885 / SECTION 107BR-1
JOHNSON COUNTY
STATION 727+23.00
STRUCTURE NO. 044-0014