

STATE OF ILLINOIS  
DEPARTMENT OF TRANSPORTATION

|                       |          |                  |              |           |             |
|-----------------------|----------|------------------|--------------|-----------|-------------|
| ROUTE NO.             | SECTION  | COUNTY           | TOTAL SHEETS | SHEET NO. | SHEET NO. 9 |
| F.A.P. 885            | 107BR-1  | Johnson          | 94           | 30        | 19 SHEETS   |
| FED. ROAD DIST. NO. 7 | ILLINOIS | FED. AID PROJECT |              |           |             |

Contract #78030

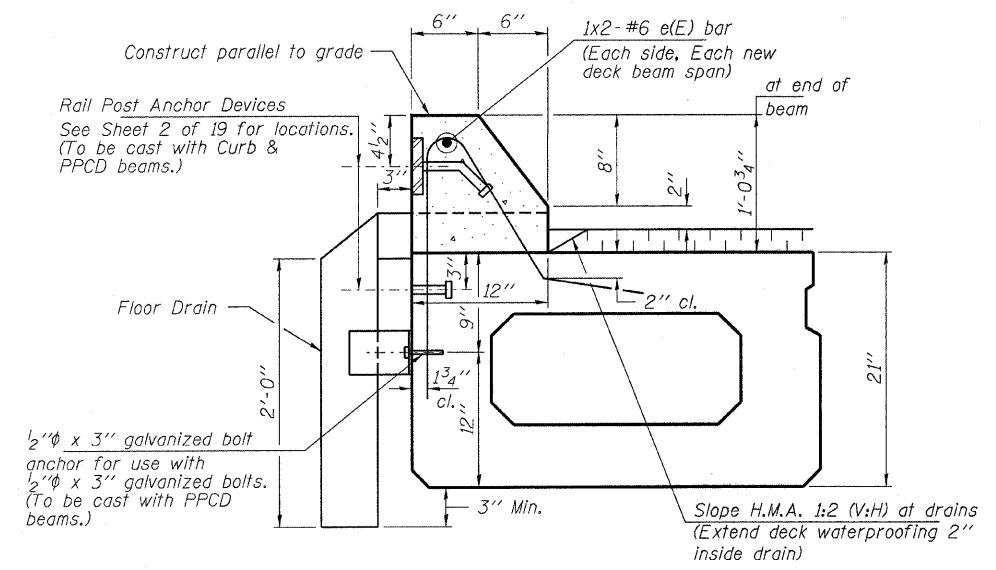
**NOTES**

Anchor bolts shall be ASTM F1554 all-thread (or an Engineer approved alternate material) of the grade(s) and diameter(s), specified. ASTM A307 Grade C anchor bolts may be used in lieu of ASTM F1554 Grade 36 (Fy=36ksi). The corresponding specified grade of AASHTO M314 anchor bolts may be used in lieu of ASTM F1554.

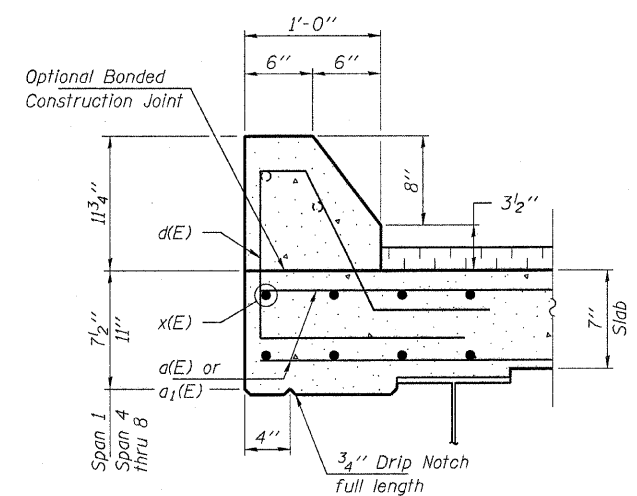
Anchor bolts for side retainers will be installed in holes drilled after members are in place.

See Sheet 2 of 19 for drain locations.

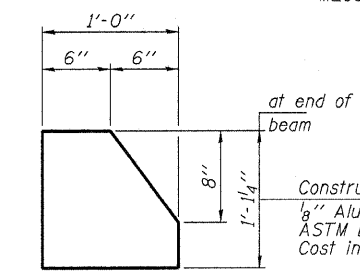
Drain assembly shall be galvanized according to AASHTO M111 or M232. Bolts and anchor assembly shall be galvanized according to AASHTO M298 Class 50.



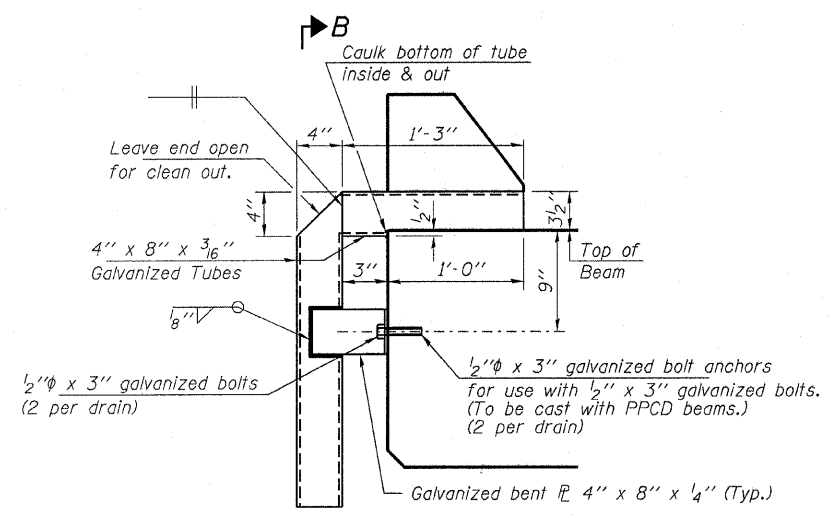
**CURB DETAIL - DECK BEAMS**  
(Curbs shall be poured in the field.)



**CURB DETAIL - DECK REPAIR**

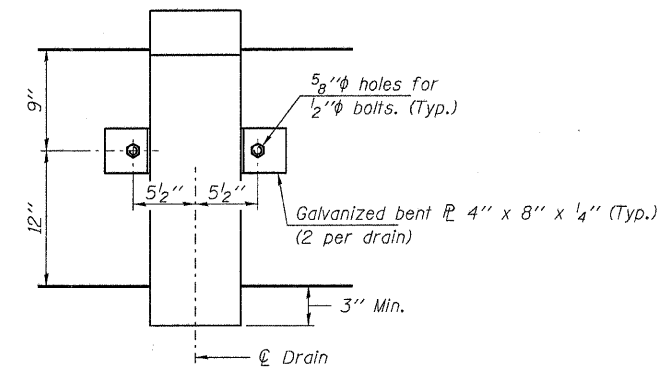


**CURB JOINT DETAIL**  
(2-Required)

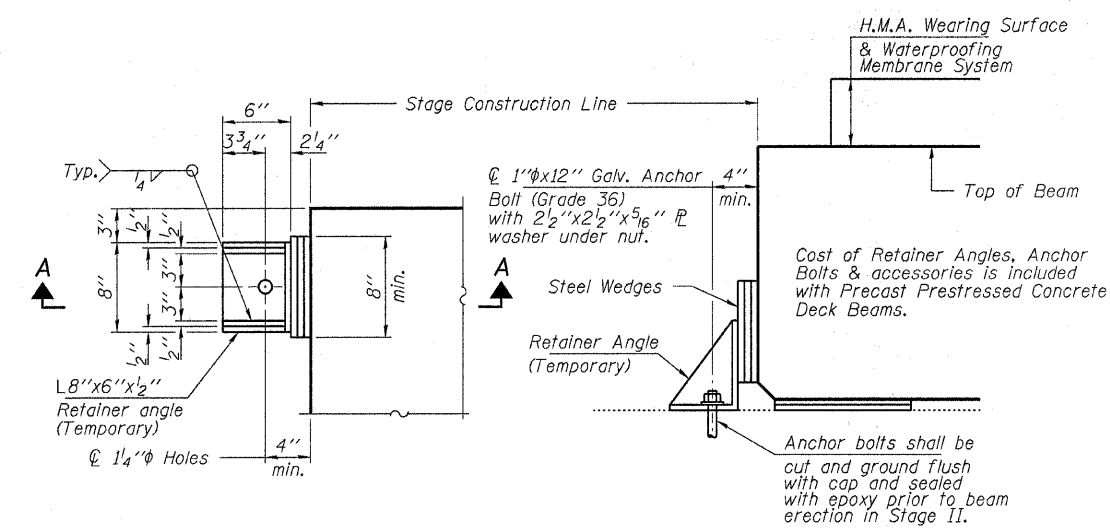


**FLOOR DRAIN DETAIL**

Note: The cost of all drain assembly components shall be included in the cost of Floor Drains.



**SECTION B-B**



**PLAN**  
**SECTION A-A**  
**BEAM RETAINER DETAILS**  
**AT STAGE CONSTRUCTION LINE**  
(2 Required)

**HAMPTON, LENZINI & RENWICK, INC.**  
CIVIL & STRUCTURAL ENGINEERS  
LAND SURVEYORS  
3085 STEVENSON DRIVE, SUITE 201  
SPRINGFIELD, ILLINOIS 62703  
(217) 546-3400

**ELGIN • SPRINGFIELD**

PROJECT NUMBER: 12-52-0007-1 DATE: 04/02/08  
DESIGNED: S.M.S. CHECKED: M.D.C. DRAWN: D.T.M.

**SUPERSTRUCTURE DETAILS**  
**IL. ROUTE 146 OVER CACHE RIVER**  
**F.A.P. ROUTE 885 / SECTION 107BR-1**  
**JOHNSON COUNTY**  
**STATION 727+23.00**  
**STRUCTURE NO. 044-0014**