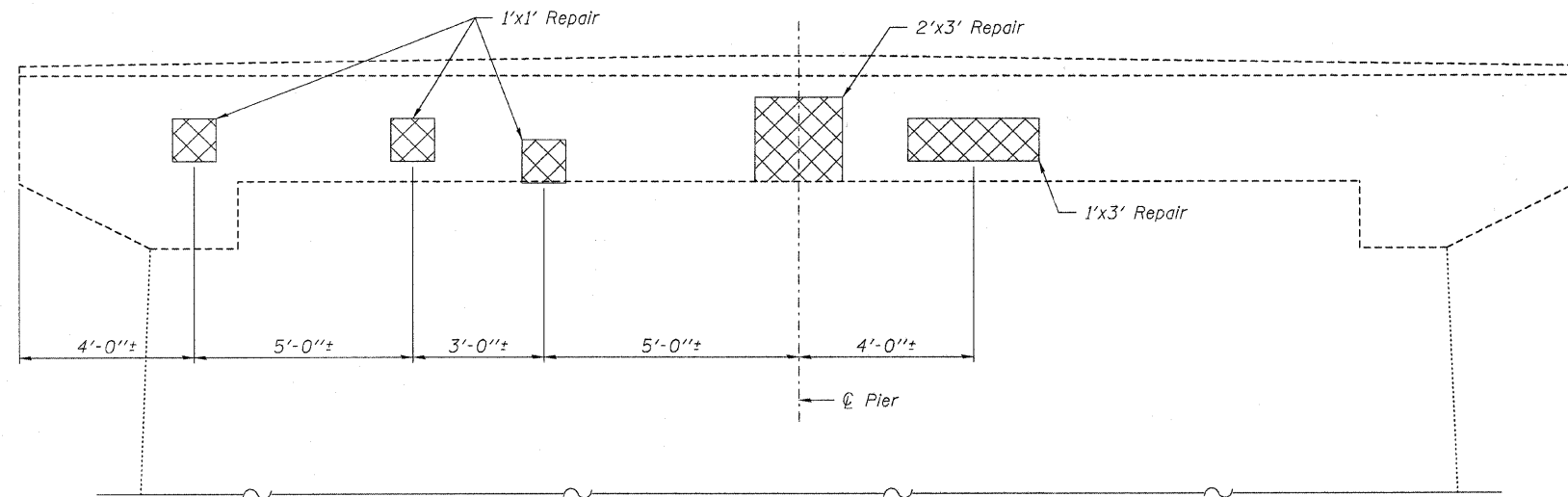


STATE OF ILLINOIS
DEPARTMENT OF TRANSPORTATION

ROUTE NO.	SECTION	COUNTY	TOTAL SHEETS	SHEET NO.	SHEET NO. 15 19 SHEETS
F.A.P. 885	107BR-1	Johnson	94	36	
FED. ROAD DIST. NO. 7		ILLINOIS FED. AID PROJECT			

Contract #78030



NOTES

See Sheet 8 of 19 for Sections Thru Pier views and additional details.

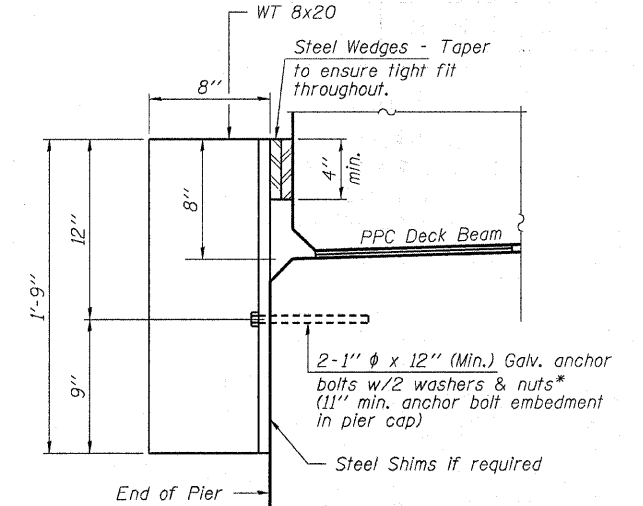
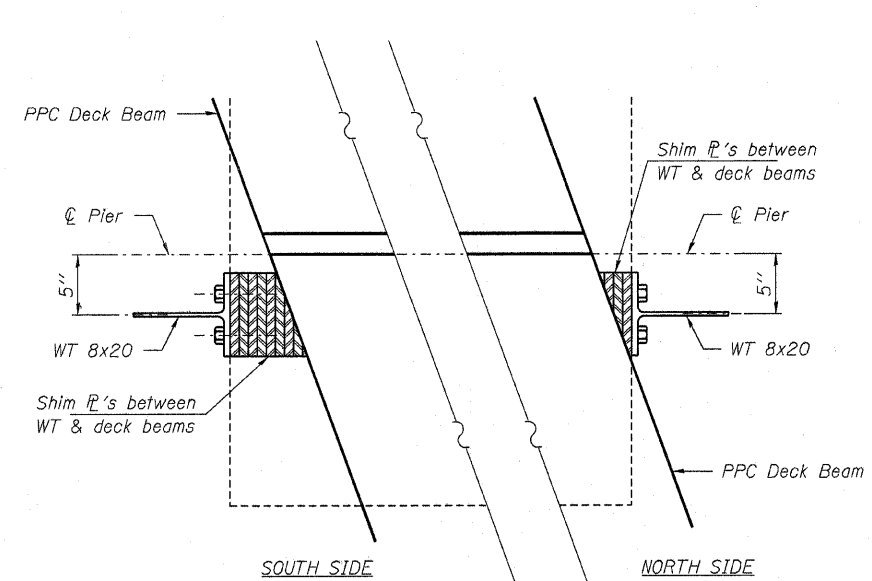
The existing pier bearing seat is to be inspected by the Engineer after deck beam removal. Deteriorated concrete areas shall be repaired if deemed necessary using Structural Repair of Concrete (Depth equal to or less than 5"). Concrete Sealer shall be applied to Concrete Repair areas. Cost included in Concrete Repair item.

Pier Structural Repair of Concrete areas and Crack Repair lengths are estimated from a 10/24/2007 inspection.

REPAIR LEGEND

Requires Structural Repair of Concrete (Depth Equal to or less than 5")

Requires Epoxy Crack Injection



EXTERIOR BEAM - RETAINER

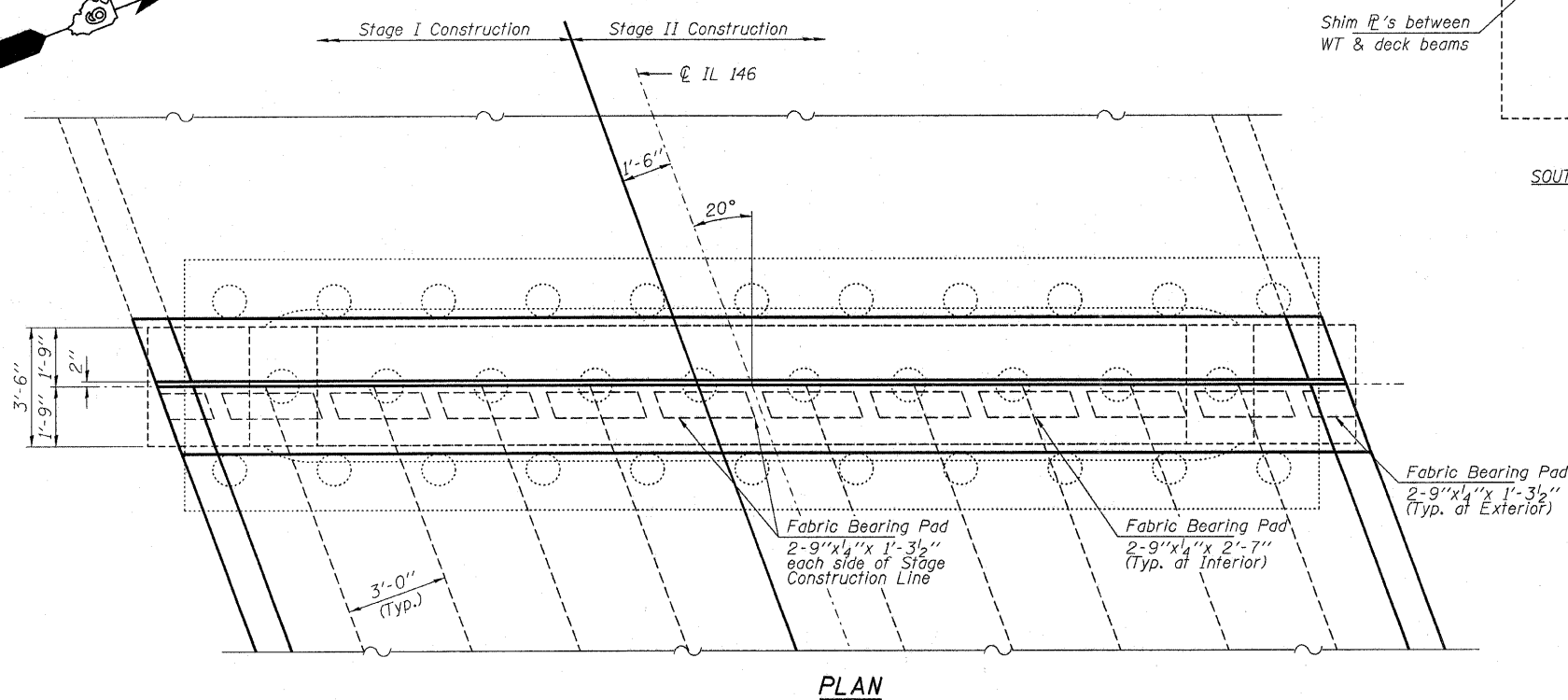
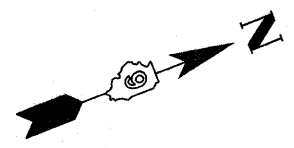
* Anchor bolts shall be drilled and epoxy grouted in place.

Notes:
Cost of retainer and accessories are included with Precast Prestressed Concrete Deck Beams.

The retainer and all accessories shall be galvanized after fabrication according to Article 520.03 of the Standard Specifications.

BILL OF MATERIAL - PIER 1

Asbestos Bearing Pad Removal	Each	22
Structural Repair of Concrete (Depth equal to or less than 5")	Sq. Ft.	12



HAMPTON, LENZINI & RENWICK, INC.
CIVIL & STRUCTURAL ENGINEERS
LAND SURVEYORS

3085 STEVENSON DRIVE, SUITE 201
SPRINGFIELD, ILLINOIS 62703
(217) 546-3400

HLR

ELGIN • SPRINGFIELD

PROJECT NUMBER: 12-52-0007-1 DATE: 04/02/08
DESIGNED: S.M.S. CHECKED: M.D.C. DRAWN: D.T.M.

PIER 1
IL. ROUTE 146 OVER CACHE RIVER
F.A.P. ROUTE 885 / SECTION 107BR-1
JOHNSON COUNTY
STATION 727+23.00
STRUCTURE NO. 044-0014