

STATE OF ILLINOIS  
DEPARTMENT OF TRANSPORTATION

ROUTE NO.	SECTION	COUNTY	TOTAL SHEETS	SHEET NO.	SHEET NO. 17 19 SHEETS
F.A.P. 885	107BR-1	Johnson	94	38	
FED. ROAD DIST. NO. 7	ILLINOIS	FED. AID PROJECT			

Contract #78030


**NOTES**


See Sheet 8 of 19 for Sections Thru Pier views and additional details.

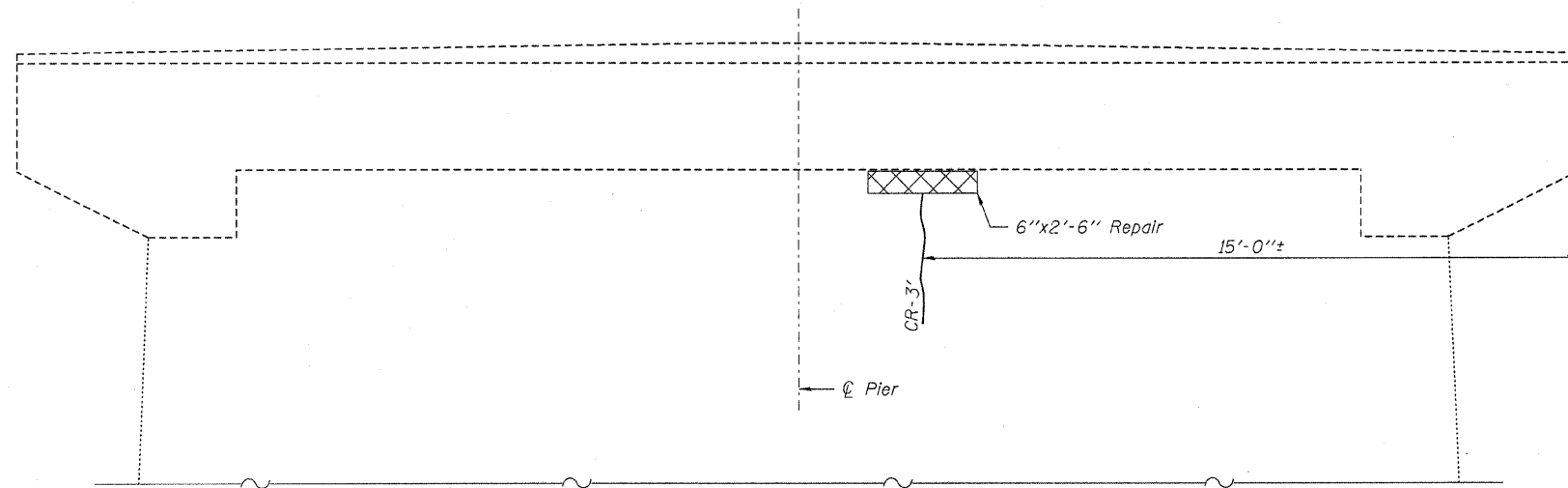
The existing pier bearing seat is to be inspected by the Engineer after deck beam removal. Deteriorated concrete areas shall be repaired if deemed necessary using Structural Repair of Concrete (Depth equal to or less than 5"). Concrete Sealer shall be applied to Concrete Repair areas. Cost included in Concrete Repair item.

Pier Structural Repair of Concrete areas and Crack Repair lengths are estimated from a 10/24/2007 inspection.

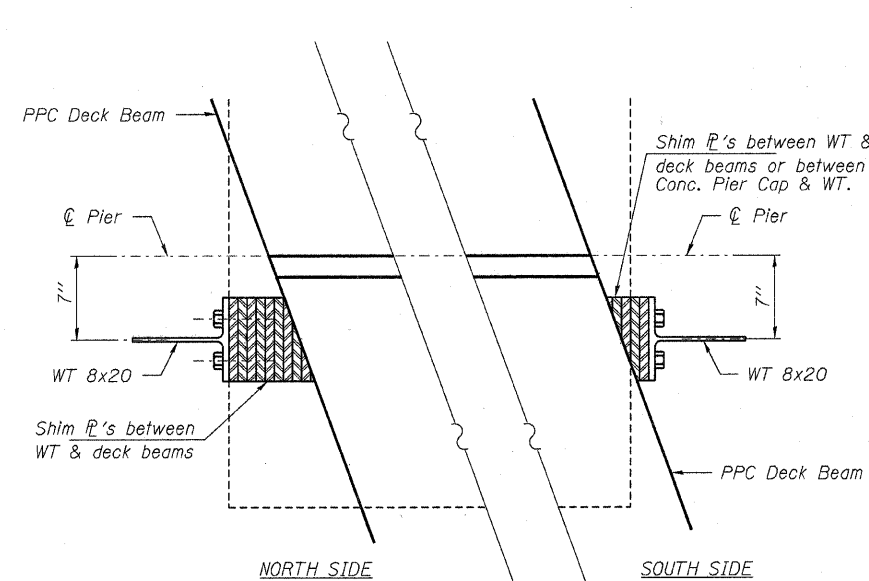
**REPAIR LEGEND**

 Requires Structural Repair of Concrete (Depth Equal to or less than 5")

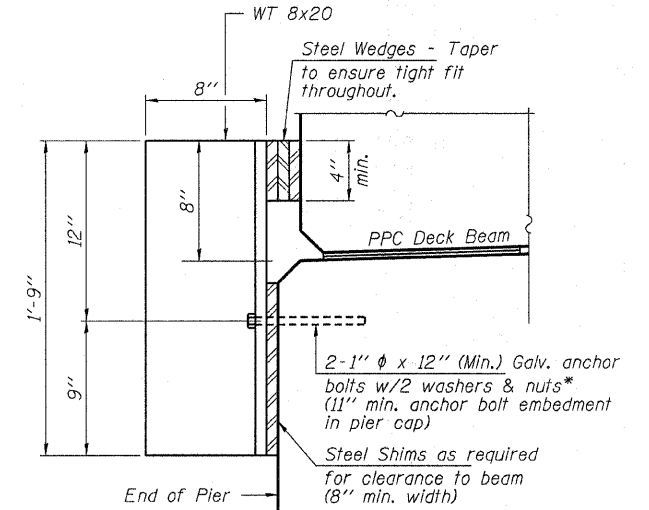
 Requires Epoxy Crack Injection



**EAST ELEVATION**  
(Looking West)



**RETAINER PLAN VIEW**



**EXTERIOR BEAM - RETAINER**

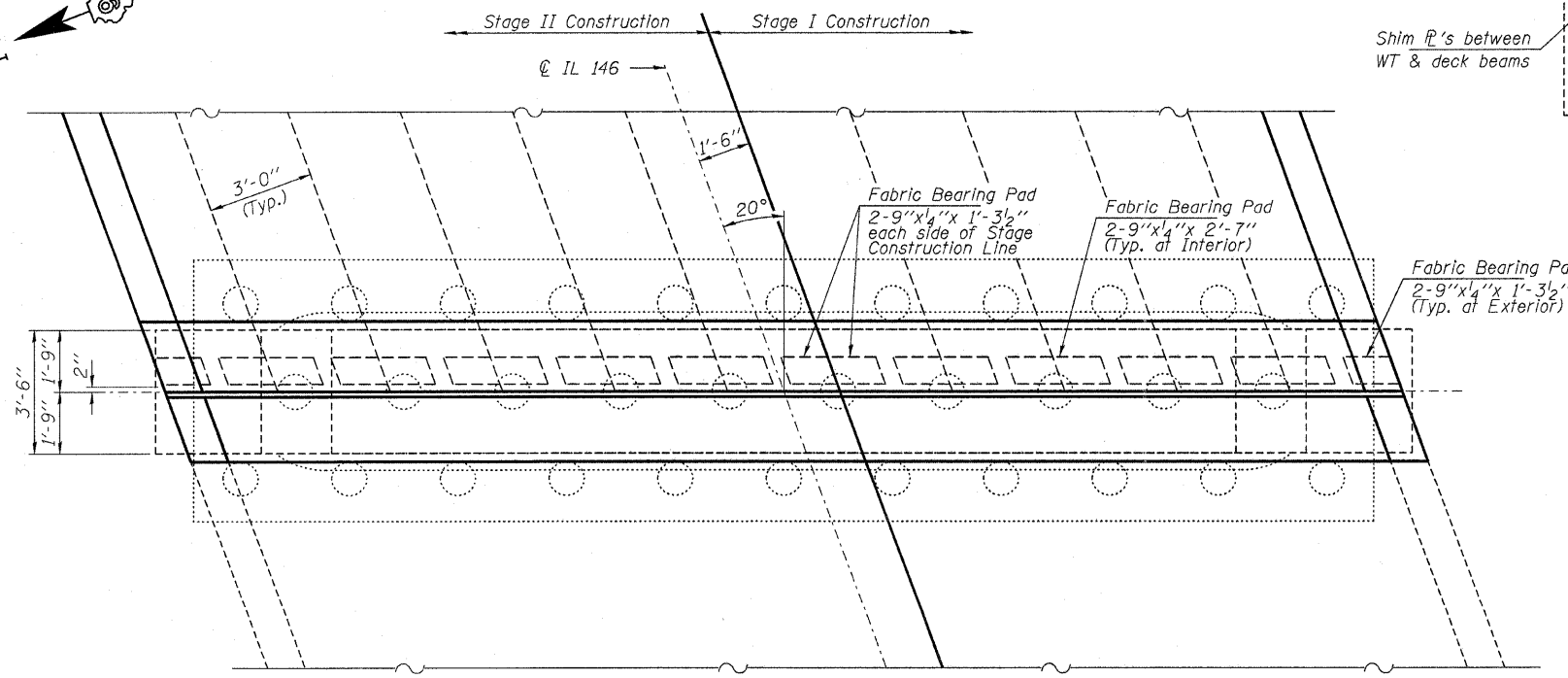
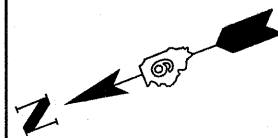
\* Anchor bolts shall be drilled and epoxy grouted in place.

Notes:  
Cost of retainer and accessories are included with Precast Prestressed Concrete Deck Beams.

The retainer and all accessories shall be galvanized after fabrication according to Article 520.03 of the Standard Specifications.

**BILL OF MATERIAL - PIER 2**

Epoxy Crack Injection	Foot	3
Asbestos Bearing Pad Removal	Each	22
Structural Repair of Concrete (Depth equal to or less than 5")	Sq. Ft.	1



**PLAN**

**HAMPTON, LENZINI & RENWICK, INC.**  
CIVIL & STRUCTURAL ENGINEERS  
LAND SURVEYORS  
3085 STEVENSON DRIVE, SUITE 201  
SPRINGFIELD, ILLINOIS 62703  
(217) 546-3400

**ELGIN • SPRINGFIELD**

PROJECT NUMBER: 12-52-0007-1    DATE: 04/02/08  
DESIGNED: S.M.S.    CHECKED: M.D.C.    DRAWN: D.T.M.

**PIER 2**  
**IL. ROUTE 146 OVER CACHE RIVER**  
**F.A.P. ROUTE 885 / SECTION 107BR-1**  
**JOHNSON COUNTY**  
**STATION 727+23.00**  
**STRUCTURE NO. 044-0014**