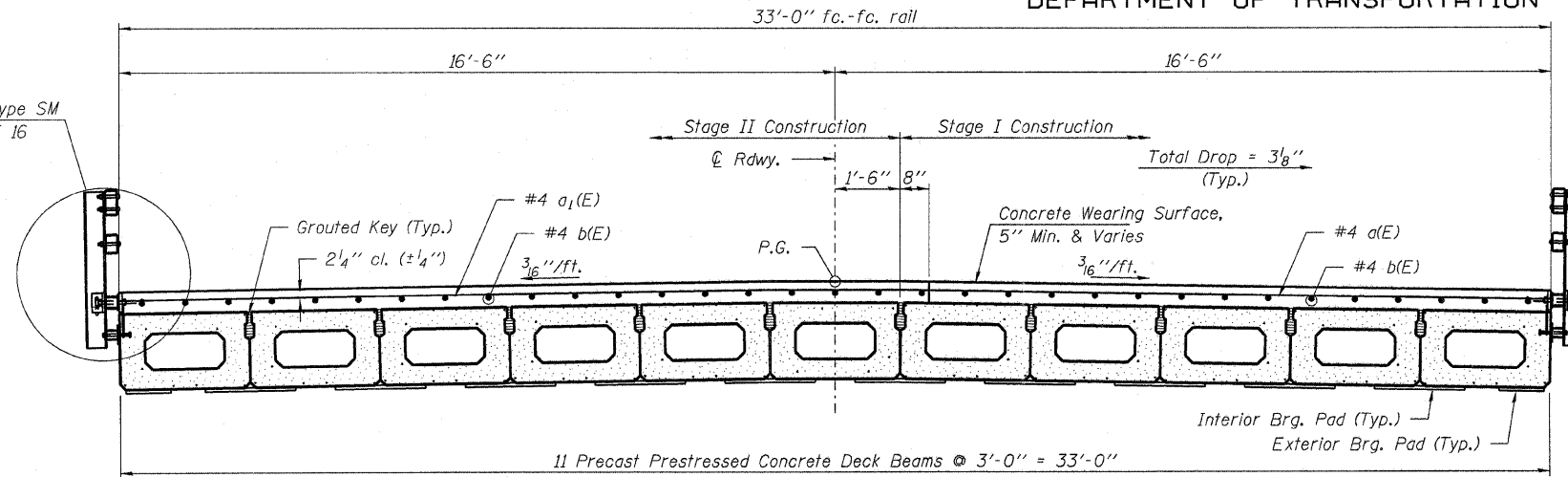


STATE OF ILLINOIS
DEPARTMENT OF TRANSPORTATION

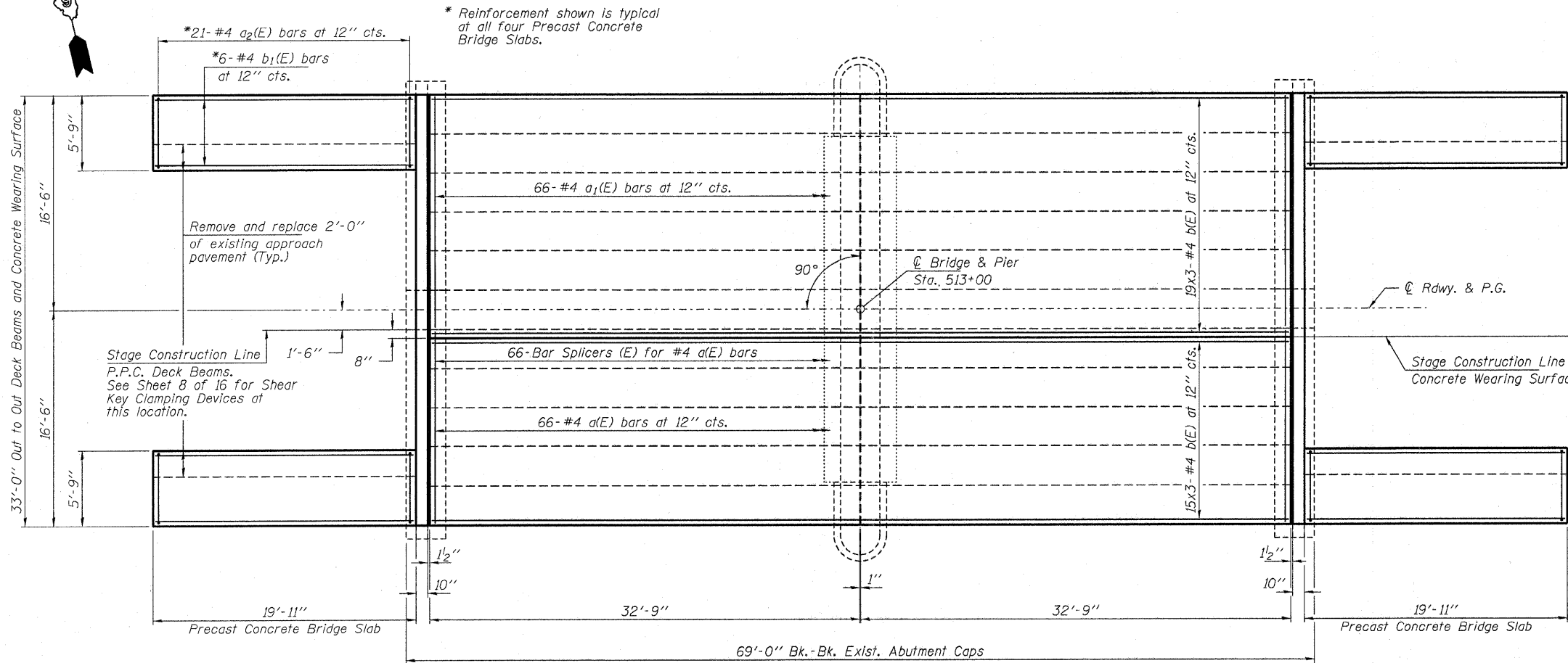
ROUTE NO. F.A.P. 885	SECTION 111BR-1	COUNTY Johnson	STATION 94	SHEET NO. 64	SHEET NO. 5 16 SHEETS
FED. ROAD DIST. NO. 7		ILLINOIS	FED. AID PROJECT-		

Contract #78030

Steel Railing, Type SM
See sheet 11 of 16
for rail details.



CROSS SECTION
(Looking East)



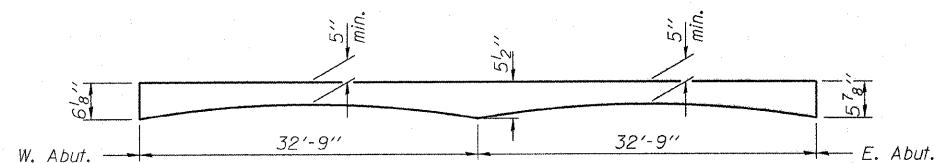
MIN. BAR LAP
#4 bar = 1'-8"

BILL OF MATERIAL

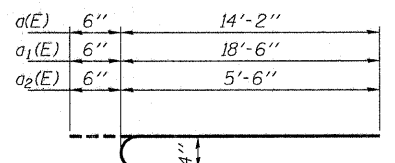
BAR	NO.	SIZE	LENGTH	SHAPE
a(E)	66	#4	14'-8"	┌
a1(E)	66	#4	19'-0"	┌
a2(E)	84	#4	6'-0"	┌
b(E)	102	#4	22'-11"	—
b1(E)	24	#4	19'-8"	—
Reinforcement Bars, Epoxy Coated			Pound	3,700
Concrete Wearing Surface, 5"			Sq. Yd.	292
Bridge Deck Grooving			Sq. Yd.	274
Bar Splicers			Each	66
Protective Coat			Sq. Yd.	298
Precast Prestressed Concrete Deck Beams (17" Depth)			Sq. Ft.	2,162

Bars indicated thus 15x3-#4 etc. indicates 15 lines of bars with 3 lengths per line.
For remainder of superstructure details, see sheets 6, 7, 8 & 10 of 16.

PLAN - RC WEARING SURFACE



REINFORCED CONCRETE WEARING SURFACE PROFILE



a(E), a1(E) OR a2(E) BAR

HAMPTON, LENZINI & RENWICK, INC.
CIVIL & STRUCTURAL ENGINEERS
LAND SURVEYORS

3085 STEVENSON DRIVE, SUITE 201
SPRINGFIELD, ILLINOIS 62703
(217) 546-3400

HLR

ELGIN • SPRINGFIELD

PROJECT NUMBER: 12-52-0007-1 DATE: 04/02/08
DESIGNED: P.S.L. CHECKED: M.D.C. DRAWN: D.T.M.

SUPERSTRUCTURE
IL. ROUTE 146 OVER BELL POND
F.A.P. ROUTE 885 / SECTION 111BR-1
JOHNSON COUNTY
STATION 513+00
STRUCTURE NO. 044-0022