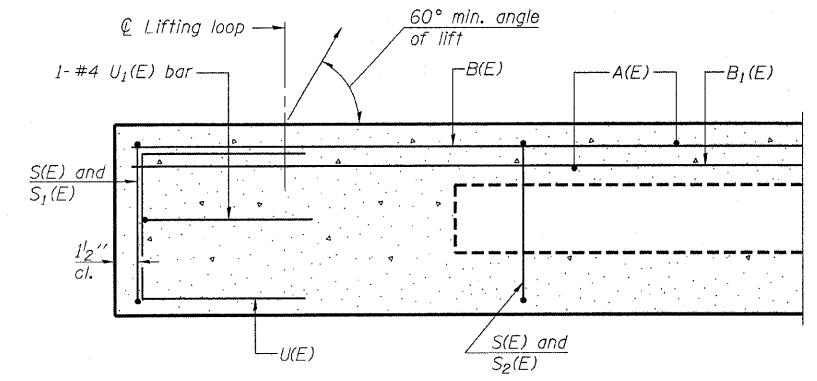


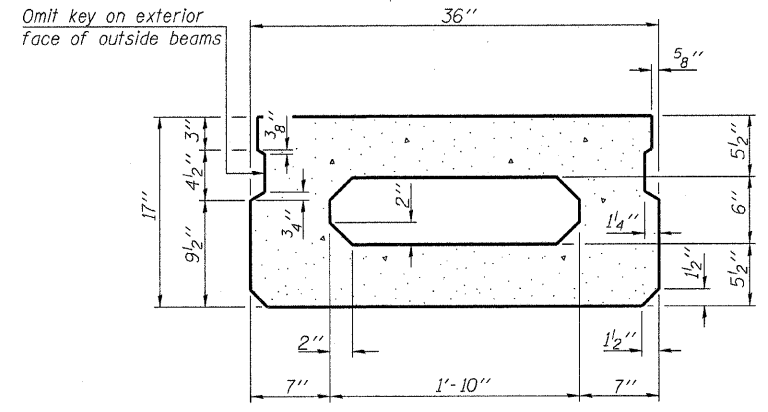
STATE OF ILLINOIS
DEPARTMENT OF TRANSPORTATION

ROUTE NO. F.A.P. 885	SECTION IIIBR-1	COUNTY Johnson	TOTAL SHEETS 94	SHEET NO. 65	SHEET NO. 6 16 SHEETS
FED. ROAD DIST. NO. 7		ILLINOIS	FED. AID PROJECT		

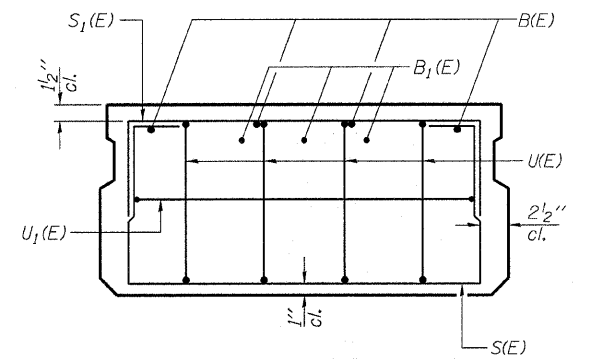
Contract #78030



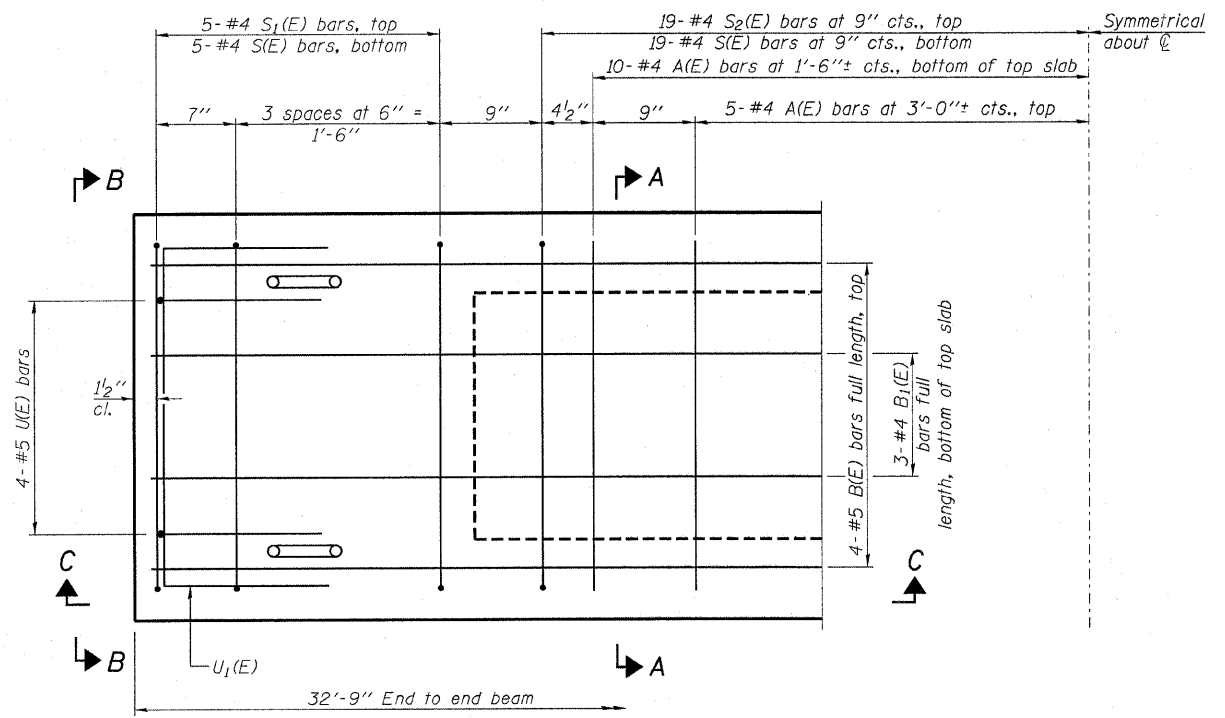
SECTION C-C



SECTION A-A
(Showing dimensions)

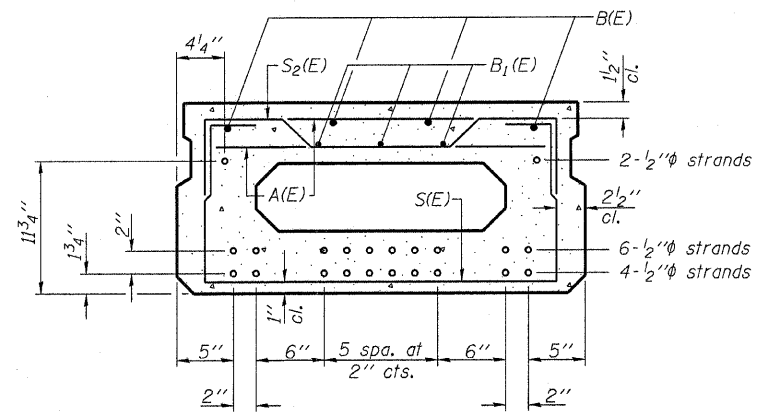


VIEW B-B



PLAN VIEW

Note: Spacing of S(E) and S2(E) bars may be adjusted up to 4" in the immediate area of the transverse tie diaphragms to miss the block outs for the transverse ties.



SECTION A-A
(Showing reinforcement and permissible strand locations)

Note: Place the number of strands specified in each row symmetrically about the centerline of beam in the permissible strand locations shown.

BAR LIST
ONE BEAM ONLY
(For information only)

Bar	No.	Size	Length	Shape
A(E)	30	#4	2'-7"	—
B(E)	4	#5	32'-6"	—
B1(E)	3	#4	32'-6"	—
S(E)	48	#4	5'-9"	U
S1(E)	10	#4	4'-11"	U
S2(E)	38	#4	5'-2"	U
U(E)	8	#5	3'-8"	C
U1(E)	2	#4	5'-0"	C

Note: See sheets 5, 7, & 8 of 16 for additional details and sheet 5 of 16 for Bill of Material.

HAMPTON, LENZINI & RENWICK, INC.
CIVIL & STRUCTURAL ENGINEERS
LAND SURVEYORS

3085 STEVENSON DRIVE, SUITE 201
SPRINGFIELD, ILLINOIS 62703
(217) 546-3400

ELGIN • SPRINGFIELD

PROJECT NUMBER: 12-52-0007-1 DATE: 04/02/08
DESIGNED: P.S.L. CHECKED: M.D.C. DRAWN: D.T.M.

SUPERSTRUCTURE DETAILS

IL. ROUTE 146 OVER BELL POND
F.A.P. ROUTE 885 / SECTION IIIBR-1
JOHNSON COUNTY
STATION 513+00
STRUCTURE NO. 044-0022