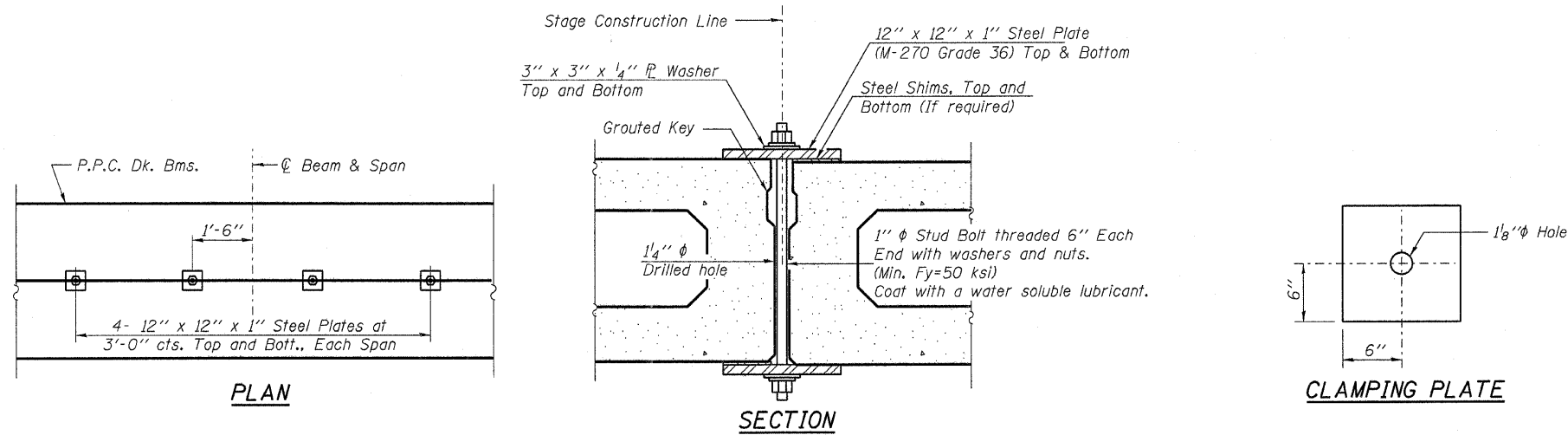


STATE OF ILLINOIS
DEPARTMENT OF TRANSPORTATION

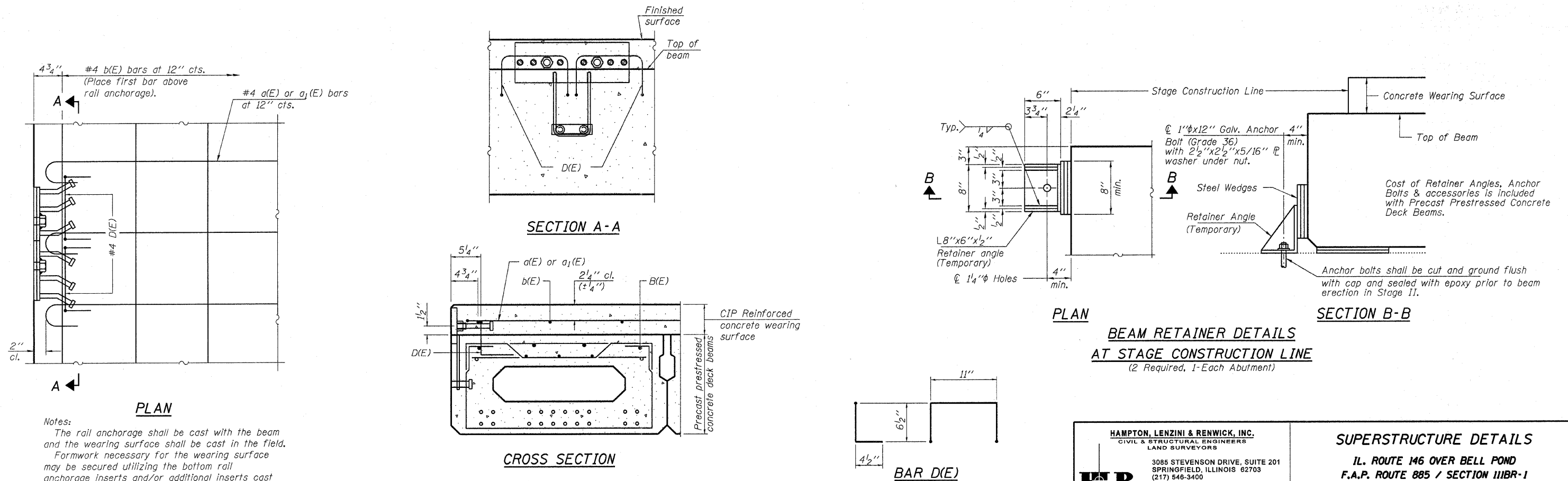
| | | | | | |
|-----------------------|---------|----------|------------------|-----------|--------------------------|
| ROUTE NO. | SECTION | COUNTY | TOTAL SHEETS | SHEET NO. | SHEET NO. 8 16 SHEETS |
| F.A.P. 885 | 111BR-1 | Johnson | 94 | 67 | |
| FED. ROAD DIST. NO. 7 | | ILLINOIS | FED. AID PROJECT | | |

Contract #78030



SHEAR KEY CLAMPING DETAILS AT STAGE CONST. JT.

Cost included with Precast Prestressed Concrete Deck Beams (17" Depth).



Notes:

The rail anchorage shall be cast with the beam and the wearing surface shall be cast in the field.
Formwork necessary for the wearing surface may be secured utilizing the bottom rail anchorage inserts and/or additional inserts cast into the beam. Drilling into the beam will not be permitted.

See Sheet 2 of 16 for location of rail anchors.

CONCRETE OVERLAY MODIFICATIONS FOR RAIL ANCHORAGE

PPC Deck Beams shown, PC Bridge Slabs similar.

HAMPTON, LENZINI & RENWICK, INC.
CIVIL & STRUCTURAL ENGINEERS
LAND SURVEYORS
3085 STEVENSON DRIVE, SUITE 201
SPRINGFIELD, ILLINOIS 62703
(217) 546-3400

ELGIN • SPRINGFIELD

PROJECT NUMBER: 12-52-0007-1 DATE: 04/02/08
DESIGNED: P.S.L. CHECKED: M.D.C. DRAWN: D.T.M.

SUPERSTRUCTURE DETAILS

IL. ROUTE 146 OVER BELL POND
F.A.P. ROUTE 885 / SECTION 111BR-1
JOHNSON COUNTY
STATION 513+00
STRUCTURE NO. 044-0022