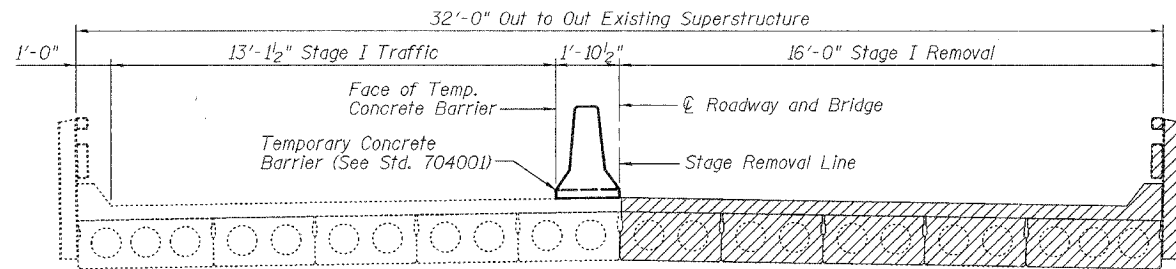


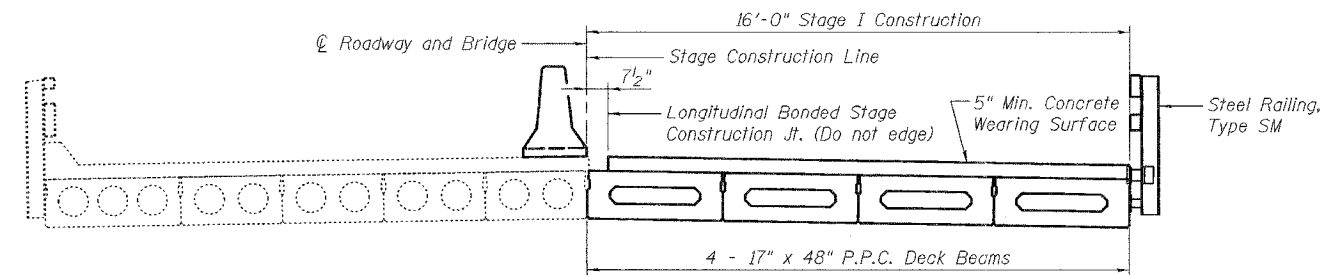
STATE OF ILLINOIS  
DEPARTMENT OF TRANSPORTATION

ROUTE NO.	SECTION	COUNTY	TOTAL SHEETS	SHEET NO.	SHEET NO. 3 16 SHEETS
F.A.S. 1907	21BR-1	ALEXANDER	82	15	
FED. ROAD DIST. NO. 7		ILLINOIS	FED. AID PROJECT		

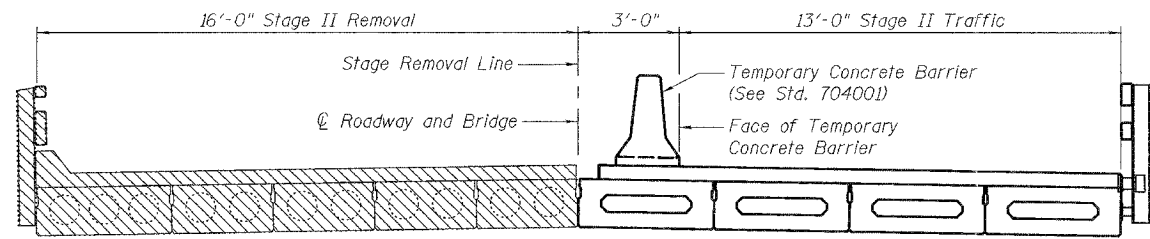
Contract #78032



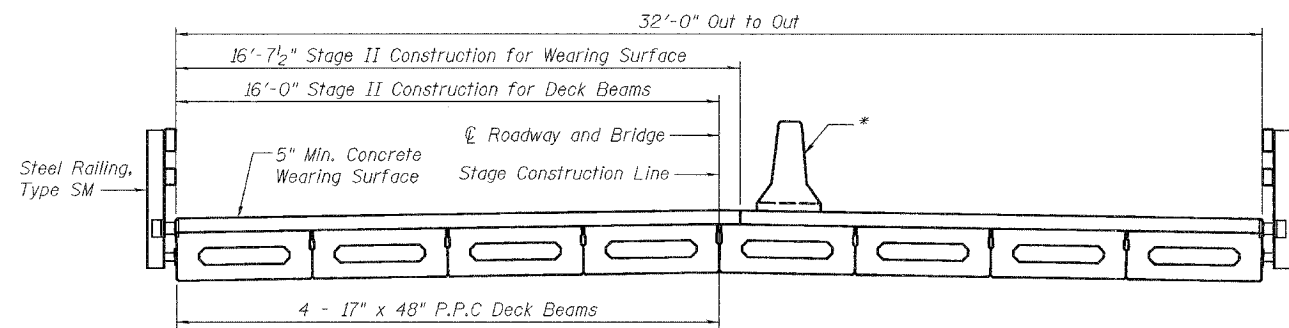
**STAGE I REMOVAL**  
(Looking Upstation)



**STAGE I CONSTRUCTION**  
(Looking Upstation)

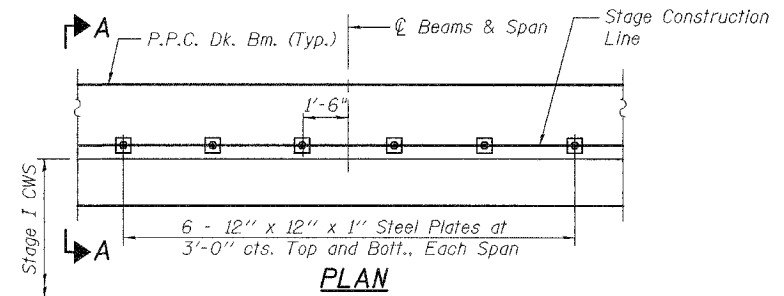


**STAGE II REMOVAL**  
(Looking Upstation)

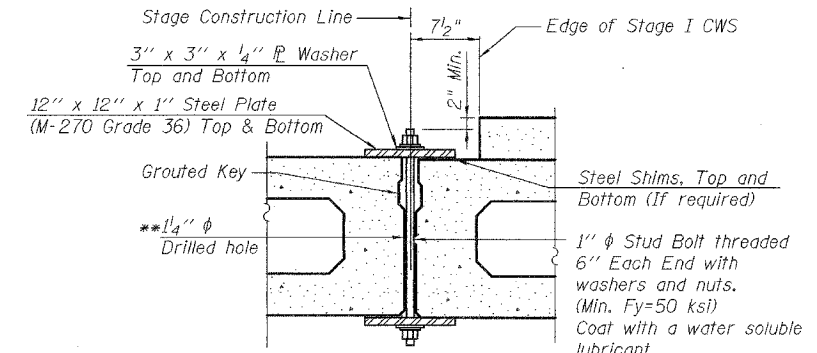


**STAGE II CONSTRUCTION**  
(Looking Upstation)

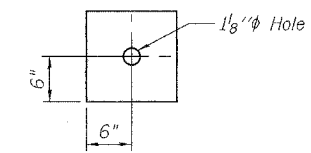
\* Temporary Concrete Barrier to be removed with Stage II Traffic Control upon completion of Stage II construction.



**PLAN**



**SECTION A-A**



**CLAMPING PLATE**

**SHEAR KEY CLAMPING DETAILS**

See Article 504.06 of the Standard Specifications for Stage Construction of Precast Prestressed Concrete Deck Beams.  
Cost included with Precast Prestressed Concrete Deck Beams (17" Depth).

\*\* As an alternate to the drilled holes, the Contractor may request the Fabricator to cast 2" diameter semi-circular recesses in the sides of each beam adjacent to the stage construction line. These recesses should align to form a hole at the appropriate locations for the clamping device bolts. If the Contractor elects to use this alternate, the details shall be identified on the shop drawings.



DESIGNED	YSS
CHECKED	RLM
DRAWN	PRC
CHECKED	YSS

04/08/08

**STAGE CONSTRUCTION DETAILS**  
**ILL. ROUTE 127 OVER HOGSKIN CREEK**  
**F.A.S. ROUTE 1907 - SECTION 21BR-1**  
**ALEXANDER COUNTY**  
**STATION 281+60.00**  
**STRUCTURE NO. 002-0028**