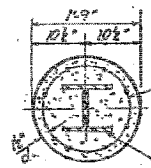


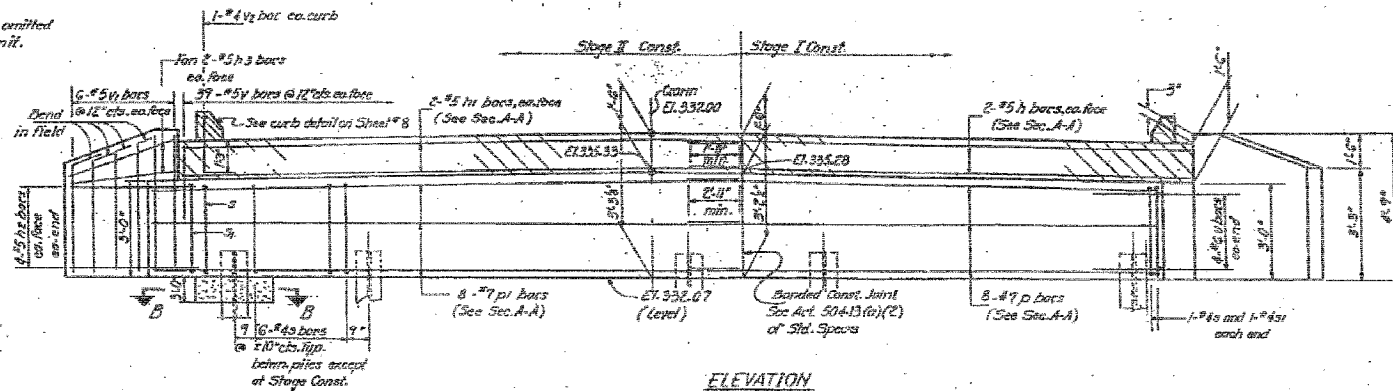
STATE OF ILLINOIS
DEPARTMENT OF TRANSPORTATION

DATE	REVISED	BY	REASON	SHEET NO.
1907	21B-1	ALEXANDER	2.4	2.1
TOTAL SHEETS				14 SHEETS



Melded wire fabric 6x6-14.0x4.0 weighing 88#/100 sq. ft. The cost of Class A Concrete Encasement and Reinforcement is incidental to the cost of furnishing piles. Forms for encasement may be omitted when soil conditions will permit.

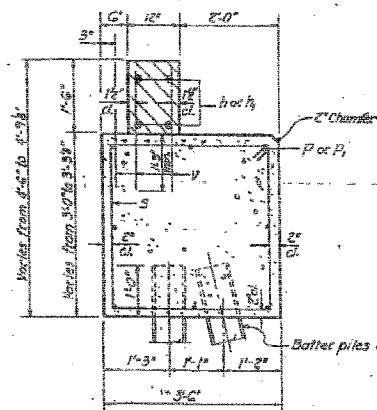
SECTION B-B



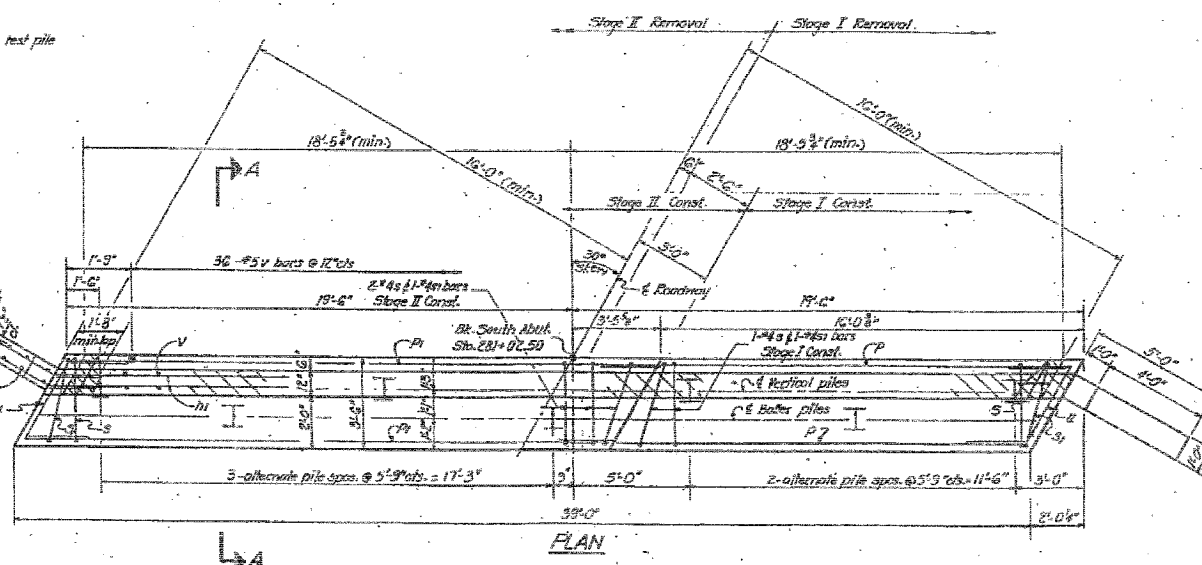
ELEVATION

PILE DATA

Type: Steel HP10x42
Capacity: 55 Tons
Est. Length: 78 Ft.
No. Required: 6 plus 1 test pile



SEC. A-A



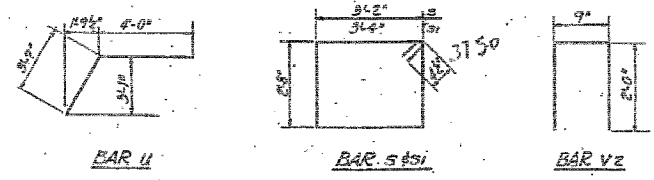
PLAN

BILL OF MATERIAL

Bar	No.	Size	Length	Shape
P	4	#5	17'-9"	—
P1	4	#5	22'-9"	—
P2	16	#5	0'-0"	—
P3	8	#5	5'-0"	—
P4	8	#7	18'-9"	—
P5	8	#7	22'-9"	—
Q	35	#6	12'-5"	□
Q1	6	#6	12'-9"	□
Q2	8	#6	11'-9"	□
V	114	#5	0'-0"	—
V1	24	#5	4'-0"	—
V2	2	#6	8'-9"	□
Class A Concrete				Cu. Yd. 125
Reinforcement Bars				Pounds 1860
Steel Piles HP10x42				Units 6
Test Pile (Steel HP10x42)				Each 1

Notes:
Hatched area shall be poured after beams are in place.
All edges shall have standard 3/8" chamfers unless otherwise noted.

DESIGNED	Patrick M. Pihon	DATE	July 9 1982
CHECKED	Dany L. Brown	EXAMINED	James T. Rayburn
DRAWN	S.K.K.	PASSED	
CHECKED	A.L.B.	APPROVED	



SOUTH ABUTMENT
FAS. RT. 1907 SEC. 21B-1
ALEXANDER COUNTY
STA. 281+00.00

FOR INFORMATION ONLY



FILE NAME =	USER NAME = #USER#	DESIGNED - JMH	REVISED -	STATE OF ILLINOIS DEPARTMENT OF TRANSPORTATION	EXISTING STRUCTURE PLANS	F.A.S. RTE.	SECTION	COUNTY	TOTAL SHEETS	SHEET NO.	
#FILE#		DRAWN - AEC	REVISED -			1907	21B-1	ALEXANDER	82	37	
PLOT SCALE = #SCALE#		CHECKED - JMH	REVISED -			CONTRACT NO. 78032					
PLOT DATE = #DATE#		DATE - 03/04/08	REVISED -			FED. ROAD DIST. NO. 7 ILLINOIS FED. AID PROJECT					