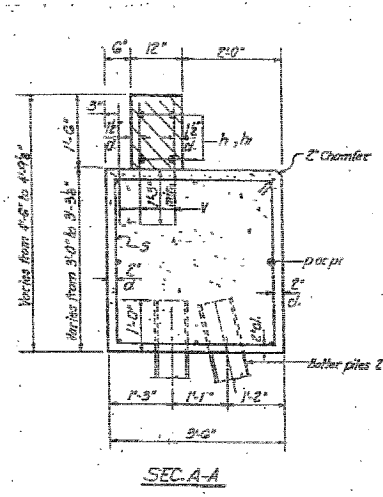
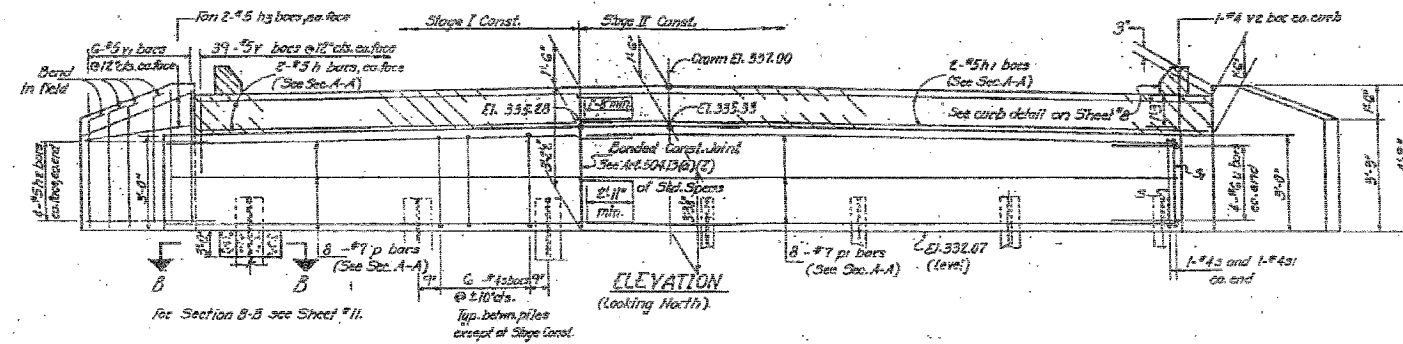
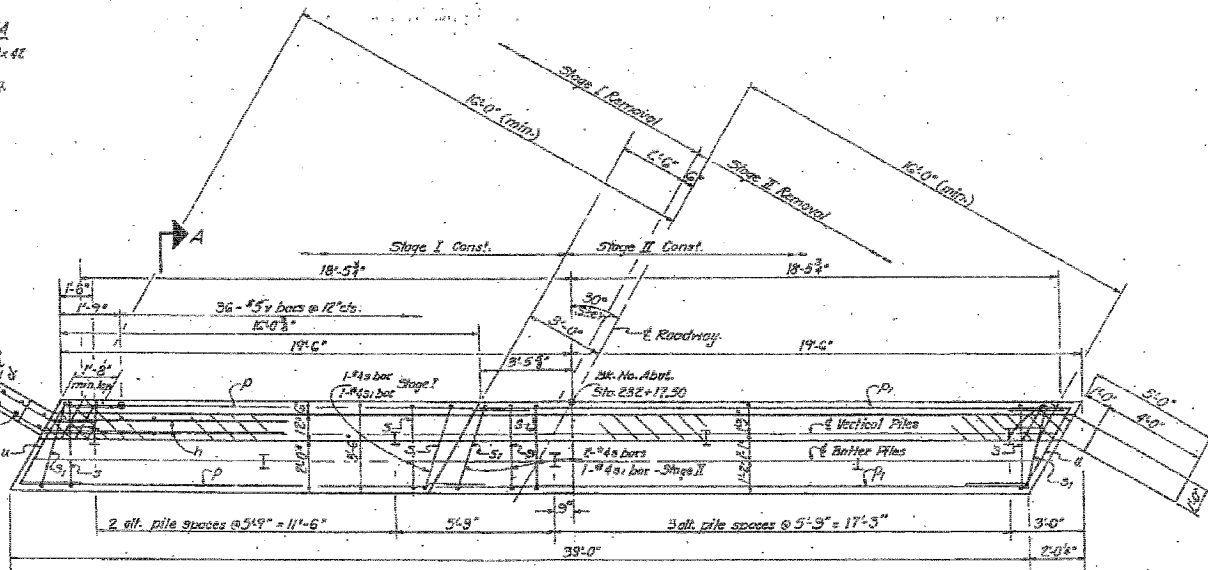


STATE OF ILLINOIS
DEPARTMENT OF TRANSPORTATION

PROJECT NO.	SECTION	SHEET NO.	TOTAL SHEETS
1907	21BR-1	14	38



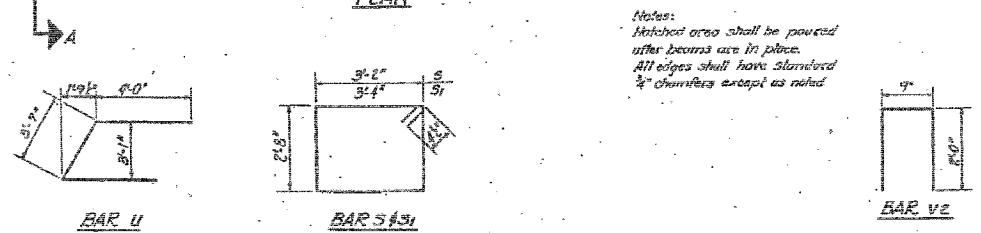
PILE DATA
Type: Steel HP 11x41
Capacity: 55 kips
Est. Length: 84 Ft.
No. Required: 7



BILL OF MATERIAL

Bar	No.	Size	Length	Volume
h	4	#5	17'-7"	
h1	4	#5	22'-7"	
h2	8	#5	6'-7"	
h3	8	#5	3'-0"	
d	8	#7	18'-9"	
h4	8	#7	22'-9"	
s	35	#4	12'-5"	
s1	4	#4	12'-9"	
u	8	#6	11'-7"	
v	114	#5	2'-0"	
v1	24	#5	6'-6"	
v2	2	#4	6'-7"	
Class X Concrete				CU WT. 17.5
Reinforcement Bars				PLANT 1860
Steel Piles HP 11x41				LN. FT. 588

DESIGNED: *John M. Patrylo*
CHECKED: *Amey A. Brown*
DRAWN: *A.L.B.*
APPROVED: *James T. Robinson*
DATE: July 9, 2002



Notes:
Hatched area shall be poured after beams are in place.
All edges shall have standard 1/4" chamfers except as noted.

NORTH ABUTMENT
EAS. RT. FOOT SEC. 21B-1
ALEXANDER COUNTY
STA. 281+00.00



FOR INFORMATION ONLY

FILE NAME = #FILE#	USER NAME = #USER#	DESIGNED - JMH	REVISIONS -	STATE OF ILLINOIS DEPARTMENT OF TRANSPORTATION	EXISTING STRUCTURE PLANS	F.A.S. RTE. 1907	SECTION 21BR-1	COUNTY ALEXANDER	TOTAL SHEETS 82	SHEET NO. 38		
PLOT SCALE = #SCALE#	DRAWN - AEC	CHECKED - JMH	REVISIONS -			SCALE: NONE	SHEET NO. OF SHEETS STA. TO STA.	FED. ROAD DIST. NO. 7 (ILLINOIS) FED. AID PROJECT				
PLOT DATE = #DATE#	DATE - 03/04/08	REVISIONS -	REVISIONS -			CONTRACT NO. 78032						