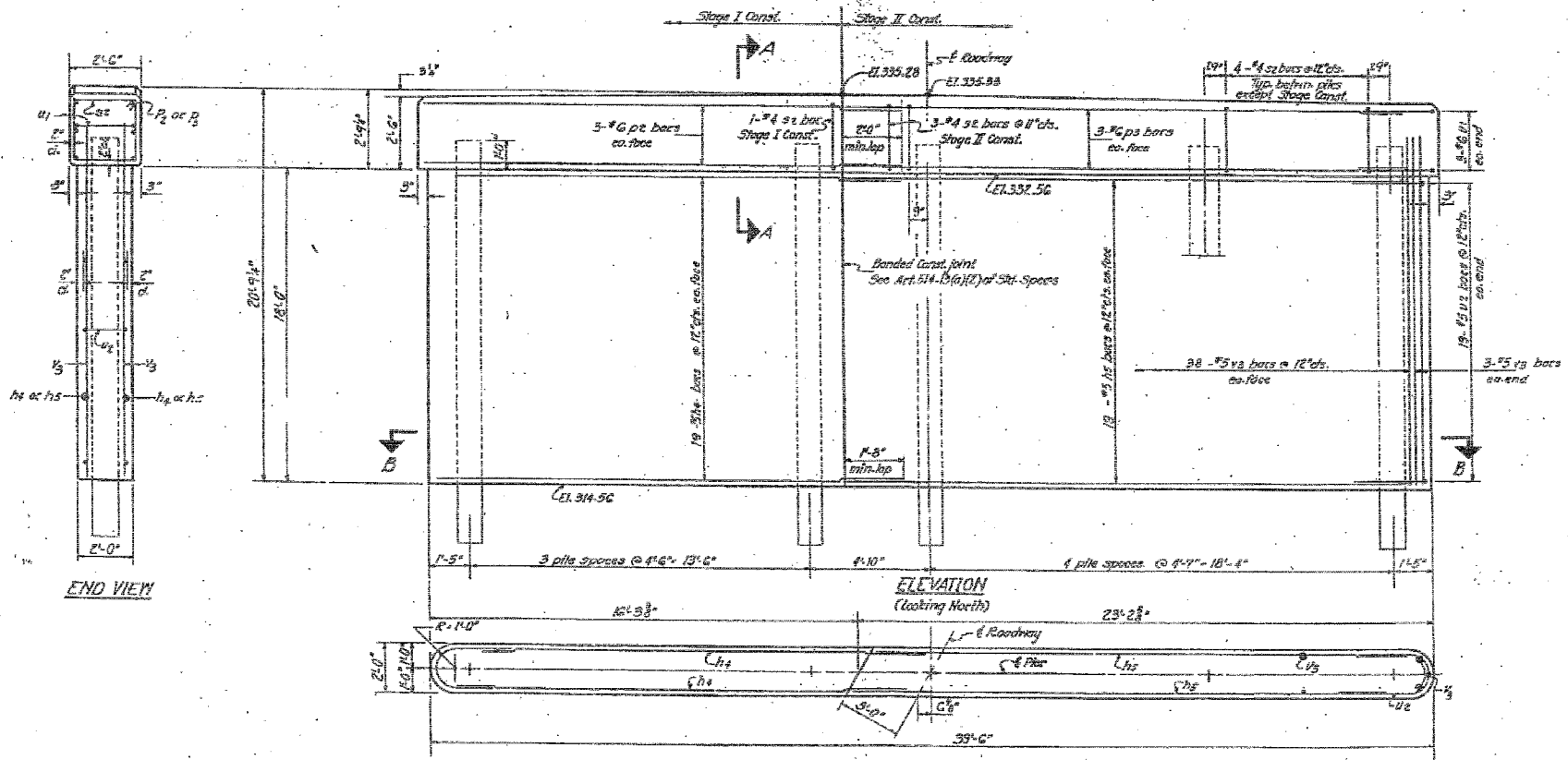
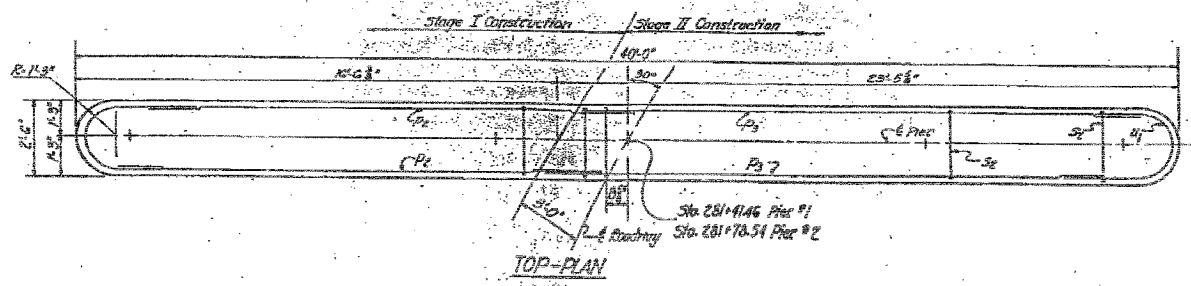


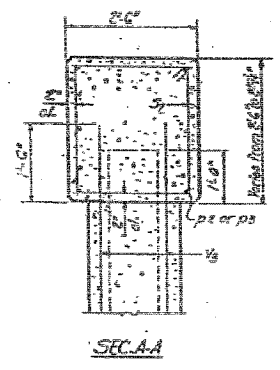
STATE OF ILLINOIS
DEPARTMENT OF TRANSPORTATION

PROJECT NO.	21B-1	SECTION	24	25	SHEET NO. 11
DATE		DATE			

FILE DATA
Type: Concrete
Capacity: Pile # 1-26 tons, Pile # 2-35 tons
Est. Length: Pile # 1-73 ft., Pile # 2-69 ft.
No. Reinforced: Pile # 1-9
Pile # 2-8 plus one test pile.



END VIEW



PIERS
BILL OF MATERIAL

Bar	No.	Size	Length	Shape
h4	76	#5	85'-3"	
h5	76	#5	21'-6"	
h6	12	#6	10'-4"	
h7	12	#6	21'-3"	
h8	64	#4	9'-5"	U
h9	12	#5	11'-5"	U
h10	76	#5	9'-8"	U
h11	164	#5	19'-3"	

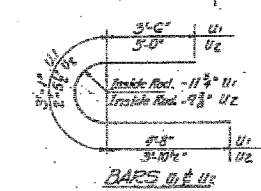
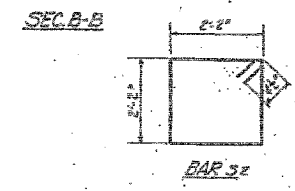
Class X Concrete	Cu. Yd.	118.4
Reinforcement Bars	Pounds	8520
Concrete Piles	Lt. Ft.	1209
Test Pile (Concrete)	Smth	1

DESIGNED: *[Signature]*
CHECKED: *[Signature]*
DRAWN: *[Signature]*
CHECKED: *[Signature]*

EXAMINED: *[Signature]*
APPROVED: *[Signature]*

DATE: July 9, 1982

Note:
All edges shall have standard
3/8" chamfers unless otherwise
noted.



PIERS
F.A.S. RT. 1907 SEC. 21 B-1
ALEXANDER CO.
STA. 211+60.00



FOR INFORMATION ONLY

FILE NAME = #FILE#	USER NAME = #USER#	DESIGNED - JMH	REVISED -	STATE OF ILLINOIS DEPARTMENT OF TRANSPORTATION	EXISTING STRUCTURE PLANS	F.A.S. RTE. 1907	SECTION 21BR-1	COUNTY ALEXANDER	TOTAL SHEETS 82	SHEET NO. 39	
PLOT SCALE = #SCALE#	CHECKED - JMH	REVISOR -	SCALE: NONE			SHEET NO. OF SHEETS	STA. TO STA.	FED. ROAD DIST. NO. 7 (ILLINOIS) FED. AID PROJECT			
PLOT DATE = #DATE#	DATE - 03/04/08	REVISOR -									
CONTRACT NO. 78032											