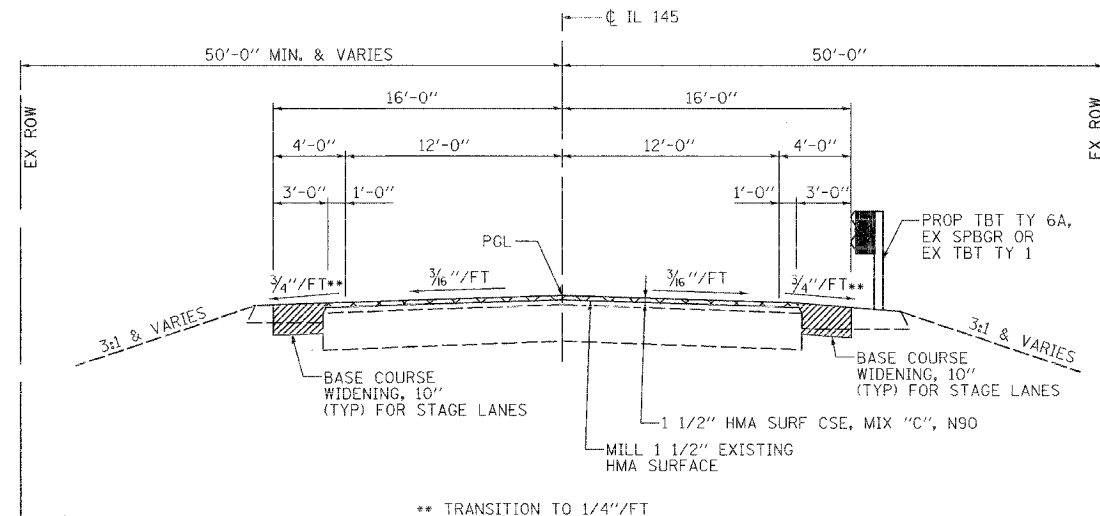


WITHOUT GUARDRAIL

WITH GUARDRAIL

EXISTING TYPICAL ROADWAY SECTION

STA. 531+15 TO 532+50 LT
 STA. 531+15 TO 532+73 RT
 STA. 533+81 LT TO 535+40
 STA. 534+05 RT TO 535+40



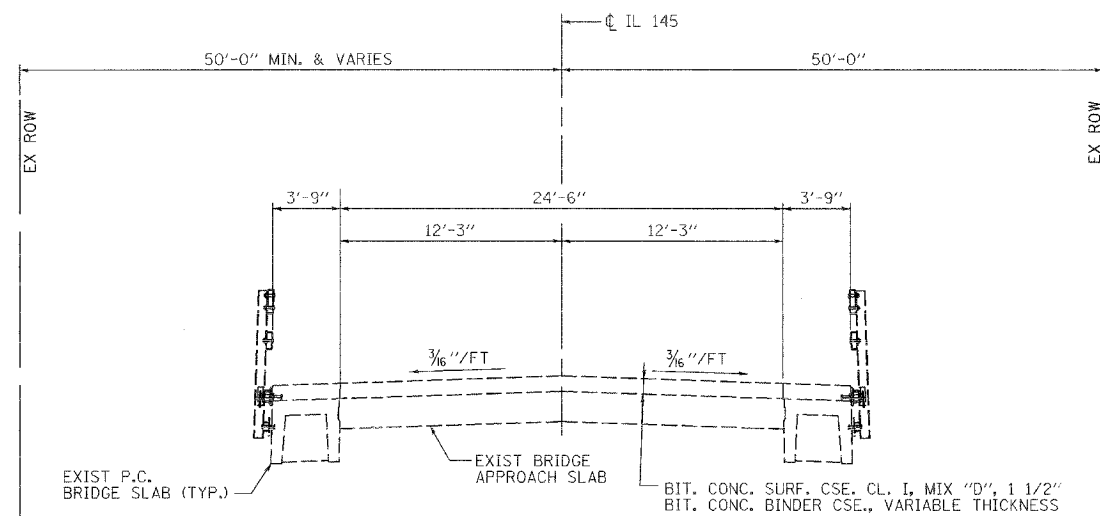
WITHOUT GUARDRAIL

WITH GUARDRAIL

PROPOSED TYPICAL ROADWAY SECTION

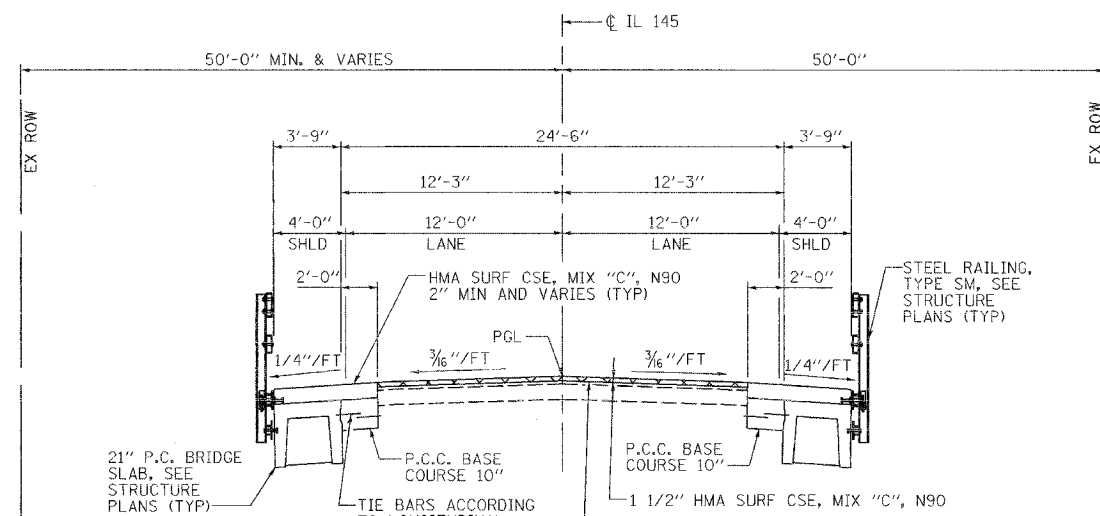
STA. 531+15 TO 532+50 LT
 STA. 531+15 TO 532+73 RT
 STA. 533+81 LT TO 535+40
 STA. 534+05 RT TO 535+40

** TRANSITION TO 1/4"/FT NEAR P.C. BRIDGE SLABS



EXISTING BRIDGE APPROACH SECTION

STA. 532+50 LT TO 532+72 LT
 STA. 532+73 RT TO 532+99 RT
 STA. 533+55 LT TO 533+81 LT
 STA. 533+82 RT TO 534+05 RT



PROPOSED BRIDGE APPROACH SECTION

STA. 532+50 LT TO 532+72 LT
 STA. 532+73 RT TO 532+99 RT
 STA. 533+55 LT TO 533+81 LT
 STA. 533+82 RT TO 534+05 RT

NOTE: BASE COURSE WIDENING SHALL EXTEND TO THE P.C. BRIDGE SLAB AT EACH CORNER OF THE STRUCTURE. STATIONS GIVEN ARE APPROXIMATE AND SHOULD BE FIELD VERIFIED.

HMA MIXTURE REQUIREMENTS

LOCATION(S):	HOT MIX ASPHALT SURFACE COURSE	BASE COURSE WIDENING
MIXTURE USE(S):	HOT MIX ASPHALT SURFACE COURSE, MIX C, N90	HOT MIX ASPHALT BINDER COURSE, N90, IL-19.0
AC/PG:	PG64-22	PG64-22
RAP % (MAX)	10	10
DESIGN AIR VOIDS:	4.0%, 90 GYRATION DESIGN	4.0%, 90 GYRATION DESIGN
MIXTURE COMPOSITION: (GRADATION MIXTURE)	IL-9.5 mm OR IL 12.5 mm	IL-19.0 mm
FRICITION AGGREGATE:	C SURFACE	NONE



FILE NAME =	USER NAME = #USER#	DESIGNED - JMH	REVISED -	STATE OF ILLINOIS DEPARTMENT OF TRANSPORTATION	FAP ROUTE 132 (IL 145) TYPICAL SECTIONS	F.A.P. RTE.	SECTION	COUNTY	TOTAL SHEETS	SHEET NO.	
#FILE#	PLOT SCALE = #SCALE#	CHECKED - JMH	REVISED -			132	102BR-1	MASSAC	82	46	
	PLOT DATE = #DATE#	DATE - 02/04/08	REVISED -			CONTRACT NO. 78032					
						SCALE: NONE		SHEET NO. 1 OF 1 SHEETS		STA. 531+15 TO STA. 535+40	

FED. ROAD DIST. NO. 7 (ILLINOIS) FED. AID PROJECT