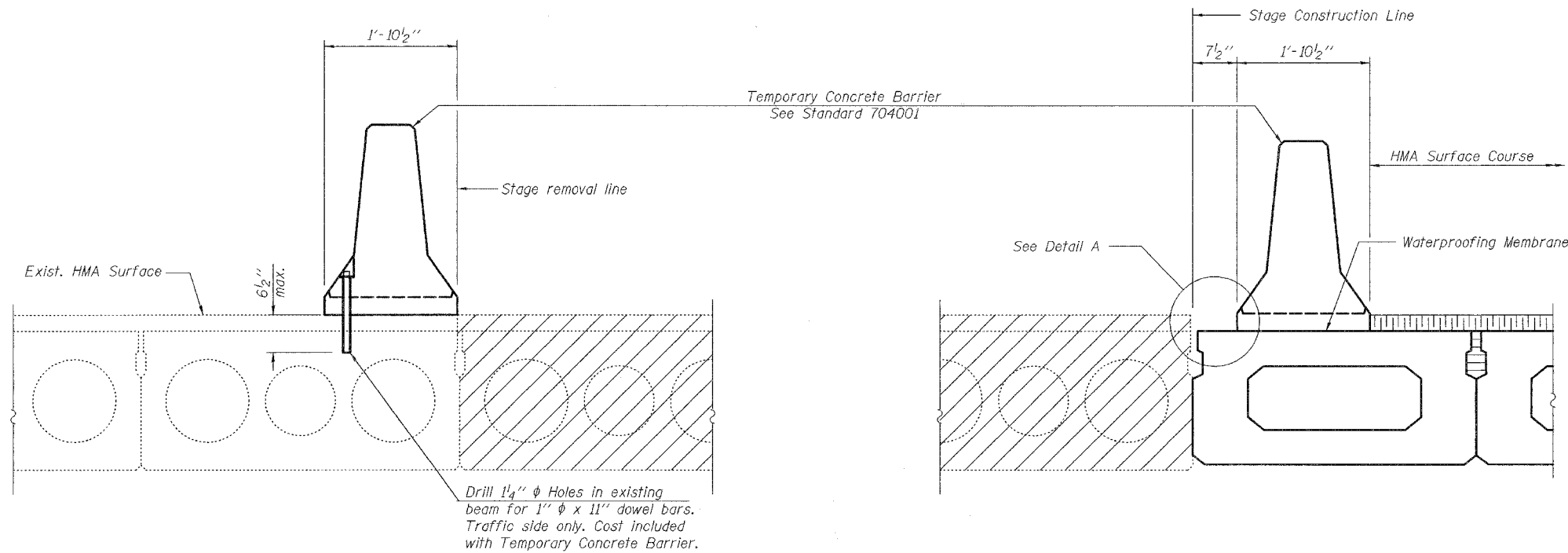


STATE OF ILLINOIS  
DEPARTMENT OF TRANSPORTATION

ROUTE NO.	SECTION	COUNTY	TOTAL SHEETS	SHEET NO.	SHEET NO.
F.A.P. 132	102BR-1	MASSAC	82	57	16 SHEETS
FED. ROAD DIST. NO. 7	ILLINOIS	FED. AID PROJECT-			

Contract #78032



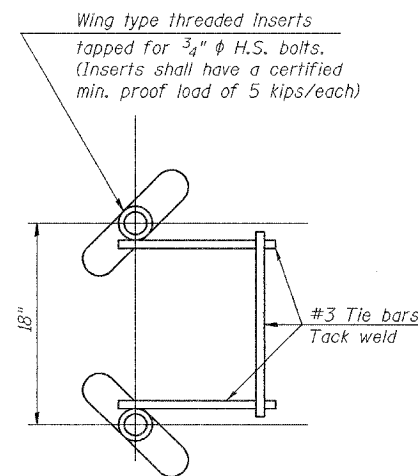
EXISTING PPC DECK BEAM

NEW PPC DECK BEAM

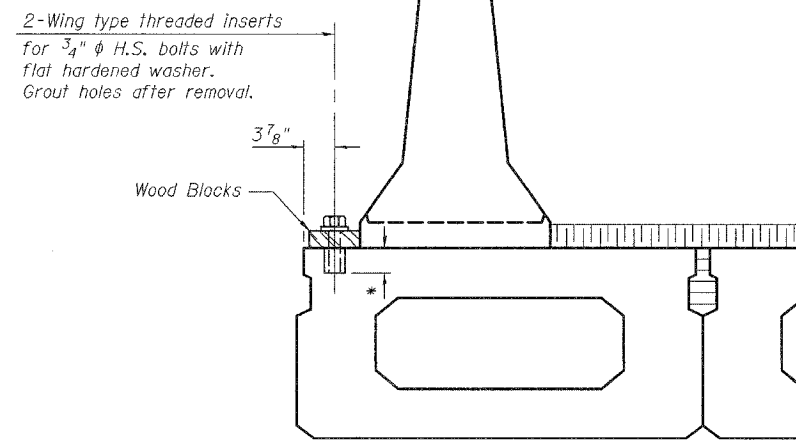
SECTIONS THRU PPC DECK BEAMS

NOTES

- The 3/4" high strength bolts used to connect the wood blocks shall be tightened to a snug fit without crushing the wood block.
- The wing type threaded insert assembly shall be spaced 6'-0" longitudinally.
- The Waterproofing Membrane shall extend under the Temporary Concrete Barrier without the asphalt sand seal protection layer.
- Once the Temporary Concrete Barrier has been removed and the penetrating primer, coal tar emulsion membrane, fiber-glass fabric and coal tar emulsion slurry layers of the Waterproofing Membrane is lapped 6", the asphalt sand seal protection layer shall be applied according to Section 581 of the Standard Specifications.
- The cost for H.S. bolts, flat headed washers and wood block is included with Temporary Concrete Barrier.
- The cost for wing type threaded inserts is included with Precast Prestressed Concrete Deck Beams (21" Depth).
- See Roadway Plans for quantity of Temporary Concrete Barrier.



INSERT DETAIL



\*Type of insert selected shall be such that insert depth does not interfere with void.

DETAIL A

The Temporary Concrete Barrier and wood blocks shall not be removed until Stage II Construction PPC Deck Beams have been placed, shear keys grouted, and block-outs poured and cured.



DESIGNED	RLM
CHECKED	YSS
DRAWN	PRC
CHECKED	RLM

02/04/08

TEMPORARY CONCRETE BARRIER  
FOR STAGE CONSTRUCTION  
ILL. ROUTE 145 OVER MASSAC CREEK  
F.A.P. ROUTE 132 - SECTION 102BR-1  
MASSAC COUNTY  
STATION 533+27.15  
STRUCTURE NO. 064-0008