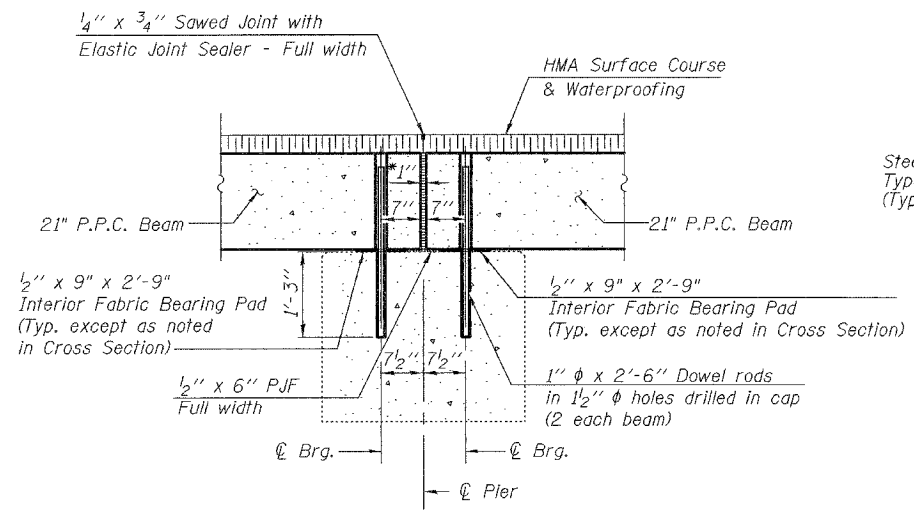


STATE OF ILLINOIS  
DEPARTMENT OF TRANSPORTATION

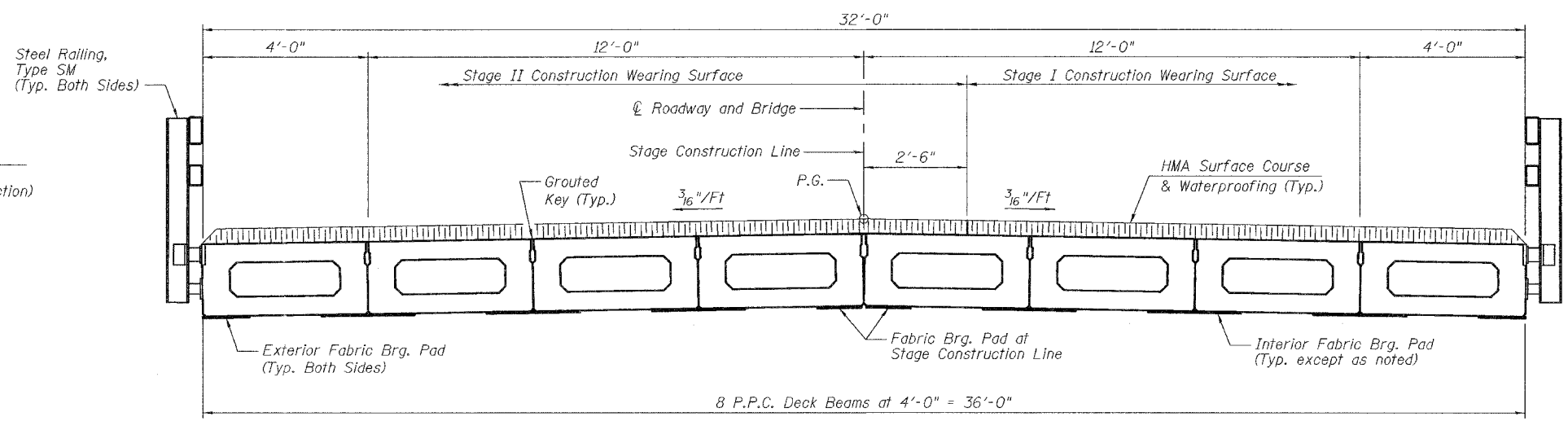
ROUTE NO.	SECTION	COUNTY	TOTAL SHEETS	SHEET NO.
F.A.P. 132	102BR-1	MASSAC	82	63
FED. ROAD DIST. NO. 7		ILLINOIS	FED. AID PROJECT-	

SHEET NO. 10  
16 SHEETS  
Contract #78032

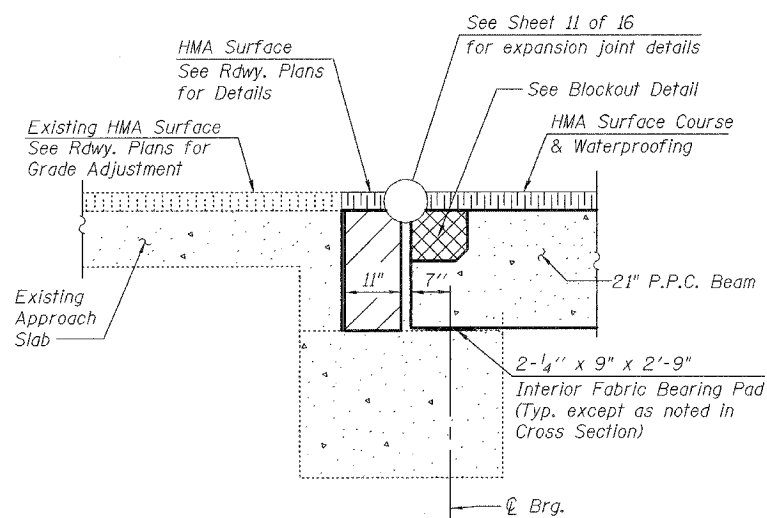


**SECTION THRU PIER**

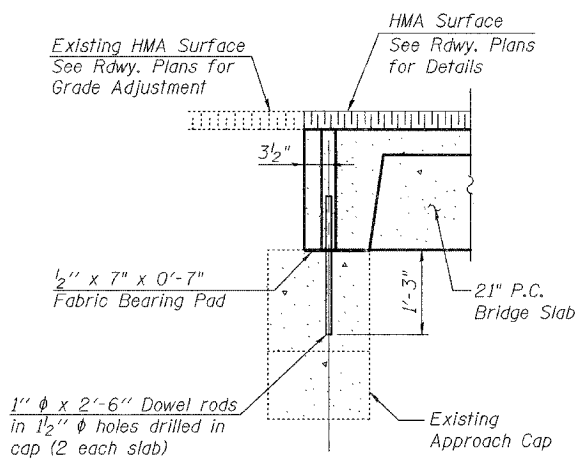
\* 1" Jt. shall be filled with non-shrink grout. 1" dimension may vary to accommodate tolerance in beam lengths.



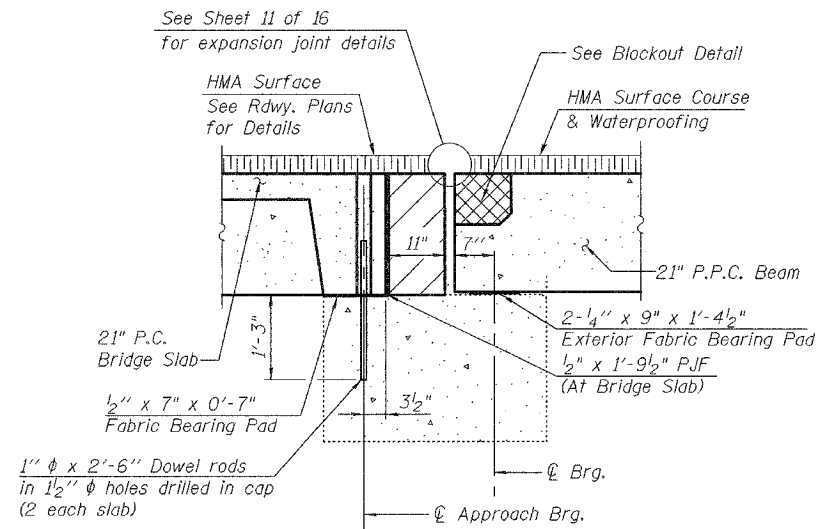
**CROSS SECTION**  
(Looking Upstation)



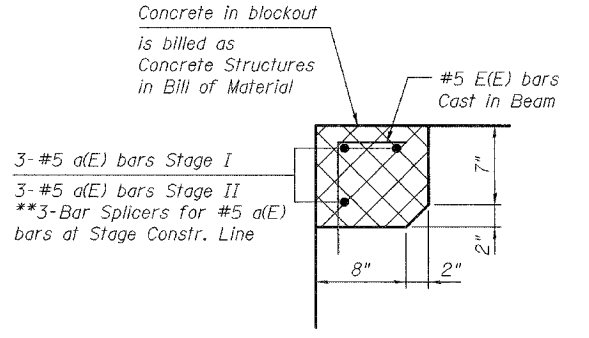
**SECTION THRU ABUTMENT AT APPROACH SLAB**



**SECTION THRU APPROACH CAP**



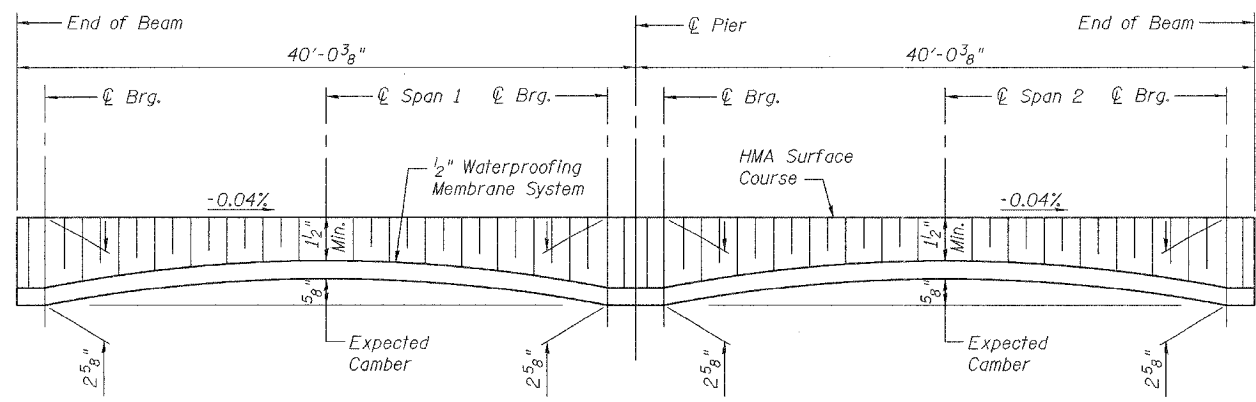
**SECTION THRU ABUTMENT AT SHOULDER**



**BLOCKOUT DETAIL**  
\*\*At Each Abutment

**BILL OF MATERIAL**

Bar	No.	Size	Length	Shape
a(E)	12	#5	20'-6"	—
Reinforcement Bars, Epoxy Coated		Pound		260
Concrete Structures		Cu. Yd.		1.9
Hot-Mix Asphalt Surface Course, Mix "C", N90		Ton		29
Waterproofing Membrane System		Sq. Yd.		285



**HMA WEARING SURFACE PROFILE**

**Notes:**  
After beams have been erected, holes shall be drilled into substructure and anchor dowels placed. Dowel holes shall be filled with non-shrink grout to top of beam and allowed to cure min. 24 hrs. prior to grouting the shear keys.  
All horizontal dimensions are at right angles to beam ends. Hatched and crosshatched areas to be poured after P.P.C. deck beams and P.C. bridge slab are in place and shear keys are grouted and cured. See Sheet 9 of 16 for concrete structures details.  
See Sheets 7 and 8 of 16 for bearing pad details.  
See Sheet 11 of 16 for strip seal expansion joint details.  
See Section 581 for Waterproofing Membrane System.  
See Roadway Plans for HMA surface course, Mix "C", N90 mixture requirements. The HMA surface course shall be placed according to Section 582 of the Standard Specifications.



DESIGNED	RLM
CHECKED	YSS
DRAWN	PRC
CHECKED	RLM

03/04/08

**SUPERSTRUCTURE DETAILS**  
**SECTIONS AND JOINT DETAILS**  
**ILL. ROUTE 145 OVER MASSAC CREEK**  
**F.A.P. ROUTE 132 - SECTION 102BR-1**  
**MASSAC COUNTY**  
**STATION 533+27.15**  
**STRUCTURE NO. 064-0008**