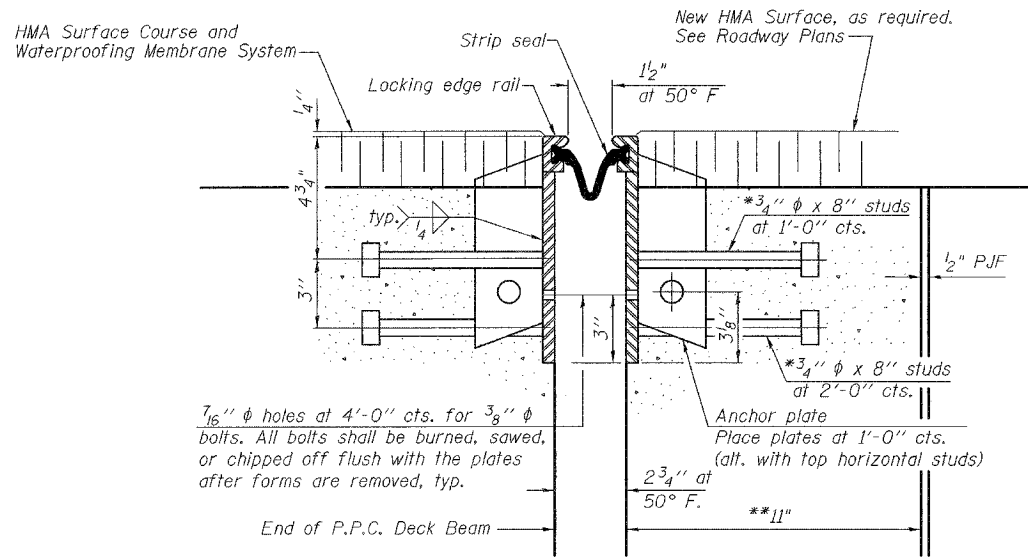


STATE OF ILLINOIS
DEPARTMENT OF TRANSPORTATION

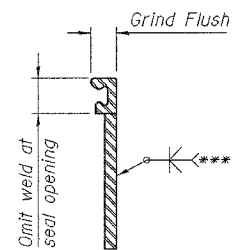
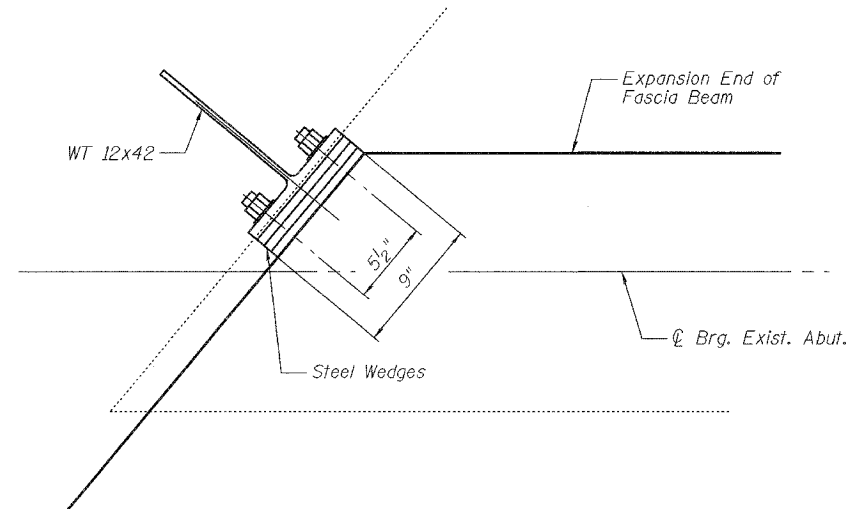
ROUTE NO.	SECTION	COUNTY	TOTAL SHEETS	SHEET NO.	SHEET NO. 11
F.A.P. 132	102BR-1	MASSAC	82	64	16 SHEETS
FED. ROAD DIST. NO. 7	ILLINOIS	FED. AID PROJECT-			

Contract #78032

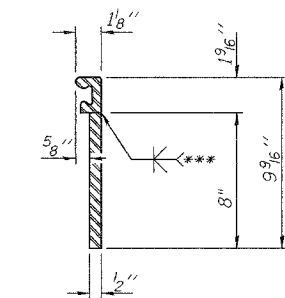


SECTION THRU STRIP SEAL JOINT

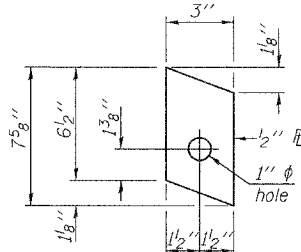
*Granular or solid flux filled headed studs conforming to Article 1006.32 of the Std. Specs., automatically end welded.
**See Sheet 9 of 16 For Concrete Structure Removal and Replacement Details.



LOCKING EDGE RAIL SPLICE DETAIL



LOCKING EDGE RAIL



ANCHOR PL

*** Back gouge not required if complete joint penetration is verified by mock-up.

Notes:

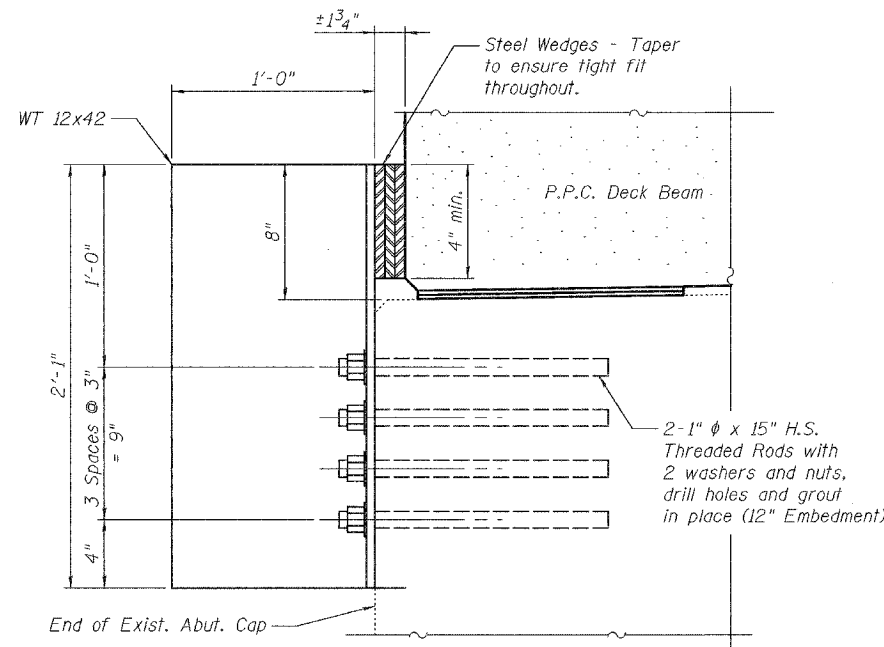
The strip seal shall be made continuous and shall have a minimum thickness of 1/4". The configuration of the strip seal shall match the configuration of the Locking Edge Rails. Open or "Webbed" strip seal gland configurations are not permitted. The gland shall be sized for a maximum rated movement of 4 inches.

All steel components shall be galvanized after fabrication according to Article 520.03 of the Standard Specifications.

The height and thickness of the Locking Edge Rails shown are minimum dimensions. The actual configuration of the Locking Edge Rails and matching strip seal may vary from manufacturer to manufacturer. Flanged edge rails will not be allowed.

The inside of the Locking Edge Rail groove shall be free of weld residue. Locking Edge Rails may be spliced at slope discontinuities and stage construction joints.

The manufacturer's recommended installation methods shall be followed.



SIDE RETAINER

(4 Required)

Notes:

Fill gap with steel wedges to provide temporary lateral support until shear keys have been grouted and block-out has been poured and cured.

Side retainers, threaded rods, nuts and washers shall be galvanized according to AASHTO M 111 or M 232 (as applicable).

See Section 584 of the Standard Specifications for epoxy grouting of threaded rods. Cost of side retainers and accessories are included with Precast Prestressed Concrete Deck Beams (21" Depth).



BILL OF MATERIAL

Item	Unit	Quantity
Preformed Joint	Foot	84
Strip Seal		

DESIGNED	RLM
CHECKED	YSS
DRAWN	PRC
CHECKED	RLM

02/04/08

**EXPANSION JOINT AND
SIDE RETAINER DETAILS**
ILL. ROUTE 145 OVER MASSAC CREEK
F.A.P. ROUTE 132 - SECTION 102BR-1
MASSAC COUNTY
STATION 533+27.15
STRUCTURE NO. 064-0008