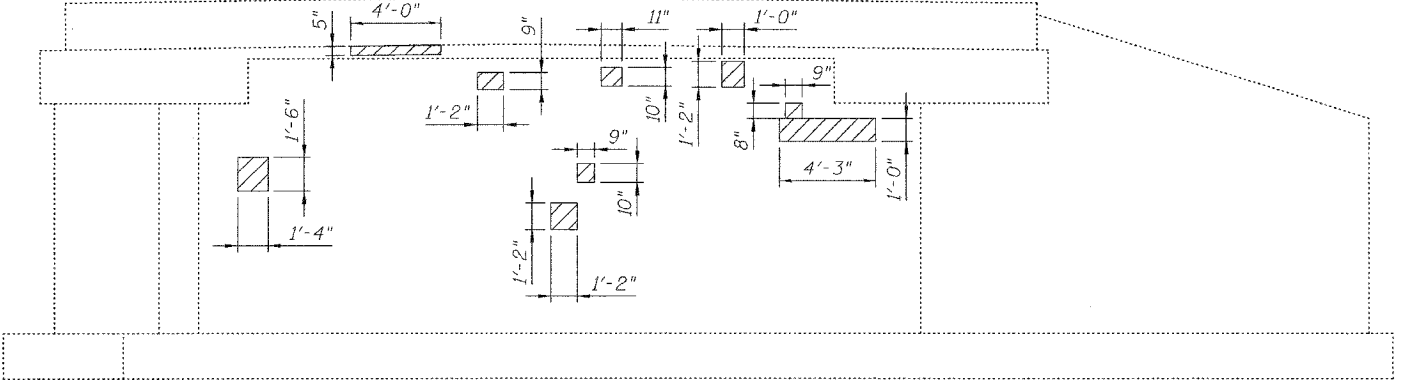


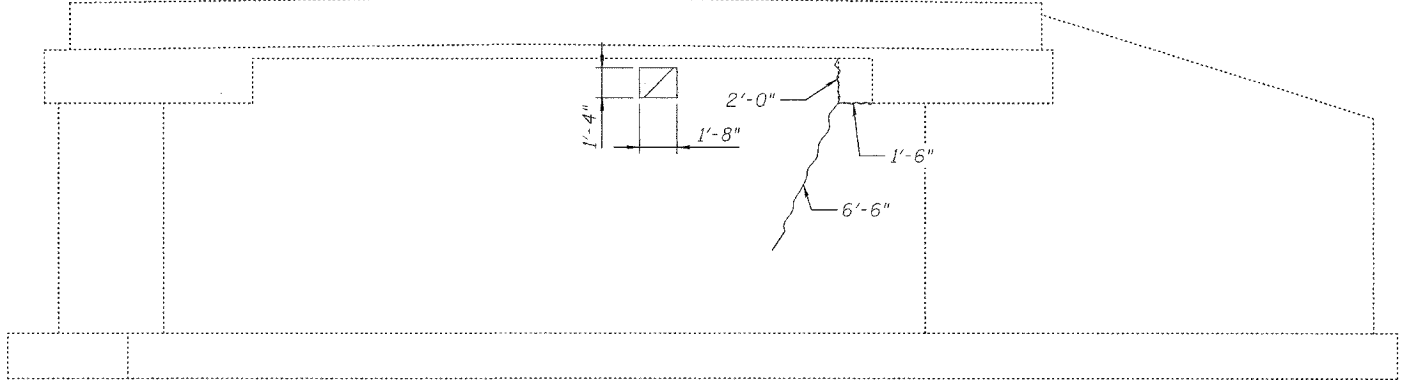
STATE OF ILLINOIS
DEPARTMENT OF TRANSPORTATION

ROUTE NO.	SECTION	COUNTY	TOTAL SHEETS	SHEET NO.	SHEET NO. 14 16 SHEETS
F.A.P. 132	102BR-1	MASSAC	82	67	
FED. ROAD DIST. NO. 7	ILLINOIS	FED. AID PROJECT			

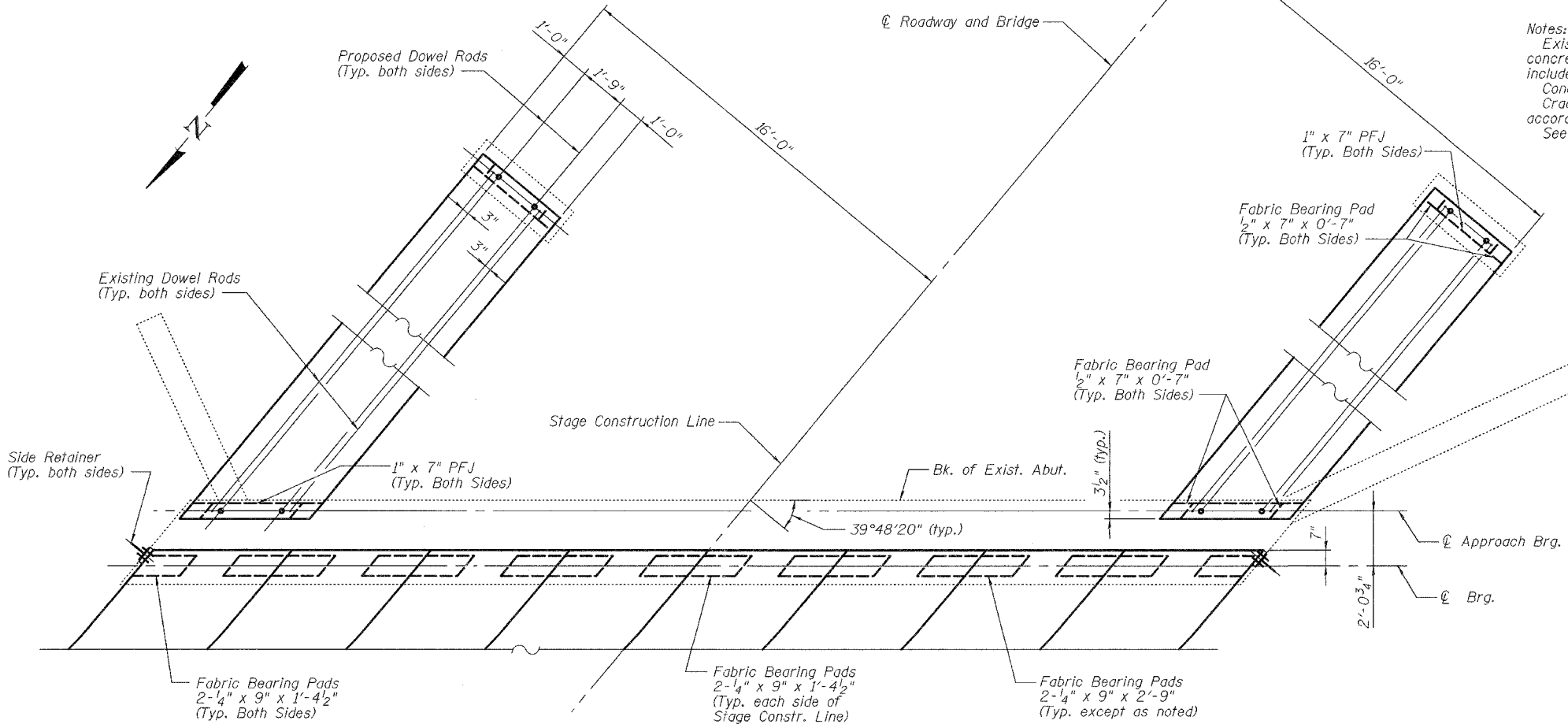
Contract #78032



ELEVATION - SOUTH ABUTMENT
(Looking South)



ELEVATION - NORTH ABUTMENT
(Looking North)



PLAN - SOUTH ABUTMENT BEARING SEAT
(South Abutment shown, North Abutment similar)

Concrete structure, bituminous wearing surface, and existing approach pavement not shown for clarity.

Notes:
Existing dowel rods shall be burned off flush with the existing concrete face, ground smooth, and sealed with epoxy. Cost is included with Removal of Existing Precast Concrete Units.
Concrete sealer shall be applied to concrete repair areas.
Crack $\geq \frac{1}{16}$ " shall be repaired by epoxy crack injection according to Section 590 of the Standard Specifications.
See Sheet 15 of 16 for Substructure Repair Bill of Material.

LEGEND

- Structural Repair of Concrete (Depth equal to or less than 5")
- Epoxy Crack Injection
- Existing Dowel Rod
- Proposed Dowel Rod

ABUTMENT REPAIRS
ILL. ROUTE 145 OVER MASSAC CREEK
F.A.P. ROUTE 132 - SECTION 102BR-1
MASSAC COUNTY
STATION 533+27.15
STRUCTURE NO. 064-0008



DESIGNED	RLM
CHECKED	YSS
DRAWN	PRC
CHECKED	RLM

03/04/08