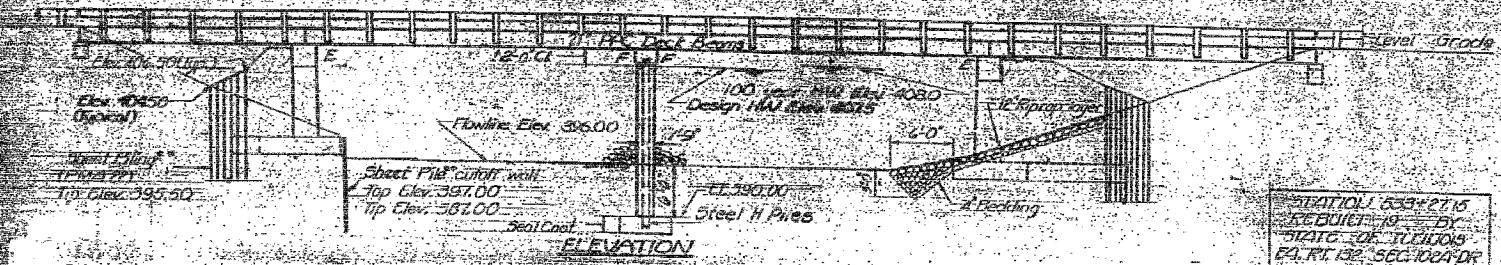


EXISTING STRUCTURE: Built in 1933 on S&N 145, Sec 102A of Sta. 533+30.00. Contractor shall remove existing superstructure and modify substructure. Existing Pony Truss 85'-11" Bt. to Bt. of Abuts 24'-0" Truss. No widening. Traffic shall be maintained at all times utilizing stage construction.

STATE OF ILLINOIS
DEPARTMENT OF TRANSPORTATION

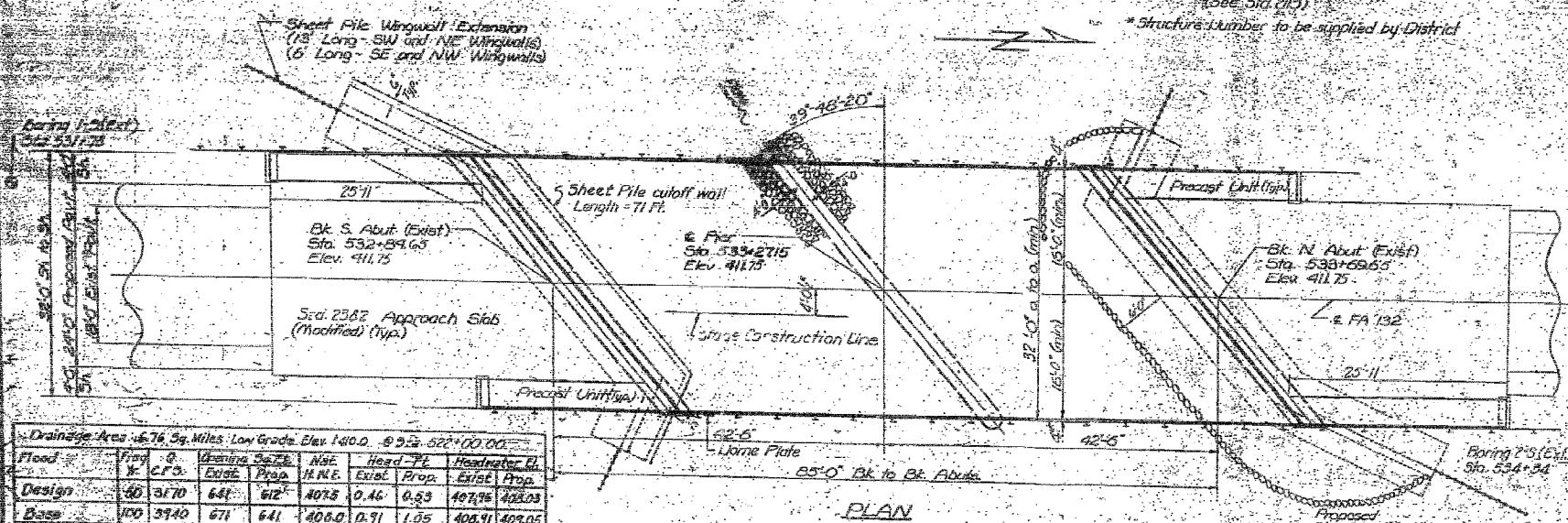
DATE	BY	REVISION



STATION 533+27.15
REBUILT BY
STATE OF ILLINOIS
FA RTE 132, SEC 102A DR
ELEVATION 411.75
LOADING HS 20
STR. 100

CLAMP PLATE
(See Sta. 213)

*Structure Lumber to be supplied by District



Drainage Area	6.76 Sq. Miles	Low Grade Elev.	140.0 - 92.5 - 522+00.00
Flood	8	Design Stage	641'
Design	100	641'	641'
Base	100	3940	671'
Overturning	600	5172'	705'
Max. Calc.	520	5172'	705'

DESIGNED BY: J.M.H.
CHECKED BY: E.A.S.
DATE: 02/04/08

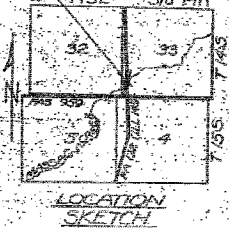


FIELD UNITS
F_c = 3500 psi
F_y = 60,000 psi

DESIGN STRESSES
PRECAST PRESTRESSED UNITS
F_c = 5000 psi
F_c = 4000 psi
F_s = 270,000 psi (6# strands)
F_s = 169,000 psi (6# strands)

PRECAST UNITS
F_c = 4500 psi
F_c = 1800 psi
F_s = 200,000 psi
n = 8

DESIGN SPECIFICATIONS: 1977 AASHTO and Interims
Allow 25 PSF for future wearing surface
DESIGN LOADING: HS 20-44 (new construction)



See Proposal for Pricing Data
Plan dimensions and details relative to existing structure have been taken from existing plans and are subject to normal construction variations. It shall be the contractor's responsibility to verify such dimensions and details in the field and make necessary approved adjustments prior to construction or ordering of materials. Such variations shall not be cause for dimensional compensation nor a change in the scope of the work. However, the Contractor will be paid for the quantity actually furnished at the unit price bid for the work.
The top surface of the beams shall be finished in accordance with Article 905.06 of the Specifications, except that the surface shall not be roughened by brooming; the finished surface shall be free of depressions or high spots with sharp corners and the top edge of beams shall be rounded or chamfered to a minimum of 1/4".
Protective Coat shall not be applied to surfaces to which Water Retarding Membrane System is applied.
Expansion joints shall consist of approved expansion anchors in which concrete has a proof load of 3000 lbs. and 3/4" x 3/4" x 1/2" stainless steel bars shall conform to the requirements of AASHTO M 31 and M 35 Grade 60.
Shoulder transition to wingwall shall be shaped with broken cut grade - spot incidental.
The contractor shall drive one steel HPIU-36 test pile in the permanent location of the pier as directed by the Engineer before commencing the remainder of piles.

TOTAL BILL OF MATERIAL

Item	Unit	Super	Sub	Total
Continuous Concrete Surface Course Class I	Tons	22		22
Removal of Existing Superstructure	Cu Yds	1		1
Concrete Removal	Cu Yds		4.4	4.4
Capstone Cells 3/8"	Each		26	26
Class II Concrete	Cu Yds	7.4	75.2	82.6
Precast Concrete Bridge Slab	Sq Ft	345		345
Steel Reinforcing Type 57	Lbs	264		264
Reinforcing Bars	Lbs	290	7950	7950
Form Plates	Each	1		1
Temporary Bridge Rail	Lbs	99		99
Waterproofing Membrane System	Sq Yds	285		285
Leakage Expansion Joint	Lbs	84		84
P.C. Reinforcing Course	Sq Ft	545		545
Temporary Support System	Each	1		1
Steel Sheet Piling	Sq Yds		1090	1090
Steel Piles	Sq Yds		104	104
Test Piles (Steel HPIU-36)	Each		1	1
Cofferdam	Each		1	1
Cofferdam Excavation	Cu Yds		101	101
Seal Coat Concrete	Cu Yds		373	373

GENERAL PLAN AND ELEVATION
ILL. RTE 145 OVER MASSAC CREEK
FA RTE 132, SEC 102A-DR
MASSAC COUNTY
STATION 533+27.15



FOR INFORMATION ONLY

FILE NAME =	USER NAME = #USER#	DESIGNED - JMH	REVISED -	STATE OF ILLINOIS DEPARTMENT OF TRANSPORTATION	EXISTING STRUCTURE PLANS	F.A.P. RTE.	SECTION	COUNTY	TOTAL SHEETS	SHEET NO.
#FILEL#		DRAWN - AEC	REVISED -			132	102BR-1	MASSAC	82	70
PLOT SCALE = #SCALE#		CHECKED - JMH	REVISED -	SCALE: NONE	SHEET NO. OF SHEETS STA.	FED. ROAD DIST. NO. 7 ILLINOIS FED. AID PROJECT				
PLOT DATE = #DATE#		DATE - 02/04/08	REVISED -	TO STA.		CONTRACT NO. 78032				