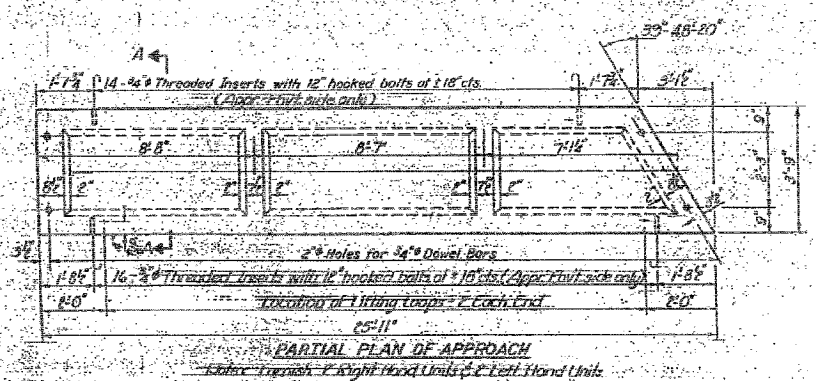
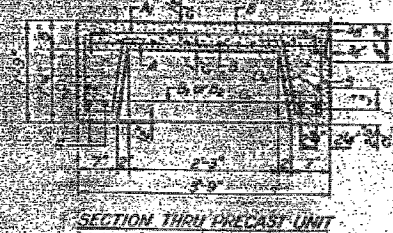
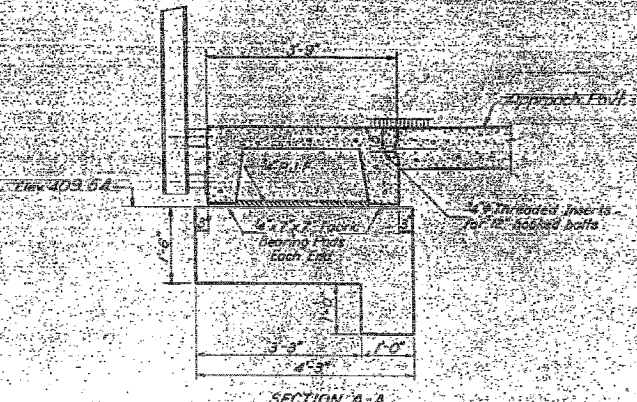
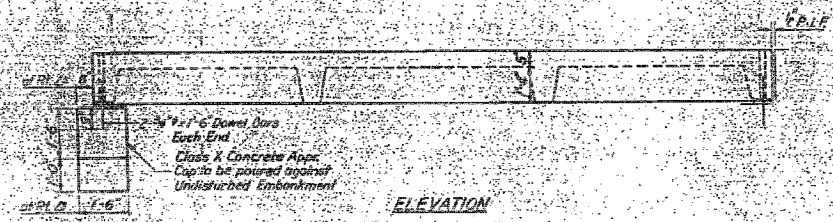


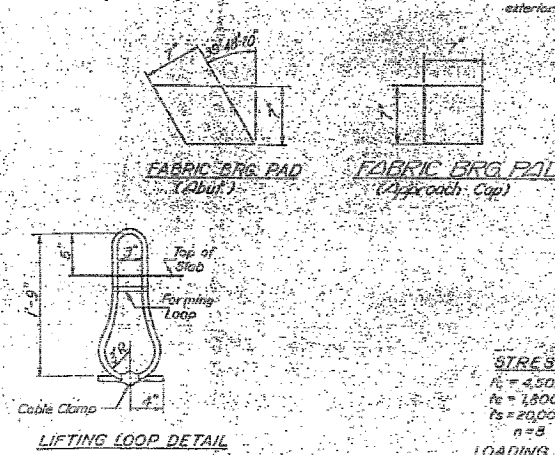
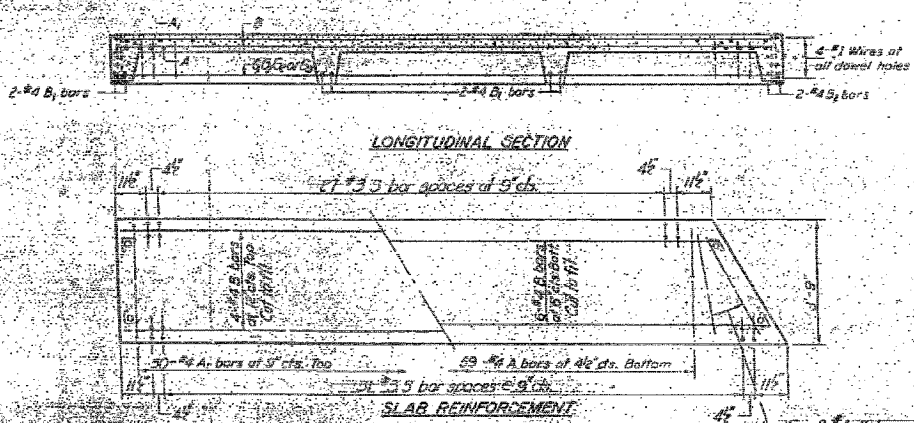
STATE OF ILLINOIS
DEPARTMENT OF TRANSPORTATION

Project No.	132	Section	102BR-1	Sheet No.	82
Contract No.	78032	County	MASSAC	Station	574+53.15



BAR LIST - ONE UNIT
Reinforcement to be cast into slab

Bar	No.	Size	Length (Shore)
A	27	#4	3'-3"
A'	34	#4	4'-0"
B	10	#4	7'-6"
B'	16	#4	5'-6"
B''	2	#4	4'-7"
C	7	#1	25'-0"
G	7	#1	25'-0"
D	14	#4	22'-0"
D'	1	#4	22'-0"
S	64	#3	3'-10"



NOTES
Unless otherwise approved by the Engineer, lifting loops shall be 6" x 12" class wire rope with three legs and shall have a minimum ultimate strength of 10,000 lbs. Loops shall be burned off after slab has been erected. Holes shall be drilled and anchor dowels grouted in place. Cost of reinforcement and accessories cast into the slab, including bearing pads, formwork, drilling for, placing and grouting anchor bolts and 2# 1/2" hooked bolts is included in Unit bid price for Precast Concrete Bridge Slab. The Precast Concrete Bridge Slab shall be erected and aligned with the exterior face of the exterior Deck Beam after Deck Beams are in final position.

FOUR UNITS
BILL OF MATERIAL

Item	Unit	Quantity
Precast Concrete Bridge Slab	Sq. Ft.	365
Class K Concrete	CY	16

STRESSES
f_c = 4,500 psi
f_s = 18,000 psi
f_s = 20,000 psi
n = 8
LOADING HS-20

APPROACH DETAILS
E.A. RT. 132 SEC 102A-DR
MASSAC COUNTY
STA. 533+87.15

DESIGNED: [Signature]
CHECKED: [Signature]
DRAWN: J.D.
CHECKED: BLS 6AS

EXAMINED: [Signature]
APPROVED: [Signature]

2.5-2 PS Precast Road Unit (Steward R.E.) 3-15-71



FOR INFORMATION ONLY

FILE NAME =	USER NAME = \$USER\$	DESIGNED - JMH	REVISED -	STATE OF ILLINOIS DEPARTMENT OF TRANSPORTATION	EXISTING STRUCTURE PLANS	F.A.P. RTE. 132	SECTION 102BR-1	COUNTY MASSAC	TOTAL SHEETS 82	SHEET NO. 72		
#FILEL#	PLOT SCALE = \$SCALE\$	CHECKED - JMH	REVISED -			SCALE: NONE	SHEET NO. OF SHEETS STA. TO STA.	FED. ROAD DIST. NO. 7 ILLINOIS FED. AID PROJECT				
	PLOT DATE = \$DATE\$	DATE - 02/04/08	REVISED -									
CONTRACT NO. 78032												