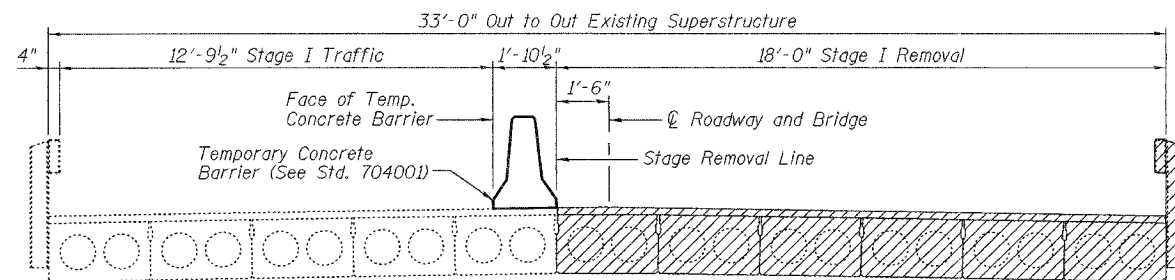


STATE OF ILLINOIS
DEPARTMENT OF TRANSPORTATION

ROUTE NO.	SECTION	COUNTY	TOTAL SHEETS	SHEET NO.
F.A.P. 885	111BR-1	POPE	69	14
FED. ROAD DIST. NO. 7	ILLINOIS	FED. AID PROJECT-		

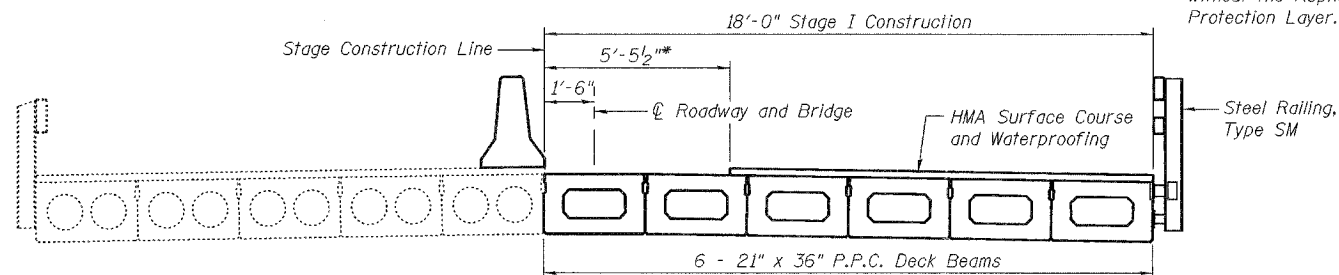
SHEET NO. 3
15 SHEETS

Contract #78033

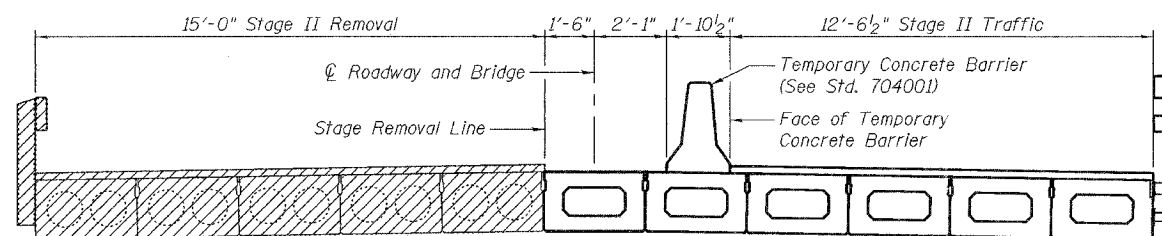


STAGE I REMOVAL
(Looking Upstation)

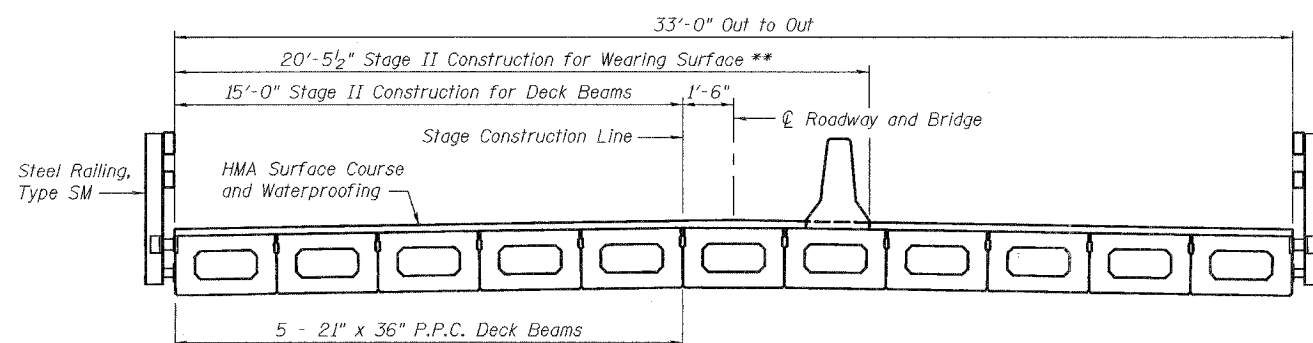
* Waterproofing Membrane System without the Asphalt Sand Seal Protection Layer.



STAGE I CONSTRUCTION
(Looking Upstation)



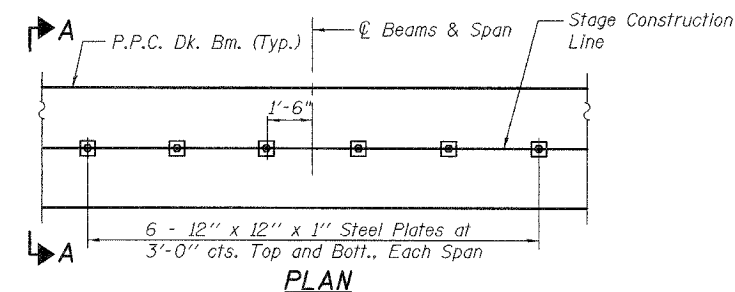
STAGE II REMOVAL
(Looking Upstation)



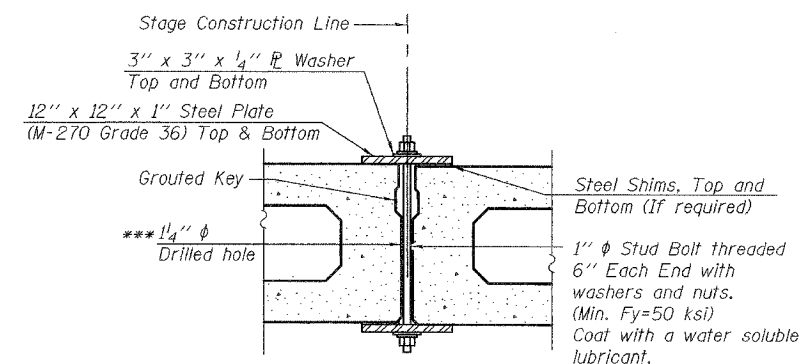
STAGE II CONSTRUCTION
(Looking Upstation)

See Roadway Plans for quantity of Temporary Concrete Barrier.

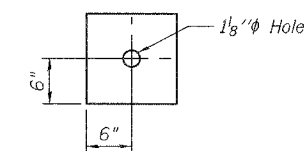
** The Temporary Concrete Barrier for Stage II Traffic shall be removed after the Stage II Construction shear keys are grouted and cured and immediately prior to placement of the HMA wearing surface. Once the Temporary Concrete Barrier has been removed, the penetrating primer, coal tar emulsion membrane, fiber-glass fabric and coal tar emulsion slurry layers of the Waterproofing Membrane shall be lapped 6". The asphalt sand seal protection layer shall then be applied according to Section 581 of the Standard Specifications.



PLAN



SECTION A-A



CLAMPING PLATE

SHEAR KEY CLAMPING DETAILS

See Article 504.06 of the Standard Specifications for Stage Construction of Precast Prestressed Concrete Deck Beams.
Cost included with Precast Prestressed Concrete Deck Beams (21" Depth).

*** As an alternate to the drilled holes, the Contractor may request the Fabricator to cast 2" diameter semi-circular recesses in the sides of each beam adjacent to the stage construction line. These recesses should align to form a hole at the appropriate locations for the clamping device bolts. If the Contractor elects to use this alternate, the details shall be identified on the shop drawings.

STAGE CONSTRUCTION DETAILS
ILL. ROUTE 146 OVER SUGAR CREEK
F.A.P. ROUTE 885 - SECTION 111BR-1
POPE COUNTY
STATION 671+76.00
STRUCTURE NO. 076-0006



DESIGNED	YSS
CHECKED	RLM
DRAWN	PRC
CHECKED	YSS

04/22/08