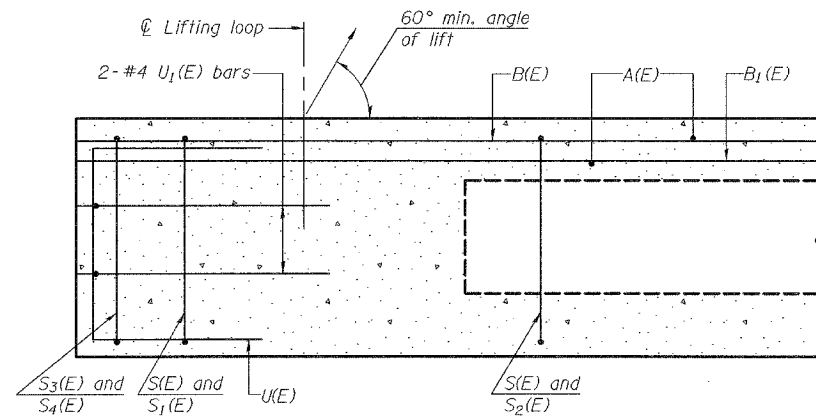


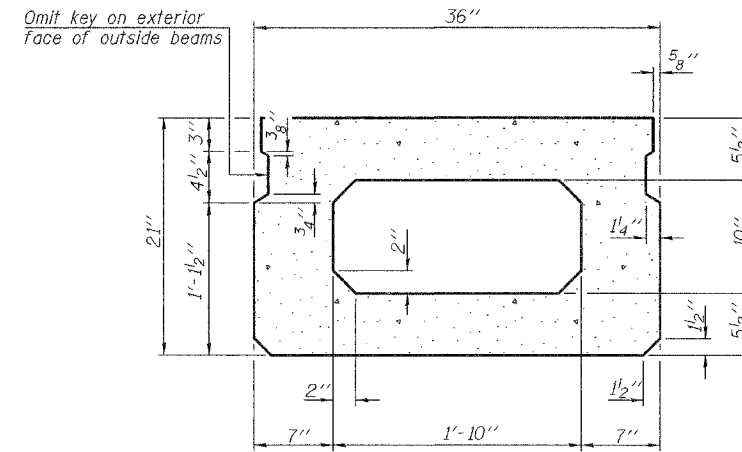
STATE OF ILLINOIS
DEPARTMENT OF TRANSPORTATION

ROUTE NO. F.A.P. 885	SECTION 111BR-1	COUNTY POPE	TOTAL SHEETS 69	SHEET NO. 15	SHEET NO. 5 15 SHEETS
FED. ROAD DIST. NO. 7		ILLINOIS		FED. AID PROJECT-	

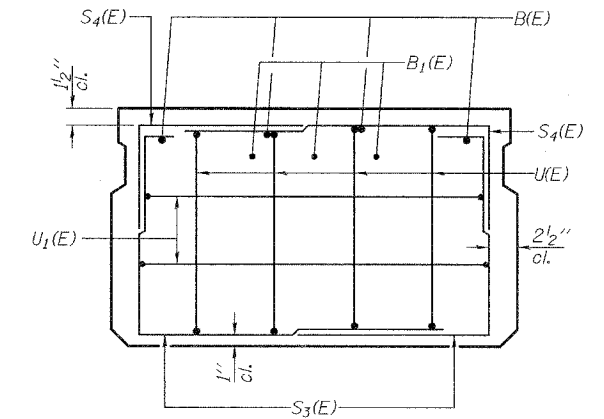
Contract #78033



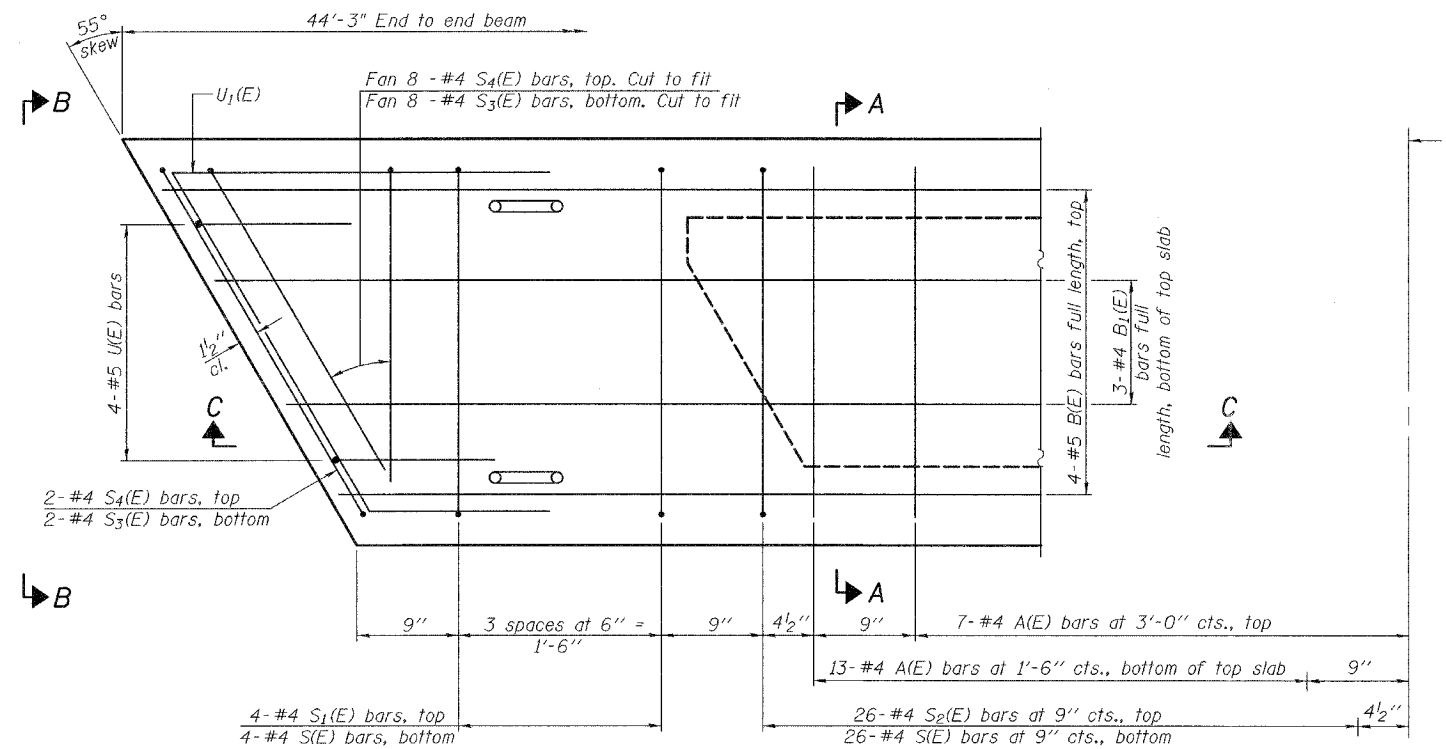
SECTION C-C



SECTION A-A
(Showing dimensions)

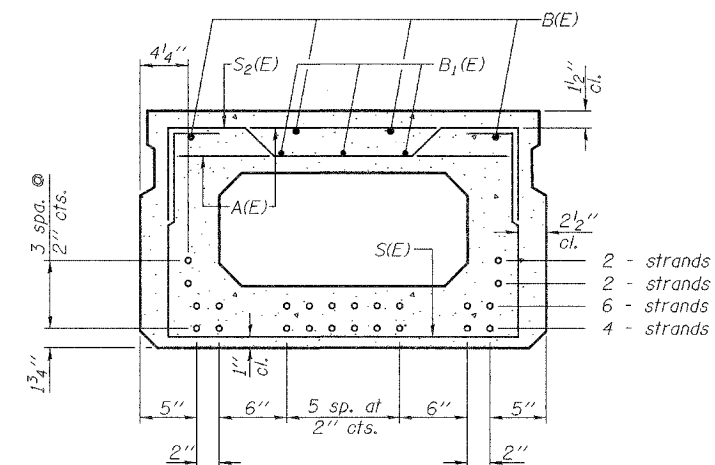


VIEW B-B



PLAN VIEW AT FIXED END

See sheet 6 of 15 for Expansion End Detail.



SECTION A-A

(Showing reinforcement and permissible strand locations)

Note: Place the number of strands specified in each row symmetrically about the centerline of beam in the permissible strand locations shown.

BAR LIST
ONE BEAM ONLY
(For information only)

Bar	No.	Size	Length	Shape
A(E)	39	#4	2'-7"	—
B(E)	4	#5	43'-1"	—
B1(E)	3	#4	43'-1"	—
C(E)	5	#5	2'-8"	⌋
E(E)	3	#5	2'-0"	⌋
S(E)	57	#4	6'-5"	⌋
S1(E)	5	#4	5'-7"	⌋
S2(E)	52	#4	5'-10"	⌋
S3(E)	20	#4	6'-5"	⌋
S4(E)	20	#4	6'-0"	⌋
S5(E)	4	#4	5'-8"	⌋
S6(E)	4	#4	5'-3"	⌋
U(E)	4	#5	4'-0"	⌋
U1(E)	4	#4	10'-5"	⌋
U2(E)	4	#5	3'-3"	⌋

Notes: See sheet 6 and 7 of 15 for additional details.

See sheet 7 of 15 for Bill of Material.



DESIGNED	YSS
CHECKED	RLM
DRAWN	PRC
CHECKED	YSS

03/18/08

Note: Spacing of S(E) and S2(E) bars may be adjusted up to 4" in the immediate area of the transverse tie diaphragms to miss the block outs for the transverse ties.

21" X 36" DECK BEAM
ILL. ROUTE 146 OVER SUGAR CREEK
F.A.P. ROUTE 885 - SECTION 111BR-1
POPE COUNTY
STATION 671+76.00
STRUCTURE NO. 076-0006