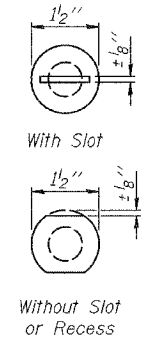
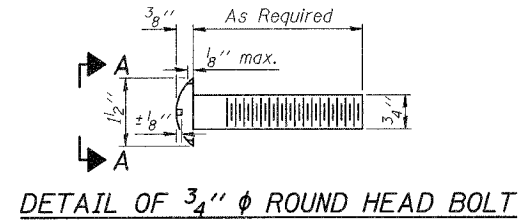


STATE OF ILLINOIS
DEPARTMENT OF TRANSPORTATION

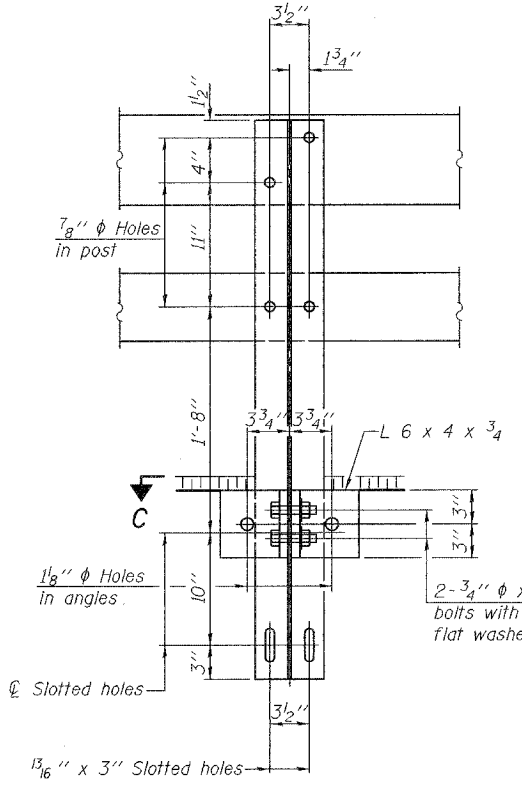
ROUTE NO.	SECTION	COUNTY	TOTAL SHEETS	SHEET	SHEET NO. 11 15 SHEETS
F.A.P. 885	111BR-1	POPE	69	22	
FED. ROAD DIST. NO. 7		ILLINOIS	FED. AID PROJECT		

Contract #78033

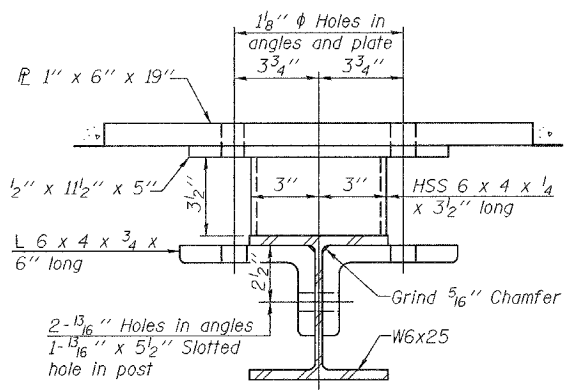


VIEW A-A

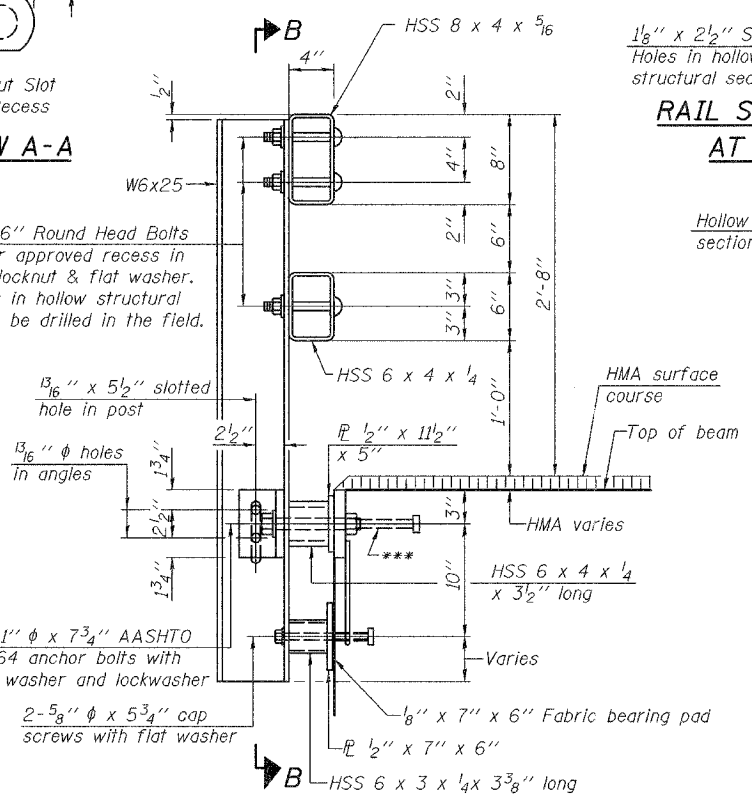
4-3/4" ϕ x 6" Round Head Bolts (With slot or approved recess in head) with locknut & flat washer. 7/8" ϕ holes in hollow structural section may be drilled in the field.



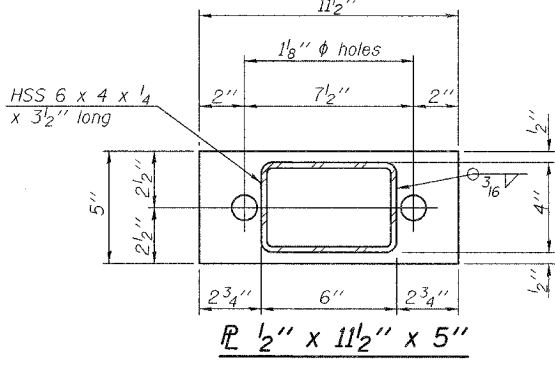
SECTION B-B



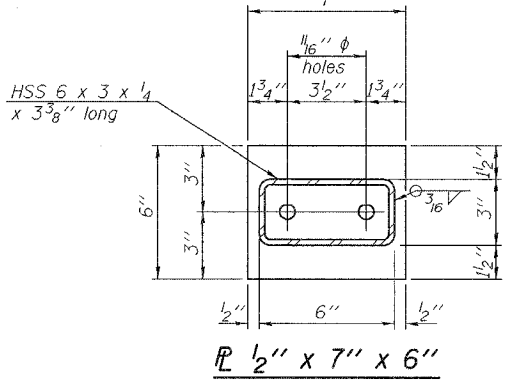
SECTION C-C



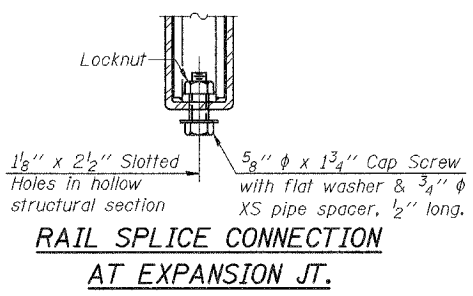
SECTION AT RAIL POST



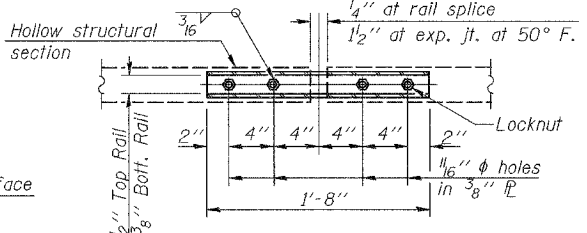
ϕ 1/2" x 11 1/2" x 5"



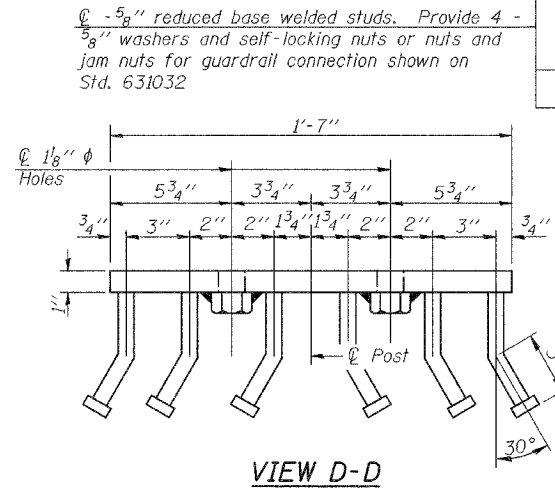
ϕ 1/2" x 7" x 6"



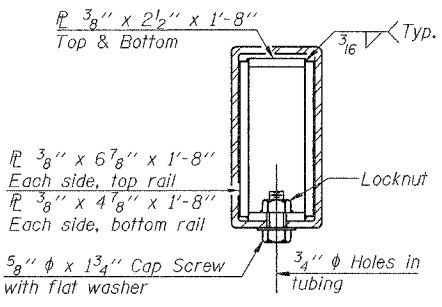
RAIL SPLICE CONNECTION AT EXPANSION JT.



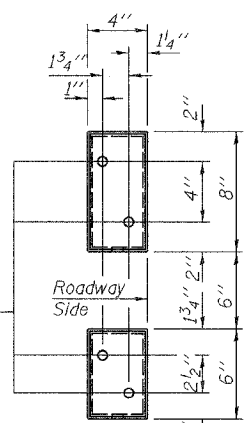
PLAN-BOTT. SPLICE TYPICAL



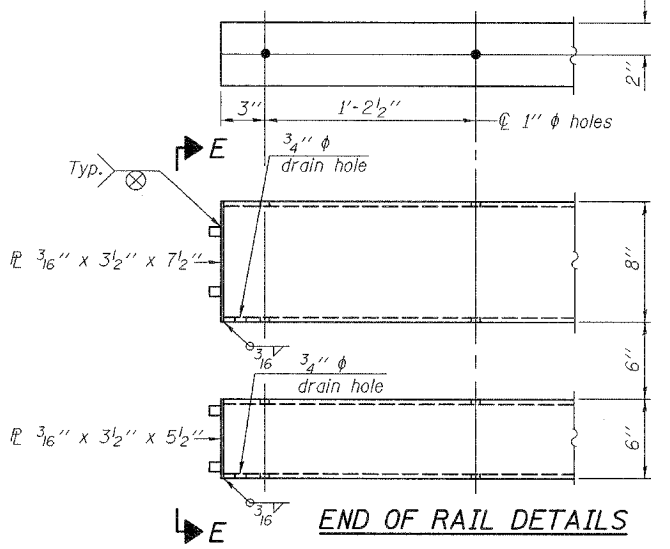
VIEW D-D



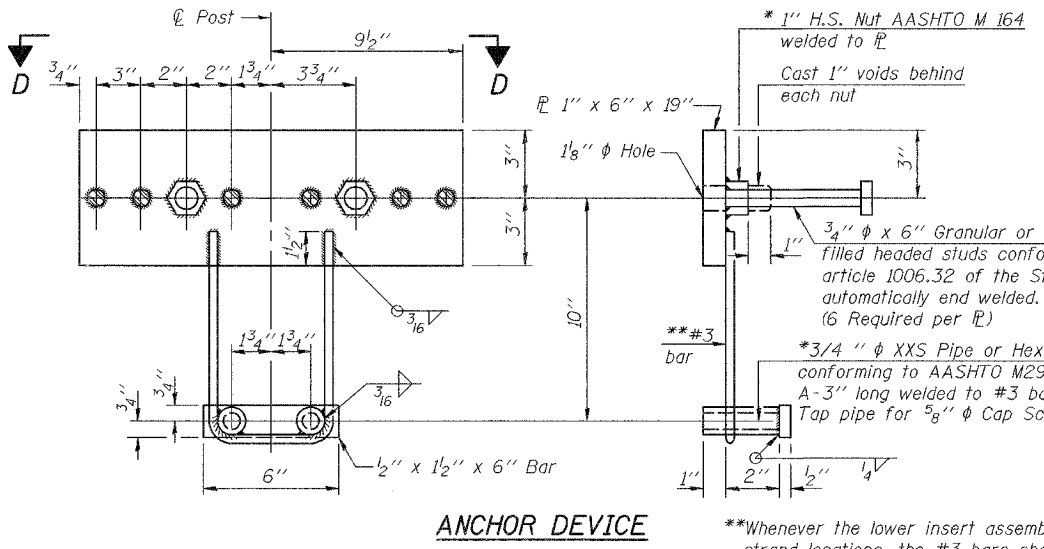
SECTION AT RAIL SPLICE



VIEW E-E



END OF RAIL DETAILS



ANCHOR DEVICE

*Threaded areas shall be plugged or blocked off during casting of beam. Galvanized after fabrication.

Notes:
All field drilled holes shall be coated with an approved zinc rich paint before erection.
For multi-span bridges, sufficient 1/4" x 6" x 1'-2" galvanized steel shims shall be provided to align rail between adjacent spans. Cost included with Steel Railing, Type SM.
All steel rail members shall be galvanized according to Article 509.05 of the Standard Specifications.
***The studs of the anchor devices shall be placed below the top reinforcement bars and the outermost longitudinal reinforcement bar shall be placed directly above the studs of the rail post anchor device.
See Sheet 12 of 15 for rail post locations.

BILL OF MATERIAL

Item	Unit	Quantity
Steel Railing, Type SM	Foot	258

STEEL RAILING, TYPE SM
ILL. ROUTE 146 OVER SUGAR CREEK
F.A.P. ROUTE 885 - SECTION 111BR-1
POPE COUNTY
STATION 671+76.00
STRUCTURE NO. 076-0006



DESIGNED	YSS
CHECKED	RLM
DRAWN	PRC
CHECKED	YSS

R-34HMAWS

9-3-07

(6'-3" Maximum Post Spacing) (1/4" minimum to 3/8" maximum HMA thickness)