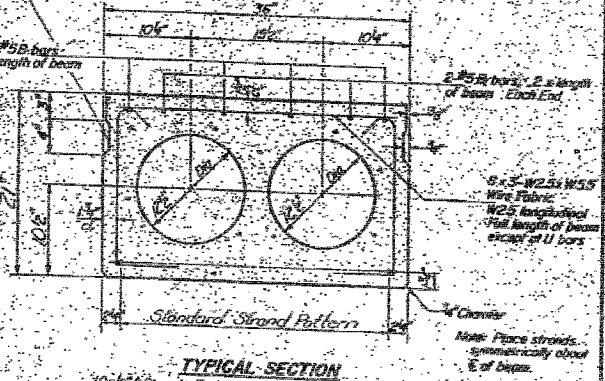
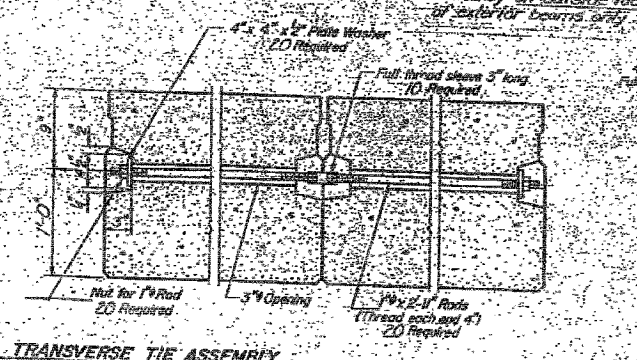
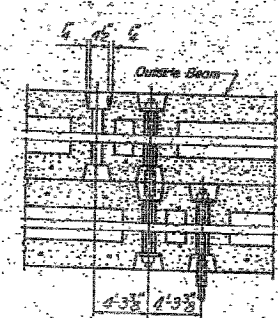
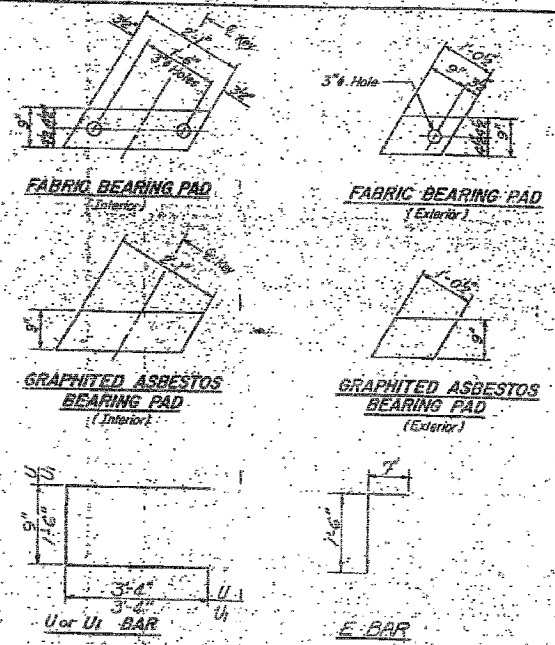


STATE OF ILLINOIS
DEPARTMENT OF TRANSPORTATION

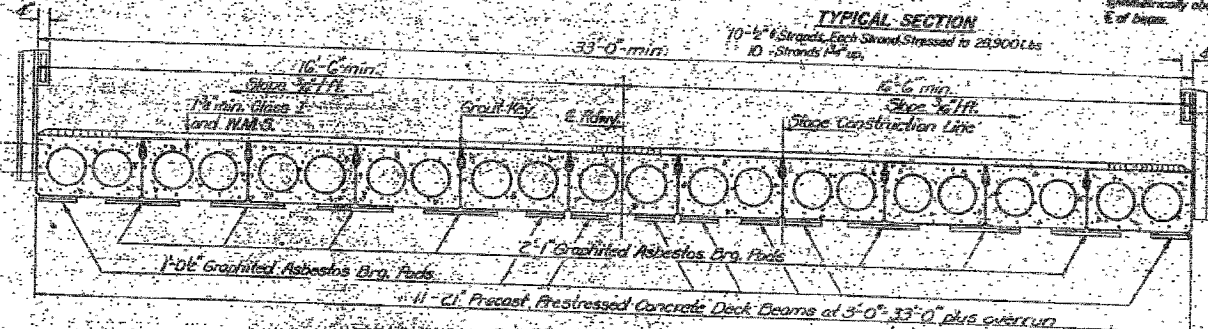
Project No.	885	Section	111BR-1	Sheet No.	69	Total Sheets	30
Contract No.	78033						



TYPICAL TRANSVERSE TIE ASSEMBLY

TYPICAL SECTION

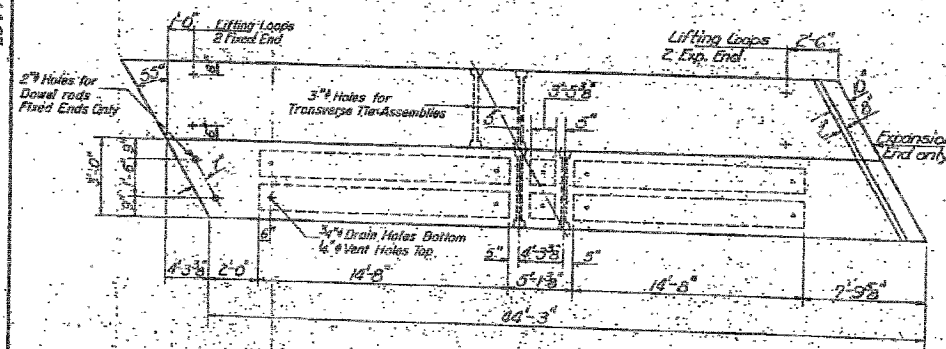
For Nail Post Insert Details See Sht. #7



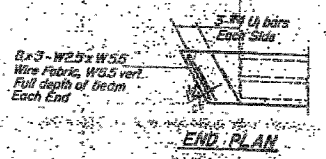
CROSS SECTION
Showing expansion bearings



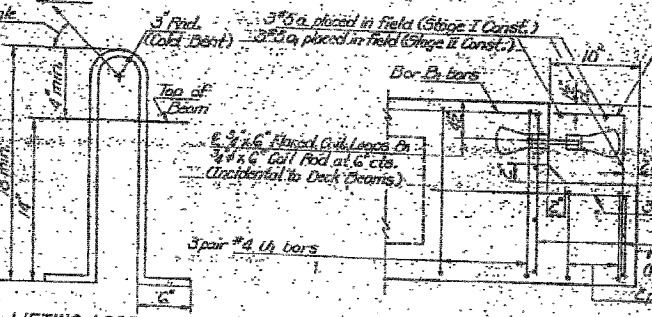
CROSS SECTION
Showing fixed bearings



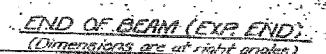
PLAN



END PLAN



LIFTING LOOP DETAIL



END OF BEAM (EXP. END)
(Dimensions are at right angles)

NOTES

1. Prestressing steel shall be non-powdered high strength, stress-relieved 7-wire strand Grade 270. The lowest diameter shall be 3/16" and the nominal cross-sectional area shall be 0.153 sq. in. Lifting loops shall be 3/4" diameter 6x25 class wire rope with fiber core and shall have a minimum ultimate tensile strength of 25,000 lbs. or 2-1/2" x 270 strand as shown. The 2-1/2" rods in the transverse tie assembly shall be tightened to a snug fit and the threads in pockets that receive transverse tie bars or nuts shall be filled with grout after transverse tie assembly is in place.

2. Reinforcement bars shall conform to AASHTO M-31 or M-53, Grade 60. The bearing and surfaces shall be finished by shimming to assure firm and even bearing and to make adjusting joints of the dimension of the Exterior Bearing Pad. Sealant shall be provided for each bearing.

3. Key way surfaces shall be blocked to remove form oil or other bond breaking materials prior to shipment of the beams. Cleaning shall be done by scrubbing the keyway areas between top of the beam and the bottom edge of the key.

BILL OF MATERIAL

Bar	No.	Size	Length	Shape
a	6	#5	22'-0"	
g	6	#5	36'-3"	
Precast Prestressed Concrete Deck Beams (27' length)	8	27'-0"	2920	
Reinforcement Bars	390			
Class X Concrete	101.61		2.6	

SUPERSTRUCTURE
PART 885 SEC. 111B-D-1
POPE COUNTY
STATION 671+20.00



FOR INFORMATION ONLY

FILE NAME =	USER NAME = #USER#	DESIGNED - JHM	REVISED -	F.A.P. RTE. 885	SECTION 111BR-1	COUNTY POPE	TOTAL SHEETS 69	SHEET NO. 30
#FILE#		DRAWN - AEC	REVISED -	EXISTING STRUCTURE PLANS				
		CHECKED - JMH	REVISED -	SCALE:	SHEET NO. OF SHEETS	STA. TO STA.	CONTRACT NO. 78033	
		DATE - 03/18/08	REVISED -	FED. ROAD DIST. NO. 7 ILLINOIS FED. AID PROJECT				

STATE OF ILLINOIS
DEPARTMENT OF TRANSPORTATION